

COLLECTION MUSICALE EN FORMAT NUMÉRIQUE
MUSIQUE INSTRUMENTALE DE STYLE CONCERTANT

Agostino Guerrieri (c. 1630 - c. 1684)

La Benedetta

Sonata a 2 Violini

Qual si può anco sonare senza Organo però con Teorba & Basso di Viola



Figured bass notation for the first system (measures 1-8):

♭ # ♭ 6 6 6 # 7 6 # #

Figured bass notation for the second system (measures 9-12):

♭ 6 # 6 9 8 6 5 4 #

Source : Sonate di violino a 1, 2, 3, 4 per chiesa, & anco aggiunta per camera... opera prima. -
 Venezia, Francesco Magni detto Gardano, 1673 - RISM : G 4878

Allegro

16 *Allegro*

6 \flat \sharp 76 \sharp \sharp 43

20

3

6

9

12

15

18

21

24

27

30

33

36

39

42

45

48

51

54

57

60

63

66

69

72

75

78

81

84

87

90

93

96

99

102

105

108

111

114

117

120

123

126

129

132

135

138

141

144

147

150

153

156

159

162

165

168

171

174

177

180

183

186

189

192

195

198

201

204

207

210

213

216

219

222

225

228

231

234

237

240

243

246

249

252

255

258

261

264

267

270

273

276

279

282

285

288

291

294

297

300

303

306

309

312

315

318

321

324

327

330

333

336

339

342

345

348

351

354

357

360

363

366

369

372

375

378

381

384

387

390

393

396

399

402

405

408

411

414

417

420

423

426

429

432

435

438

441

444

447

450

453

456

459

462

465

468

471

474

477

480

483

486

489

492

495

498

501

504

507

510

513

516

519

522

525

528

531

534

537

540

543

546

549

552

555

558

561

564

567

570

573

576

579

582

585

588

591

594

597

600

603

606

609

612

615

618

621

624

627

630

633

636

639

642

645

648

651

654

657

660

663

666

669

672

675

678

681

684

687

690

693

696

699

702

705

708

711

714

717

720

723

726

729

732

735

738

741

744

747

750

753

756

759

762

765

768

771

774

777

780

783

786

789

792

795

798

801

804

807

810

813

816

819

822

825

828

831

834

837

840

843

846

849

852

855

858

861

864

867

870

873

876

879

882

885

888

891

894

897

900

903

906

909

912

915

918

921

924

927

930

933

936

939

942

945

948

951

954

957

960

963

966

969

972

975

978

981

984

987

990

993

996

999

1002

1005

1008

1011

1014

1017

1020

1023

1026

1029

1032

1035

1038

1041

1044

1047

1050

1053

1056

1059

1062

1065

1068

1071

1074

1077

1080

1083

1086

1089

1092

1095

1098

1101

1104

1107

1110

1113

1116

1119

1122

1125

1128

1131

1134

1137

1140

1143

1146

1149

1152

1155

1158

1161

1164

1167

1170

1173

1176

1179

1182

1185

1188

1191

1194

1197

1200

1203

1206

1209

1212

1215

1218

1221

1224

1227

1230

1233

1236

1239

1242

1245

1248

1251

1254

1257

1260

1263

1266

1269

1272

1275

1278

1281

1284

1287

1290

1293

1296

1299

1302

1305

1308

1311

1314

1317

1320

1323

1326

1329

1332

1

23

piano

piano

43 6

Detailed description: This system contains measures 23 through 26. It features three staves: a top treble staff, a middle treble staff, and a bottom bass staff. Measures 23 and 24 are marked with a repeat sign. Measures 25 and 26 contain complex rhythmic patterns with many beamed sixteenth notes. The word 'piano' is written below the first two staves. Below the bass staff, there are dynamic markings: a half note with a sharp sign, the number '43', another half note with a sharp sign, and the number '6'.

27

6 43 6 5

Detailed description: This system contains measures 27 through 31. It features three staves: a top treble staff, a middle treble staff, and a bottom bass staff. Measures 27 and 28 are marked with a repeat sign. Measures 29 and 30 contain complex rhythmic patterns with many beamed sixteenth notes. Below the bass staff, there are dynamic markings: the number '6', the number '43', a half note with a sharp sign, the number '6', the number '5', and a half note with a sharp sign.

30

5 6 # 6

33

piano piano

5 6 # 4 3 6 # 4 3 6

36 *Corrente*

43 6 6 b

43

65 4 4 3 # 4 3

50

Three staves of music. The top staff is in treble clef with a key signature of one sharp (F#). The middle staff is in treble clef with a key signature of one sharp (F#). The bottom staff is in bass clef with a key signature of one sharp (F#). The music consists of eighth and sixteenth notes, with some rests and accidentals.

54

Three staves of music. The top staff is in treble clef with a key signature of one sharp (F#). The middle staff is in treble clef with a key signature of one sharp (F#). The bottom staff is in bass clef with a key signature of one sharp (F#). The music consists of eighth and sixteenth notes, with some rests and accidentals.

4 7^b6 ^b5 4 3 #

59

piano

piano

b 6 # 4 3 6 3

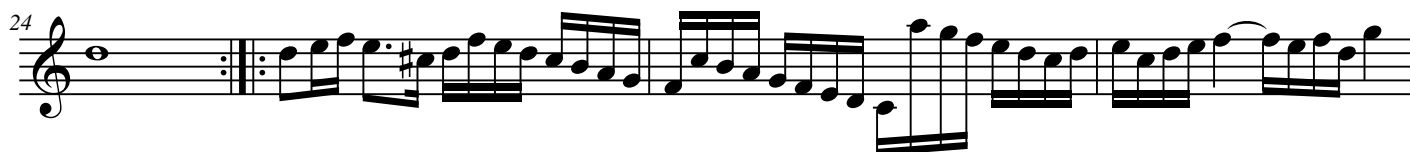


Agostino Guerrieri (c. 1630 - c. 1684)

La Benedetta

Sonata a 2 Violini

Qual si può anco sonare senza Organo però con Teorba & Basso di Viola



36 *Corrente*

Agostino Guerrieri (c. 1630 - c. 1684)

La Benedetta

Sonata a 2 Violini

Qual si può anco sonare senza Organo però con Teorba & Basso di Viola



36 *Corrente*

Agostino Guerrieri (c. 1630 - c. 1684)

La Benedetta

Sonata a 2 Violini

Qual si può anco sonare senza Organo però con Teorba & Basso di Viola

3. Parte



The third part of the exercise is written in bass clef with a common time signature. It begins with a whole rest, followed by a quarter note G2, a quarter note F2, a quarter note E2, and a quarter note D2. This is followed by a quarter note C2, a quarter note B1, a quarter note A1, and a quarter note G1. The piece concludes with a quarter note F1, a quarter note E1, and a quarter note D1.

8



8

16 *Allegro*

The first staff of the 'Allegro' section, measures 16-25. It begins with a bass clef and a common time signature. The key signature has one sharp (F#). The melody consists of eighth and quarter notes, with a trill on the eighth note of measure 18. The staff ends with a double bar line.

[illegible][illegible]

36 *Corrente*

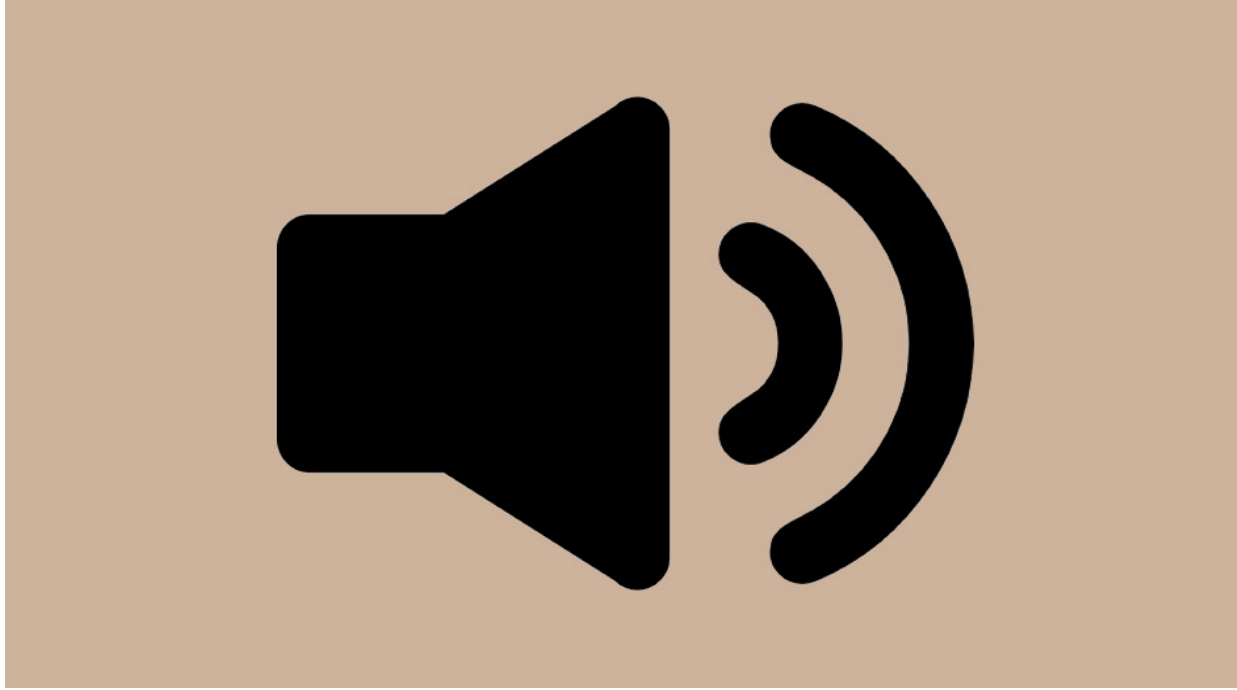
43 

50

50

57

Musical notation for measure 57, featuring a bass clef and a key signature of one flat. The melody consists of eighth notes and quarter notes, ending with a double bar line.



Cliquez sur l'icône pour accéder à des enregistrements sonores

Click on the icon to access sound recordings