

Má Vlast No. 3

Šárka

(Amazon warrior Šárka from the ancient Czech legend about Maidens' War)

Cello.I.

Bedrich Smetana

Allo con fuoco, ma non agitato..

ff sfz sfz sfz sfz

poco rit. rit. sf sfz

cresc sf

ff

cres cen do ff

ritard. dimi.

cres cen do

ff sf sf sf sf sfz

Cello I.

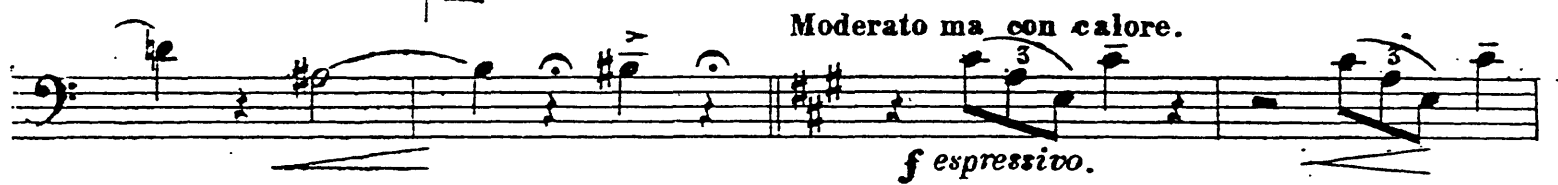
Più moderato assai.

The musical score for Cello I, page 2, consists of ten staves of music. The tempo is marked "Più moderato assai." The key signature is one flat (B-flat). The music features a variety of dynamics and articulations:

- Staff 1: *sf* (sforzando), triplets, and slurs.
- Staff 2: Triplets and slurs.
- Staff 3: *cresc.* (crescendo), *sf* (sforzando), and a long slur.
- Staff 4: *p* (piano), *piu. f* (pianissimo fortissimo), and a long slur.
- Staff 5: *p* (piano), *p* (piano), and a long slur.
- Staff 6: *f* (forte), *p* (piano), and a long slur.
- Staff 7: *piu. p* (pianissimo), and a long slur.
- Staff 8: *p* (piano), and a long slur.
- Staff 9: *f* (forte), and a long slur.
- Staff 10: A long slur.

Cello I.

3



Cello.I.

The musical score for Cello I consists of ten staves. The first staff begins with a piano (*p*) dynamic and includes markings for *accel*, *lerando*, *ed*, and *cresc.*. The second staff features a *crescendo* marking followed by a *pp* (pianissimo) dynamic. The third staff starts with *sf cresc.* (sforzando crescendo) and includes *ff* (fortissimo) and *sfz* (sforzando) markings. The fourth staff begins with *sfz* and includes *f* and *sf cresc* markings. The fifth staff includes *cendo*, *ff*, *sf dimin*, and *p ritard.* markings. The sixth staff is marked *a tempo* and includes *ff*, *sf dimin*, and *p* markings. The seventh staff includes *f*, *sf dimin*, and *po* markings. The eighth staff is divided into two sections: *Adagio.* (marked *tr*) and *Moderato.* (marked *3/4*). The *Adagio* section includes *piu rall* and *p* markings, while the *Moderato* section includes *ff*. The ninth staff includes *sf* markings. The tenth staff includes *sf* markings.

Cello I.

sf marcatisss. *f* *ff*

marcatisss. *sfz*

marcato *f* *sfz*

f *ff* *sfz*

f *cresc* *ff*

mar *ca* *tiss.* *sfz*

f *f*

Cello I.

crescendo.

sfz sfz sfz

dimin. sempre dimin.

pp sempre diminuendo.

pp

dimin possibile

dimin. al pp

Cello I.

7



Molto vivo.



Cello I.

[illegible]

Cello I.

9

Cello I.

sfz

ff

Solo.

f

sfz

ff

f

Solo.

f

sfz

ff

cresc

sfz

ff

sf

sf

sf

Cello II.

Più moderato assai.

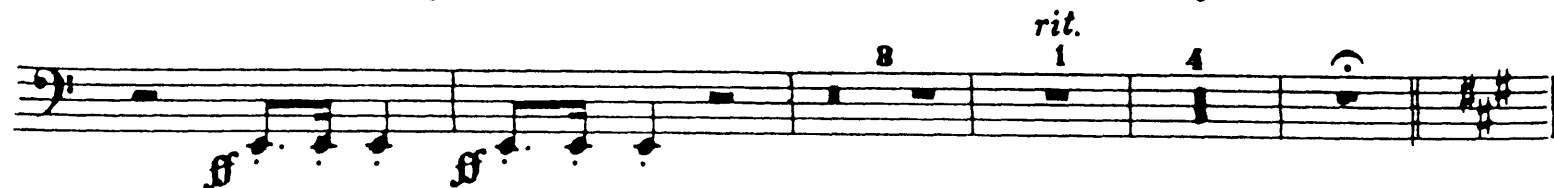
The musical score for Cello II consists of ten staves of music. The tempo is marked "Più moderato assai." The notation includes various dynamics and articulations:

- Staff 1: *f*, *p*, *pizz.*
- Staff 2: No markings.
- Staff 3: *cresc.*, *p*
- Staff 4: *arco.*, *più f.*
- Staff 5: *p*, *p*, *f*
- Staff 6: *p*, *pizz.*
- Staff 7: No markings.
- Staff 8: *p*, *arco.*
- Staff 9: *f*
- Staff 10: *pizz.*, *p*

Cello II.



Molto. cresc.



*Moderato ma con calore.
pizzicato.*



Cello II.

Moderato.

p *ff* *sf* *sf* *marcatissimo.*

8 *ff* *sf* *marcatissimo.* *sfz*

8 *marcatissimo.* *sf* *sfz*

loco *marcatissimo.* *sfz*

sfz *sfz*

ff *sfz* *sfz*

f *crescendo*

marcatissimo. *sf*

Cello II

This musical score for Cello II consists of 26 measures across ten staves. The notation includes various musical symbols such as notes, rests, and dynamic markings. The key signature has two sharps (F# and C#), and the time signature is 4/4. The score includes several performance instructions and dynamic changes:

- Measures 1-4:** Start with a forte (*f*) dynamic. Measure 4 includes the marking *fz*.
- Measures 5-14:** Feature a crescendo (*cresc.*) and a *loco* section. Measure 14 includes the marking *fz*.
- Measures 15-26:** This section includes a *sempre dimin* (always diminishing) instruction. Measure 15 includes the marking *fz*. Measure 16 includes the marking *sempre dimin*. Measure 17 includes the marking *sempre*. Measure 18 includes the marking *pp*. Measure 19 includes the marking *pp*. Measure 20 includes the marking *pp*. Measure 21 includes the marking *pp*. Measure 22 includes the marking *pp*. Measure 23 includes the marking *pp*. Measure 24 includes the marking *pp*. Measure 25 includes the marking *pp*. Measure 26 includes the marking *pp*.
- Measures 27-36:** This section includes a *do* marking. Measure 27 includes the marking *sfz*. Measure 28 includes the marking *sf*. Measure 29 includes the marking *sf*. Measure 30 includes the marking *sf*. Measure 31 includes the marking *sf*. Measure 32 includes the marking *sf*. Measure 33 includes the marking *sf*. Measure 34 includes the marking *sf*. Measure 35 includes the marking *sf*. Measure 36 includes the marking *sf*.
- Measures 37-46:** This section includes a *marcato* marking. Measure 37 includes the marking *marcato*. Measure 38 includes the marking *marcato*. Measure 39 includes the marking *marcato*. Measure 40 includes the marking *marcato*. Measure 41 includes the marking *marcato*. Measure 42 includes the marking *marcato*. Measure 43 includes the marking *marcato*. Measure 44 includes the marking *marcato*. Measure 45 includes the marking *marcato*. Measure 46 includes the marking *marcato*.
- Measures 47-56:** This section includes a *più f* marking. Measure 47 includes the marking *più f*. Measure 48 includes the marking *più f*. Measure 49 includes the marking *più f*. Measure 50 includes the marking *più f*. Measure 51 includes the marking *più f*. Measure 52 includes the marking *più f*. Measure 53 includes the marking *più f*. Measure 54 includes the marking *più f*. Measure 55 includes the marking *più f*. Measure 56 includes the marking *più f*.

Cello II.

The musical score for Cello II consists of ten staves of music. The notation includes various musical symbols such as notes, rests, triplets, and dynamics. The first staff begins with a forte (*f*) dynamic and features a triplet of eighth notes. The second staff continues with a triplet and a crescendo leading to a fortissimo (*ff*) dynamic. The third staff is marked *1000 Più vivo.* and features a series of sixteenth-note chords, with a forte (*f*) dynamic. The fourth staff continues the sixteenth-note chords. The fifth staff features a half note followed by a quarter note, with a forte (*f*) dynamic. The sixth staff features a half note followed by a quarter note, with a forte (*f*) dynamic. The seventh staff features a half note followed by a quarter note, with a forte (*f*) dynamic. The eighth staff features a half note followed by a quarter note, with a forte (*f*) dynamic. The ninth staff features a half note followed by a quarter note, with a forte (*f*) dynamic. The tenth staff features a half note followed by a quarter note, with a forte (*f*) dynamic.