

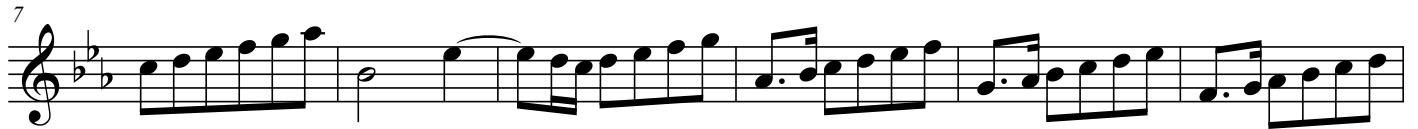
Triosonata in E-flat major

Giuseppe Antonio Brescianello
(ca.1690-1758)

Grave

Presto

Violine I



Adagio.



Presto



Adagio.



Allegro.

3

Violine 1

Violine 1

41

48

53

58

62

65

68

71

74

77

83

The musical score for Violine 1, measures 41 to 83, is written in E-flat major (three flats) and 3/4 time. The tempo is marked 'Allegro.' and the movement is the third of a sonata. The score consists of nine staves of music. Measures 41-47 show a melodic line with some rests. Measures 48-52 introduce a more active melody with eighth notes. Measures 53-57 continue this melodic development. Measures 58-61 show a continuation of the melodic line. Measures 62-64 feature a dense, fast-moving passage with many sixteenth notes. Measures 65-67 continue this fast passage. Measures 68-70 show a continuation of the fast passage. Measures 71-73 continue the fast passage. Measures 74-76 show a continuation of the fast passage. Measures 77-82 show a continuation of the fast passage. Measure 83 shows a continuation of the fast passage.

88

91

93

95

98

106

112

118

123

126

129

This musical score for Violin 1, measures 88 to 129, is written in E-flat major (three flats) and 3/4 time. The notation is on a single staff with a treble clef. Measures 88-90 show a melodic line with eighth and sixteenth notes. Measures 91-94 feature a continuous sixteenth-note scale. Measures 95-97 continue this scale with some beamed eighth notes. Measure 98 is a whole rest. Measures 99-105 show a melodic line with eighth and sixteenth notes, including some ties. Measures 106-111 show a melodic line with eighth and sixteenth notes. Measures 112-117 show a melodic line with eighth and sixteenth notes. Measures 118-122 show a melodic line with eighth and sixteenth notes. Measures 123-125 show a melodic line with eighth and sixteenth notes. Measures 126-128 show a melodic line with eighth and sixteenth notes. Measure 129 is a whole note chord.

Adagio.

Violine 1

132

134

140

143

146

149

153

160

169

176

3

tr

tr

The image displays a musical score for the first violin part of a Trio Sonata in E-flat major by Giovanni Brescianello. The tempo is marked 'Adagio.' The score is written on a single staff in treble clef with a key signature of two flats (B-flat and E-flat). The measures are numbered from 132 to 176. The music features a variety of rhythmic patterns, including eighth and sixteenth notes, often beamed together. There are several trills marked with 'tr' above the notes. A triplet of eighth notes is indicated by a '3' above the notes in measure 135. The score concludes with a double bar line in measure 176.

184

192

201

210

216

222

228

236

246

The image displays a musical score for Violin 1, spanning measures 184 to 246. The key signature is E-flat major (three flats: B-flat, E-flat, A-flat). The score is written on a single staff in treble clef. The notation includes various rhythmic values, including eighth and sixteenth notes, and rests. Trills are indicated by the 'tr' symbol above specific notes in measures 192, 201, 236, and 246. The music features a mix of eighth-note patterns, some with slurs, and occasional sixteenth-note runs. The overall texture is melodic and rhythmic, typical of a violin part in a Baroque-style sonata.

256

264

274

282

288

294

300

308

314

319

tr

This musical score for Violin 1, measures 256-319, is written in E-flat major (three flats) and 3/4 time. The notation is on a single staff with a treble clef. The key signature is E-flat major, indicated by three flats (B-flat, E-flat, A-flat). The score consists of ten staves of music. Measures 256-263 feature a complex, fast-moving melodic line with many beamed sixteenth and thirty-second notes, often grouped in pairs. Measures 264-273 show a continuation of this fast motion, with some measures containing rests for the right hand. Measures 274-281 are characterized by a more melodic, stepwise descent. Measures 282-293 return to a fast, rhythmic pattern of beamed notes. Measures 294-303 continue this fast motion. Measure 304 features a trill (tr) on a note. Measures 305-313 show a continuation of the fast, rhythmic pattern. Measure 314 is a final, slower measure with a few beamed notes. Measures 315-319 conclude the passage with a series of eighth and quarter notes, ending with a double bar line.