

Violonchelo

Serenade

für Streichinstrumente

Ermanno Wolf-Ferrari

Allegro

8 *rit.* *a tempo*

14 *pp* *p* *p*

21 *p*

28 *pp* *pp*

34 *pizz.* *f*

41

48 *arco* 3

A

57 *pp* *grazioso, espr.*

63 *cresc.* *sff*

71 *p* *pp leggiero*

77 *cresc.*

82 *pizz.* *arco* *pp* *f*

90 *sf* *ff*

96 *p*

102 *pp* *pp leggiero*

109 *3* *1.*

118 *2.* *p* *pp* *2*

126

sf *sf* *sf*

133

sf *sf*

144

p *pp* *p*

152

pp eguale

158

pp

164

cresc.

170

f *cresc.*

176

dim.

182

p

188

pp **B**

194

p *p* *<*

200

rit. *a tempo*

p *>*

206

pp *p* *p*

213

p

219

p

225

espr. *>*

231

f *cresc.*

237

ff

243

p *pp*

250

scherzando

pp leggiero *f*

256 *ff* *p* *pp* *f*

262 *ff* *p f* *p f* *p f* *p*

268 **C** *sf* *f* *p* *cresc.*

275 *sf*

282 *p*

289 *f* *p*

296 *f* *espress.* *p*

303 *dim.*

310 *pp*

317 *pp* *pp*

322 *ff* *p*

Andante con intimo sentire

1 *p* *sf* *pp*

7 *mf* *p*

13 *sf* *pp* *f* *pizz.*

19 *sf* *p* *mf*

25 *f* *p* *f*

31 *p* *pp* *pizz.* *arco* **2**

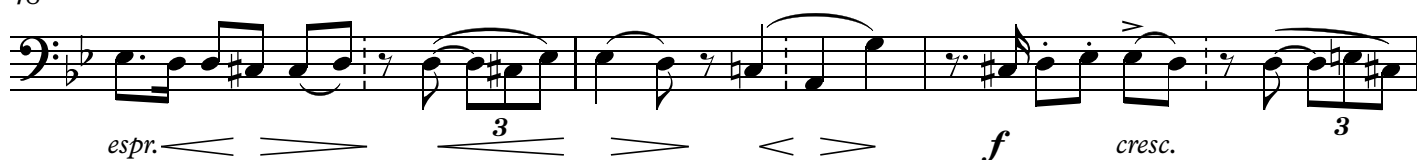
Più mosso. energico rhapsodicamente

38 *f* *p* *f* *p* *ff*

41 *f* *sfz* *>sf* *ff* *tr* *sf*

44 *rit.* *a tempo, tranquillo* *p*

48



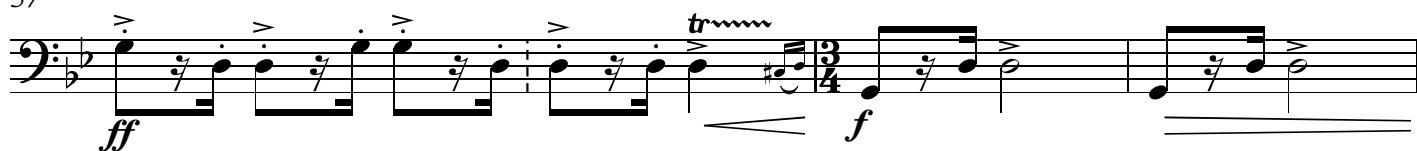
51



54



57



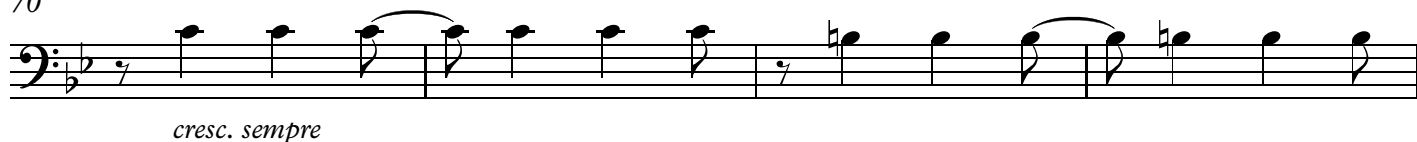
60

*rit.***Tempo I. (Andante)**

65



70

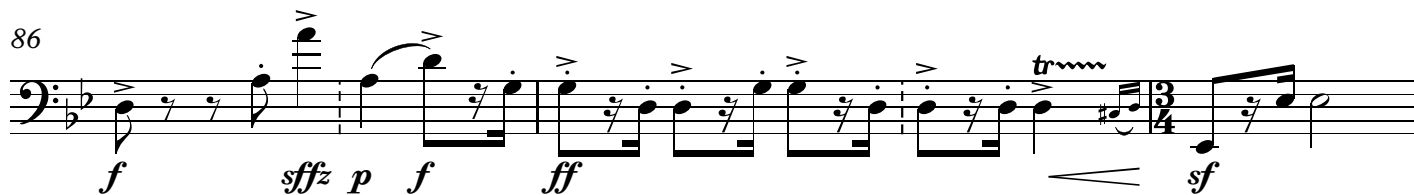


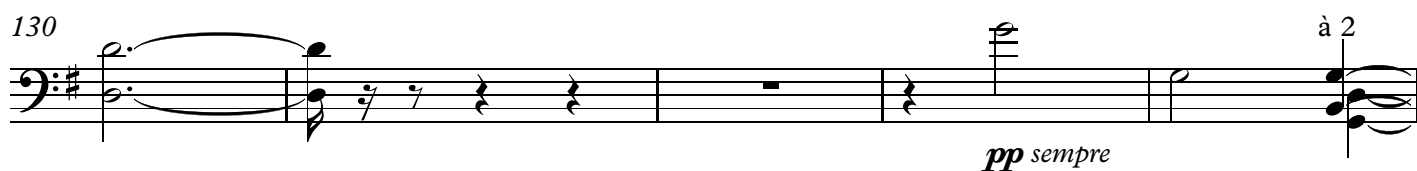
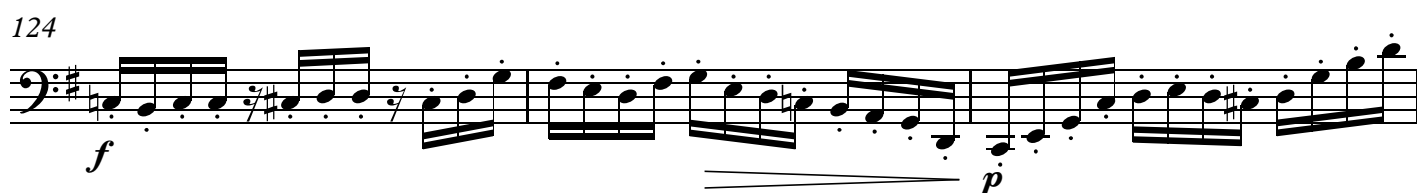
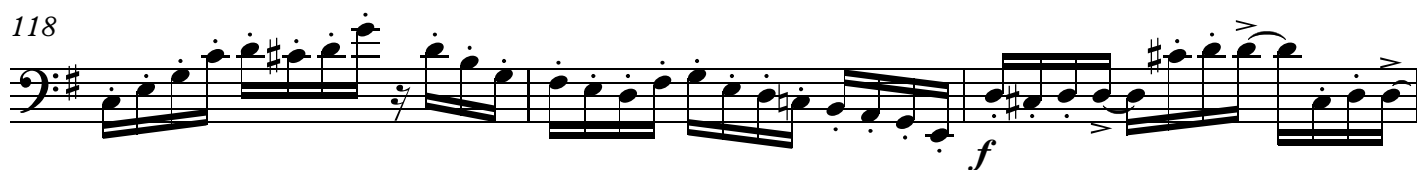
74



78



81 *accel. molto*83 *Tempo II. (Più mosso)*89 *rit.* *a tempo, tranquillo*99 *accel.*102 *tr* *ritard.*

112 **Tempo I. (Andante)**

Scherzo. Presto

Musical score for Violonchelo, Scherzo. Presto. The score is written in bass clef with a 3/4 time signature. It consists of 58 measures, divided into systems of four measures each. The key signature is one flat (B-flat). The score includes various dynamic markings, articulations, and performance instructions.

Measure 1: *p* (piano).
Measure 7: *f* (forte).
Measure 13: *p* (piano).
Measure 18: *f* (forte).
Measure 24: *p cresc.* (piano, crescendo).
Measure 31: *riten.* (ritardando).
Measure 38: *ff* (fortissimo).
Measure 45: *pp* (pianissimo).
Measure 52: *rit.* (ritardando).
Measure 58: *a tempo* (return to tempo).

Additional markings include *arco* (arco), *pizz.* (pizzicato), *f marc.* (forte marcato), *sf* (sforzando), *poco rit.* (poco ritardando), and *leggiere e grazioso e staccato sempre* (light and graceful and staccato always).

64 *a tempo*

p

71 *poco rit.*

sf p

78 *a tempo*

pp p sf p

85 *poco rit.* *a tempo*

p

92 *poco rit.*

sf p

99

1. 2.

pp p pp

105

f ff f

111

ff p cresc.

117

122 *riten.* *a tempo*

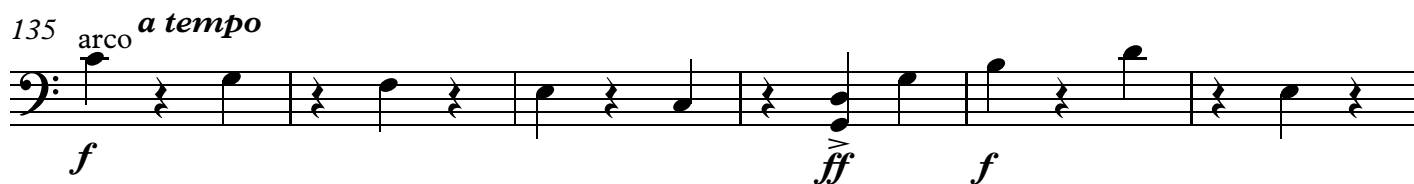
ff

ff

129 pizz. *rit.*



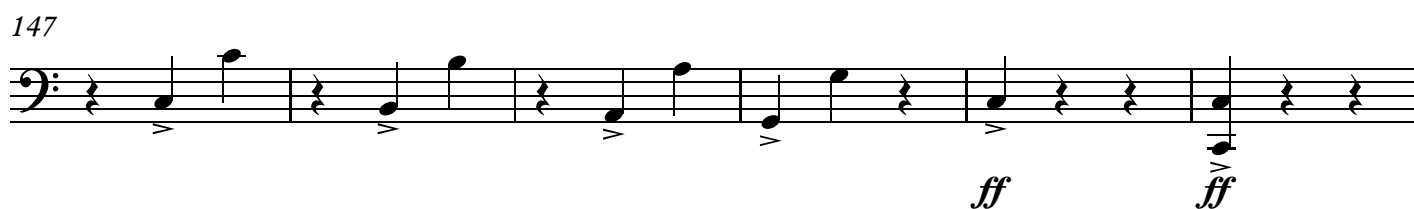
135 arco *a tempo*



141 *f marc.*



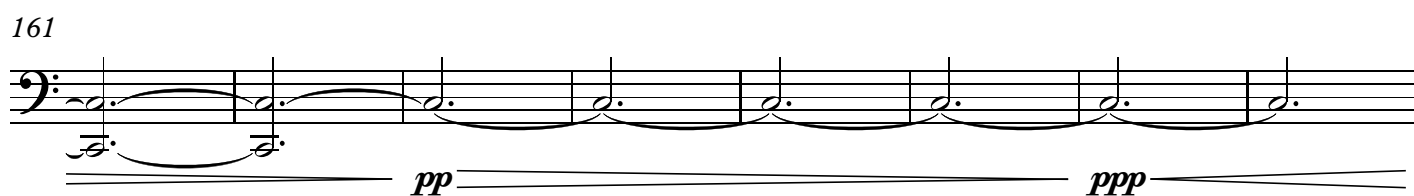
147



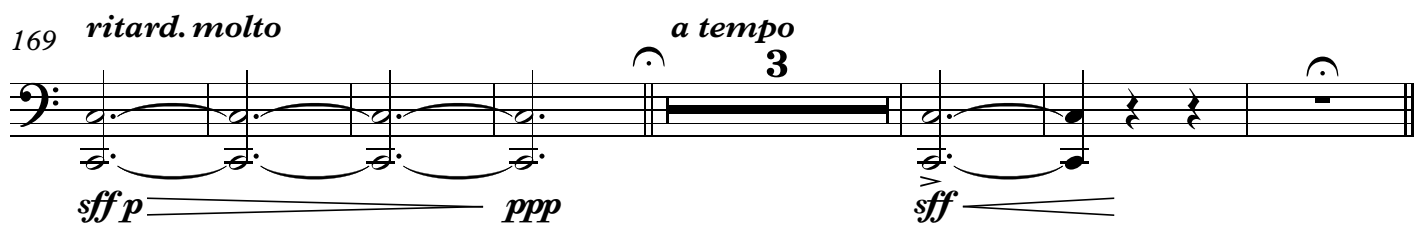
153

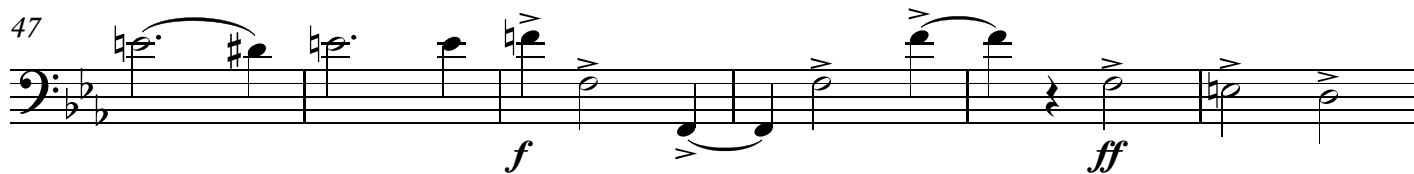
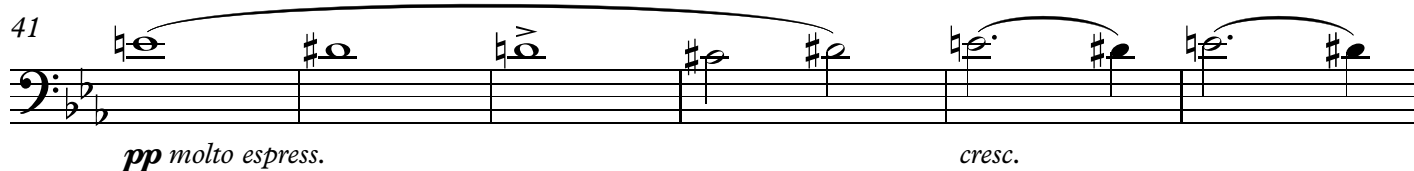
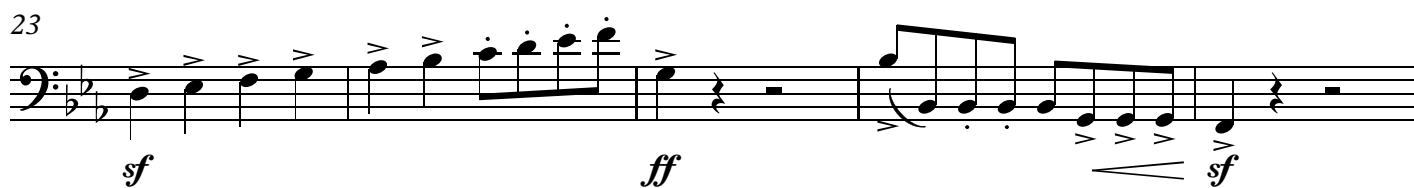
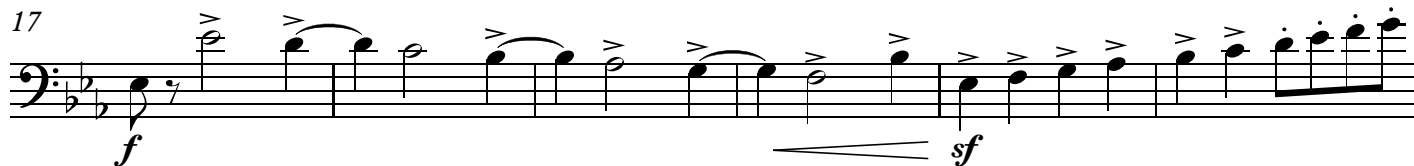
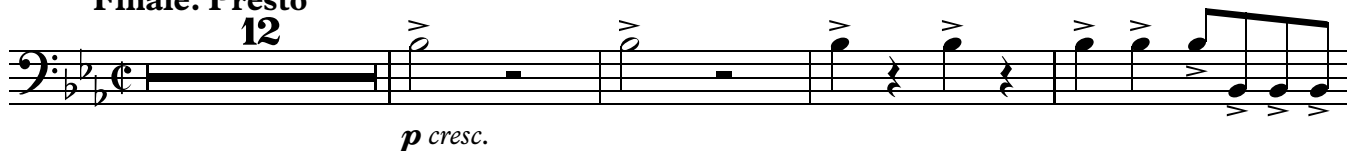


161



169 *ritard. molto* *a tempo* 3

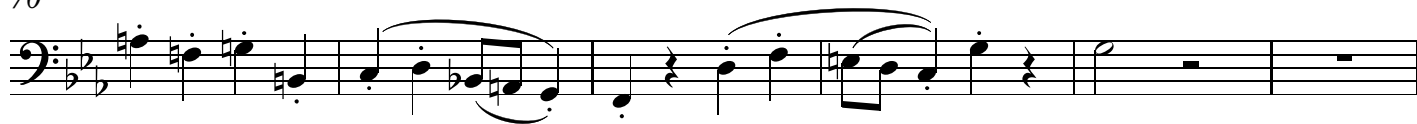


Finale. Presto
12

64



70



76



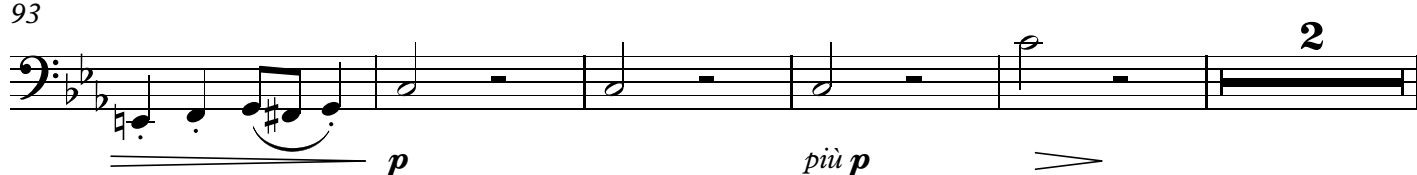
82



88



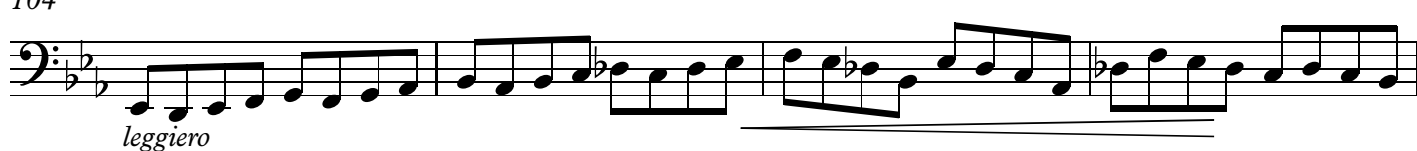
93



100



104

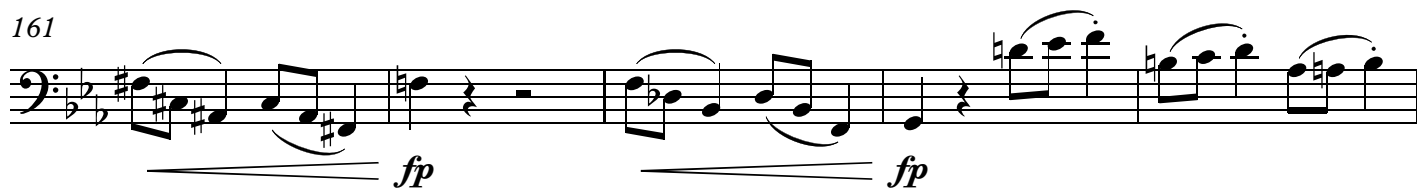
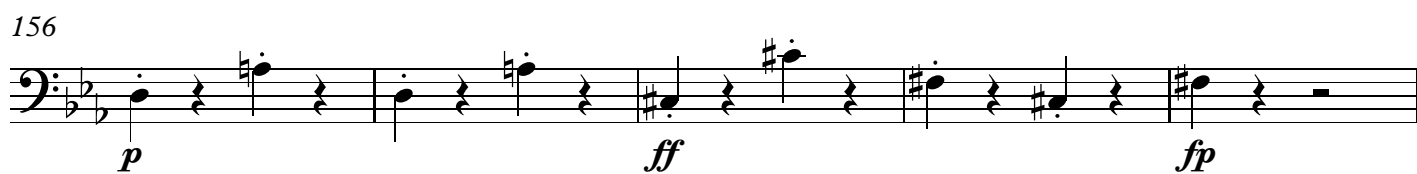
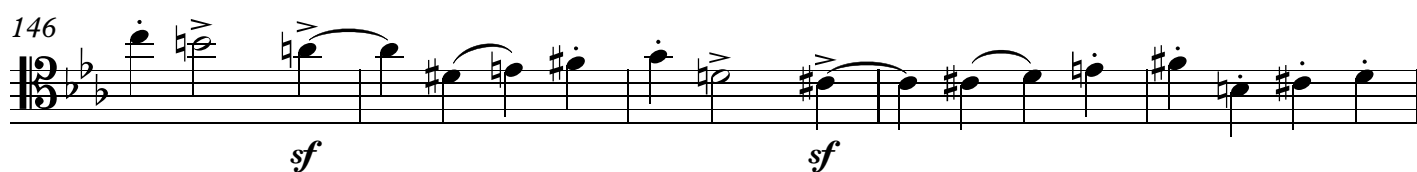
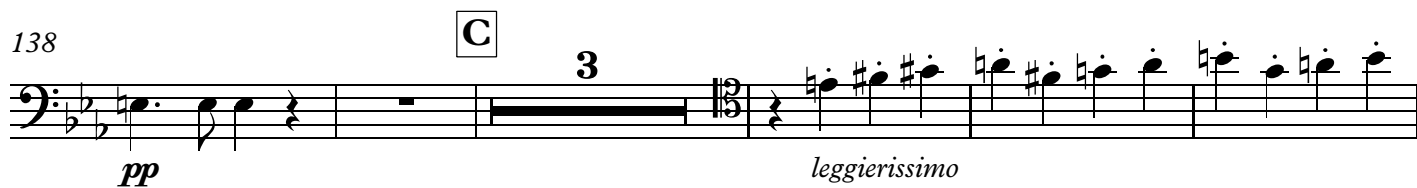
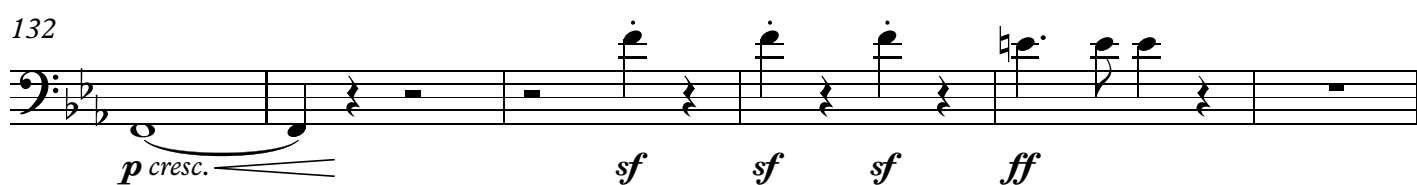


108



112





172 D

pp *pp*

177

leggiero ed eguale

181

cresc.

185

cresc.

190

rit.

197

rit.

204

rit.

210 E *largamente a tempo*

ff *marcatissimo*

214 *a tempo presto*

pp subito e staccato sempre

218

pp subito e staccato sempre

222

ff >

227

233

ff *p*

239

espr.

244

fp

248

252

p

256

f *p*

262

f *p* *f*

268

pizz. *p* *dim.* *2* **F** *4*

278 arco

pp

284 *accelerando*

cresc.

289

294 *Prestissimo*

ff

299

sf

304

3

311 *lunga*

ff *sf*

316 **Tempo I.**

320



324



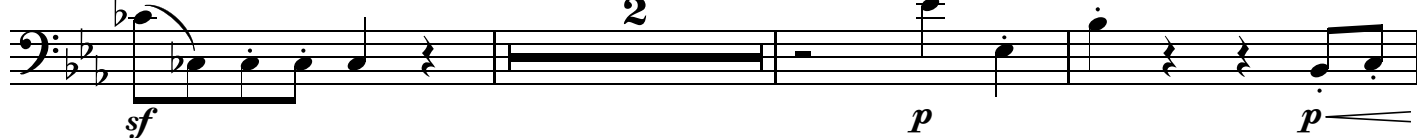
328



333



338



343

