

à Louis Diémer  
Professeur au Conservatoire

Étude de Concert  
pour le Piano



III

III

Copyright

H. 22 16



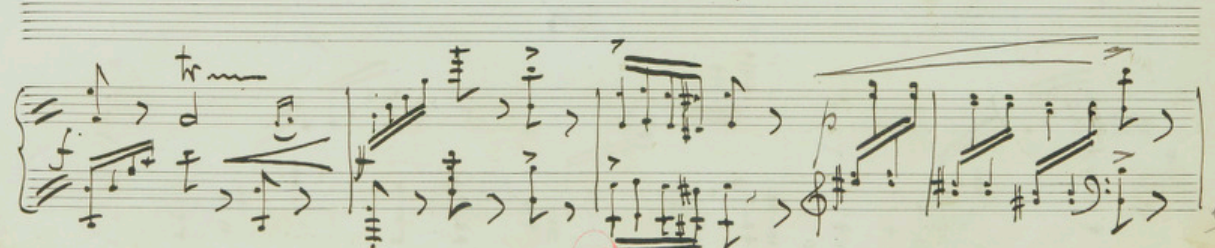
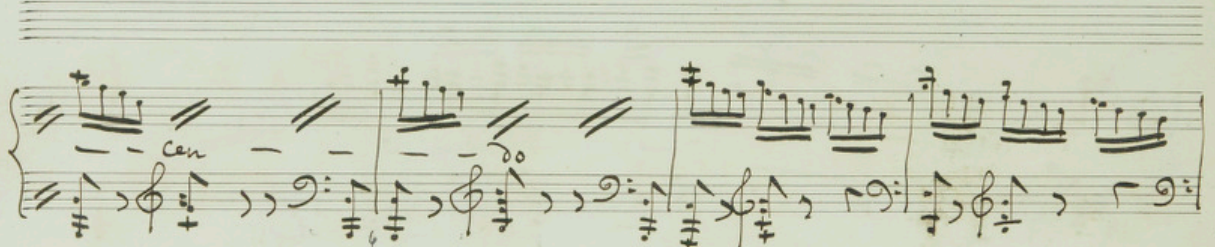
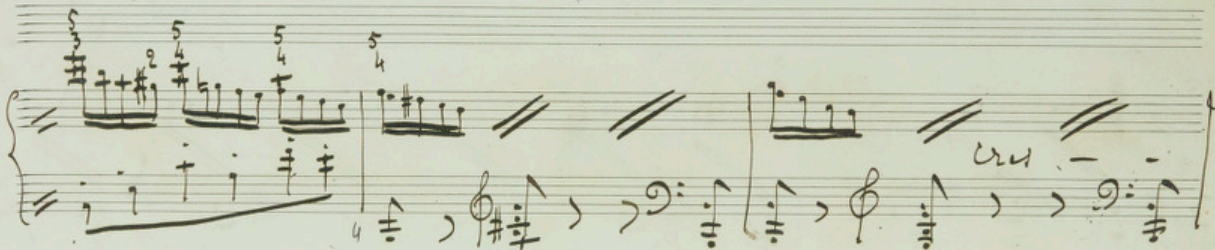
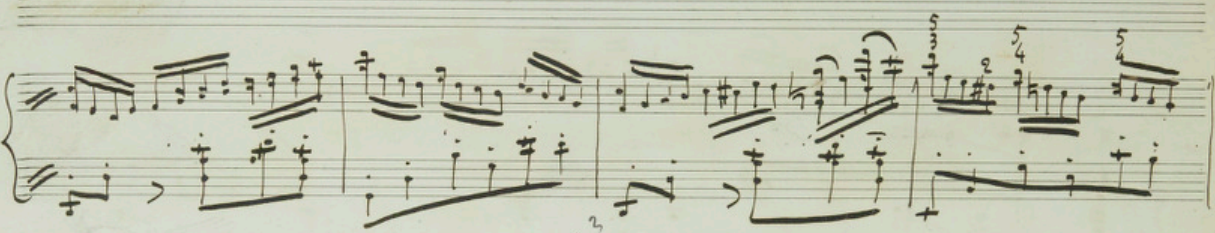
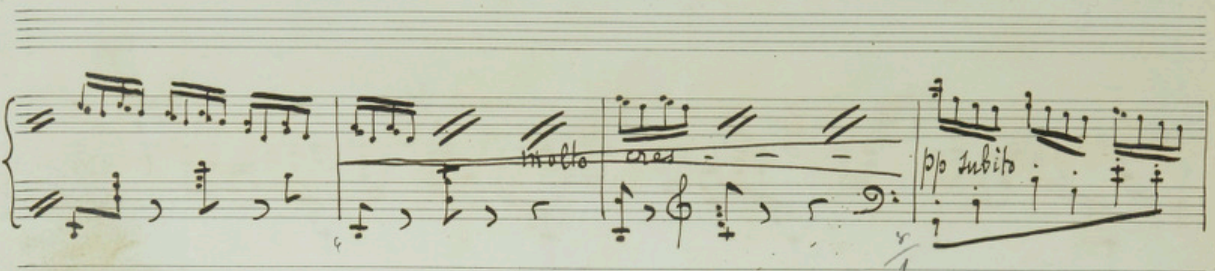
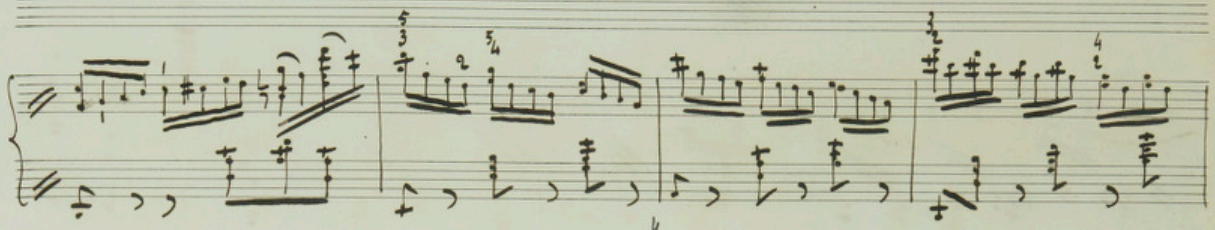
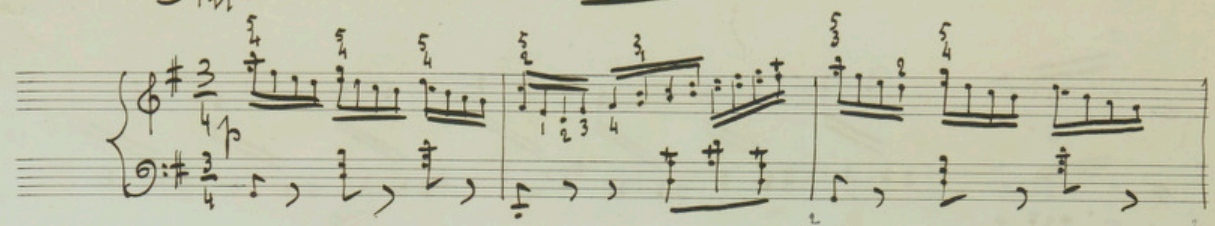
~~Revised  
for Im  
165~~

Res. Vma. ms. 693 (2)



All:

Etude





Handwritten musical notation, first system. It features a grand staff with treble and bass clefs. The music includes various notes, rests, and dynamic markings. Above the staff, the text "cres - poco - a -" is written.

Handwritten musical notation, second system. It continues the piece with similar notation, including a "poco" marking at the beginning.

Handwritten musical notation, third system. The notation includes complex rhythmic patterns and accidentals.

Handwritten musical notation, fourth system. This system features a prominent red circle around a note in the bass staff.

Handwritten musical notation, fifth system. The notation includes various notes and rests, with a small "10" written at the end of the system.

Handwritten musical notation, sixth system. The notation includes various notes and rests, with a small "10" written at the end of the system.

Handwritten musical notation, seventh system. The notation includes various notes and rests, with a small "10" written at the end of the system.



Handwritten musical notation on a grand staff (treble and bass clefs). The key signature has one sharp (F#). The first measure contains a complex chordal structure with many sharps. The second and third measures continue with similar complex textures, featuring many accidentals and slurs.

Handwritten musical notation on a grand staff. The notation continues with complex textures, including many sharps and slurs. The bass line in the third measure has a flat (Bb) and a sharp (F#).

Handwritten musical notation on a grand staff. The first two measures are heavily crossed out with diagonal lines. The third measure shows some notation with slurs and accidentals.

Handwritten musical notation on a grand staff. Above the first measure is the word "Forte." and the time signature "9: # 3/5". The notation includes complex textures with many sharps and slurs.

Handwritten musical notation on a grand staff. The notation continues with complex textures, including many sharps and slurs. There are some markings like "10/6" below the staff.

Handwritten musical notation on a grand staff. The notation continues with complex textures, including many sharps and slurs. There is a marking "2" below the staff in the second measure.

Handwritten musical notation on a grand staff. The notation continues with complex textures, including many sharps and slurs. Above the second measure is the word "dim.". A red circular stamp with the text "inf MUS" is visible near the bottom center.



*cras* *anim*

*dim.*

*poch<sup>mo</sup> rit*

*a tempo*



Handwritten musical notation, first system. It consists of two staves. The upper staff contains a series of eighth and sixteenth notes, some with accidentals. The lower staff contains a bass line with eighth notes and rests.

Handwritten musical notation, second system. It consists of two staves. The upper staff has a melodic line with slurs. The lower staff has a bass line. Handwritten annotations include "molto cresc" above the first measure and "pp subito" above the last measure. A "10" is written below the last measure of the lower staff.

Handwritten musical notation, third system. It consists of two staves. The upper staff features complex chords and melodic lines with many accidentals. The lower staff has a bass line with some accidentals.

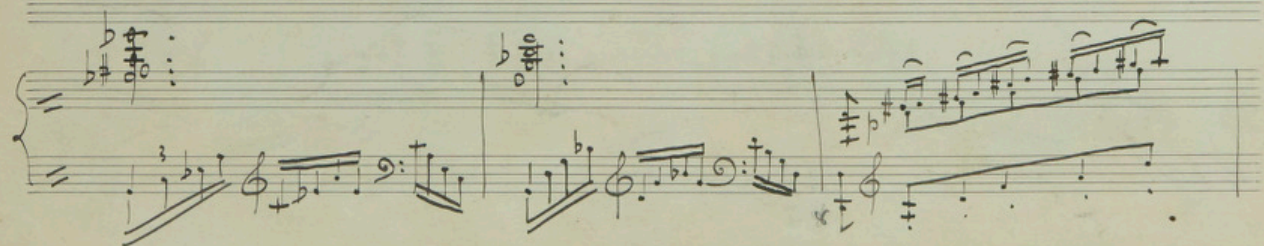
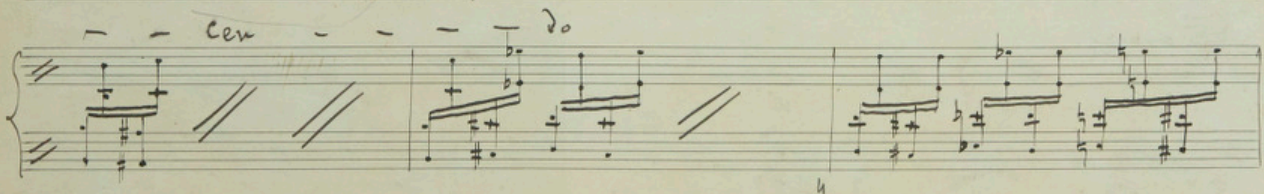
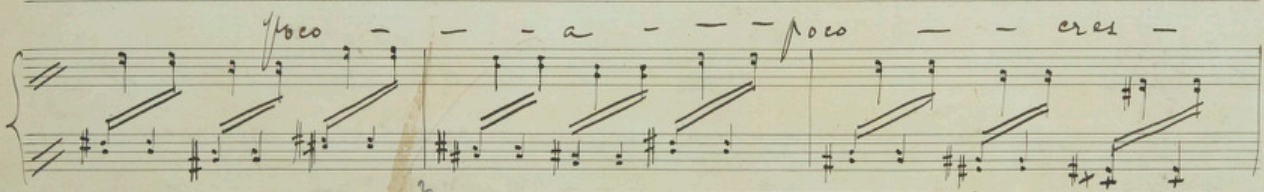
Handwritten musical notation, fourth system. It consists of two staves. The upper staff has a melodic line with slurs. The lower staff has a bass line. Handwritten annotations include "poco" above the third measure and "a poco" above the last measure.

Handwritten musical notation, fifth system. It consists of two staves. The upper staff has a melodic line with slurs. The lower staff has a bass line. Handwritten annotations include "cres" above the first measure, "cen" above the second measure, and "pp" above the last measure. A "6" is written below the last measure of the lower staff.

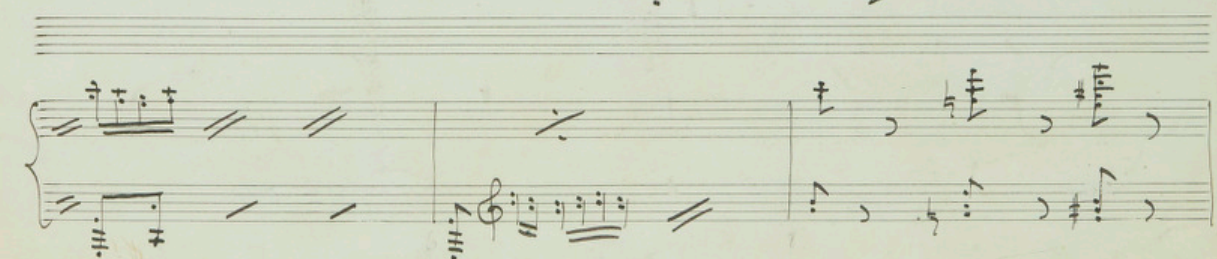
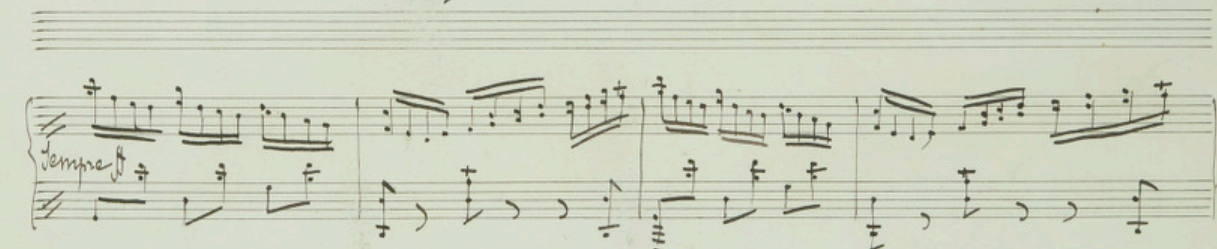
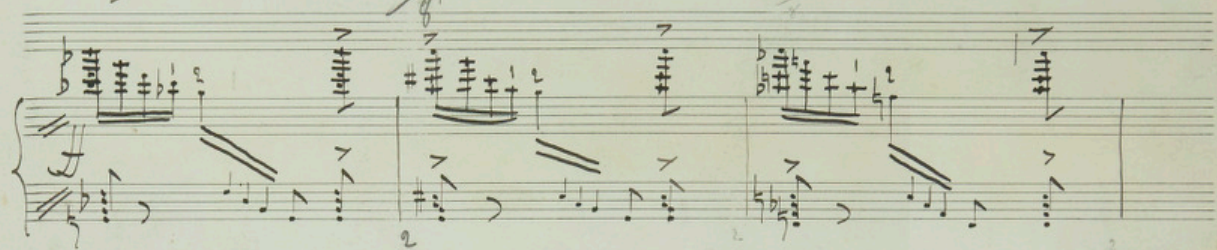
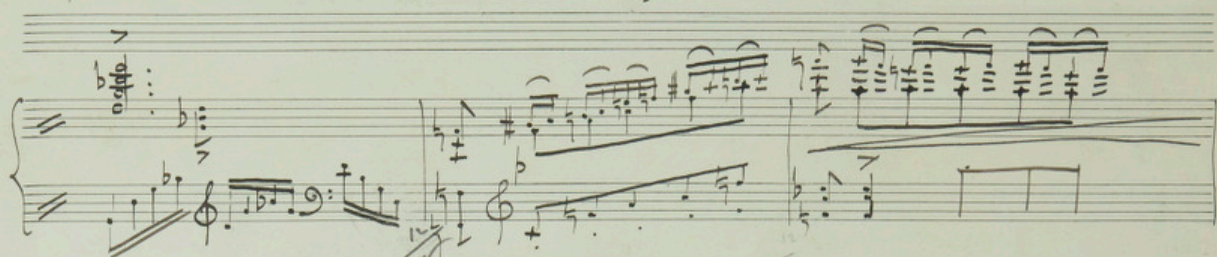
Handwritten musical notation, sixth system. It consists of two staves. The upper staff has a melodic line with slurs. The lower staff has a bass line. There are some accidentals and slurs throughout the system.

Handwritten musical notation, seventh system. It consists of two staves. The upper staff has a melodic line with slurs. The lower staff has a bass line. Handwritten annotations include "Sempre cres" above the first measure. A red circular stamp is visible at the bottom center of the page.

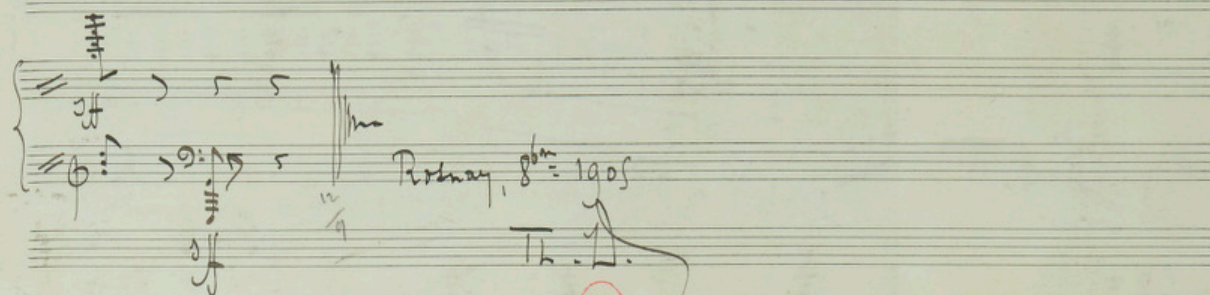
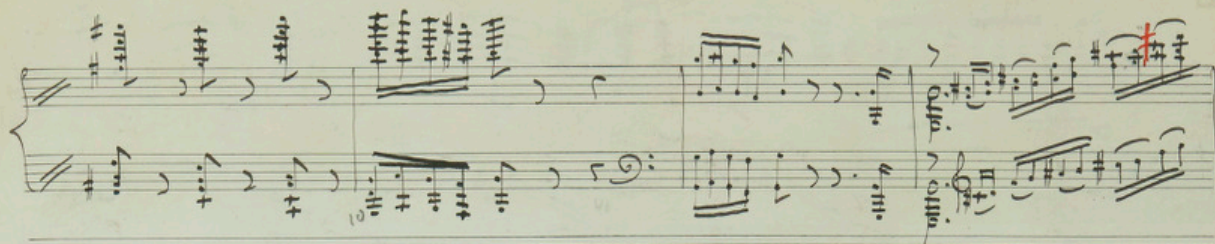












Rothney, 8<sup>th</sup> 1905

Th. A.

