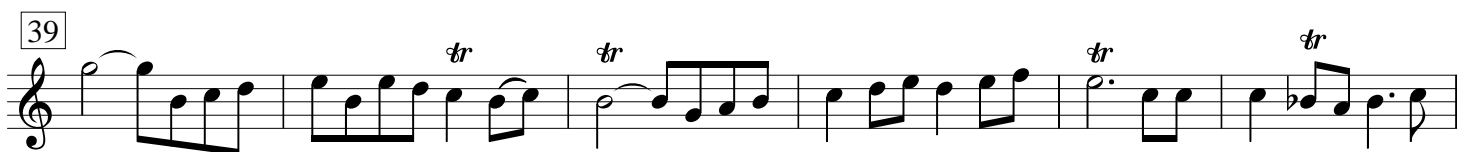
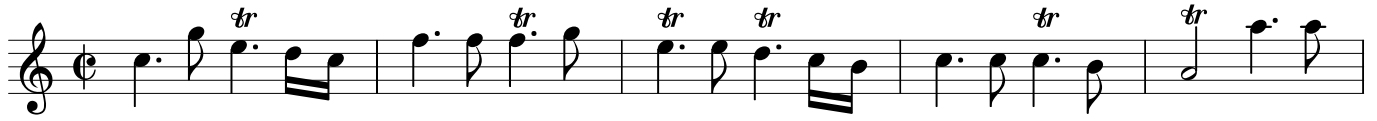


Ouverture und Suiten aus Thésée¹

J.-B. Lully

Ouverture

Oboe 2



[1. Suite]

1. Prélude



7 Trio



15 tous



21 Trio



29 Trio



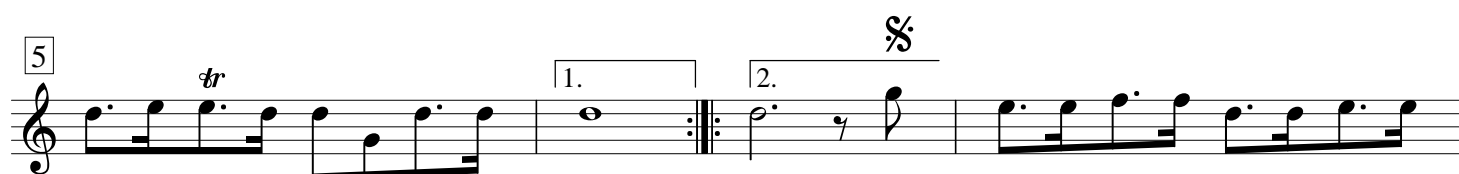
37 tous



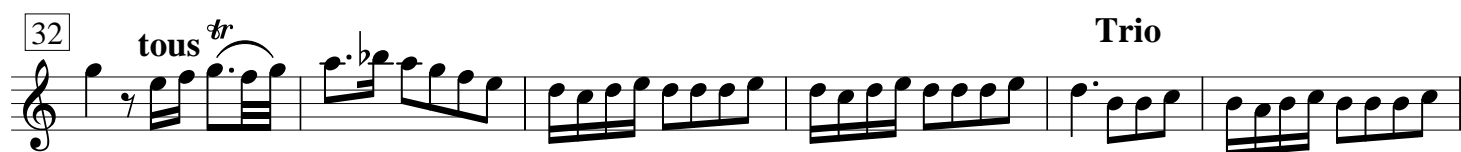
2. Trio



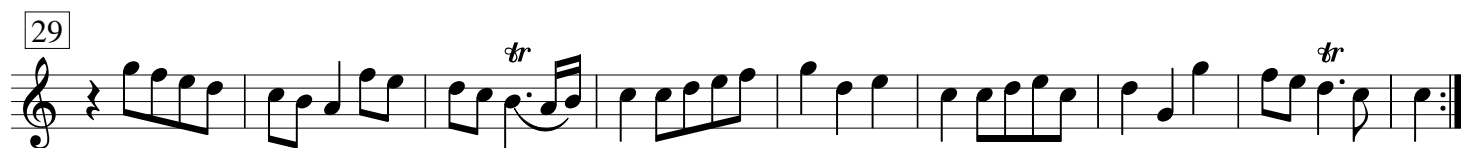
3. Combattans



4. [Air]



5. Air

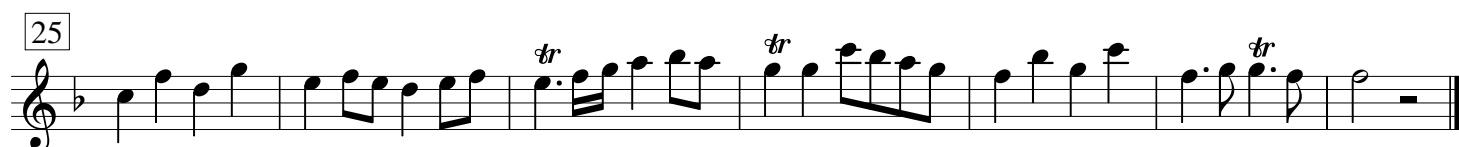
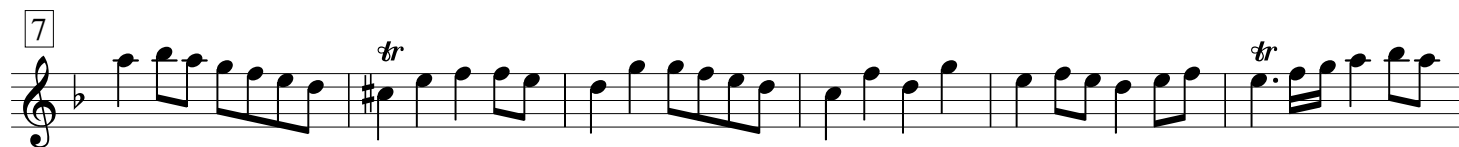


6. Trio

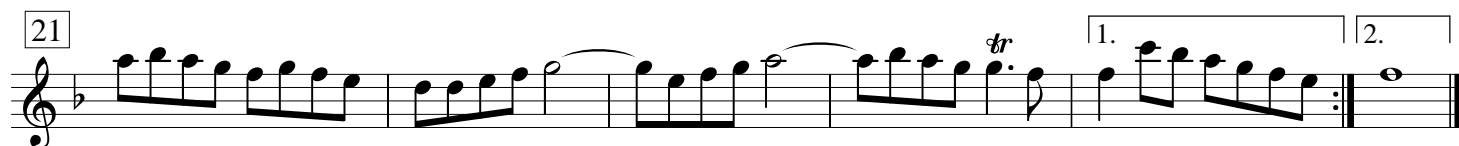
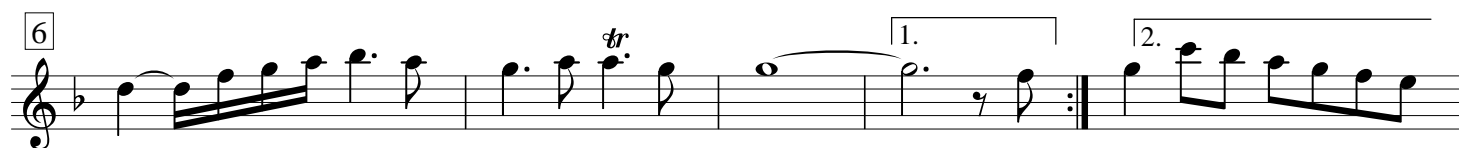


2. Suite

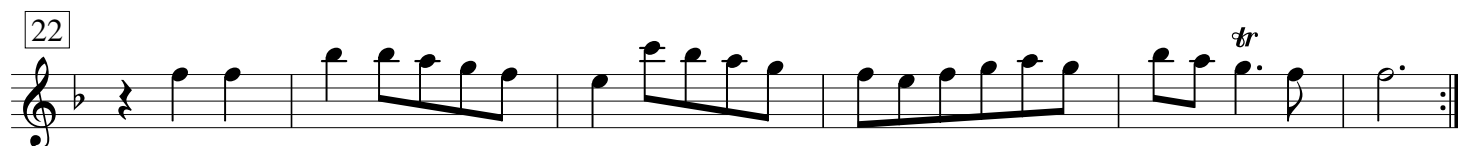
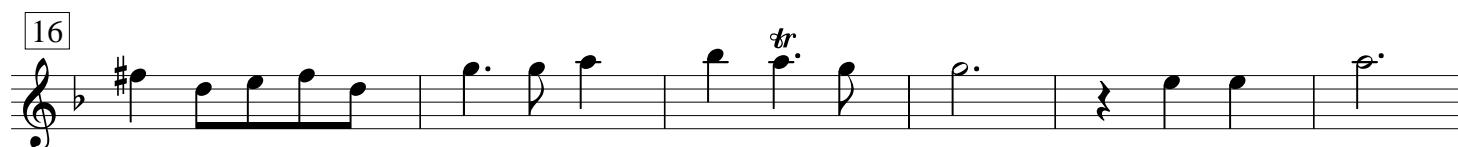
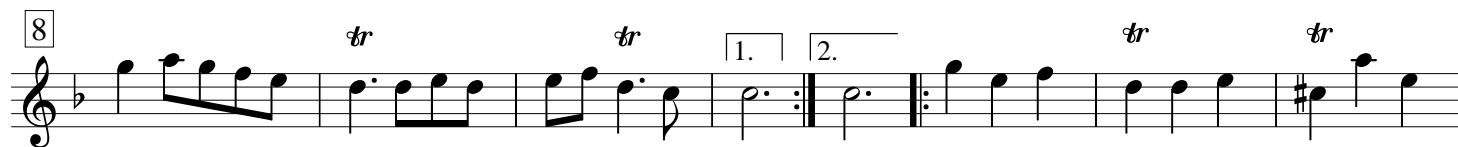
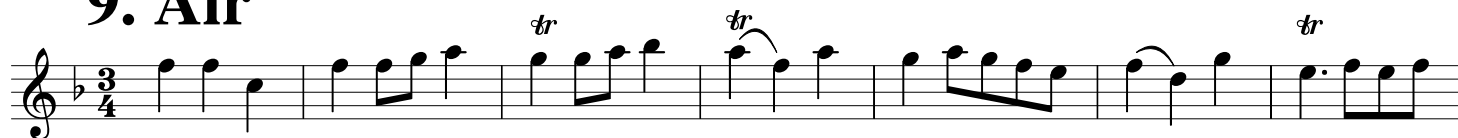
7. Prélude



8. Air



9. Air



3. Suite

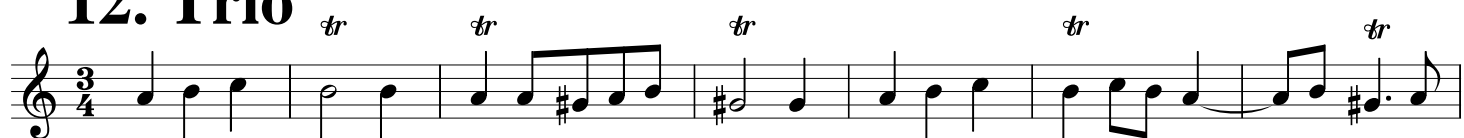
10. Prélude

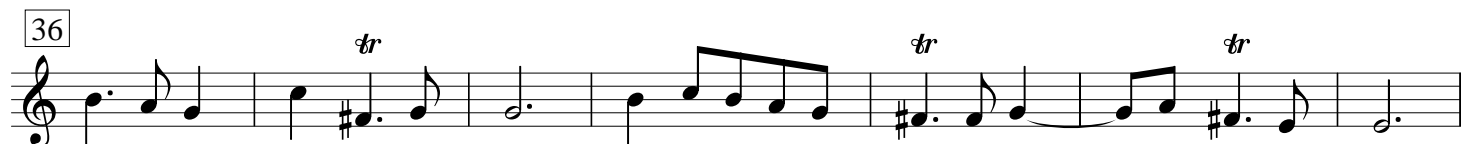
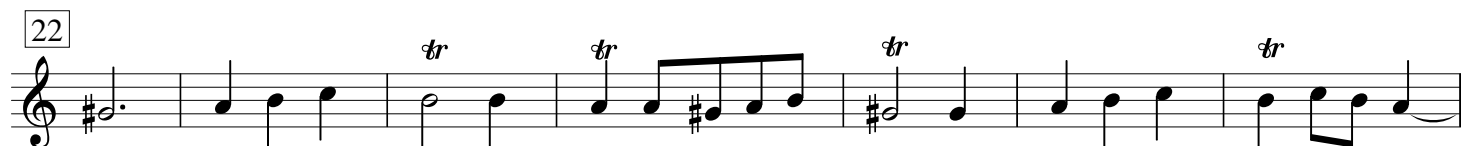


11. Air



12. Trio





13. Air



14. Air

[illegible]

15. Gique

14

Exercise 14 is a single staff in treble clef with a key signature of one flat (Bb). The melody consists of eighth and quarter notes, ending with a double bar line.

da capo §