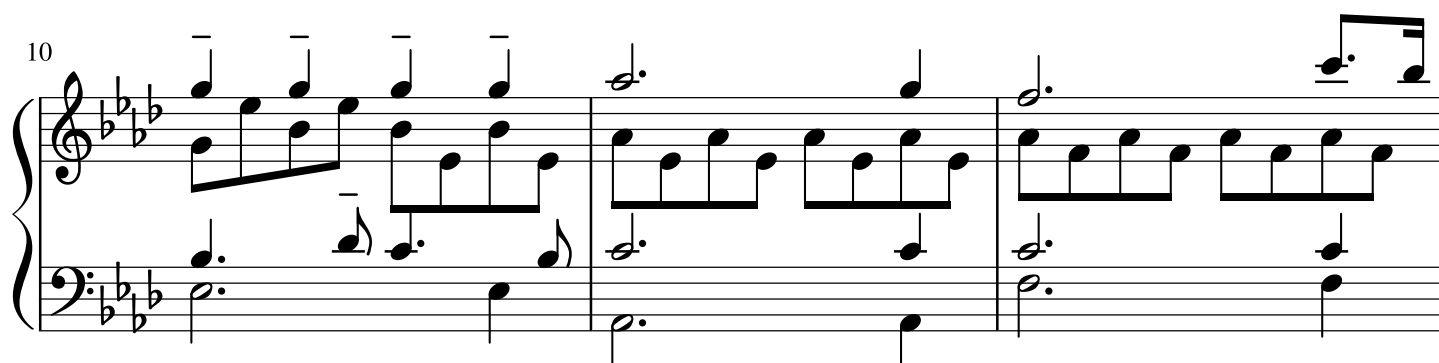
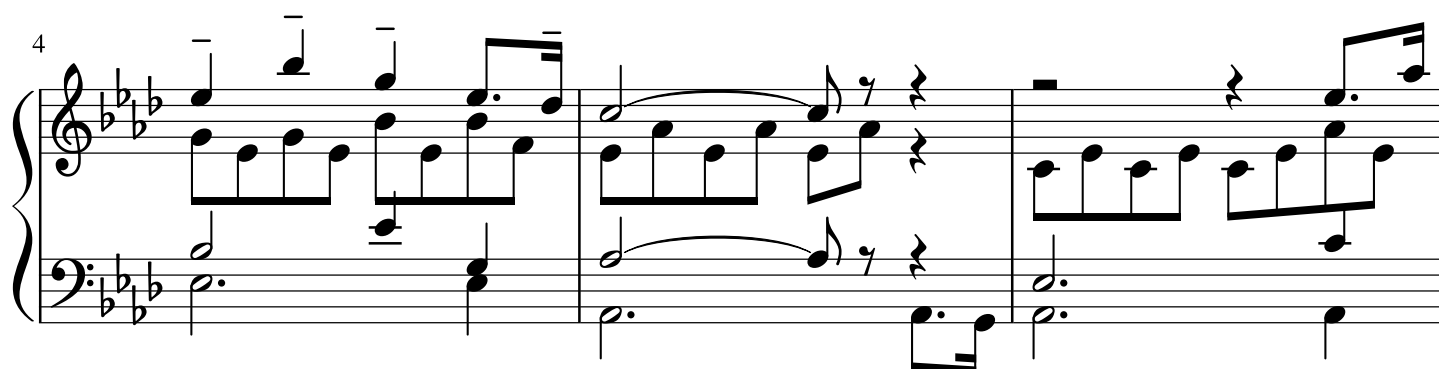
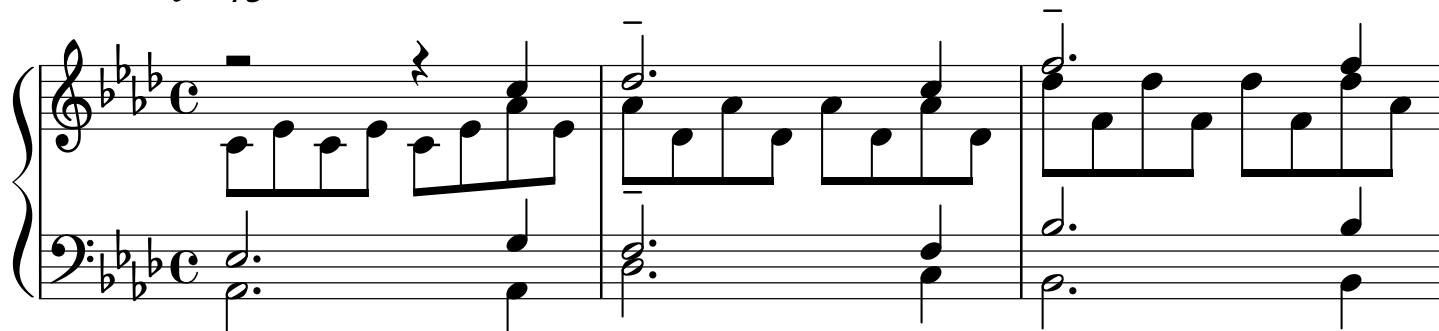


Romanza senza parole n°10

di Claudio Macchi

$\text{♩} = 75$



13

Measures 13-15 of a musical score in 3/4 time, key of B-flat major. The right hand features a melody of eighth notes, often beamed in pairs, with occasional quarter notes and a half note. The left hand provides a harmonic accompaniment with a steady eighth-note bass line and occasional chords. Measure 15 ends with a repeat sign.

16

Measures 16-18 of the musical score. The right hand continues the eighth-note melody, with some measures featuring beamed sixteenth notes. The left hand maintains the eighth-note accompaniment. Measure 18 concludes with a repeat sign.

19

Measures 19-22 of the musical score. Measures 19 and 20 continue the established patterns. Measure 21 features a half-note melody in the right hand over a sustained bass line. Measure 22 is the final measure of this section, ending with a double bar line.