

Stoic Inspiration

a piano solo

Joe Fried

♩ = 90

mp

p

Measures 1-3 of the piece. The key signature is one sharp (F#) and the time signature is 4/4. The tempo is marked as quarter note = 90. The first staff (treble clef) begins with a melody in measure 1, followed by a sustained chord in measure 2, and then a descending line in measure 3. The second staff (bass clef) provides harmonic support with chords and a melodic line in measure 1, and sustained chords in measures 2 and 3. Dynamics include mezzo-piano (mp) and piano (p).

4

Measures 4-7. The melody in the treble clef continues with eighth and sixteenth notes. The bass clef features a prominent eighth-note arpeggiated pattern in measure 4, which transitions into sustained chords in measures 5, 6, and 7.

8

Measures 8-10. The treble clef melody consists of eighth and sixteenth notes. The bass clef continues with sustained chords and a melodic line in measure 8, then transitions to sustained chords in measures 9 and 10.

11

Measures 11-14. The treble clef features a more active melody with eighth and sixteenth notes. The bass clef provides harmonic support with sustained chords and a melodic line in measure 11, then transitions to sustained chords in measures 12, 13, and 14.

15

mp

p

Measures 15-18. The treble clef melody continues with eighth and sixteenth notes. The bass clef features a melodic line in measure 15, then transitions to sustained chords in measures 16, 17, and 18. Dynamics include mezzo-piano (mp) and piano (p).

19



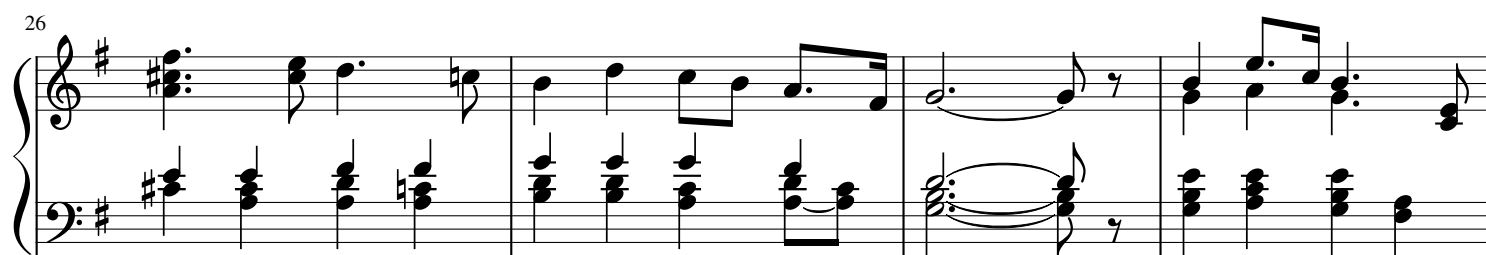
System 19-22: Treble and bass staves in G major. Treble staff features eighth-note and quarter-note patterns. Bass staff features block chords and eighth-note accompaniment.

23



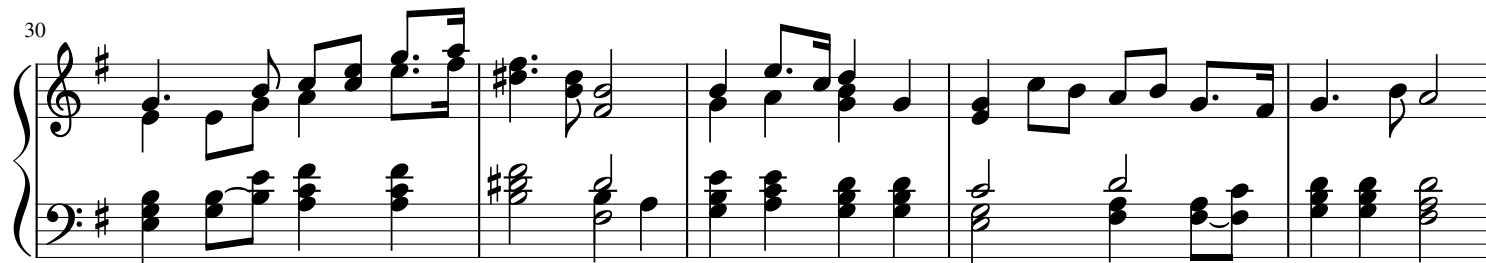
System 23-25: Treble staff continues with eighth-note patterns. Bass staff features block chords and eighth-note accompaniment.

26



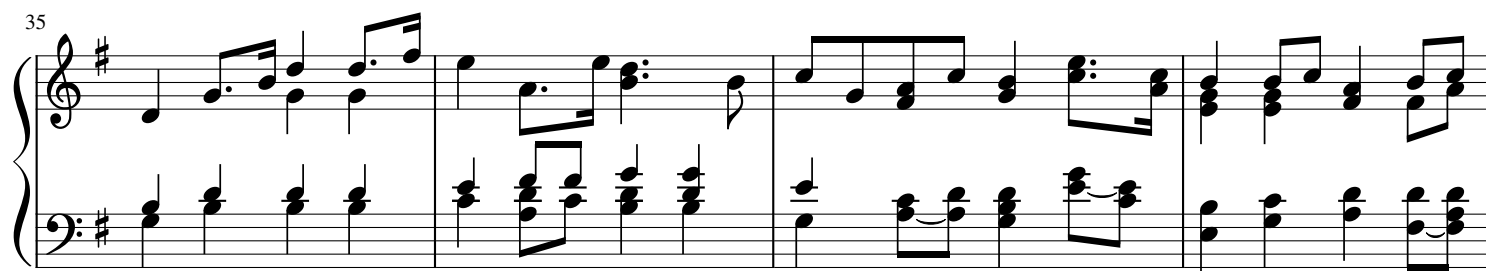
System 26-29: Treble staff includes a half note and a quarter note. Bass staff features block chords and eighth-note accompaniment.

30



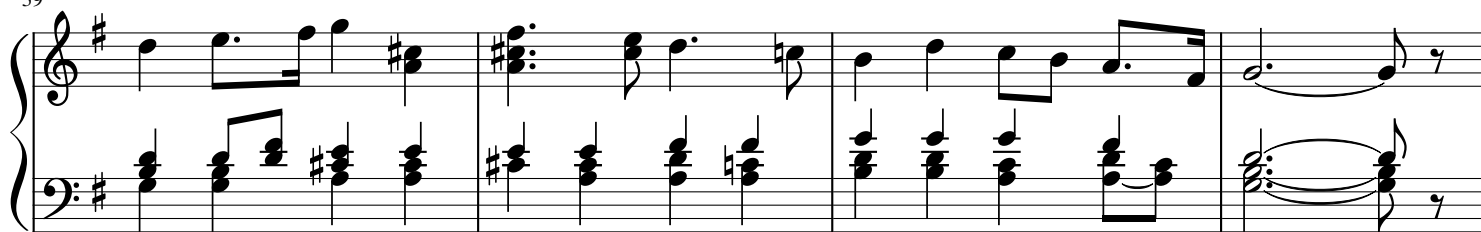
System 30-34: Treble staff continues with eighth-note patterns. Bass staff features block chords and eighth-note accompaniment.

35



System 35-38: Treble staff continues with eighth-note patterns. Bass staff features block chords and eighth-note accompaniment.

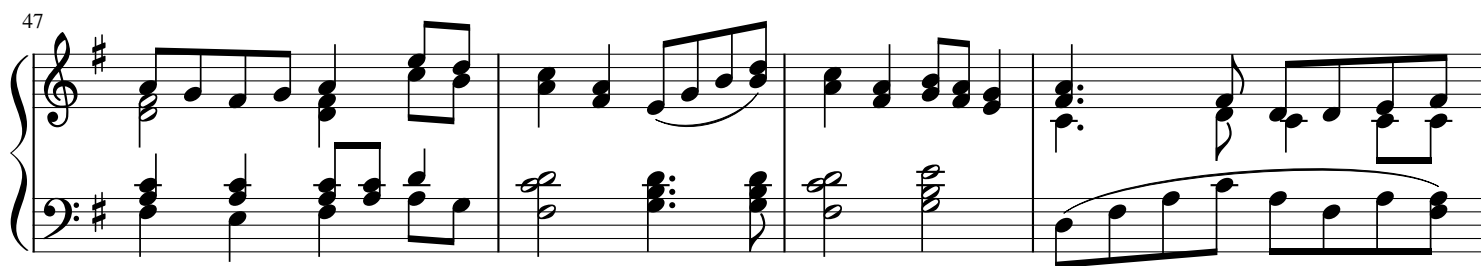
39



43

*p*

47



51



55

♩ = 80

