

LE JOURNAL DU PRINTEMPS

Suite 1 Ouverture

Haute Contre

*Johann Kaspar
Ferdinand Fischer*

7

13

17

21

25

29

33

Marche

6

12

1 2

Air des Combattans

Vite

6

11

17

22

28

33

38

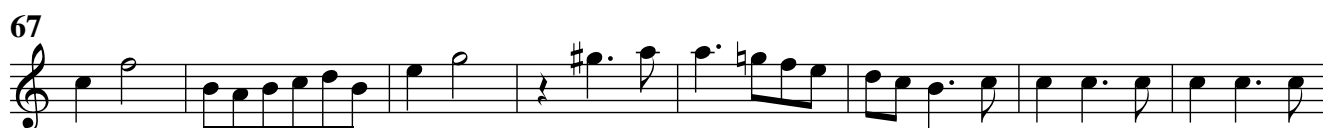
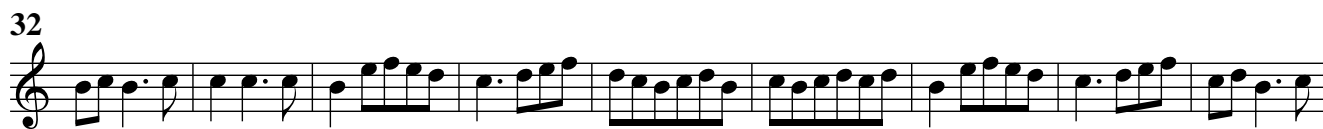
Rigaudon

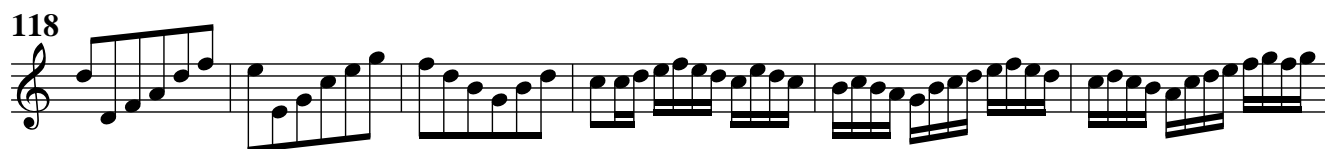
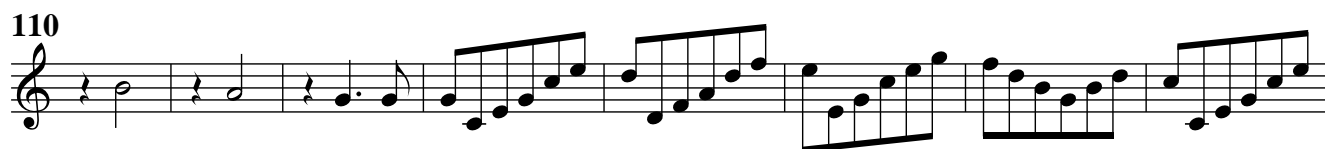
Musical score for Rigaudon, Haute Contre part. The score is written in treble clef with a common time signature (C). It consists of three staves of music. The first staff contains measures 1 through 5. The second staff, starting at measure 6, includes a repeat sign at the end. The third staff, starting at measure 11, includes first and second endings marked with '1' and '2' respectively.

Menuet

Musical score for Menuet, Haute Contre part. The score is written in treble clef with a 3/4 time signature. It consists of three staves of music. The first staff contains measures 1 through 8. The second staff, starting at measure 9, includes a repeat sign at the beginning. The third staff, starting at measure 19, includes a repeat sign at the end.

Chaconne





Plainte

Lentement

Gique



Bourrée



Trio



Bourrée da capo

Menuet



Suite 3

Ouverture

Haute Contre

*Johann Kaspar
Ferdinand Fischer*

5

10

14

18

22

26

30

35

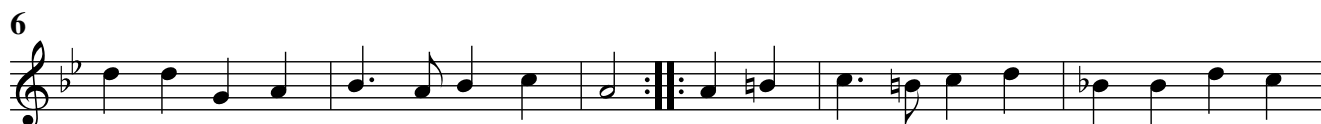
Menuet



Gavotte

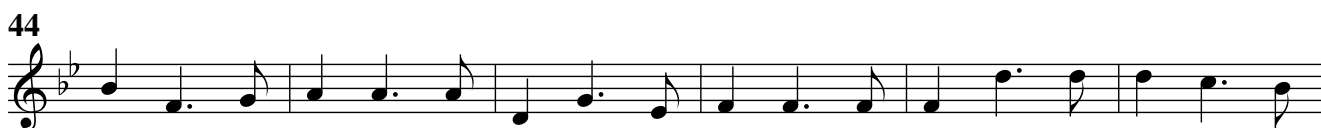
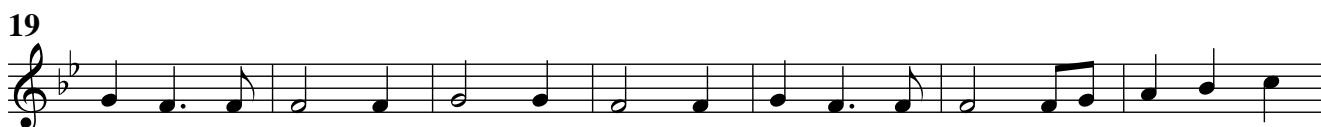


Trio



Gavotte da capo

Chaconne



62

68

73

79

85

90

95

100

106

111

114

1

2

Suite 4

Ouverture

*Johann Kaspar
Ferdinand Fischer*

Haute Contre

6

11

16

21

26

31

36

41

46

51

56

Entrée

5

9

13

16

20

Rondeau

10

19

28

38

Fine

Gavotte

Measures 1-11 of the Gavotte. The key signature has one flat (B-flat). The time signature is common time (C). The melody consists of eighth and quarter notes, with some measures containing a sharp sign (+) above the notes. Measure 11 ends with a double bar line and repeat dots.

Menuet

Measures 1-11 of the Menuet. The key signature has one flat (B-flat). The time signature is 3/4. The melody is composed of quarter and eighth notes. Measures 6 and 11 include first and second endings, indicated by bracketed numbers 1 and 2 above the notes.

Passacaille

Measures 1-32 of the Passacaille. The key signature has one flat (B-flat). The time signature is 3/4. The piece features a repeating eighth-note pattern in the right hand. Measures 9, 17, 25, and 32 are marked with measure numbers at the beginning of their respective lines.

38



44



51



57



62



66



69



73



78



83



90



97



106



+



Suite 5

Haute Contre

Ouverture

*Johann Kaspar
Ferdinand Fischer*

5

9

14

17

20

23

26

29

32

35

39

Entrée



Chaconne

6

12

18

24

29

35

41

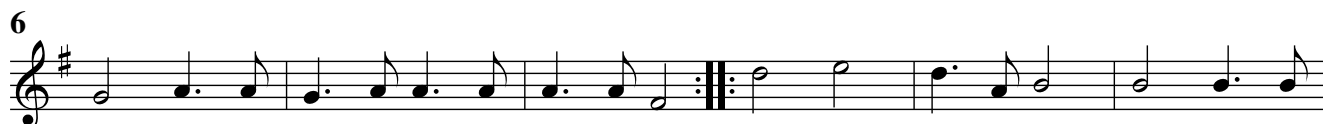
47

53

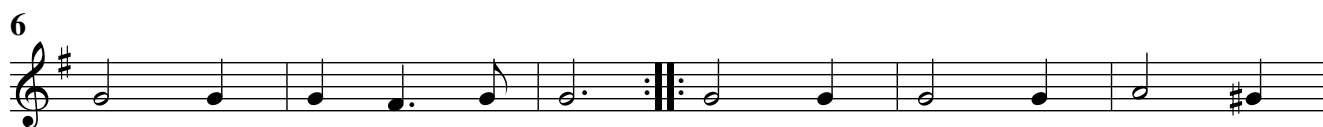
58

64

Traquenard



Menuet



Suite 6

Ouverture

*Johann Kaspar
Ferdinand Fischer*

Haute Contre

7

13

20

28

36

44

52

60

Brandle

6

12

19

25

33

1

2 Gay

Amener

8

16

Gavotte

6

Courante

5

9

The Courante is written in 3/2 time and F major. It consists of three staves. The first staff contains the first six measures. The second staff, starting at measure 5, contains measures 7 through 10, including a repeat sign at measure 8. The third staff, starting at measure 9, contains measures 11 through 14, ending with a repeat sign at measure 14.

Sarabande

9

The Sarabande is written in 3/4 time and F major. It consists of two staves. The first staff contains measures 1 through 8. The second staff, starting at measure 9, contains measures 9 through 16, including a repeat sign at measure 16.

Bourrée

5

11

The Bourrée is written in 2/4 time and F major. It consists of three staves. The first staff contains measures 1 through 4. The second staff, starting at measure 5, contains measures 5 through 10, including a repeat sign at measure 10. The third staff, starting at measure 11, contains measures 11 through 16, ending with a repeat sign at measure 16.

Menuet

9

The Menuet is written in 3/4 time and F major. It consists of two staves. The first staff contains measures 1 through 8, with first and second endings marked at the end. The second staff, starting at measure 9, contains measures 9 through 16, also with first and second endings marked at the end.

Suite 7

Ouverture

Haute Contre*Johann Kaspar
Ferdinand Fischer*

6

12

17

20

23

26

30

34

Passacaille

9

16

24

30

37

45

53

60

66

73

80

87

94



100



107



114



Bourrée



6



11



Menuet



7



13



19



Suite 8

Ouverture

*Johann Kaspar
Ferdinand Fischer*

Haute Contre

6

12

17

21

25

29

33

37

41

45

52



59



Entrée



6



11



15



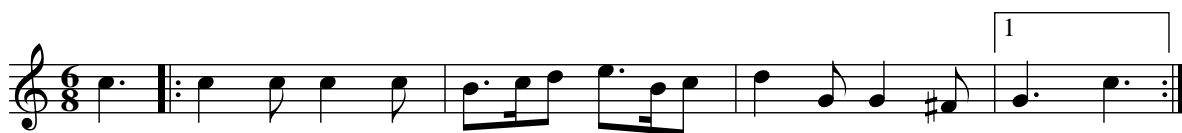
20



24



Canaries



5



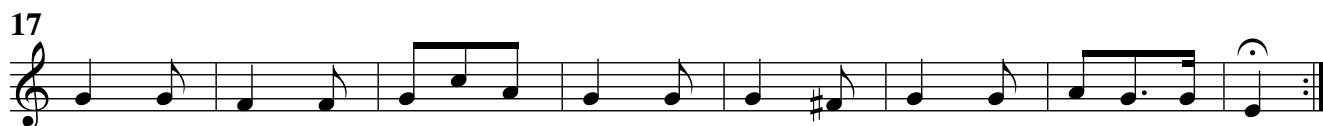
10



Gavotte en Rondeau



Passepied



Echo

9

18

26

36

44

f *p* *f* *p* *f* *p*

f *p* *f* *p*

f *p* *f* *p* *f* *p*

f *p*

Menuet

11

Trio

11

Menuet da capo