

Bassoon 1

A Spanish Christmas
(Four Carols)

Johnson

Vivace (♩=112)

35

First staff of music, measures 1-35. Bass clef, key signature of one flat (Bb), 6/8 time signature. The staff contains a series of eighth notes and rests, with a forte (f) dynamic marking at the beginning.

42

Second staff of music, measures 36-42. Bass clef, key signature of one flat (Bb), 6/8 time signature. The staff contains a series of eighth notes and rests.

51

Third staff of music, measures 43-51. Bass clef, key signature of one flat (Bb), 6/8 time signature. The staff contains a series of eighth notes and rests, with a forte (f) dynamic marking at the beginning.

67

Fourth staff of music, measures 52-67. Bass clef, key signature of one flat (Bb), 6/8 time signature. The staff contains a series of eighth notes and rests, with a sf dynamic marking at the end.

76

Fifth staff of music, measures 68-76. Bass clef, key signature of one flat (Bb), 6/8 time signature. The staff contains a series of eighth notes and rests, with a rit. marking at the end.

94

Moderato

Tempo rubato

Sixth staff of music, measures 77-94. Bass clef, key signature of two flats (Bb, Eb), 4/4 time signature. The staff contains a series of half notes and whole notes, with a mf dynamic marking at the beginning.

98

Seventh staff of music, measures 95-98. Bass clef, key signature of two flats (Bb, Eb), 4/4 time signature. The staff contains a series of half notes and whole notes.

102

Eighth staff of music, measures 99-102. Bass clef, key signature of two flats (Bb, Eb), 4/4 time signature. The staff contains a series of half notes and whole notes.

107

5 3

mf *mf*

118

f

123

f rit.

126 **Moderato**

6

f

137

3 3 *f*

144

f

148

6 *f*

157

5 *ff*

167

2 *molto rit.* **Più Lento** 2 *mf*

173 **Allegro con brio**

6

f

183

f

187

f

192

5

f

201

2

ff

208

f

213

fff

Bassoon 2

A Spanish Christmas
(Four Carols)

Johnson

Vivace (♩=112)
35

First staff of music (measures 1-35). Bass clef, key signature of two flats (B-flat and E-flat), 6/8 time signature. The staff contains a series of eighth notes and rests, with a forte (*f*) dynamic marking.

42

Second staff of music (measures 36-42). Bass clef, key signature of two flats, 6/8 time signature. The staff contains a series of eighth notes and rests, with a forte (*f*) dynamic marking.

51

Third staff of music (measures 43-51). Bass clef, key signature of two flats, 6/8 time signature. The staff contains a series of eighth notes and rests, with a forte (*f*) dynamic marking. Measure numbers 3, 3, and 6 are indicated above the staff.

67

Fourth staff of music (measures 52-67). Bass clef, key signature of two flats, 6/8 time signature. The staff contains a series of eighth notes and rests, with a forte (*f*) dynamic marking. Measure number 4 is indicated above the staff.

77

Fifth staff of music (measures 68-77). Bass clef, key signature of two flats, 6/8 time signature. The staff contains a series of eighth notes and rests, with a piano (*p*) dynamic marking. Measure numbers 10 and 3 are indicated above the staff. The staff ends with a double bar line and a key signature change to three flats (B-flat, E-flat, and A-flat).

94

Sixth staff of music (measures 78-94). Bass clef, key signature of three flats, 4/4 time signature. The staff contains a series of eighth notes and rests, with a mezzo-forte (*mf*) dynamic marking. The tempo changes from Vivace to Moderato and then to Tempo rubato. Measure number 7 is indicated above the staff.

105

Seventh staff of music (measures 95-105). Bass clef, key signature of three flats, 4/4 time signature. The staff contains a series of eighth notes and rests, with a mezzo-forte (*mf*) dynamic marking. Measure number 2 is indicated above the staff.

109

Eighth staff of music (measures 106-109). Bass clef, key signature of three flats, 4/4 time signature. The staff contains a series of eighth notes and rests, with a mezzo-forte (*mf*) dynamic marking. Measure numbers 3 and 3 are indicated above the staff.

117



121

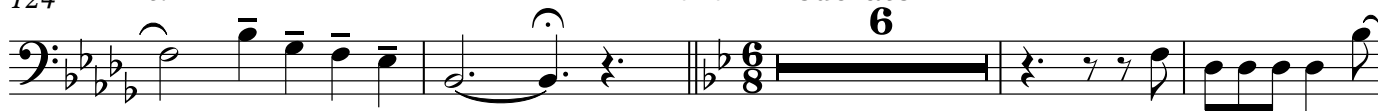


124

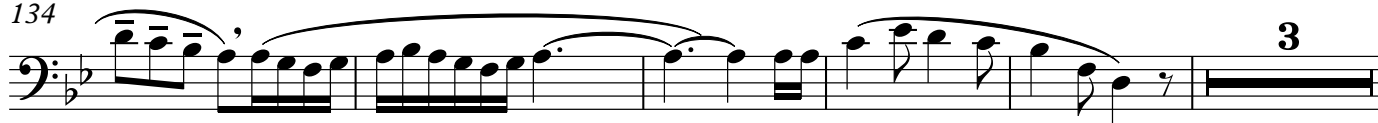
rit.

♩ = ♩ Moderato

6



134



142



148



157



167

molto rit.

Più Lento

Allegro con brio



