

Musanko

Musik anonymer KomponistInnen

Sinfonia

D-Dur

für 2 Violinen, Viola
und Basso continuo

(D-DI Mus.2-N-20,19 (Nr. 2))

Partitur und Stimmen

Edition Musanko

Edition MusanKo – Musik anonymer KomponistInnen

Ziel dieser Edition ist es, das in frei zugänglichen Quellen vorliegende, historische Notenmaterial anonymer KomponistInnen in eine für heutige MusikerInnen leichter lesbare Form zu überführen. Dazu werden z. B.

- Einzelstimmen spartiert,
- offensichtliche Fehler stillschweigend korrigiert,
- ausschließlich moderne Notenschlüssel verwendet,
- Artikulations- und Verzierungsangaben behutsam aus analogen Stellen übernommen,
- Generalbass-Bezifferungen ergänzt.

Sinfonia D-Dur für 2 Violinen, Viola und Basso continuo

herausgegeben von Harald Schäfer,

gesetzt mit Lilypond/Frescobaldi,

Edition MusanKo, 2020

Version: 13.12.2020

<http://www.musanko.de>

Quelle

D-Dl Mus.2-N-20,19 (Nr. 2) (aus dem Schrank II der Dresdener Hofkapelle)

Bibliographischer Nachweis: <https://opac.rism.info/search?id=212001714>

Satzbezeichnungen

Allegro / Largo / Presto

Anmerkungen

Für die hier vorliegende Sinfonia lassen sich anhand des Incipits des ersten Satzes im Répertoire Internationale des Sources Musicales (RISM) zwei weitere Quellen finden:

- Frauenfeld (Schweiz): ohne Titel, ohne Autor, Besetzung: 2 Vl, Vln, Bc, 2 Cor, 2 Cln, CH-FF UK 15^{5-6,8-11} (Ms.6530), <https://opac.rism.info/search?id=400213970>
- Stockholm: *[by later hand:] Sinfonia à 4 | Tartini*, Besetzung: 2 Vl, Vla, Bc, S-Skma Alströmer saml. 168:24, <https://opac.rism.info/search?id=190019232>

Das Incipit der letztgenannten Quelle weicht allerdings bereits ab Takt 3 melodisch deutlich von der in Dresden überlieferten Fassung ab. Die später hinzugefügte Komponistenangabe ist lt. RISM nicht gesichert.

Kontakt

Anregungen, Fragen, Kritik und Wünsche bitte jederzeit per Mail an schafha <at> web.de

Rechtlicher Hinweis

Alle mit der Editionsvorlage dieser Ausgabe verbundenen Rechte liegen beim Eigentümer der Quelle. Das in der Edition MusanKo bereitgestellte Notenmaterial steht unter der Creative-Commons-Lizenz CC BY-SA (<https://creativecommons.org>) in der jeweils gültigen Fassung.

13

tasto

16

6 4 #3 6 6 7 6 # 7 6 7

19

6 6 #5 6 # # 6

22

6 # # 6 # # # 6 #

25

6 6 6 6 6/4 5/3 #

28

[4] #4/2 6 6/4 5/3 6 #4/2 6 6/4 5/3 7 6 7 7 6 7

32

7 6 7 7 6 1/7 — 6 6 7 6 7 6 5 3/3 6

35

6 6 6 4 3

38

41

44

46

Presto

6

6/5 7

6 6 #

6 6/5 7/3 6 6/4 #3

19

6

This system contains measures 19 through 23. It features four staves: two treble staves and two bass staves. The key signature is D major (two sharps). The music consists of eighth and sixteenth notes, with rests. A measure rest is present in measure 20. A finger number '6' is written below the final measure (23).

24

6 6 5 7 # 6

This system contains measures 24 through 28. It features four staves. The music continues with eighth and sixteenth notes. A measure rest is present in measure 25. Finger numbers '6', '6', '5', '7', '#', and '6' are written below the staves in measures 24, 25, 26, 27, 28, and 29 respectively.

29

6 — 6 6 7 6 6 5 3

This system contains measures 29 through 33. It features four staves. The music includes trills marked with 'tr'. Finger numbers '6', '—', '6', '6', '7', '6', '6', and '5 3' are written below the staves in measures 29, 30, 31, 32, 33, 34, 35, and 36 respectively.

34

6 6 4 6 5 7 6 6 4 5 3

This system contains measures 34 through 38. It features four staves. The music includes trills marked with 'tr'. Finger numbers '6', '6', '4', '6', '5', '7', '6', '6', '4', and '5 3' are written below the staves in measures 34, 35, 36, 37, 38, 39, 40, 41, 42, and 43 respectively.

Sinfonia D-Dur

für 2 Violinen, Viola und Basso continuo

Violine 1

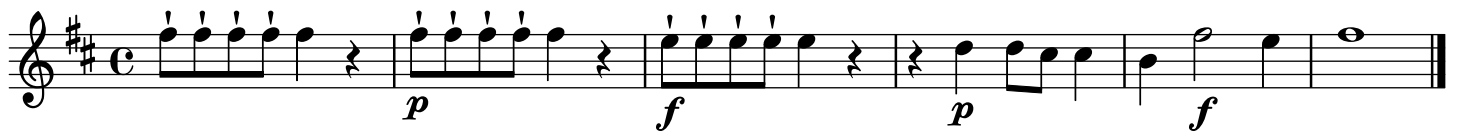
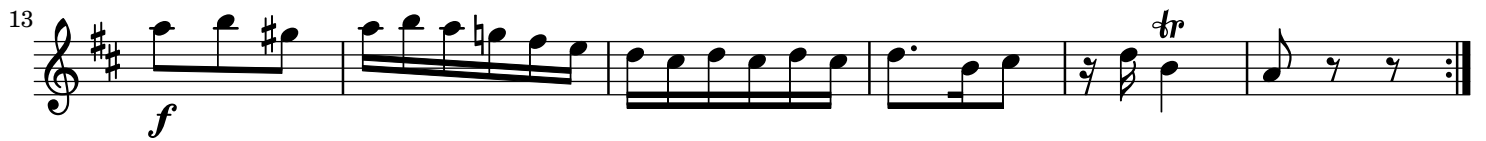
Anonymus, D-Dl Mus. 2-N-20,19 (Nr. 2)

Allegro

The musical score for Violine 1 is written in D major (two sharps) and 2/4 time. It consists of 10 staves of music, with measure numbers 4, 7, 9, 11, 13, 16, 19, 21, 23, and 26 marked at the beginning of their respective staves. The piece begins with a treble clef, a key signature of two sharps, and a common time signature. The first staff contains measures 1 through 3. The second staff (measures 4-6) features a series of eighth and sixteenth notes, including a triplet of eighth notes. The third staff (measures 7-8) continues with eighth notes. The fourth staff (measures 9-10) features a series of eighth notes with sharp signs above them. The fifth staff (measures 11-12) continues with eighth notes. The sixth staff (measures 13-15) includes a triplet of eighth notes and a sixteenth-note triplet. The seventh staff (measures 16-18) features eighth notes and a quarter note. The eighth staff (measures 19-20) continues with eighth notes. The ninth staff (measures 21-22) features eighth notes. The tenth staff (measures 23-24) continues with eighth notes. The eleventh staff (measures 25-26) features a triplet of eighth notes and a quarter note. The piece ends with a final measure on the eleventh staff.

Violine 1

Measures 30 to 56 of the musical score for Violine 1. The score is written in treble clef with a key signature of two sharps (F# and C#). The music features a variety of rhythmic patterns, including eighth and sixteenth notes, and rests. There are several instances of beamed sixteenth notes and eighth notes, suggesting a fast tempo. The score is divided into systems, with measures 30, 33, 36, 39, 42, 44, 46, 48, 51, 53, and 56 marked at the beginning of their respective lines. The notation includes various musical symbols such as slurs, ties, and dynamic markings (e.g., *f* for fortissimo).

Largo**Presto**

Sinfonia D-Dur

für 2 Violinen, Viola und Basso continuo

Violine 2

Anonymus, D-Dl Mus. 2-N-20,19 (Nr. 2)

Allegro

5

10

15

19

24

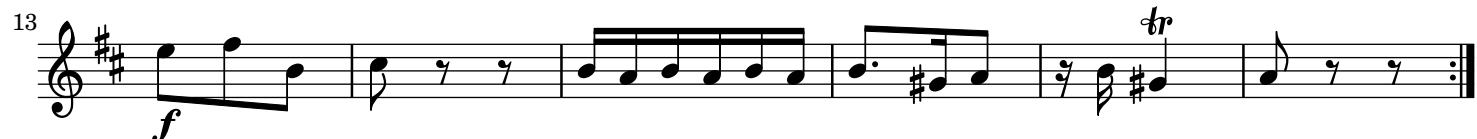
28

32

36

40

45

**Largo****Presto**

Sinfonia D-Dur

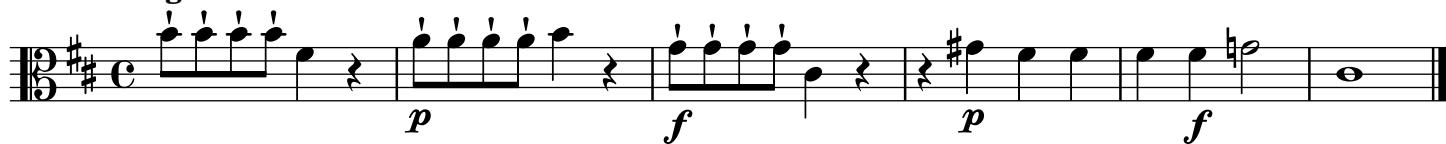
für 2 Violinen, Viola und Basso continuo

Viola

Anonymus, D-Dl Mus. 2-N-20,19 (Nr. 2)

Allegro

The musical score for the Viola part is written in D major (two sharps) and 3/8 time. It consists of 10 staves of music, with measure numbers 6, 12, 17, 22, 27, 33, 38, 43, 49, and 54 indicated at the beginning of their respective staves. The notation includes various rhythmic values such as eighth, sixteenth, and thirty-second notes, as well as rests and accidentals (sharps and naturals). The piece concludes with a double bar line at the end of the final staff.

Largo**Presto**

10



19



29



Sinfonia D-Dur

für 2 Violinen, Viola und Basso continuo

Basso continuo

Anonymus, D-Dl Mus. 2-N-20,19 (Nr. 2)

Allegro

6 4 3 7 6 6 7 6 — 6 7 6 6

6 7 6 # # — # — # — #

— 6 4 #3 — *tasto* — *tasto* —

6 4 #3 6 6 7 6 # 7 6 7 # # 6 6 7 6 #

— 6 # # — 6 # # — 6 # # 6 6

6 6 6 5 # [h] #4 6 6 5 6 #4 6 6 5 7 6 7 7 6 7

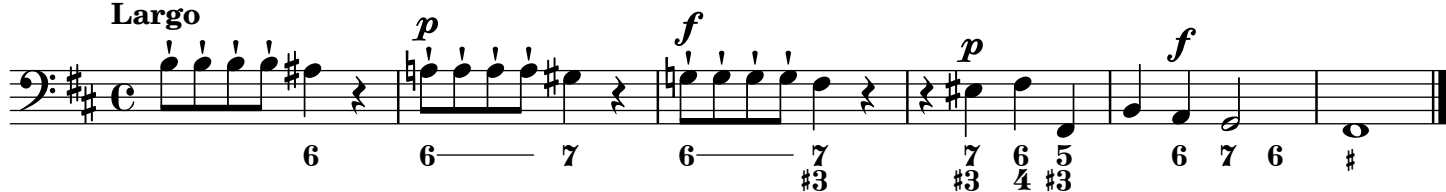
7 6 7 7 6 7 — 6 6 7 6 7 6 6 6 6 4 3

6 6 7 6 — 6 7 6 6 7 6 #

— # — # — 6 4 #3 — *tasto* —

tasto — 7 4 2 6 — 6 — 6 # 6 # *tasto*

tasto — 7 6 7 4 2 6 6 *tasto* —

Largo**Presto**

6 6 7 6 #3 7 6 5 #3 6 7 6 #

10 6 6 # 6 6 7 6 6 5 #3 6 6 5 #3

19 6 6 6 7 7 # 6 6 7 6 6 5 #3 6 6 7 6 6 5 #3

29 6 - 6 6 7 6 6 5 6 6 6 7 6 6 5 6 6 5