

Soler Flair

Clarinet 1 in B \flat

1.

Soler/Johnson

Allegro

f

8

p

26

5

14

tr

p

51

11

3

72

tr.

tr.

3

tr.

tr.

p

p

85

5

2

2

5

p

f

104

4

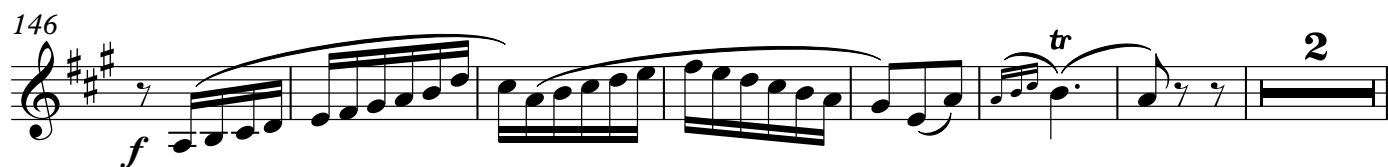
120

128

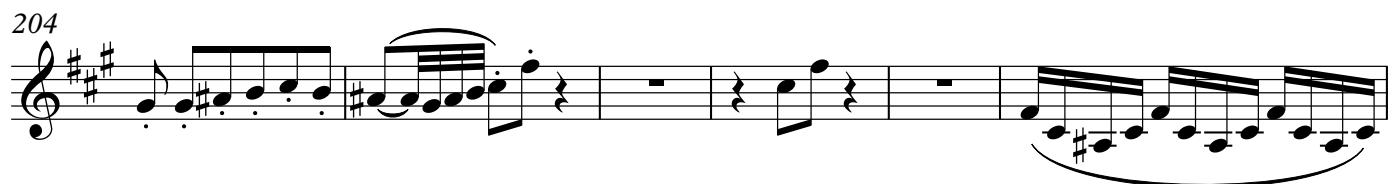
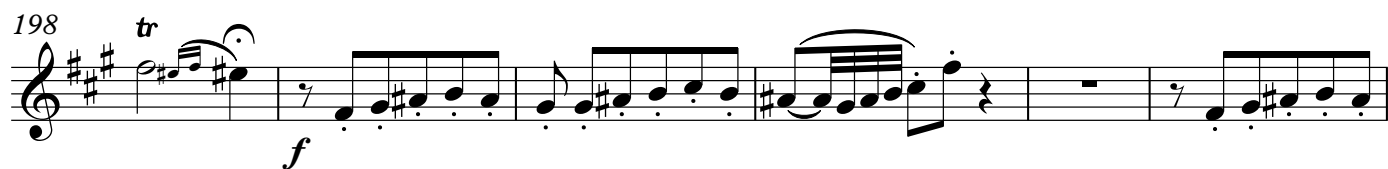
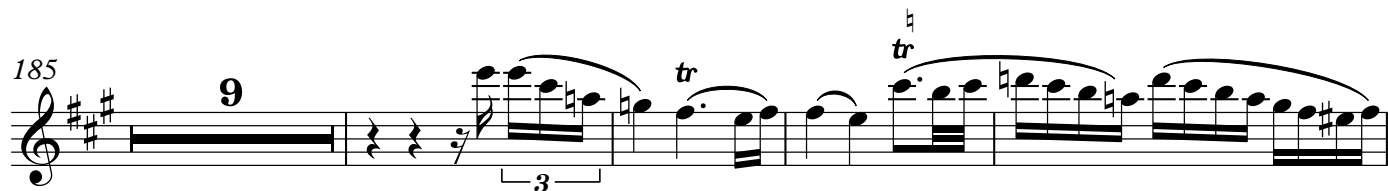
14

Clarinet 1 in B \flat

Clarinet 1 in B \flat



2.



Measures 1-12 of the musical score for Clarinet 1 in B \flat . The score is written in treble clef with a key signature of one flat (B \flat). Measure 1 contains a whole rest. Measure 2 has a triplet of eighth notes (G \flat , F \flat , E \flat) starting on a whole rest, followed by a half note G \flat . Measure 3 is a whole rest. Measure 4 has a half note G \flat and a half note F \flat . Measure 5 has a half note E \flat and a half note D \flat . Measure 6 has a half note C \flat and a half note B \flat . Measure 7 has a half note A \flat and a half note G \flat . Measure 8 has a half note F \flat and a half note E \flat . Measure 9 has a half note D \flat and a half note C \flat . Measure 10 has a half note B \flat and a half note A \flat . Measure 11 has a half note G \flat and a half note F \flat . Measure 12 has a half note E \flat and a half note D \flat . Dynamics include *p* (piano) in measure 4 and *f* (forte) in measure 6. Trills (*tr*) are marked in measures 10 and 11. A 3-measure rest is indicated in measure 2. A 4-measure rest is indicated in measure 3. A 6-measure rest is indicated in measure 5. A 7-measure rest is indicated in measure 11.

3.

- Allegretto (♩=82)

Measures 13-19 of the musical score for Clarinet 1 in B \flat . The score is written in treble clef with a key signature of three sharps (F \sharp , C \sharp , G \sharp). Measure 13 has a half note F \sharp and a half note E \sharp . Measure 14 has a half note D \sharp and a half note C \sharp . Measure 15 has a half note B \sharp and a half note A \sharp . Measure 16 has a half note G \sharp and a half note F \sharp . Measure 17 has a half note E \sharp and a half note D \sharp . Measure 18 has a half note C \sharp and a half note B \sharp . Measure 19 has a half note A \sharp and a half note G \sharp . Dynamics include *f* (forte) in measure 13. A 3-measure rest is indicated in measure 14. A 4-measure rest is indicated in measure 15. A 6-measure rest is indicated in measure 17. A 7-measure rest is indicated in measure 18. A 8-measure rest is indicated in measure 19.

Clarinet 1 in B \flat

Clarinet 1 in B \flat

Measures 1-10 of the Clarinet 1 part in B \flat . The key signature is three sharps (F#, C#, G#). The notation includes various rhythmic patterns, including eighth and sixteenth notes, and rests. Measure numbers 2, 9, and 10 are indicated above the staff.

4.

Allegro non tanto ($\text{♩} = 108$)

Measures 11-14 of the Clarinet 1 part in B \flat . The key signature is three sharps (F#, C#, G#). The notation includes various rhythmic patterns, including eighth and sixteenth notes, and rests. Measure numbers 4 and 5 are indicated above the staff. The piece concludes with a double bar line and repeat dots.

6

5

7

p

13

p

5

f

tr

6

5

f

11

Musical score for Clarinet 1 in B \flat , page 6. The score consists of four staves of music in treble clef. The first staff contains measures 1-6, with a double bar line and a '2' indicating a second ending. The second staff contains measures 7-12, with a double bar line and a '3' indicating a third ending. The third staff contains measures 13-18. The fourth staff contains measures 19-24, ending with a repeat sign. The music features various note values, rests, and articulations.

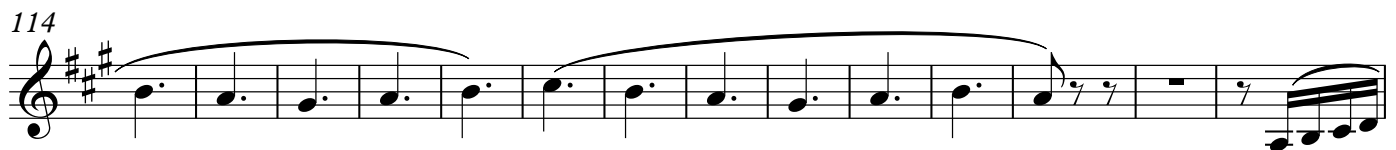
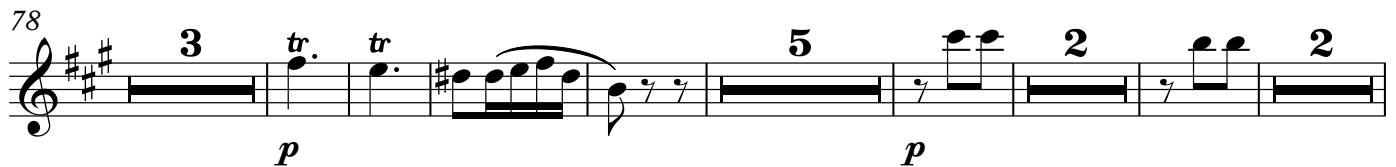
Soler Flair

Clarinet 2 in B \flat

1.

Soler/Johnson

Allegro

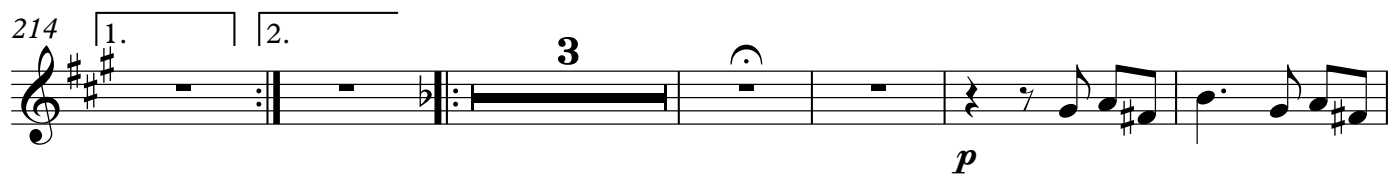
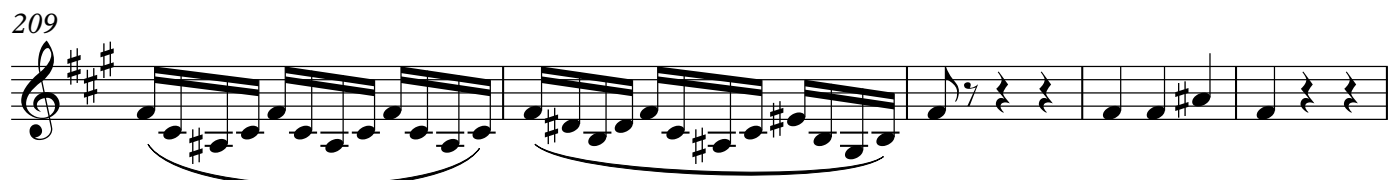
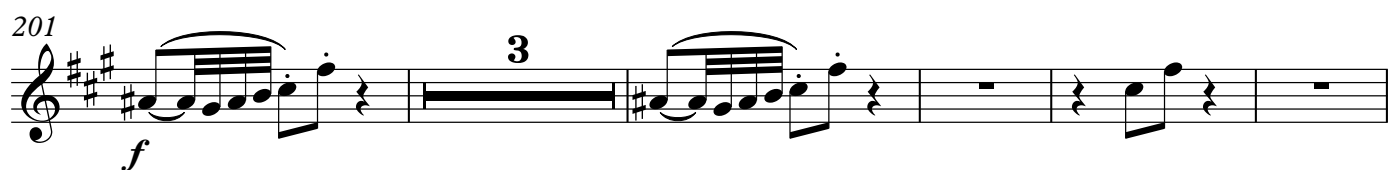
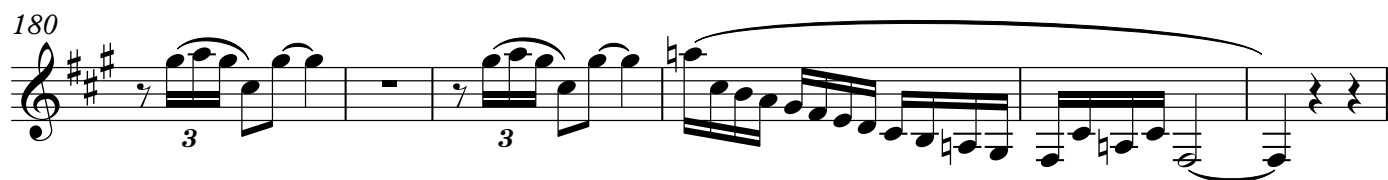


Clarinet 2 in B \flat

Clarinet 2 in B \flat



2.



Measures 1-10 of the musical score. The key signature is three sharps (F#, C#, G#). The first staff contains measures 1-4, featuring a forte (*f*) dynamic and fingerings 2 and 3. The second staff contains measures 5-8, showing a continuous eighth-note pattern. The third staff contains measures 9-10, including first and second endings and a repeat sign.

– Allegretto (♩=82)

Measures 11-20 of the musical score. The key signature changes to two sharps (F#, C#). The third staff (measures 11-12) features a forte (*f*) dynamic. The fourth staff (measures 13-14) includes a measure rest of 8. The fifth staff (measures 15-16) includes measure rests of 5 and 2. The sixth staff (measures 17-18) includes measure rests of 2 and 2. The seventh staff (measures 19-20) includes measure rests of 8 and 10. The eighth staff (measures 21-22) includes a measure rest of 5.

Clarinet 2 in B \flat

Clarinet 2 in B \flat

Measures 1-12 of the musical score for Clarinet 2 in B \flat . The key signature is one sharp (F#). The notation includes various rhythmic patterns, including eighth and sixteenth notes, and rests. Measure numbers 11 and 12 are indicated above the staff.

4.

Allegro non tanto ($\text{♩} = 108$)

Measures 13-27 of the musical score for Clarinet 2 in B \flat . The key signature is one sharp (F#). The notation includes various rhythmic patterns, including eighth and sixteenth notes, and rests. Measure numbers 4, 5, 6, 7, 13, and 15 are indicated above the staff. Dynamics include *f* (forte) and *p* (piano).

6

p

f

9

4

4

3