

# Piano Sonata No. 10 in C Major

Cello

1. Allegro moderato

Wolfgang Amadeus Mozart

Joshua Choe

Allegro moderato

6 *f* *mp*

13 *mp cresc.* *f* *f* *p*

21 *mp* *p*

27

31 *f* *p* *mf* *p*

41 *mf* *mp* *mf*

49 *mp* *f* *p* *f*

57 *p* *p*

69 **2**

76 **14** *f*

96 **2** *mp* **3** *mp* *resc.* *f* *> f >*

106 *p*

111 *mp > p* **3** **3** **3** **3** **3** **3** **3** **3**

115 **3** **3** **3** **3** **3** **3** **3** **3** *f* *p*

120 **2** *mf* *p* **2**

129 *mf* **2** *mp* *mf*

136

2

*mp* *f* *p* *f*

Detailed description: This musical staff contains measures 136 through 143. Measure 136 begins with a sixteenth-note triplet. Measures 137 and 138 contain a whole rest, with a finger number '2' written above the staff. Measure 139 starts with a half note G3, followed by a quarter note A3, and a quarter rest. Measure 140 features a half note G3, a quarter note A3, and a quarter rest. Measure 141 has a half note G3, a quarter note A3, and a quarter rest. Measure 142 contains a half note G3, a quarter note A3, and a quarter rest. Measure 143 begins with a sixteenth-note triplet. Dynamic markings *mp*, *f*, *p*, and *f* are placed below the staff at measures 139, 140, 141, and 142 respectively.

144

5

*p* *p*

Detailed description: This musical staff contains measures 144 and 145. Measure 144 starts with a half note G3, followed by a quarter note A3, and a quarter rest. Measure 145 features a half note G3, a quarter note A3, and a quarter rest. A finger number '5' is written above the staff in measure 145. Dynamic markings *p* and *p* are placed below the staff at measures 144 and 145 respectively. The staff ends with a double bar line.

# Piano Sonata No. 10 in C Major

Cello

## 2. Andante cantabile

Wolfgang Amadeus Mozart

Joshua Choe

### Andante cantabile

*p dolce* *mp* *p* *mf* *p*

8 *p* *p* *f*

15 *p dolce* *mp* *p* *f*

21 *pp*

25 *cresc.* *f* *p* *mf* *p*

33 *cresc.* *f* *pp*

38 *p dolce* *mp*

43 *p* *mf* *p* *p*

51



59



63



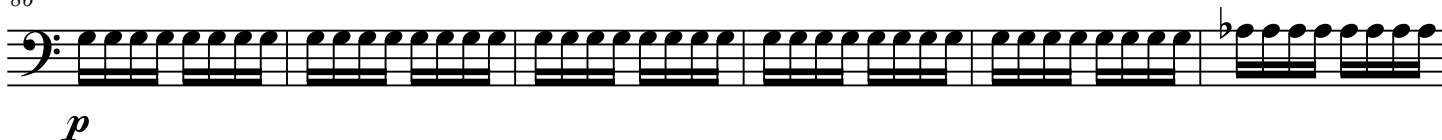
# Cello

## Wolfgang Amadeus Mozart

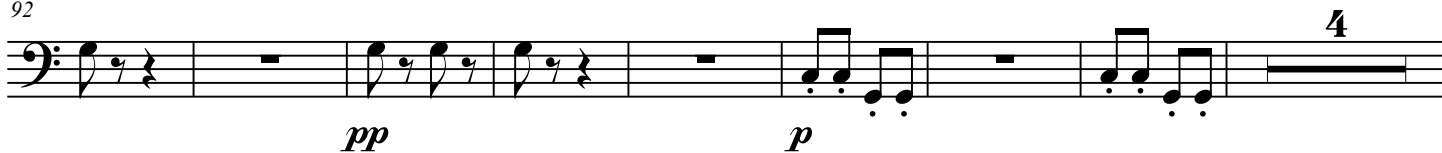
## Allegretto

Musical score for "The Great Wall" by Joshua Choe. The score is written for a single instrument, likely a cello or double bass, in 2/4 time. The key signature is one flat (B-flat). The score is divided into measures, with measure numbers 11, 18, 33, 44, 52, 61, and 67 indicated. Dynamics include *p* (piano), *f* (forte), *ff* (fortissimo), *mf* (mezzo-forte), and *cresc.* (crescendo). Articulations include accents, slurs, and breath marks. The score features a variety of rhythmic patterns, including eighth notes, sixteenth notes, and triplets.

86



92



104



109



125



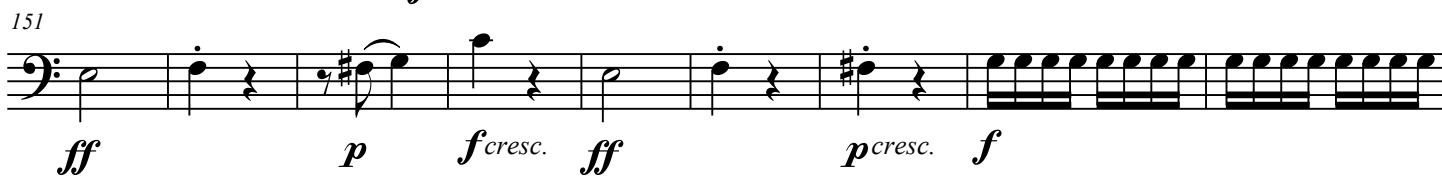
138



143



151



160



*p*

166



*f*