

Alma de la Tierra

Fernando Giunta

1)Edem-Atuel y sus Amigos-Fiesta en la Aldea

Tranquilo $\text{♩} = 76$

2

7 *pp*

12

17 *mf* *rit.*

21 *sfz* *a tempo* *p*

26 *pp*

31

35 *p*

38 *mf* *arco* *mf*

41

46 *p* *rit.*

50

51 **A** a tempo
arco
p

54
mp

58
mf

62 rit..... a tempo ♩ = 116
pizz.
mf

66
p *mf*

69
p *mf* *p*

72
p *mf* *mf*

75
p *p* *p* *mf*

78
p *p* *p*

81
p *p* **2**

85 arco
p *p*

88
p *mf*

91
mf

94
B

96 a tempo
fp

99

103
fp

106 arco
mf

109
mf

112

Detailed description: This musical score for Viola spans measures 85 to 112. It is written in 12/8 time. Measures 85-87 are marked 'arco' and 'p'. Measures 88-90 are marked 'p' and 'mf'. Measures 91-93 are marked 'mf'. Measure 94 has a box labeled 'B'. Measures 95-97 are marked 'a tempo' and 'fp'. Measures 98-100 are marked 'fp'. Measures 101-103 are marked 'fp'. Measures 104-106 are marked 'arco' and 'mf'. Measures 107-109 are marked 'mf'. Measure 110 is marked 'mf'. Measures 111-112 are marked 'mf'. The score includes various articulations such as accents, slurs, and dynamic markings.

114 *sul pont.*

f

116

118

120 *col legno*

p

122

124

126

128

130

132 *arco*

f

135 pizz. arco *tr* pizz. arco *tr* pizz. **2** rit..

mf *pp*

.....a tempo

141 pizz. arco *tr* pizz. arco *tr* pizz. **5**

149 arco

150 **C**

152 **11** col legno *f* *p* rit.....a tempo

165 nat. arco *tr* pizz. *p* *p*

168 arco *tr* pizz. a tempo

171 pizz. *f*

D a tempo
col legno

173 *p*

176

179 **4**

186 **3** arco **E** Allegro $\text{♩} = 86$ **15**
f *ff*

Golpear tastiera
col legno

206 *mf*

210

214

218 *p*

222

226

230

234

7

236



240



244



248



252



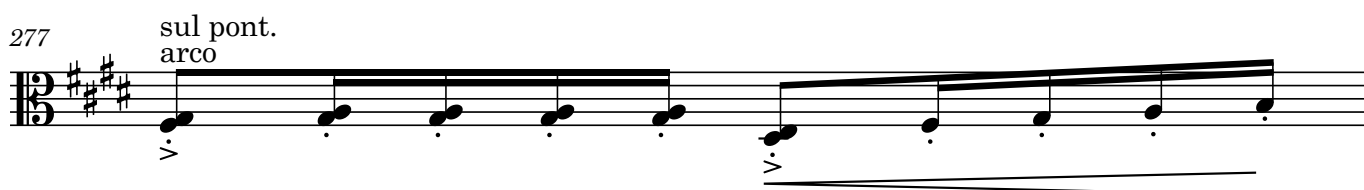
256



260



277



278 *nat. spicc.*
mf

281

284 *p* *p*

287

290 *sul pont.*

293

296 *f*

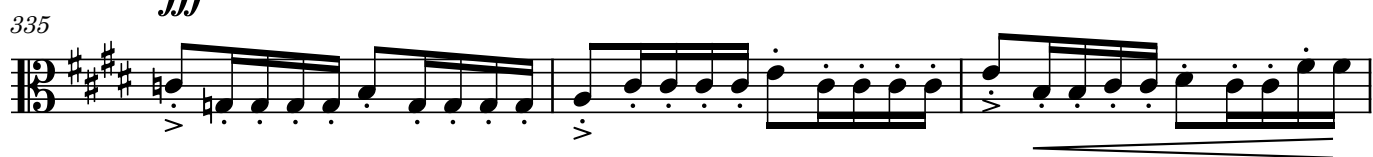
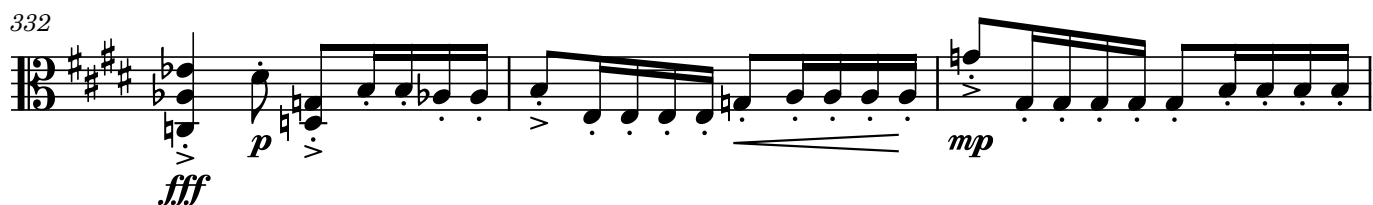
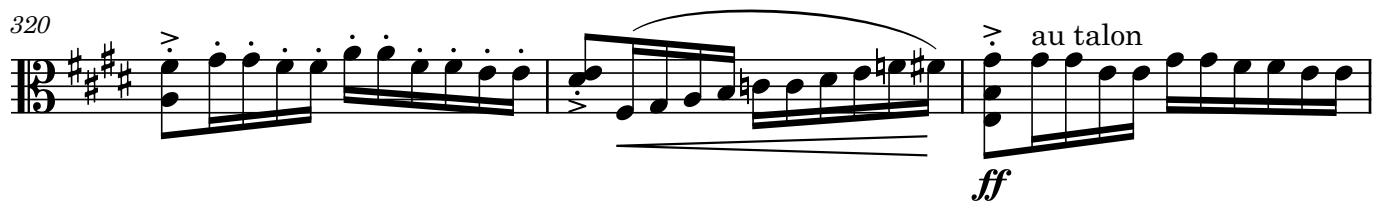
299

302 *nat.* *sul pont.*

305 *fp* *mf*

308

311 **F** *f*



Allegretto ♩ = 82

Tamb.

rit. ♩ = 30



372 **2**

mp

377

380

383

388 *mp*

393

398 *mf*

404 **5** arco *p*

413

417 *f* *p*

Detailed description of the musical score: The score is for a Viola part, spanning measures 372 to 417. The time signature is 12/8, and the key signature has one sharp (F#). The notation includes eighth and sixteenth notes, often beamed together in groups. Slurs are used to group phrases of notes. Accents (>) are placed over specific notes. Dynamic markings include *mp* (mezzo-piano), *mf* (mezzo-forte), *p* (piano), and *f* (forte). Articulation marks, represented by 'V' symbols, are placed above certain notes. In measure 404, there is a five-measure rest indicated by a horizontal line with the number '5' above it, followed by the instruction 'arco' and a piano (*p*) dynamic. The score concludes with a series of sixteenth-note patterns in the final measures.

421

mf

425 **H**

p *mp*

429

mf

433

f

436

f

439

f

442

f

445 **I** ♩ = 82

f

449 rit. ♩ = 76

ff

Viola

Alma de la Tierra

Fernando Giunta

II-La Sequía

♩ = 66

pp

4

p

8

A

f

13

SOLO 1

p

16

18

p

21

p

24

tutii

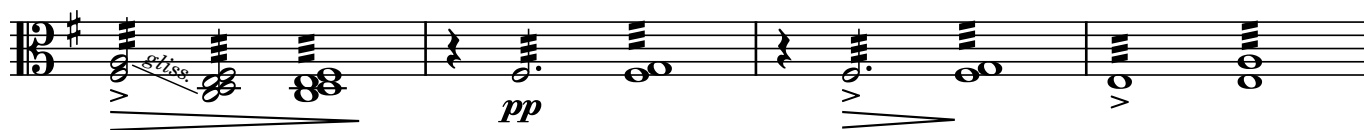
pp

fp

gliss.

B

28

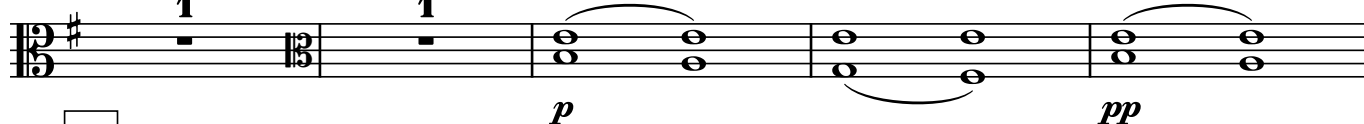


32



ATRAS DEL PUENTE

37



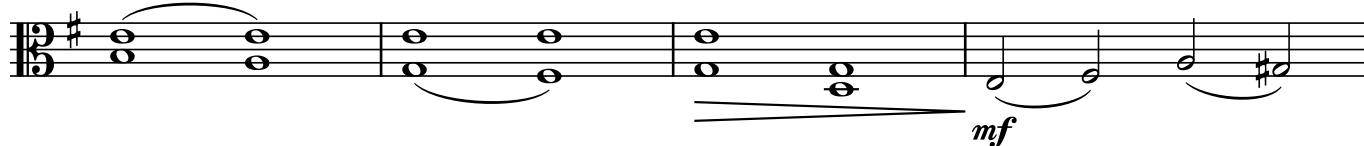
42



47



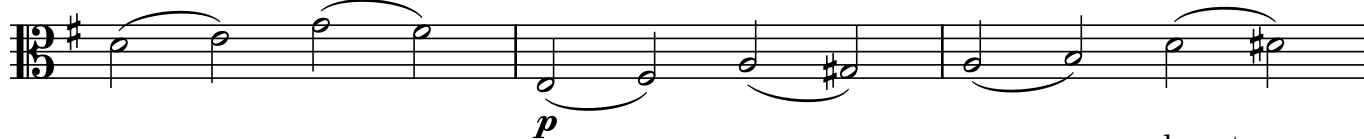
52



56



59



62

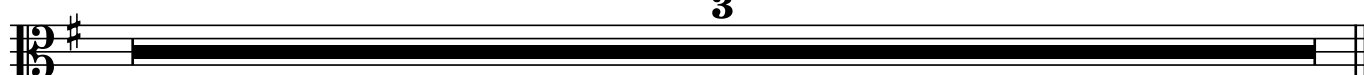


sul pont.

66



70



Viola

Alma de la Tierra

Fernando Giunta

3-Guerra por las Tierras

$\text{♩} = 126$

ff *ff* *f*

au talon

6

1. 2. rit.....

gliss.

12

A a tempo

Tambór

1

18

21

sul pont.

fp

44

B

55

C

7

pizz.

f

69

pizz.

76

arco

f

80 sul pont.
au talon
chicharra

82

85 col legno

89

D

92 sul pont.
arco
au talon

95

98 pizz.

102 arco

106

E

11

121

f

mf

125

f

130

sul pont.
au talon

f

134

F

col legno

fp *p* *mf*

137

mf

140

col legno

mf

143

mf

146

nat.
au talon

G

f *mf*

150 *sul pont.*

155 *arco* *ff*

160 *sul pont.*
col legno *f*

163 *(sul pont.)* *arco* *fp* *mp* *mf*

169 *tr* *f* *rit.*

177 *H* *Allegro giusto* $\text{♩} = 120$ *col legno* *fff* *p* *2*

183 *2* *24* *p*

212 *Xyl. 8va* *pizz.*

216 *pizz.*

219



222



226



230



233



236



239



242



245



248



251

254

257

260

264

268

272

279

284

288

292

296

J

pizz.

mf

f

f *mf*

K

3

col legno

p

p

ff

nat.

299 col legno

305 *p*

311

317 *M*^{nat.} *f*

323 pizz. Cerca del puente

329 *p*

335

341 *N* *mp*

347 spicc. arco *mf*

352

355 gliss.

Detailed description of the musical score: The score is for a Viola part, measures 299 to 355. The key signature has one sharp (F#) and the time signature is 3/4. The notation is on a single staff. Measures 299-310: The music consists of a series of eighth notes, each with a 'v' (col legno) marking. The dynamics start at mezzo-forte and decrescendo to piano by measure 305. Measures 311-322: Continuation of the eighth-note 'col legno' pattern. Measure 323: The pattern changes to a single note with a 'pizz.' (pizzicato) marking and a glissando line. Measures 324-334: Continuation of the eighth-note 'col legno' pattern with a decrescendo to piano. Measures 335-340: Continuation of the eighth-note 'col legno' pattern. Measure 341: A box containing the letter 'N' is placed above the staff. The dynamics are mezzo-piano. Measures 342-346: Continuation of the eighth-note 'col legno' pattern. Measures 347-351: The music changes to a series of eighth notes with 'spicc. arco' (spiccato arco) markings. The dynamics are mezzo-forte. Measures 352-354: Continuation of the eighth-note 'spiccato arco' pattern. Measure 355: The music ends with a glissando line and a decrescendo.

358 **4** **O** au talon Solo
mf

365 0

369 0 *f* 4 3 2

373 0

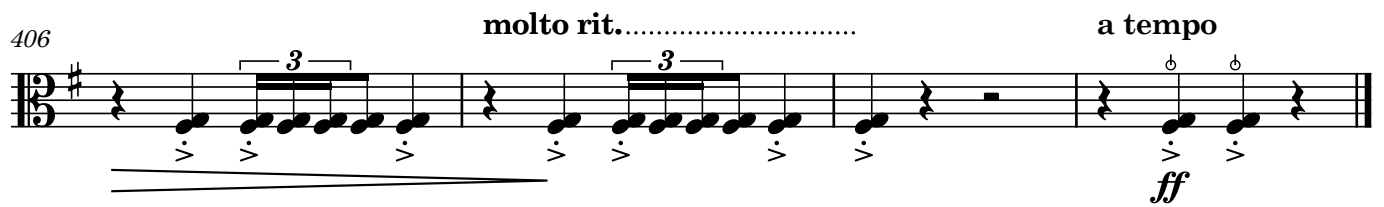
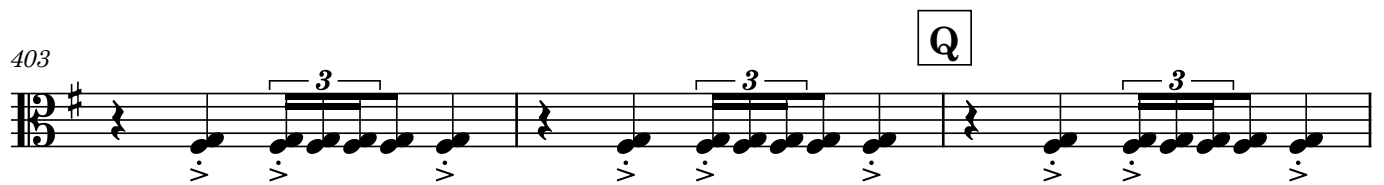
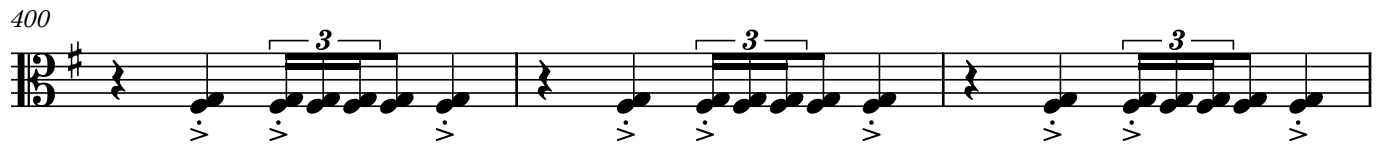
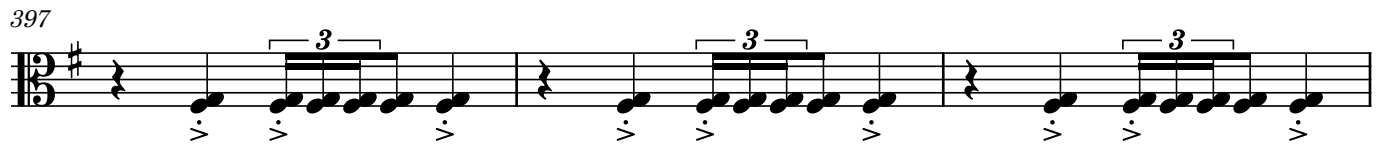
376 rit.....

379 *ff* *f*

384 molto rit.....

390 **Lento** $\text{♩} = 52$ **Largo** $\text{♩} = 56$ sul pont. col legno **P**
fff *mf* 3 3 3

394 3 3 3



Viola

4-Alma de la Tierra

Fernando Giunta

4-Atuel y clara uyen a la momtaña-Sueña-El milagro

Andante ♩ = 54
con sord.

p

6 5 con sord. Solo
mf

14 *p*

18 rit..... a tempo sul pont.
p

22

24 *pp*

26 *pp*

A

29 rit..... ♩ = 92 2 2 ♩ = 100

37 rit.....a tempo 4 rit..... 1 Andante $\text{♩} = 58$
sul pont.
p

47 rit..... a tempo 5 rit..... a tempo 4

60 rit..... 1 senza sord.
nat. 2 rit..... 1 arco $\text{♩} = 62$
p

67 accel..... 3 1

75 $\text{♩} = 110$ arco
mf

77 *p* C

79 $\text{♩} = 110$ pizz. 2

84 accel..... D $\text{♩} = 120$
Violín sul pont.
f

87 *mf*

89 *p*
col legno

p

91

93

95

97 *pizz.*
mf

100 *col legno*
p

102 *arco* *rit.....*
f

105 *pizz.* *arco* *pizz.* *arco* *pizz.* *a tempo* **1**

110 *rit.....a tempo* **1** *a tempo* **4** *col legno*
mp *mf*

119 **F** arco

mf

120

122 **3** **8**

f *f*

134 punta d'arco rit.....

p a tempo *p* arco *p* pizz. **G** a tempo *p*

137 *p* *p* *p* *p* *p* *p*

141 pizz. a tempo pizz.

144 *f*

147 col legno

150 **2**

154 **1** *f* *f*

157 **2**

159 *rit.*..... *arco* $\text{♩} = 80$ **H** $\text{♩} = 66$ 1

162 *p* *mf*

164 *fz* *sul pont.*

169 *rit.*..... **I** *Adagietto* $\text{♩} = 69$ *sul pont.* *con sord.* *fp*

179 *p*

190 *rit.*..... *a tempo* *mp*

197 *mf* *fz* *f*

202 *rit.*.....

209 **J** *a tempo* *Riten.* $\text{♩} = 60$ 9 1 *pizz.* *mf*

221 **K** Andante $\text{♩} = 90$ sul pont.
arco

228 *pp*

234 *p* a tempo *p*

241 rit. **L** $\text{♩} = 76$

247 *p*

252 *mp*

255 *p*

258 *mp* **M**

261 *mf*

264 *f* **N**

267 rit. $\text{♩} = 84$ *ff* *mf* molto rit. *gliss.*

271 *f* a tempo *fff*