

Baritone

# 1942 Vocalise for Baritone and Cello

Stephen W. Beatty (1938)

♩ = 90



AA



29 *f* *mf* Baritone *pp* *p* *mf* *p* *ppp* *f* *mp*

34 *f* *mp* *f* *mf* *f* *mp* *mf*

37 *mp* *mf* *mp* *p* *mp* *mf* *f*

40 *mp* *mf* *f* *mp* *mf* *f*

44 *mp* *f* *mf* *mp* *pp* *f*

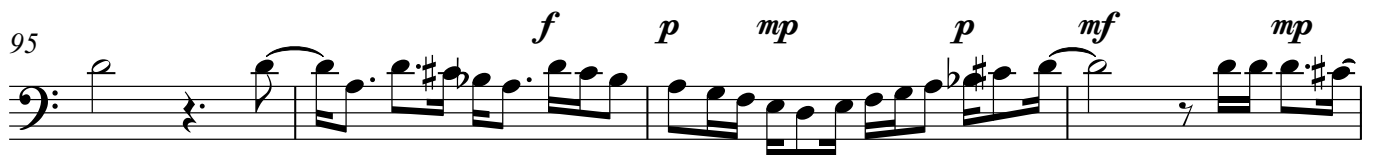
47 *mf* *f* *mp* *pp* *p*

51 *mp* *mf* *mp* *mf* *f* *mf*

55 *pp* *p* *mf* *mp* *mf*

60 *mp* *mf* *mp* *mf* *p* *mf*

64 *f* *p* *mp* *mf* *f* *p*



## Baritone

106 *mf* *mp* *f* *mf* *f* *mf*

111 *mp* *mf* *mp* *f* *mf*

114 *f* *mp* *mf* *f* *mf* *mp* *mf*

119 *p* *mp* *mf* *mp* *mf* *mp* *mf* *f* *mp* *mf*

123 *mp* *f* *mp* *mf* *f* *mf* *mp*

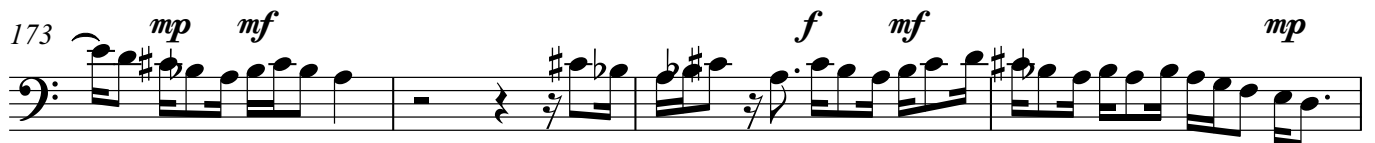
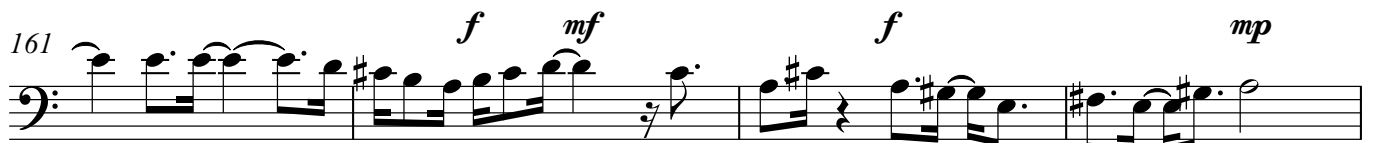
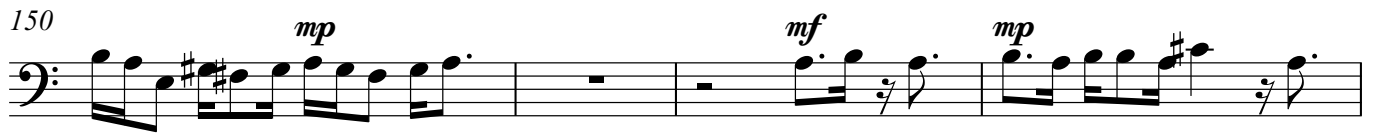
127 *mf* *mp* *mf*

131 *mp* *mf* *mp* *mf* *p* *mp* *mf*

135 *mp* *f* *mp* *p* *f* *mp* *mf*

139 *f* *mf* *mp* *pp*

143 *mf* *f* *pp* *mf* *f* *mp* *f* *mf* *mp*



Violoncello

# 1942 Vocalise for Baritone and Cello

Stephen W. Beatty (1938)

♩ = 90

6

10

14

18

22

*mf* *f* *fff* *mf*

*f* *mf*

*f* *mf* *f*

*mf* *f* *mf*

*mp* *mf* *mp* *f* *mf*

*mp* *f*

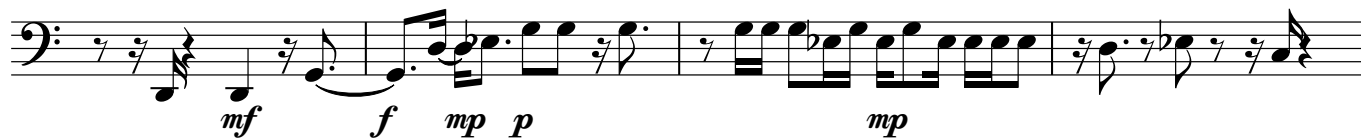
27



31



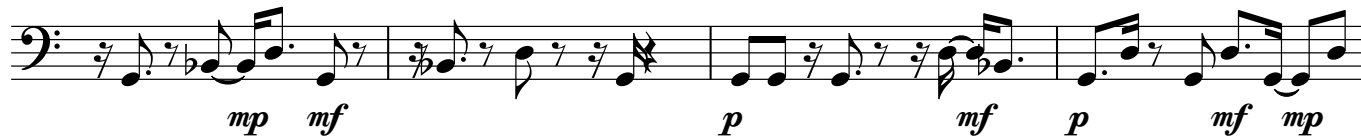
36



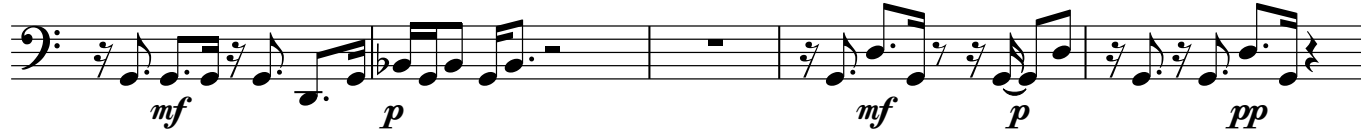
40



44



48



53



57



61



65



69



73



77



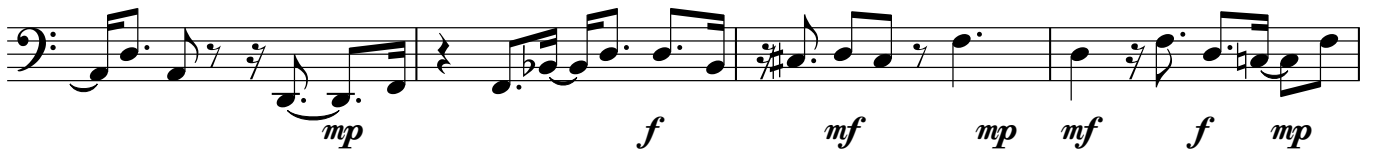
81



85



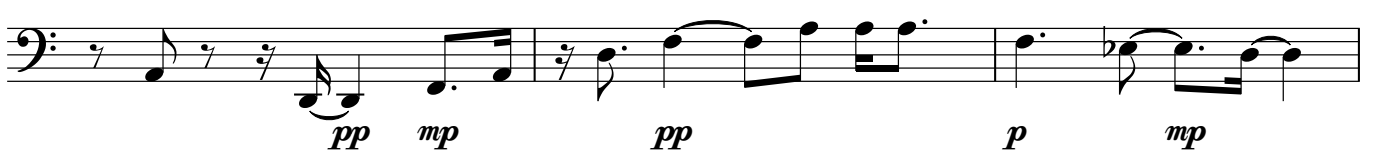
89



93



97



100





104



107



111



115



119



123



127



131



135



139



143



147



151



155



159



163



167



171



175



179



182

A musical score for Violoncello, measure 182. The staff is a single five-line staff with a bass clef. The measure is divided into two parts by a bar line. The first part contains a quarter note G2, a quarter note F2, and a quarter rest. The second part contains a half note G2, a quarter note F2, a quarter note E2, a quarter note D2, a quarter note C2, and a quarter rest. The measure ends with a double bar line. The dynamic marking *pp* is placed below the first note of the second part.