

Allein zu dir, Herr Jesu Christ, BWV 33

3. Aria 'Wie furchtsam wankten meine Schritte'

Johann Sebastian Bach

Transcription: Nuno R. Rodrigues

p

Ped. simile

3

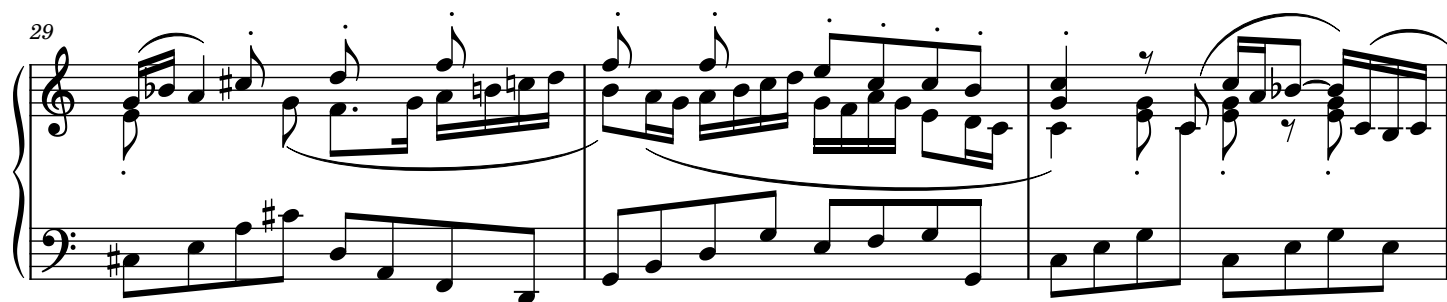
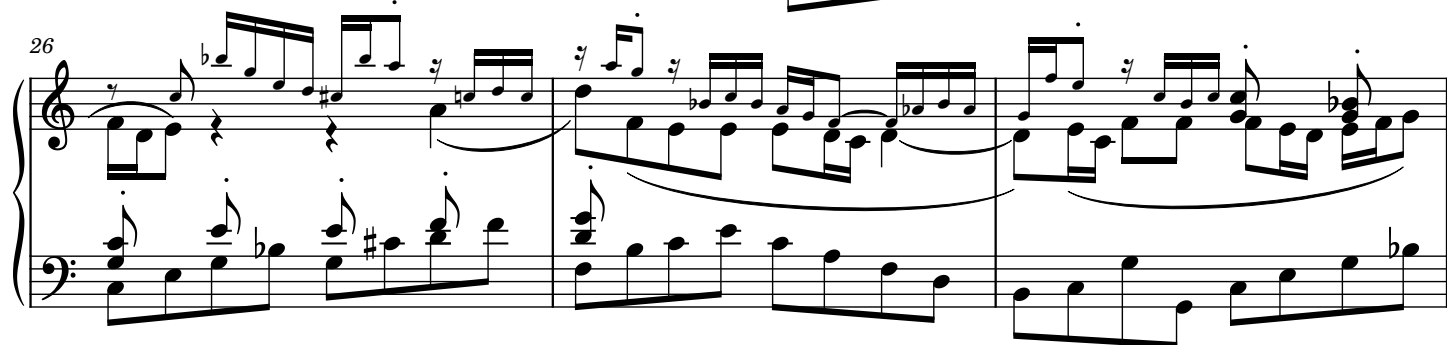
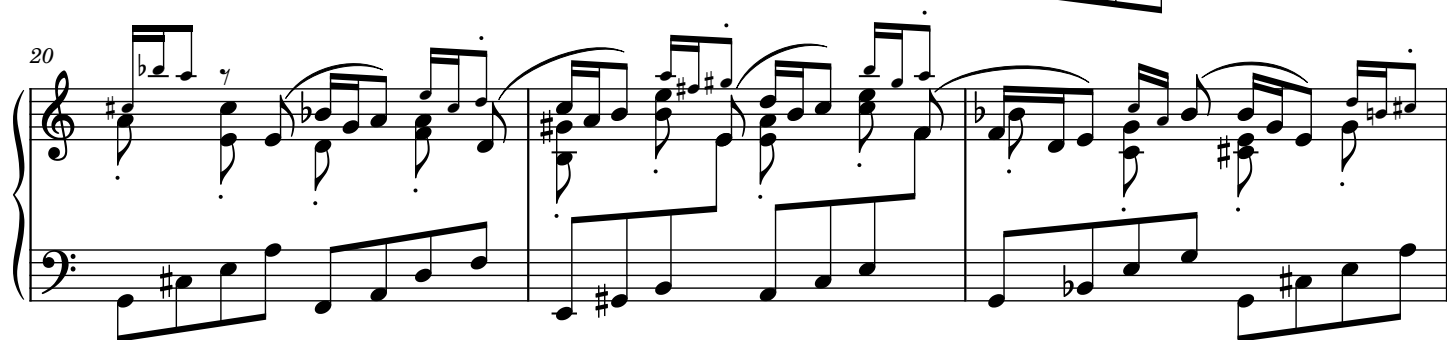
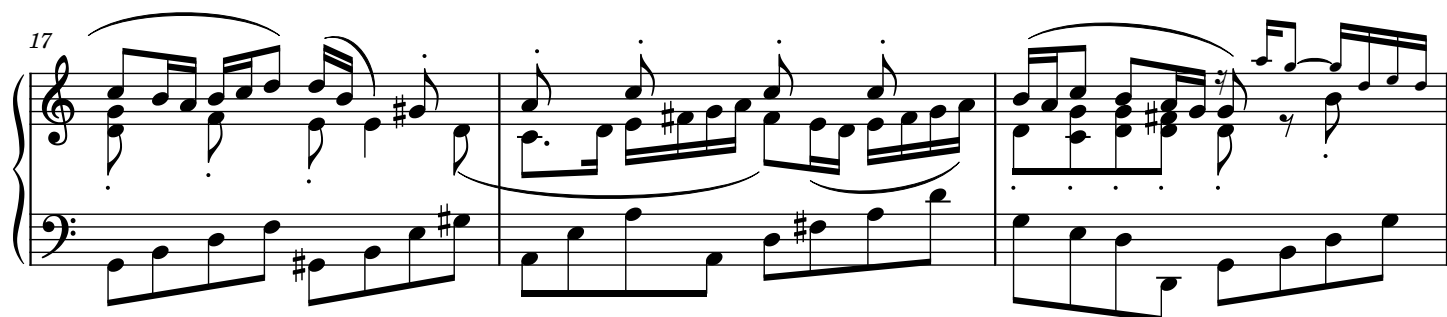
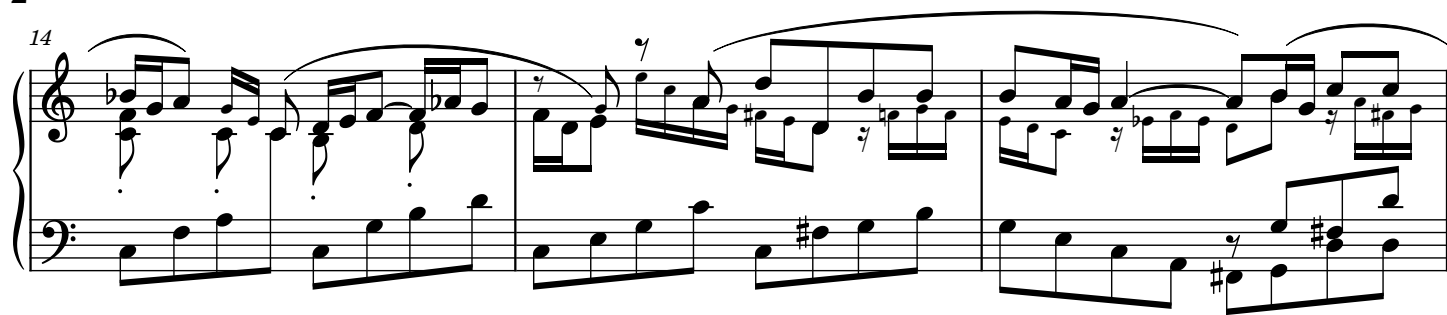
6

8

il canto sempre mp

11

5 2, 4 1, 5 1



32

Measures 32-34. Treble clef: eighth-note chords and sixteenth-note runs. Bass clef: eighth-note accompaniment.

35

Measures 35-37. Treble clef: complex sixteenth-note patterns. Bass clef: eighth-note accompaniment.

To Coda

38

Measures 38-40. Measure 38 has a double bar line. Treble clef: sixteenth-note runs. Bass clef: eighth-note accompaniment.

41

Measures 41-43. Treble clef: sixteenth-note runs. Bass clef: eighth-note accompaniment.

44

Measures 44-46. Treble clef: sixteenth-note runs. Bass clef: eighth-note accompaniment. A "1/5" marking is present below the bass staff in measure 45.

47

Measures 47-49. Treble clef: sixteenth-note runs. Bass clef: eighth-note accompaniment.

50

Measures 50-52 of a piano piece. The music is in G major (one sharp). The right hand features a complex melodic line with many beamed sixteenth and thirty-second notes, often with grace notes. The left hand provides a steady accompaniment of eighth notes. Measure 52 ends with a repeat sign.

53

Measures 53-55. The right hand continues with intricate sixteenth-note patterns. The left hand has a more active role with eighth-note runs. Measure 55 ends with a repeat sign.

56

Measures 56-58. The right hand has a more melodic focus with some longer note values, while the left hand continues with eighth-note accompaniment. Measure 58 ends with a repeat sign.

59

Measures 59-61. The right hand features a wide interval in measure 59, followed by a melodic line. The left hand has a more active eighth-note accompaniment. Measure 61 ends with a repeat sign.

62

Measures 62-64. The right hand continues with a melodic line, and the left hand has a steady eighth-note accompaniment. Measure 64 ends with a repeat sign.

65

D.C. al Coda

Measures 65-67 and the Coda. Measures 65-67 continue the piece with similar textures. Measure 67 ends with a repeat sign. The Coda, marked with a Coda symbol (a circle with a cross), consists of a final chord in the right hand and a whole note in the left hand.