

Violin II

Paysages et marines

1. Sur la Falaise

Calme, mais sans trainer

10

pp *mp* *p*

cresc.

Calme, mais sans trainer

solo

tutti

18

mf *f* *dim. molto*

4

28 Plus lent

28

2. Matin Calme

31

Molto moderato

p *pp*

4

41

Adagio (non troppo)

p

2

48

3

56

p

2

2

3. Promenade vers la Mer

Moderato

62

p mute

67

73

pp rall. Un peu plus lent

82

89

94

pp Plus lent

4. Le Chant du Chevrier

Moderato

98 *mutes*
pp *p*

104 **Un peu plus lent**

p *pp*

109 **tres calme****Tempo I (le double plus vite)**

113

pp *dim.* *ppp*

5. Soir d'Ete

Tres calme et presque adagio

116 *senza*
pp *mp* *pp*

121 *mf*

127 *pp* *f*

135 *p*

139 *3*

142 *mute*

pp *rall.*

147 **Enserrant le Mouvt.** ($\text{♩} = \text{♩}$)

6. Ceux qui s'en vont Pecher au Large, dans la Nuit

151 **Largement** ($\text{♩} = 60$)

f

160

165

mf *mp* *pp*

174

pp

181 **A tempo**

p *mf*

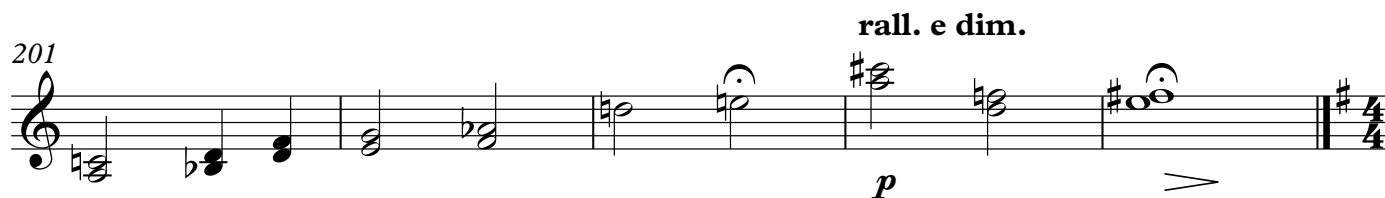
186

f

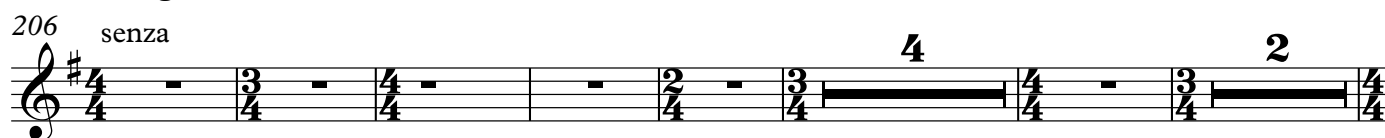
190 **Plus lent** *rall.* **Plus lent encore**

p

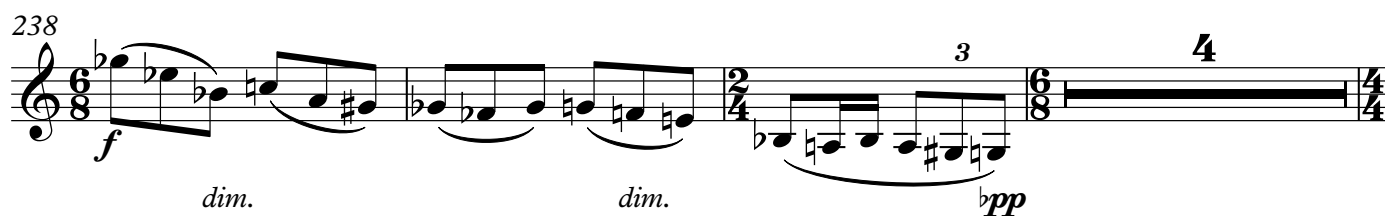
7. Soir d'Angoisses

196 *mutes* **Non troppo adagio** (♩=54)

8. La Chanson des Pommiers en Fleurs

Allegro moderato

9. Paysage d'Octobre

233 **Adagio** (♩=76)

245

pp *cresc.* *mf*

250

p *rall.*

10. Chant de Pêcheurs

256 **Moderato**

p *poco cresc.*

263

mf *p* *mp*

267

p *pp* *cresc.* *mf* *f* *cresc.*

279

f *ff*

283

ff *dim. molto*

291

ppp

11. Dans les Grands Champs

293 **Moderato con moto**

Measures 293-331 of 'Dans les Grands Champs'. The score is written for Violin II. It begins with a treble clef and a 6/8 time signature. Measure 293 has a 7-measure rest. Measure 294 has a whole note with a fermata. Measure 295 has a 3+3+2-measure rest. Measure 296 has a 3-measure rest. Measure 297 has a 3+3+2-measure rest. Measure 298 has a 6-measure rest. Measure 299 has a 3-measure rest. Measure 300 has a 3+3+2-measure rest. Measure 301 has a 6-measure rest. Measure 302 has a 3-measure rest. Measure 303 has a 3+3+2-measure rest. Measure 304 has a 6-measure rest. Measure 305 has a 3-measure rest. Measure 306 has a 2-measure rest. Measure 307 has a 3+3+2-measure rest. Measure 308 has a 9-measure rest. Measure 309 has a 9-measure rest. Measure 310 has a 9-measure rest. Measure 311 has a 9-measure rest. Measure 312 has a 9-measure rest. Measure 313 has a 9-measure rest. Measure 314 has a 9-measure rest. Measure 315 has a 9-measure rest. Measure 316 has a 9-measure rest. Measure 317 has a 9-measure rest. Measure 318 has a 9-measure rest. Measure 319 has a 9-measure rest. Measure 320 has a 9-measure rest. Measure 321 has a 9-measure rest. Measure 322 has a 9-measure rest. Measure 323 has a 9-measure rest. Measure 324 has a 9-measure rest. Measure 325 has a 9-measure rest. Measure 326 has a 9-measure rest. Measure 327 has a 9-measure rest. Measure 328 has a 9-measure rest. Measure 329 has a 9-measure rest. Measure 330 has a 9-measure rest. Measure 331 has a 9-measure rest.

306 *p* *mutes*

311 **[Tempo]** *pp*

320 *f*

326 *dim.*

331 *5*

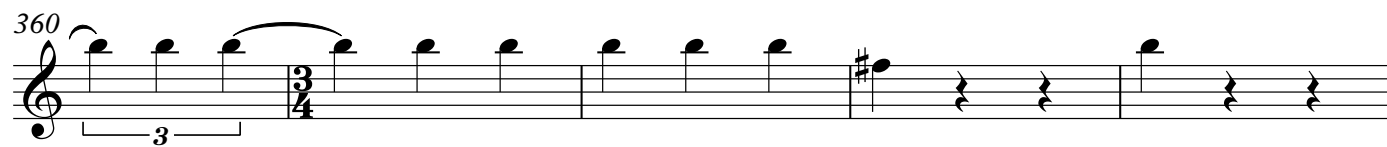
12. Poeme Virgilian

342 **Tres clame (adagio)**

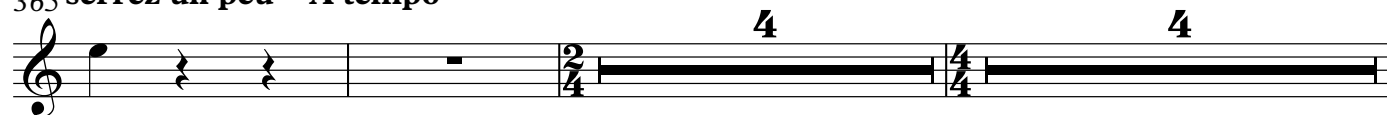
Measures 342-351 of 'Poeme Virgilian'. The score is written for Violin II. It begins with a treble clef and a 3/4 time signature. Measure 342 has a 3-measure rest. Measure 343 has a 5-measure rest. Measure 344 has a 4-measure rest. Measure 345 has a 3-measure rest. Measure 346 has a 2-measure rest. Measure 347 has a 5-measure rest. Measure 348 has a 2-measure rest. Measure 349 has a 3-measure rest. Measure 350 has a 3-measure rest. Measure 351 has a 3-measure rest.

pp *mutes* , *senza*

351 *pizz.* *mp* *2*

Tres calme**encor plus calme**

365 serrez un peu A tempo



375 Bien calme

