

Englischhorn  
(ad lib.)

# Rodrigo-Suite

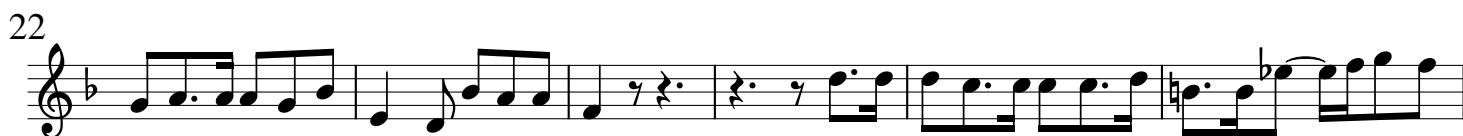
Georg Friedrich Händel  
HWV 5

$\text{♩} = 100$

## OUVERTURE



$\text{♩} = 75$



$\text{♩} = 100$

## Lentement



1. 2.



# GIGUE

10

20

The Gigue section consists of two staves of music. The first staff contains measures 1 through 10, and the second staff contains measures 11 through 20. The key signature has one flat (B-flat), and the time signature is 6/8. The music features a mix of eighth and sixteenth notes, with some rests and repeat signs.

# SARABANDE

12

24

The Sarabande section consists of two staves of music. The first staff contains measures 1 through 12, and the second staff contains measures 13 through 24. The key signature has one flat (B-flat), and the time signature is 3/4. The music is characterized by a slower tempo with a focus on half and quarter notes.

$\text{♩} = 190$

# MATELOT

9

19

The Matelot section consists of two staves of music. The first staff contains measures 1 through 9, and the second staff contains measures 10 through 19. The key signature has one flat (B-flat), and the time signature is common time (C). The music features a steady eighth-note rhythm.

$\text{♩} = 108$

# MENUET I

11

22

The Menuet I section consists of two staves of music. The first staff contains measures 1 through 11, and the second staff contains measures 12 through 22. The key signature has one flat (B-flat), and the time signature is 3/4. The music is a simple, elegant minuet with a mix of eighth and quarter notes.

♩ = 190

Englischhorn (ad lib.)

## BOURRÉE



8



17



26



## [RIGAUDON]



8



15



23



♩ = 108

## MENUET II



9



19



# PASSACAILLE

12

16

2

40

30

80

91

102

2

114

125

136

147

159

170