

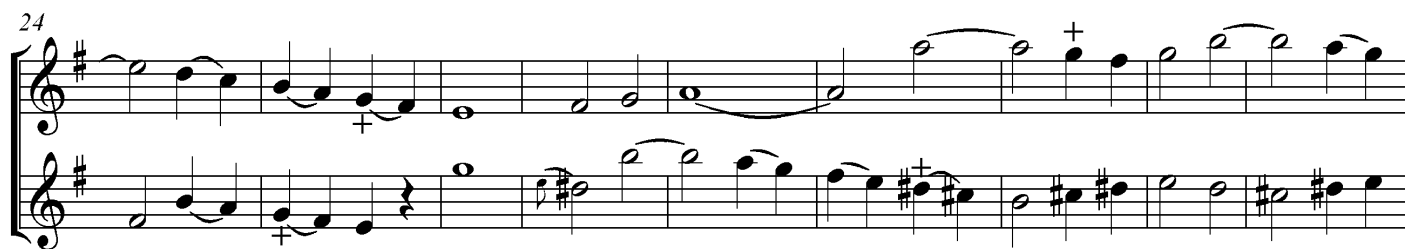
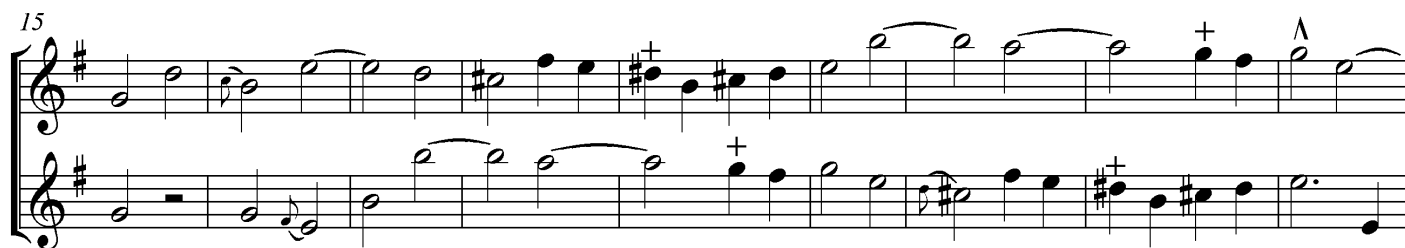
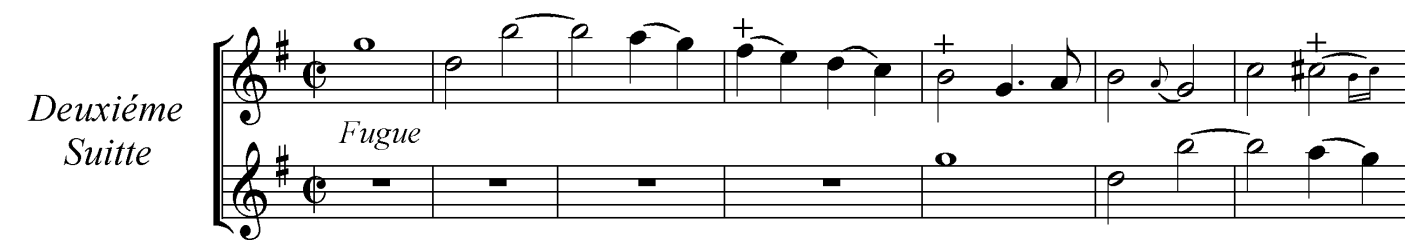
PREMIER ŒUVRE

*Contenant III Suites a II Flûtes Traversieres Seules
Avec III autres Suites
Dessus et Basse, Pour les Hautbois, Flûtes, Violons, Etc.
Par Mr. P. Philidor
Paris, 1717*

Pierre Danican Philidor

*Deuxième
Suite*

Fugue



33

41

51

60

70

Gayment §

Air en Rondeau

*flattement

8

15

1 2 Premr. Couplet

Fin

Fin

fort

21

doux

fort

28

Rondeau

2e. Couplet

§

34

41

Rondeau

Sarabande

Tres proprement

7

13

Fugue



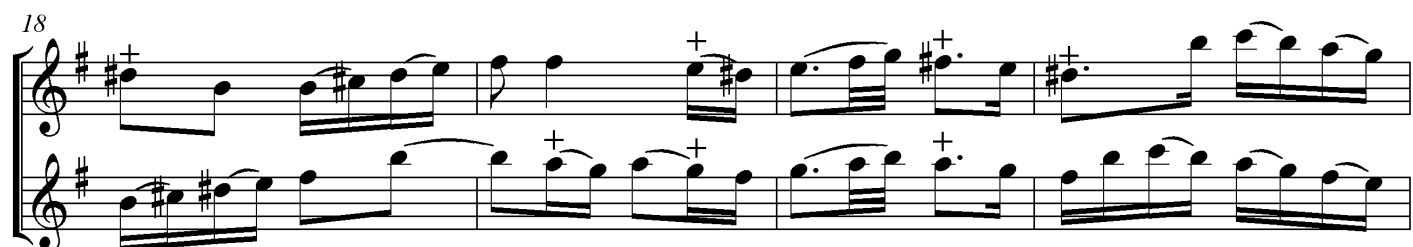
7



12



18



22



28

Measures 28-32. Treble and bass staves. Key signature: one sharp (F#). Measure 28 has a '+' in the bass staff. Measure 32 has a '+' in the bass staff.

33

Measures 33-37. Treble and bass staves. Key signature: one sharp (F#). Measure 33 has a '+' in the bass staff.

38

Measures 38-42. Treble and bass staves. Key signature: one sharp (F#). Measures 38, 39, 40, 41, and 42 have '+' signs in the treble staff.

43

Measures 43-47. Treble and bass staves. Key signature: one sharp (F#). Measures 43, 44, 45, 46, and 47 have '+' signs in the bass staff. Measure 45 has a wavy line in the bass staff.

48

Measures 48-52. Treble and bass staves. Key signature: one sharp (F#). Measures 48, 49, 50, 51, and 52 have '+' signs in the bass staff.

53

59

64

69