

Violino Primo

Sinfonia

RV 122

1. Allegro

Antonio Vivaldi

(1678 - 1741)

4

7

10

13

16

19

22

25

28

p

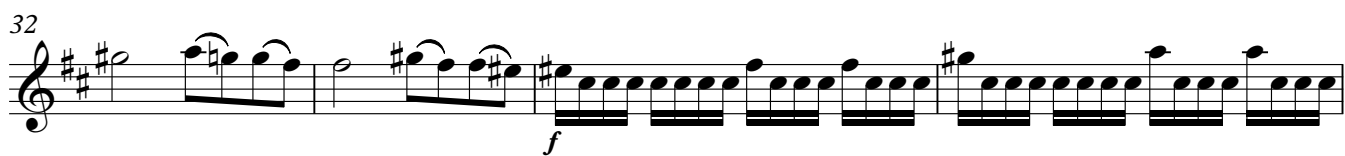
f

p

f

V.S.

32



32 33 34 35

f

This staff contains measures 32 through 35. It begins with a half note G4, followed by eighth notes A4-B4, C5-B4, and A4-G4. Measure 33 continues with a half note A4, followed by eighth notes B4-A4, G4-F#4, and E4-D#4. Measure 34 features a series of eighth notes: F#4-G4, A4-B4, C5-B4, A4-G4, F#4-G4, A4-B4, C5-B4, A4-G4. Measure 35 continues with eighth notes: F#4-G4, A4-B4, C5-B4, A4-G4, F#4-G4, A4-B4, C5-B4, A4-G4. A forte (*f*) dynamic marking is placed below the first measure of this staff.

36



36 37 38 39

This staff contains measures 36 through 39. Measure 36 is a continuous eighth-note run: F#4-G4, A4-B4, C5-B4, A4-G4, F#4-G4, A4-B4, C5-B4, A4-G4. Measure 37 has a quarter rest followed by eighth notes A4-B4, C5-B4, and A4-G4. Measure 38 has eighth notes F#4-G4, A4-B4, C5-B4, and a quarter rest. Measure 39 has a quarter note A4, followed by eighth notes G4-F#4 and E4-D#4.

40



40 41 42

This staff contains measures 40 through 42. Measure 40 is a continuous eighth-note run: F#4-G4, A4-B4, C5-B4, A4-G4, F#4-G4, A4-B4, C5-B4, A4-G4. Measure 41 continues with eighth notes: F#4-G4, A4-B4, C5-B4, A4-G4, F#4-G4, A4-B4, C5-B4, A4-G4. Measure 42 continues with eighth notes: F#4-G4, A4-B4, C5-B4, A4-G4, F#4-G4, A4-B4, C5-B4, A4-G4.

43



43 44 45

This staff contains measures 43 through 45. Measure 43 is a continuous eighth-note run: F#4-G4, A4-B4, C5-B4, A4-G4, F#4-G4, A4-B4, C5-B4, A4-G4. Measure 44 continues with eighth notes: F#4-G4, A4-B4, C5-B4, A4-G4, F#4-G4, A4-B4, C5-B4, A4-G4. Measure 45 continues with eighth notes: F#4-G4, A4-B4, C5-B4, A4-G4, F#4-G4, A4-B4, C5-B4, A4-G4.

46



46 47 48

This staff contains measures 46 through 48. Measure 46 has eighth notes F#4-G4, A4-B4, and a quarter rest. Measure 47 has eighth notes C5-B4, A4-G4, F#4-G4, and a quarter rest. Measure 48 has eighth notes A4-B4, C5-B4, A4-G4, and a quarter rest.

49



49 50 51

This staff contains measures 49 through 51. Measure 49 has a quarter rest followed by eighth notes A4-B4, C5-B4, and A4-G4. Measure 50 has eighth notes F#4-G4, A4-B4, C5-B4, and a quarter rest. Measure 51 has eighth notes A4-B4, C5-B4, A4-G4, and a quarter rest.

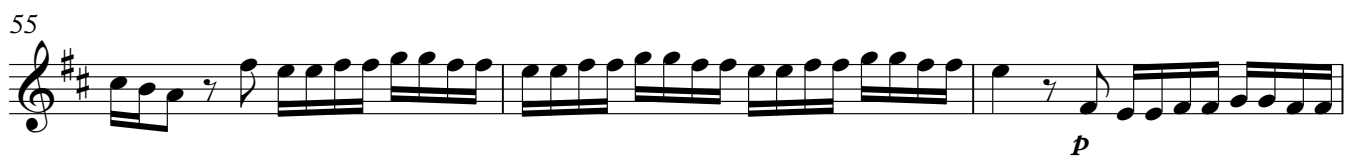
52



52 53 54

This staff contains measures 52 through 54. Measure 52 is a continuous eighth-note run: F#4-G4, A4-B4, C5-B4, A4-G4, F#4-G4, A4-B4, C5-B4, A4-G4. Measure 53 continues with eighth notes: F#4-G4, A4-B4, C5-B4, A4-G4, F#4-G4, A4-B4, C5-B4, A4-G4. Measure 54 continues with eighth notes: F#4-G4, A4-B4, C5-B4, A4-G4, F#4-G4, A4-B4, C5-B4, A4-G4.

55



55 56 57

p

This staff contains measures 55 through 57. Measure 55 has eighth notes F#4-G4, A4-B4, and a quarter rest. Measure 56 has eighth notes C5-B4, A4-G4, F#4-G4, and a quarter rest. Measure 57 has eighth notes A4-B4, C5-B4, A4-G4, and a quarter rest. A piano (*p*) dynamic marking is placed below the first measure of this staff.

58



58 59 60

f

This staff contains measures 58 through 60. Measure 58 is a continuous eighth-note run: F#4-G4, A4-B4, C5-B4, A4-G4, F#4-G4, A4-B4, C5-B4, A4-G4. Measure 59 continues with eighth notes: F#4-G4, A4-B4, C5-B4, A4-G4, F#4-G4, A4-B4, C5-B4, A4-G4. Measure 60 continues with eighth notes: F#4-G4, A4-B4, C5-B4, A4-G4, F#4-G4, A4-B4, C5-B4, A4-G4. A forte (*f*) dynamic marking is placed below the first measure of this staff.

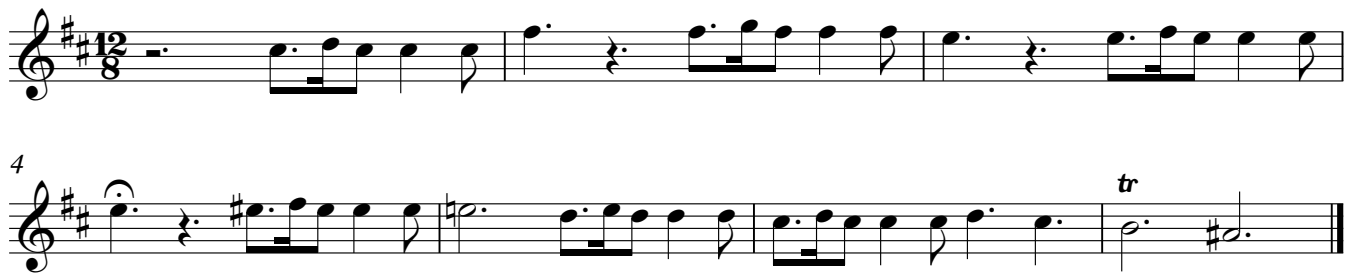
61



61 62 63

This staff contains measures 61 through 63. Measure 61 is a continuous eighth-note run: F#4-G4, A4-B4, C5-B4, A4-G4, F#4-G4, A4-B4, C5-B4, A4-G4. Measure 62 has a half note A4, followed by quarter notes G4 and F#4. Measure 63 has a half note E4, followed by quarter notes D#4 and C5.

2. Largo



3. Presto

