

Descant Recorder

# "The Flatt Consort"

Set 1

Matthew Locke (1630 - 1677)

## 1. Fantasia I

♩ = 110

8

10

18

25

33

39

46

54

60

65

## 2. Courant

♩ = 160

Musical score for '2. Courant' in 3/4 time, key of B-flat major. The score consists of four staves of music. The first staff starts with a treble clef, a key signature of two flats (B-flat major), and a 3/4 time signature. The tempo is marked as ♩ = 160. The music features a mix of eighth and sixteenth notes, with some measures containing rests. The second staff includes a repeat sign. The third and fourth staves continue the melodic line, ending with a double bar line.

## 3. Fantasia II

♩ = 100

Musical score for '3. Fantasia II' in common time (C), key of B-flat major. The score consists of five staves of music. The first staff starts with a treble clef, a key signature of two flats (B-flat major), and a common time signature. The tempo is marked as ♩ = 100. The music features a mix of eighth and sixteenth notes, with some measures containing rests. The second staff includes a repeat sign. The third and fourth staves continue the melodic line, ending with a double bar line. The fifth staff continues the melodic line, ending with a double bar line.



#### 4. Saraband

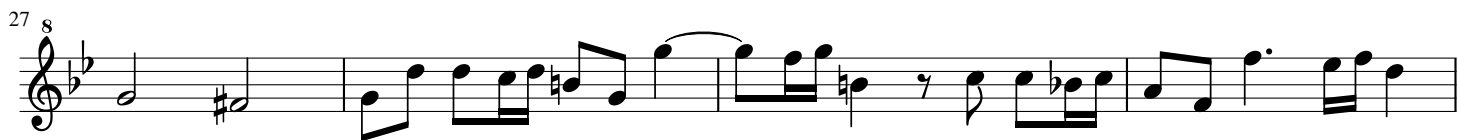
$\text{♩} = 100$



#### 5. Fantasia III

$\text{♩} = 110$





## 6. Jigg

$\text{♩} = 100$



$\text{♩} = 100$

