

Chamber Concerto RV 84

Score

for violin, viola & cello

Antonio Vivaldi

Allegro

Violin

Viola

Cello

Measures 1-6 of the score. The Violin part is in treble clef with a key signature of two sharps (F# and C#) and a 3/8 time signature. It features a series of eighth-note runs starting in measure 4. The Viola part is in alto clef with the same key signature and time signature, featuring a series of eighth-note runs starting in measure 1. The Cello part is in bass clef with the same key signature and time signature, featuring a series of eighth-note runs starting in measure 1.

7

Vln.

Vla.

Vc.

Measures 7-13 of the score. The Violin part continues with eighth-note runs. The Viola part continues with eighth-note runs. The Cello part continues with eighth-note runs.

14

Vln.

Vla.

Vc.

Measures 14-20 of the score. The Violin part continues with eighth-note runs. The Viola part continues with eighth-note runs. The Cello part continues with eighth-note runs.

21

Vln.

Vla.

Vc.

Measures 21-24 of the score. The Violin part continues with eighth-note runs. The Viola part continues with eighth-note runs. The Cello part continues with eighth-note runs.

Chamber Concerto RV 84

25

Vln.

Vla.

Vc.

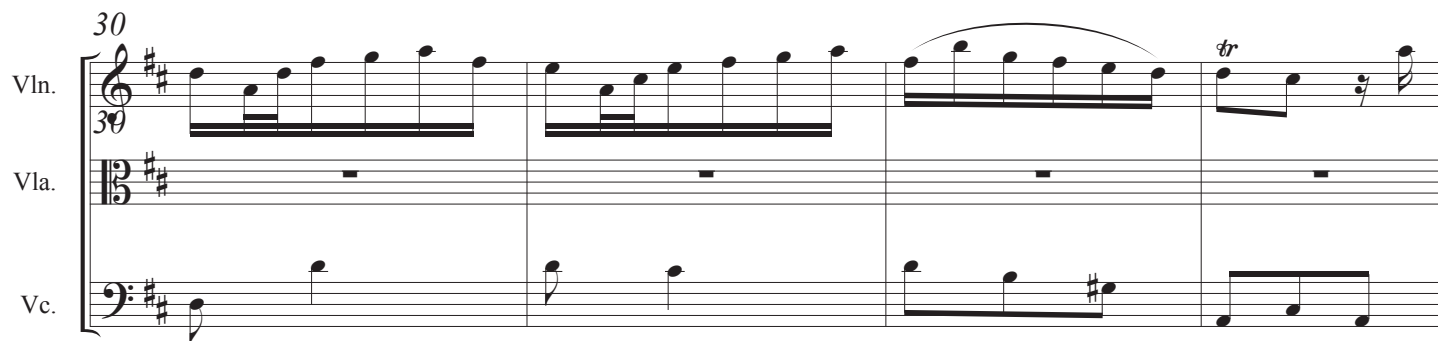


30

Vln.

Vla.

Vc.



34

Vln.

Vla.

Vc.

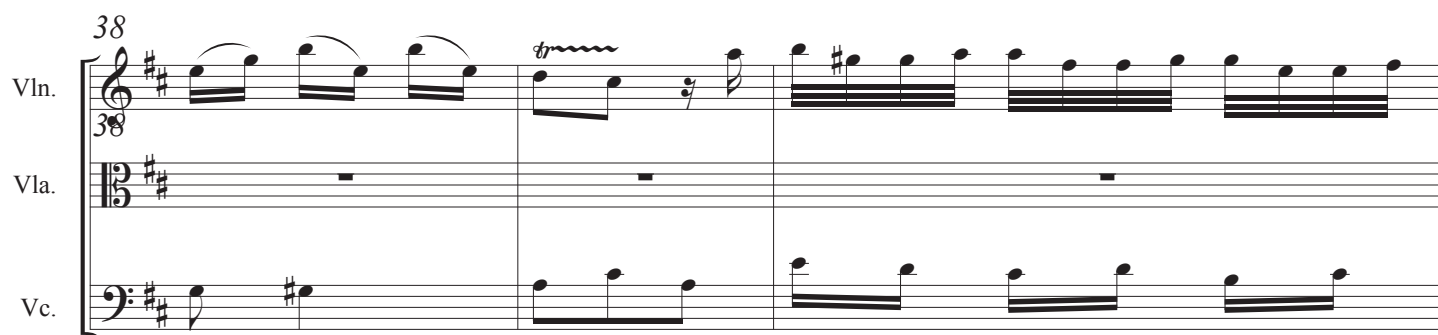


38

Vln.

Vla.

Vc.



41

Vln.

Vla.

Vc.



Chamber Concerto RV 84

3

45

Vln.

Vla.

Vc.

49

51

Vln.

Vla.

Vc.

58

Vln.

Vla.

Vc.

65

Vln.

Vla.

Vc.

73

Vln.

Vla.

Vc.

Chamber Concerto RV 84

This musical score page contains measures 78 through 98 of Chamber Concerto RV 84. It is arranged for Violin (Vln.), Viola (Vla.), and Violoncello (Vc.). The key signature is two sharps (F# and C#), and the time signature is 3/4. The score is divided into five systems, each starting with a measure number in the top left corner of the system.

- System 1 (Measures 78-82):** The Violin part features a continuous sixteenth-note pattern. The Viola and Violoncello parts have more sparse, rhythmic accompaniment.
- System 2 (Measures 83-86):** The Violin part continues with rapid sixteenth-note passages. The Viola part remains mostly silent, while the Violoncello provides a steady bass line.
- System 3 (Measures 87-91):** The Violin part shows some melodic variation with slurs. The Viola part enters with a rhythmic pattern in measure 89. The Violoncello continues its accompaniment.
- System 4 (Measures 92-97):** All three instruments are more active. The Violin and Viola parts have complex sixteenth-note figures, while the Violoncello provides a consistent harmonic foundation.
- System 5 (Measures 98-102):** The Violin part features a trill in measure 98. The Viola part also includes a trill in measure 98. The Violoncello part continues with its characteristic rhythmic accompaniment.

Chamber Concerto RV 84

5

105

Vln. *105*

Vla. *105*

Vc.

112

Vln. *112*

Vla. *112*

Vc.

119

Vln. *119*

Vla. *119*

Vc.

125

Vln. *125*

Vla. *125*

Vc.

Andante

Vln.

Vla.

Vc.

5

Vln. *tr*

Vla.

Vc.

9

Vln.

Vla.

Vc.

14

Vln.

Vla.

Vc.

Allegro

12

Vln. *tr*

Vla. *tr*

Vc.

4

Vln.

Vla.

Vc.

Chamber Concerto RV 84

7

8

Vln.

Vla.

Vc.

12

Vln.

Vla.

Vc.

17

Vln.

Vla.

Vc.

20

Vln.

Vla.

Vc.

24

Vln.

Vla.

Vc.

Detailed description: This image shows a page of a musical score for Chamber Concerto RV 84, page 7. The score is written for Violin (Vln.), Viola (Vla.), and Violoncello (Vc.). It consists of five systems of music, each containing three staves. The key signature is one sharp (F#), and the time signature is 3/4. The measures are numbered 8, 12, 17, 20, and 24 at the beginning of each system. The notation includes various musical symbols such as notes, rests, beams, and slurs. The Vln. part features a melodic line with many eighth and sixteenth notes. The Vla. part provides harmonic support with a mix of eighth and sixteenth notes. The Vc. part has a more rhythmic, bass-line quality with many eighth notes and rests.

27

Vln.

Vla.

Vc.

30

Vln.

Vla.

Vc.

34

Vln.

Vla.

Vc.

38

Vln.

Vla.

Vc.

42

Vln.

Vla.

Vc.

The image displays a musical score for Chamber Concerto RV 84, spanning measures 27 to 42. The score is arranged in five systems, each containing three staves: Violin (Vln.), Viola (Vla.), and Violoncello (Vc.). The key signature is two sharps (F# and C#), and the time signature is 3/4. The notation includes various musical symbols such as notes, rests, beams, and slurs. The first system (measures 27-29) shows the Vln. and Vc. parts with active melodic lines, while the Vla. part has a whole rest. The second system (measures 30-33) features a more complex Vln. line with many sixteenth notes, while the Vla. and Vc. parts have rests. The third system (measures 34-37) shows the Vln. and Vc. parts with active lines, and the Vla. part with a whole rest. The fourth system (measures 38-41) shows all three parts with active lines. The fifth system (measures 42-45) shows the Vln. and Vc. parts with active lines, and the Vla. part with a whole rest. The score is written in a clear, professional style with standard musical notation.

Chamber Concerto RV 84

9

46

Vln.

Vla.

Vc.

49

Vln.

Vla.

Vc.

53

Vln.

Vla.

Vc.

57

Vln.

Vla.

Vc.

60

Vln.

Vla.

Vc.

Detailed description: This image shows a page of a musical score for Chamber Concerto RV 84, page 9. The score is written for Violin (Vln.), Viola (Vla.), and Violoncello (Vc.). The key signature is two sharps (F# and C#), and the time signature is 4/8. The page is divided into five systems, each containing three staves. The measures are numbered 46, 49, 53, 57, and 60 at the beginning of each system. The Violin part features a melodic line with eighth and sixteenth notes, often beamed together. The Viola part provides harmonic support with similar rhythmic patterns. The Violoncello part plays a more active, rhythmic role with eighth and sixteenth notes. The score includes various musical notations such as beams, slurs, and accidentals.

63

Vln.

Vla.

Vc.

66

Vln.

Vla.

Vc.

70

Vln.

Vla.

Vc.

63

66

70

Chamber Concerto RV 84

Violin

for violin, viola & cello

Antonio Vivaldi

Allegro

3 4 5 6

7 8 9 10

11 12 13 14

15 16 17 18

19 20 21 22

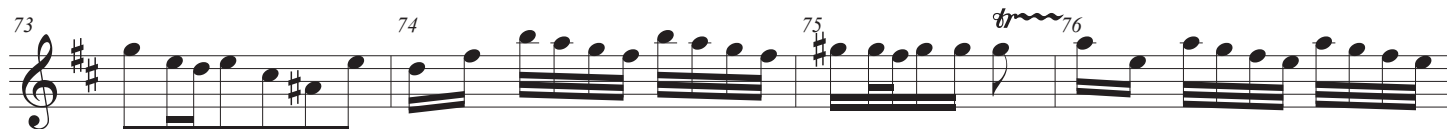
23 24 25 26

27 28 29 30

31 32 33 34

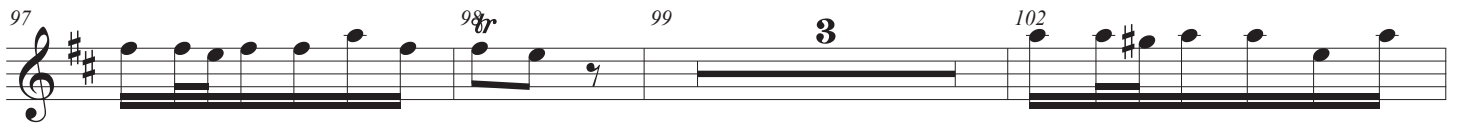
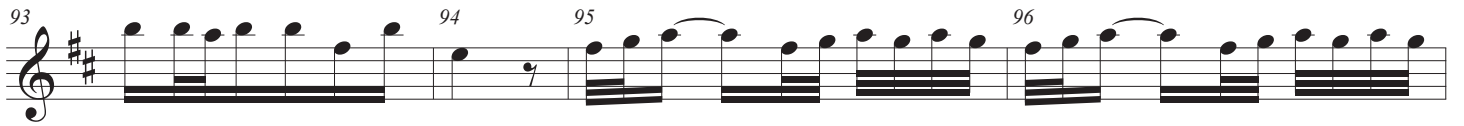
35 36 37 38

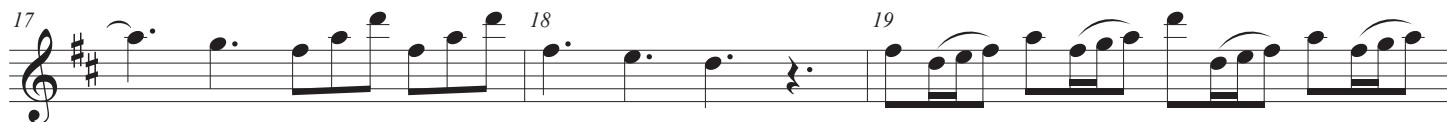
39 40 41 42



Chamber Concerto RV 84

3



**Andante****Allegro**

Chamber Concerto RV 84

5

29 30 31 32

33 34 35 36

37 38 39 40

41 42 43 44

45 46 47

48 49 50

51 52 53 54

55 56 57 58

59 60 61

62 63 64 65 66

67 68 69 70

71

Chamber Concerto RV 84

Viola

for violin, viola & cello

Antonio Vivaldi

Allegro

8

9

10

11

12

13

14

15

16

17

18

19

20

21

22

23

24

25

26

27

28

29

30

17

47

48

49

50

51

2

53

54

55

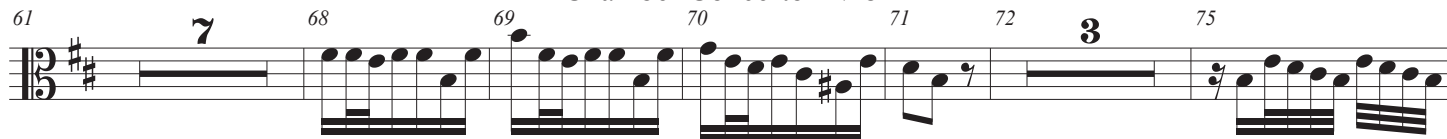
56

57

58

59

60

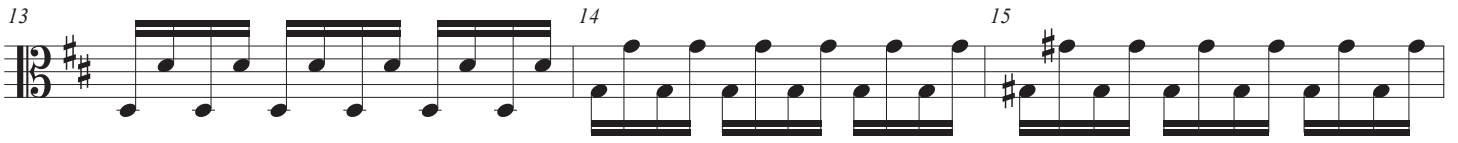


Andante

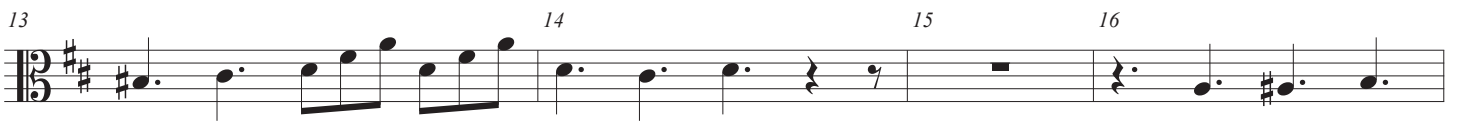


Chamber Concerto RV 84

3



Allegro



25



30



39



43



51



55



59



65



Chamber Concerto RV 84

5



Chamber Concerto RV 84

Cello

for violin, viola & cello

Antonio Vivaldi

Allegro

The musical score for the Cello part of Chamber Concerto RV 84 by Antonio Vivaldi is presented in a single system with 57 measures. The key signature is D major (two sharps) and the time signature is 3/8. The tempo is marked 'Allegro'. The score is written on a single staff with a bass clef. The measures are numbered 1 through 57. The notation includes various rhythmic values, including eighth and sixteenth notes, and rests. The piece concludes with a final cadence in measure 57.

58

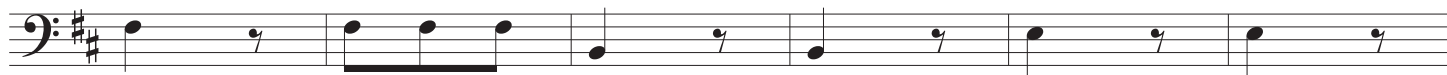
59

60

61

62

63



64

65

66

67

68

69



70

71

72

73

74

75



76

77

78

79

80

81



82

83

84

85

86

87



88

89

90

91

92

93



94

95

96

97

98

99



100

101

102

103

104

105



106

107

108

109

110

111



Chamber Concerto RV 84

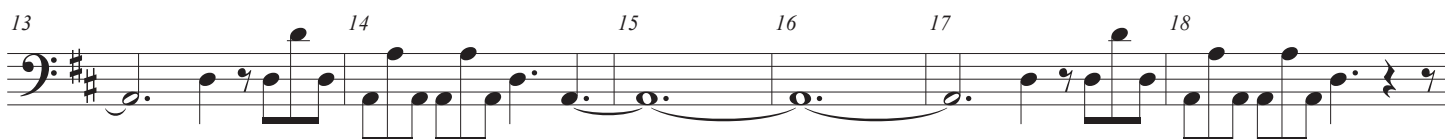
3



Andante



Allegro



19 20 21 22 23 24

25 26 27 28 29 30

31 32 33 34 35 36

37 38 39 40 41 42

43 44 45 46 47 48

49 50 51 52 53 54

55 56 57 58 59 60

61 62 63 64 65 66

67 68 69 70 71 72

The image displays a musical score for the Chamber Concerto RV 84, specifically measures 19 through 72. The score is written in bass clef with a key signature of one sharp (F#). The notation includes various rhythmic values such as eighth, sixteenth, and thirty-second notes, as well as rests and ties. Measures 39 and 40 feature a key signature change to two sharps (F# and C#). The score is organized into nine systems, each containing six measures. Measure numbers 19 through 72 are printed above the corresponding measures. The final measure (72) concludes with a double bar line.