

Violoncell

Jan BRANDTS BUYS
(1868-1933)

ROMANTISCHE SERENADE

Op. 25 (1910)

für Streichquartett

Violoncell

ROMANTISCHE SERENADE

Op. 25 (1910)

1. NOCTURNE

Andante sostenuto

con sord. 1(-8)

3 3 3 3 2 3 4 5

6 *ppp* *sim.* 1(-6)

12 2 3 4 5 6

18 **A**

24 *pp* *pp* *fz* *pp*

30 *molto rit.* *a tempo*

36 **B** Poco più moto

44 *molto cresc.* *pizz.* *p*

51 *arco* **C** *f*

[illegible]

2. ALLA MARCIA

Adagio ma non troppo

pizz.
mp

5

9

13

arco
tr pizz.
ff

A Animato

18

23

rit. Tempo I
mf

28

B

p

32

poco rit.

36

arco

41

C Più lento
pp

45

49 **D**

f *legatissimo*

53

57 **E** *poco rit.* *pizz.* **Tempo I**

61 *p*

65 *arco* *tr* *f*

71 **F** *Animato* *tr* *tr* *tr* *tr* *pizz.* *ff*

76 *rit.*

81 **G** **Tempo I** *mf*

85 *p*

89 *poco rit.*

93 *arco*

3. SERENADE

Allegro molto vivace

pizz.
p

9 *mf*

17

27

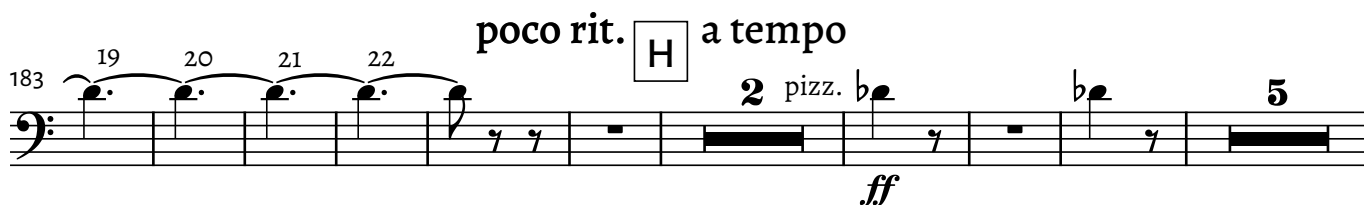
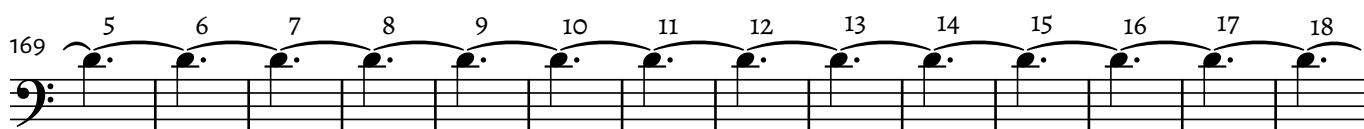
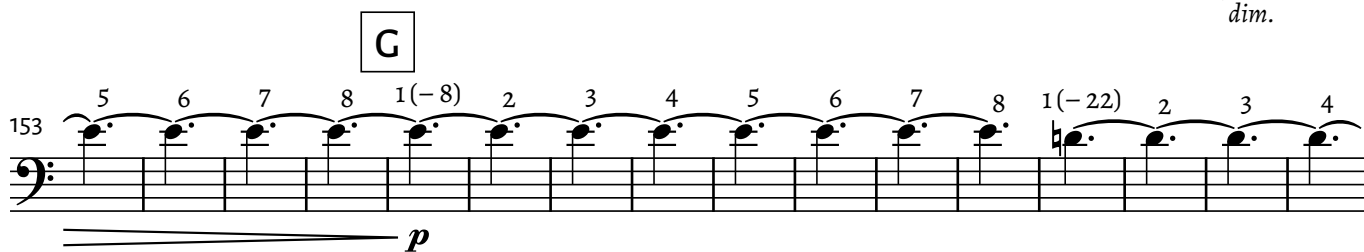
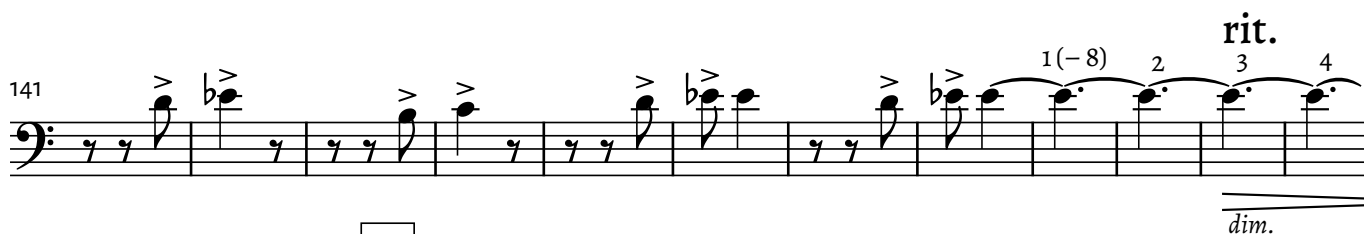
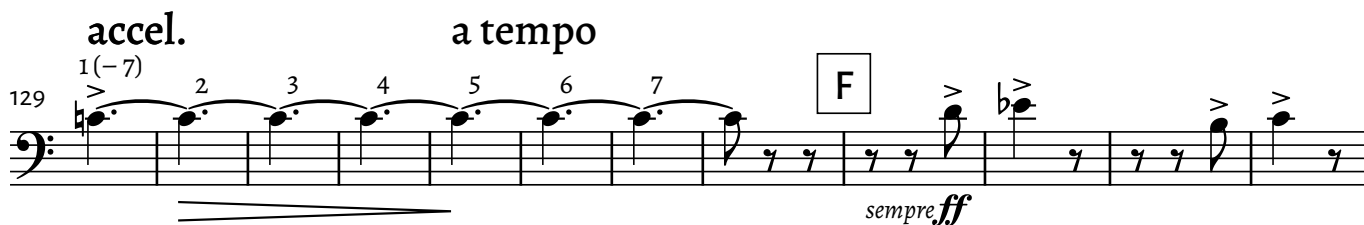
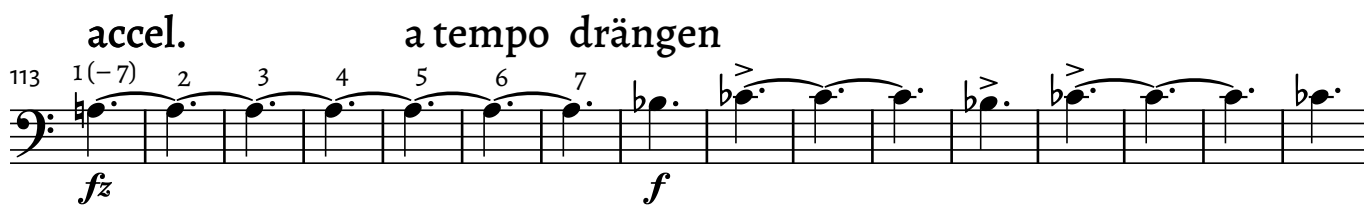
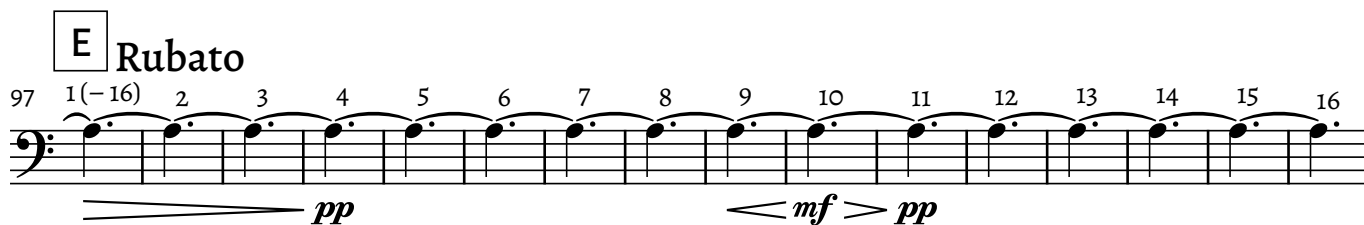
37 **A** *p*

47 **B** *mf*

57 **C**

67

76 **D** *f* *mp* 3



poco rit. J Tempo primo

199 *f* *mf* 3 2

209 *mp*

217 *mf*

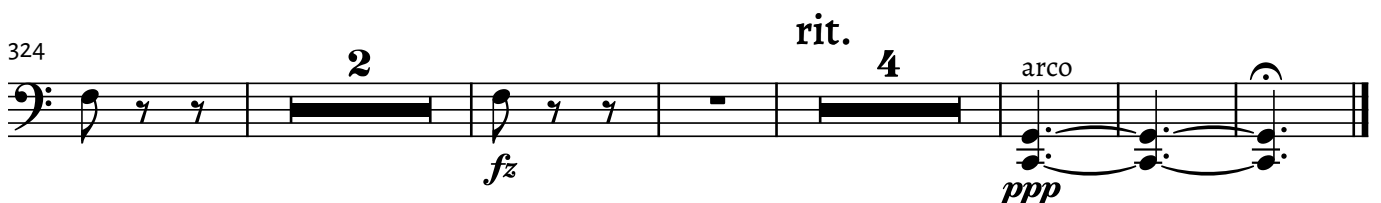
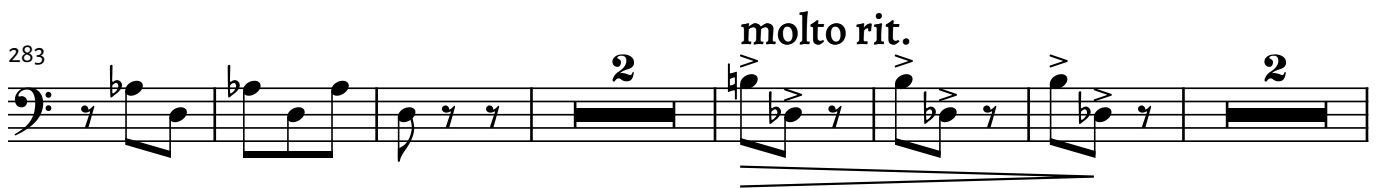
225

233

241 K *p*

249 *mf*

257



4. SCHEMEN

Allegro molto

pizz. > arco >

f *pp*

6

12

19 **A** sul pont. *ppp*

27

34 [ord.] **B** *pp* *mp* *f*

40

45 *p* *fp* *pp* **C**

51

57

64 **D** sul pont. *ppp*

72



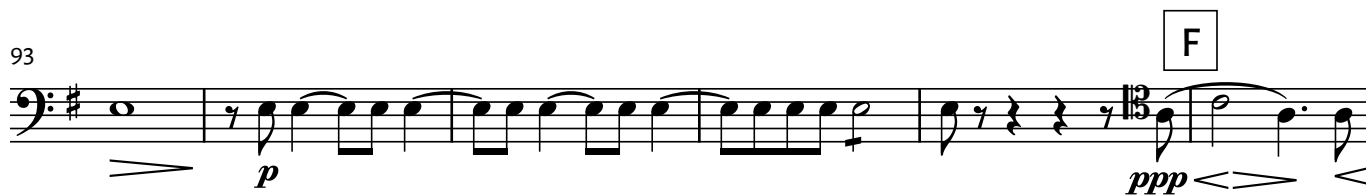
80



87



93



99



106



113



120



125



131 [H] Molto meno mosso



141



5. NOCTURNE

Sostenuto

8

A

15

B

22

accel. poco a poco

mf cresc.

26

ff

29

C Appassionato

ff

drängend a tempo

34

1(-15) 2 3 4 5 6 7 8 9 10

44

11 12 13 14 15

poco rit.

D [a tempo]

pp

f espress.

51

57 *sempre f*

62 **E** *pp*

68 1(-5) 2 3 4 5 **F** *fp*

76 *fp fp fp fp fp fp*

81 **G** *fp fp fp fp fp*

87 *f ffp pp*

95 **H** *f sfz sfz sfz sfz*

103 **J** Langsam abnehmen *fp pp*

112 **K** *fp p pp* *morendo*