

Quartets (Trios) from Cantata 185.1

LET VOICE SOLO PARTS ALWAYS PREDOMINATE

J. S. Bach [arr. P. Lang] BWV 185.1

Aria Duett for Oboe or Tromba, Soprano, Alto and Bc " Barmherziges Herze"

arr. in 4 (3) parts: 1.Violin or Oboe (optional), 2(1). Violin or Viola,
3(2). Viola or Cello, 4(3). Cello

$\text{♩} = 52$

1 Violin or Oboe for Cantus Firmus (optional)
bwv 185.1 s4

2 Violin for Soprano Solo
bwv 185.1 s4(3)

2 Viola for Soprano Solo
bwv 185.1 s4(3)

3 Viola for Tenor Solo
bwv 185.1 s4(3)

3 Violoncello for Tenor Solo
bwv 185.1 s4(3)

4 Violoncello for Bc
bwv 185.4 s4(3)

5

9

13

Soprano

Vln. 1

Vln. 2

Vla.

Vla.

Vc.

Vc.

ff

f

f

f

f

17

Vln. 1

Vln. 2

Vla.

Vla.

Vc.

Vc.

f

tr

tr

21

Vln. 1

Vln. 2

Vla.

Vla.

Vc.

Vc.

Tenor

Tenor

f

f

f

tr

tr

25

Vln. 1 *Soprano*

Vln. 2

Vla.

Vla.

Vc.

Vc.

ff

p

p

p

29

Vln. 1

Vln. 2

Vla.

Vla.

Vc.

Vc.

mp

mp

p

p

mp

33

Vln. 1

Vln. 2

Vla.

Vla.

Vc.

Vc.

ff

mf

mf

mf

f

f

mf

37

37

Vln. 1

Vln. 2

Vla.

Vla.

Vc.

Vc.

f

f

f

f

f

41

41

Vln. 1

Vln. 2

Vla.

Vla.

Vc.

Vc.

ff

p

p

p

p

45

45

Vln. 1

Vln. 2

Vla.

Vla.

Vc.

Vc.

f

f

f

f

f

49

Vln. 1
 Vln. 2
 Vla.
 Vla.
 Vc.
 Vc.

53

Vln. 1
 Vln. 2
 Vla.
 Vla.
 Vc.
 Vc.

57

Vln. 1
 Vln. 2
 Vla.
 Vla.
 Vc.
 Vc.

Soprano

61

Vln. 1

Vln. 2

Vla.

Vc.

Vc.

The image shows a musical score for measures 61-64 of 'The Swan' from Swan Lake. The score is written for five staves: Vln. 1, Vln. 2, Vla., Vc., and Vc. The key signature is three sharps (F#, C#, G#) and the time signature is 3/4. Measure 61 starts with a treble clef and a key signature change to three sharps. Vln. 1 has a whole rest. Vln. 2 has a quarter note G4, an eighth note A4, a quarter note B4, an eighth note A4, and a quarter note G4. Vla. has a quarter note G3, an eighth note A3, a quarter note B3, an eighth note A3, and a quarter note G3. Vc. has a quarter note G2, an eighth note A2, a quarter note B2, an eighth note A2, and a quarter note G2. Vc. has a quarter note G2, an eighth note A2, a quarter note B2, an eighth note A2, and a quarter note G2. Measure 62 continues the patterns. Measure 63 features a trill (tr) on G4 for Vln. 2 and a trill (tr) on G3 for Vla. Measure 64 continues the patterns.

65

Vln. 1

Vln. 2

Vla.

Vla.

Vc.

Vc.

ff

69

Vln. 1

Vln. 2

Vla.

Vc.

Vc.

tr

72

Vln. 1

Vln. 2

Vla.

Vla.

Vc.

Vc.

f

tr.

rit.

72

73

74

75

76

1 Violin or Oboe for Cantus Firmus (optional) bwv 185.1 s4

Quartets (Trios) from Cantata 185.1

LET VOICE SOLO PARTS ALWAYS PREDOMINATE

J. S. Bach [arr. P. Lang] BWV 185.1

Aria Duett for Oboe or Tromba, Soprano, Alto and Bc "Barmherziges Herze"

arr. in 4 (3) parts: 1. Violin or Oboe (optional), 2(1). Violin or Viola,

3(2). Viola or Cello, 4(3). Cello

$\text{♩} = 52$

Bc

5

Soprano

ff

10

5

Soprano

ff

18

7

Soprano

ff

29

5

4

3

ff

ff

47

4

f

57

Soprano

6

ff

68

ff

tr.

5

2 Violin for Soprano Solo bwv 185.1 s4(3)

Quartets (Trios) from Cantata 185.1

LET VOICE SOLO PARTS ALWAYS PREDOMINATE

J. S. Bach [arr. P. Lang] BWV 185.1

Aria Duett for Oboe or Tromba, Soprano, Alto and Bc " Barmherziges Herze"

arr. in 4 (3) parts: 1.Violin or Oboe (optional), 2(1). Violin or Viola,

3(2). Viola or Cello, 4(3). Cello

$\text{♩} = 52$

Bc *tr* *tr* *tr* *mf*

6 *tr*

11 *mp* *f*

17 3 *Tenor* *f*

25 *p*

30 *mp* *mf*

35 *f*

39 *f*

43

48

53

59

64

69

4

2 Viola for Soprano Solo bwv 185.1 s4(3)

Quartets (Trios) from Cantata 185.1

LET VOICE SOLO PARTS ALWAYS PREDOMINATE

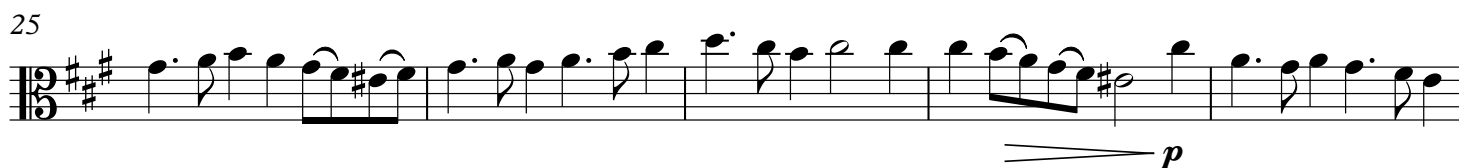
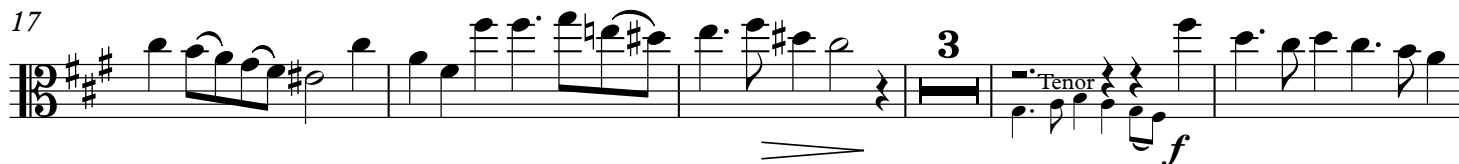
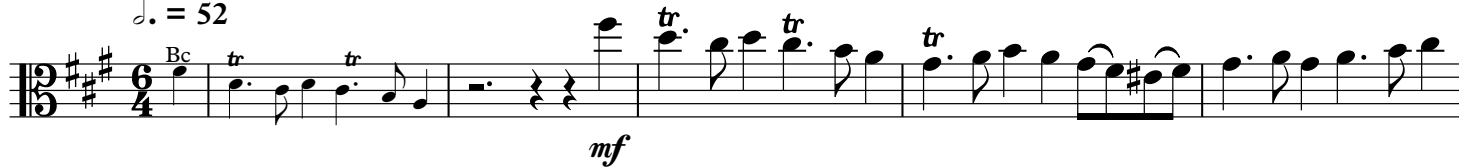
J. S. Bach [arr. P. Lang] BWV 185.1

Aria Duett for Oboe or Tromba, Soprano, Alto and Bc " Barmherziges Herze"

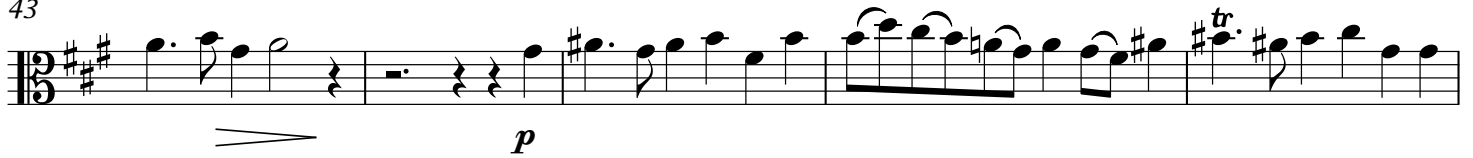
arr. in 4 (3) parts: 1.Violin or Oboe (optional), 2(1). Violin or Viola,

3(2). Viola or Cello, 4(3). Cello

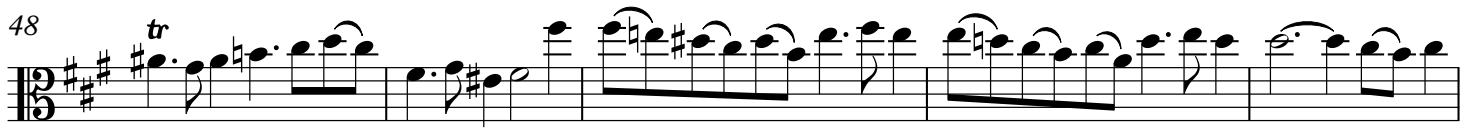
♩. = 52



43



48



53



59



64



69



3 Viola for Tenor Solo bwv 185.1 s4(3)

Quartets (Trios) from Cantata 185.1

LET VOICE SOLO PARTS ALWAYS PREDOMINATE

J. S. Bach [arr. P. Lang] BWV 185.1

Aria Duett for Oboe or Tromba, Soprano, Alto and Bc " Barmherziges Herze"

arr. in 4 (3) parts: 1.Violin or Oboe (optional), 2(1).Violin or Viola,

3(2).Viola or Cello, 4(3). Cello

$\text{♩} = 52$

2

f

7

p *mp*

12

f

16

21

f

26

p

31

mp *mf*

36

f *f*

41

p

45



49



54



59



64



69



3 Violoncello for Tenor Solo bwv 185.1 s4(3)

Quartets (Trios) from Cantata 185.1

LET VOICE SOLO PARTS ALWAYS PREDOMINATE

J. S. Bach [arr. P. Lang] BWV 185.1

Aria Duett for Oboe or Tromba, Soprano, Alto and Bc " Barmherziges Herze"

arr. in 4 (3) parts: 1. Violin or Oboe (optional), 2(1). Violin or Viola,

3(2). Viola or Cello, 4(3). Cello

$\text{♩} = 52$



7



12



16



21



26



31



36



41





4 Violoncello for Bc bwv 185.4 s4(3)

Quartets (Trios) from Cantata 185.1

LET VOICE SOLO PARTS ALWAYS PREDOMINATE

J. S. Bach [arr. P. Lang] BWV 185.1

Aria Duett for Oboe or Tromba, Soprano, Alto and Bc " Barmherziges Herze"

arr. in 4 (3) parts: 1.Violin or Oboe (optional), 2(1).Violin or Viola,

3(2). Viola or Cello, 4(3). Cello

$\text{♩} = 52$

tr *tr* *tr* *tr*

mp

5

8

p

11

mp

14

f

17

f

20

tr *tr* *tr* *tr*

f

24

27

p

30

mp

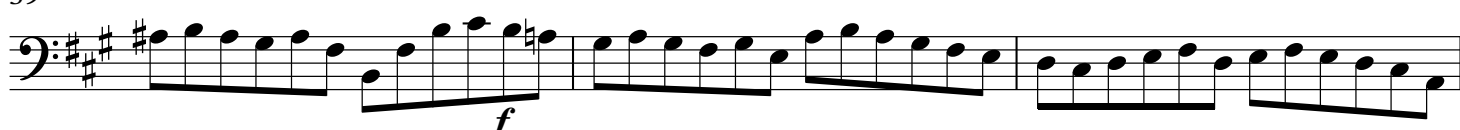
33

mf

36



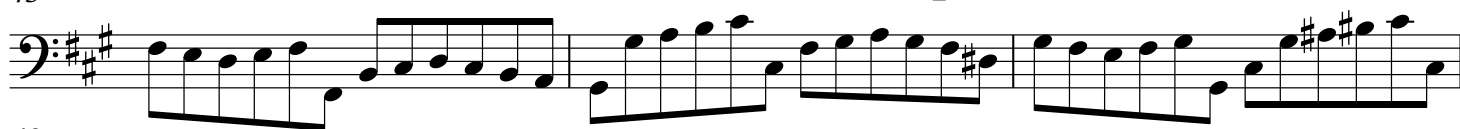
39



42



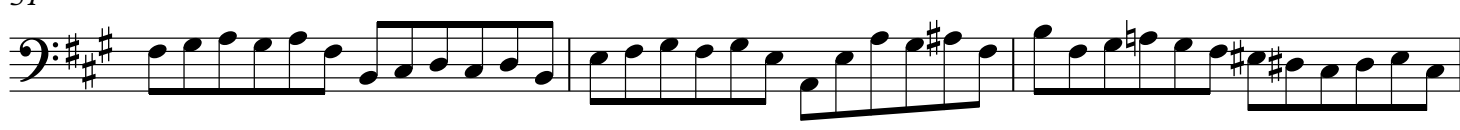
45



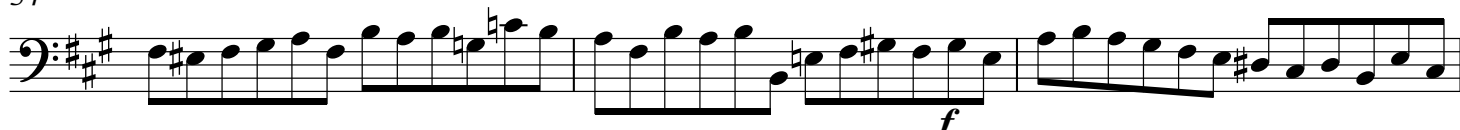
48



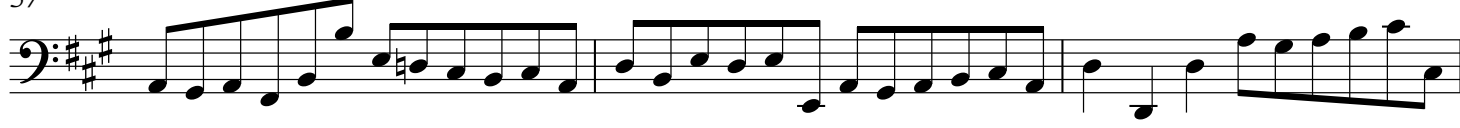
51



54



57



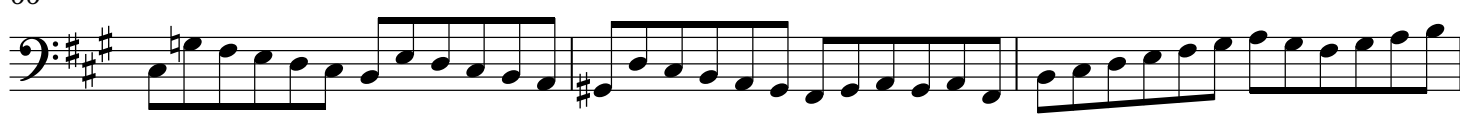
60



63



66



69



72

