

Violoncello

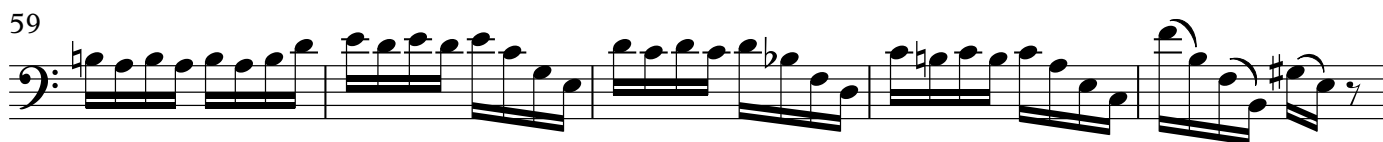
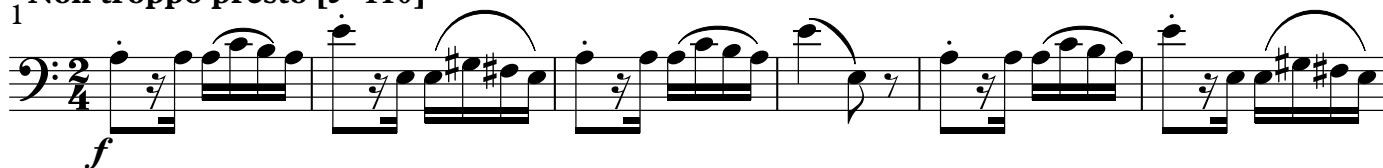
Variations on a theme of Paganini

Set 1

Brahms/Johnson

Thema

1 Non troppo presto [$\text{♩} = 110$]



64 **Var. 3** pizz. *f*

70

76

82

88 **Var. 4** $\text{♩} = \text{♩}$ 2 arco *mp*

93 *mf* tr

97 8 *mf* tr

108 tr

112 **Var. 5** $\text{♩} = \text{♩}$ *p* 2 2 2

116 2 2 2 2 2 3

Violoncello

123

2 2 2 2 2 2 2 2 2 2 2 2

130 1. 2. Var. 6 4 8 Var. 7

The musical score for 'The Rose Tree' is written on a single staff with a 13/8 time signature. It begins with a treble clef and a key signature of one sharp (F#). The first section, labeled '1.', consists of a quarter note G4, a quarter note A4, and a quarter note B4, followed by a repeat sign. The second section, labeled '2.', consists of a quarter note G4, a quarter note A4, and a quarter note B4. This is followed by a double bar line and the label 'Var. 6'. The next section is a 4-measure rest, followed by an 8-measure rest. This is followed by a double bar line and the label 'Var. 7'. The final section consists of a quarter note G4, a quarter note A4, a quarter note B4, a quarter note C5, a quarter note B4, a quarter note A4, and a quarter note G4, all beamed together. The piece ends with a fermata over the final G4. The tempo is marked 'Allegretto' and the dynamics are 'f' (forte).

145

145

151

151

157

1. 2.

162 **Var. 8** **9** **8** **Var. 9**

f *pp* *fp*

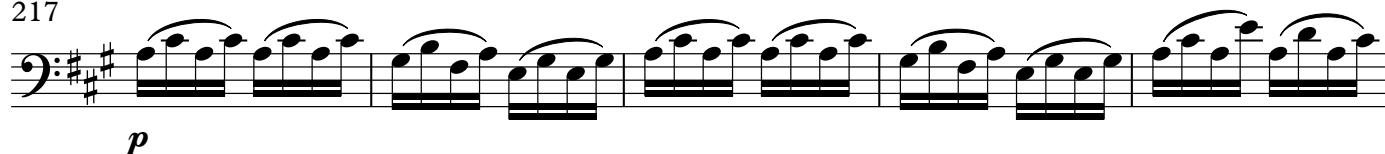
184

6 1. 2. rit. Var. 10

mp

199

[illegible]

Var. 11
217

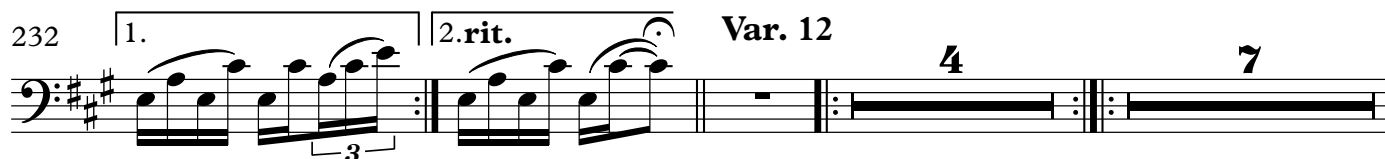
222



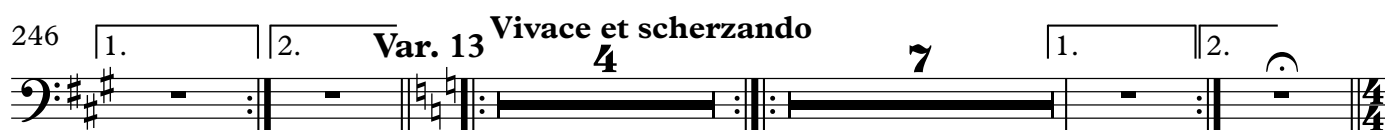
227



232



246



261

Var. 14
Allegro

266



269

