

# *Venus bant*

## Bologna Q 18, f. 61v-62r

Edited by Clemens Goldberg

(Tenor)

(Contratenor)

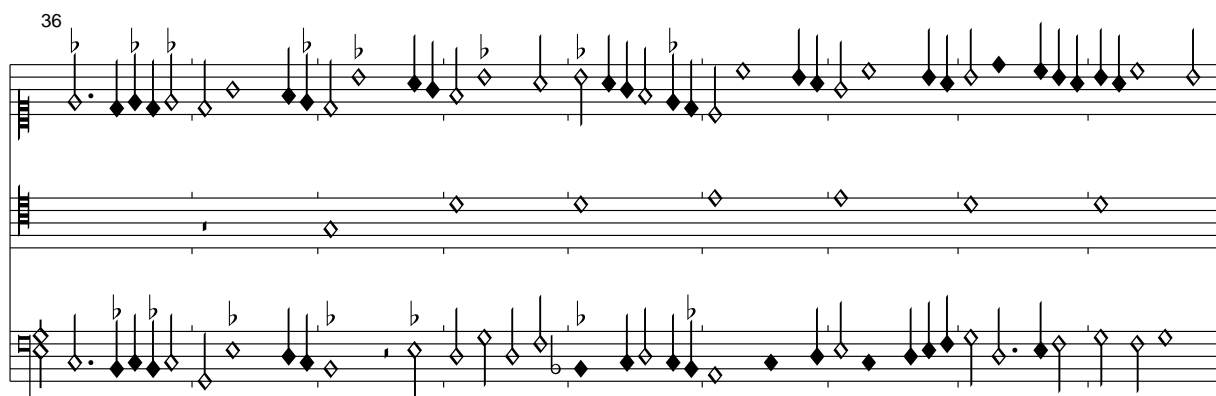
1

9

18

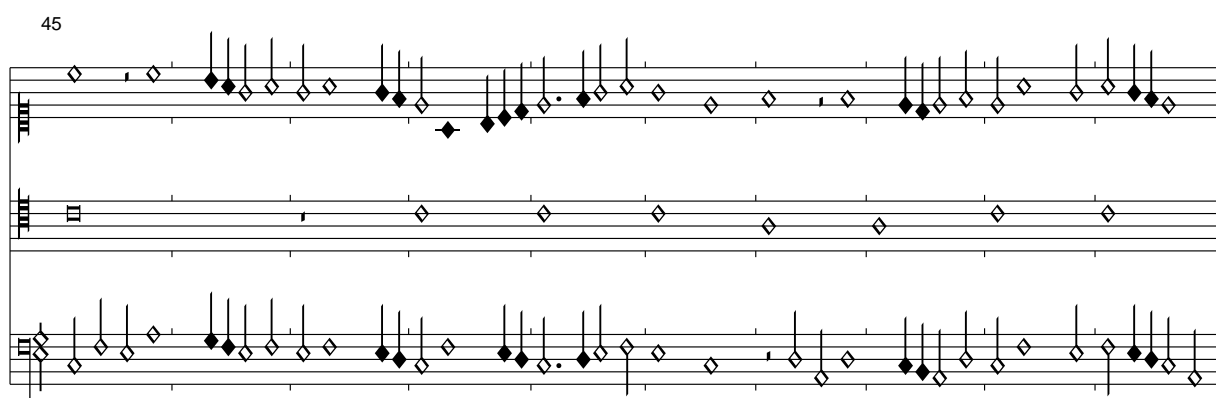
27

36



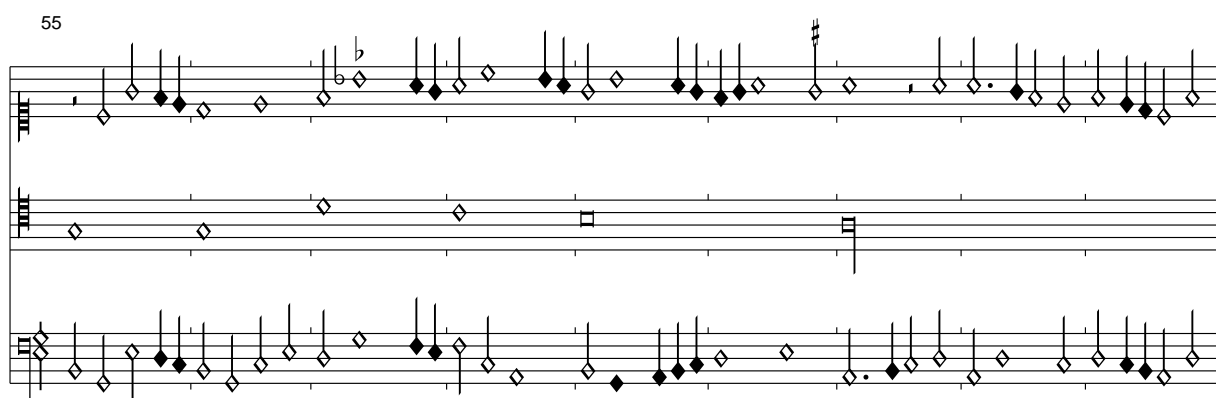
Three staves of musical notation. The top staff contains a series of diamond-shaped notes with stems, some marked with a flat (b). The middle staff contains diamond-shaped notes, some marked with a flat (b). The bottom staff contains diamond-shaped notes, some marked with a flat (b). The notation is dense and rhythmic.

45



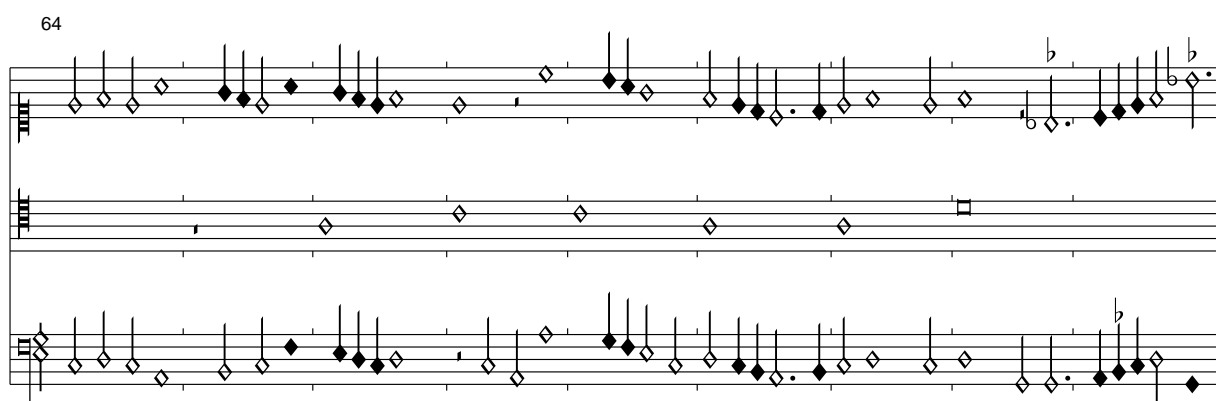
Three staves of musical notation. The top staff contains a series of diamond-shaped notes with stems, some marked with a flat (b). The middle staff contains diamond-shaped notes, some marked with a flat (b). The bottom staff contains diamond-shaped notes, some marked with a flat (b). The notation is dense and rhythmic.

55

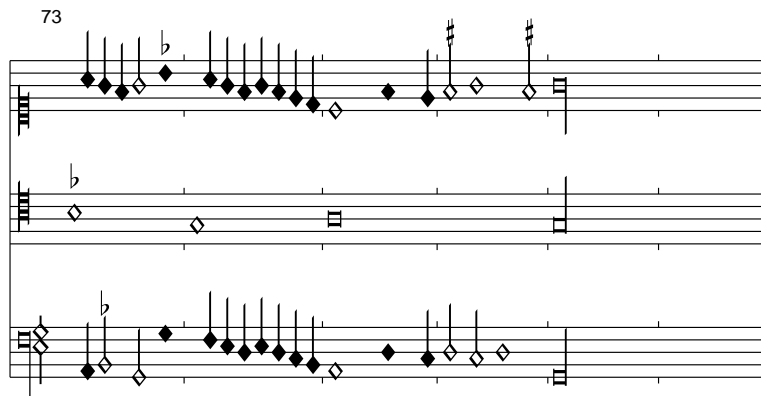


Three staves of musical notation. The top staff contains a series of diamond-shaped notes with stems, some marked with a flat (b). The middle staff contains diamond-shaped notes, some marked with a flat (b). The bottom staff contains diamond-shaped notes, some marked with a flat (b). The notation is dense and rhythmic.

64



Three staves of musical notation. The top staff contains a series of diamond-shaped notes with stems, some marked with a flat (b). The middle staff contains diamond-shaped notes, some marked with a flat (b). The bottom staff contains diamond-shaped notes, some marked with a flat (b). The notation is dense and rhythmic.



Diese zweite Bearbeitung ist gänzlich von der vorangehenden verschieden. Die Melodie liegt in doppelten Werten im Tenor und wird durch zunehmende Konflikte der Musica ficta sogar in diese hineingezogen. Man kann fast von einem Probe-Improvisationsstück über diese Konflikte sprechen.