

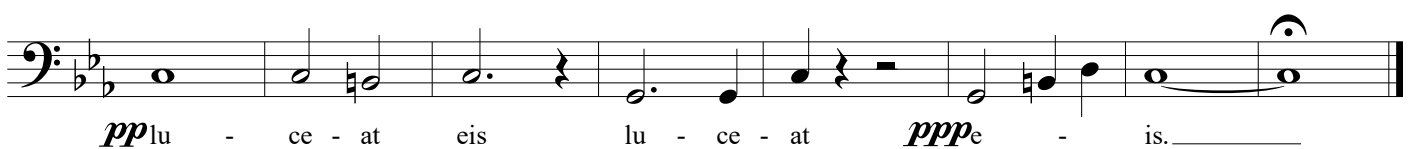
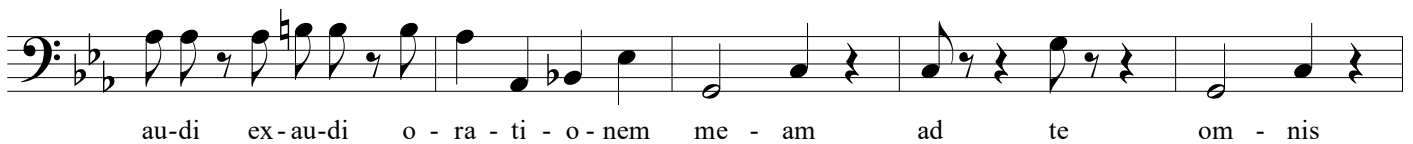
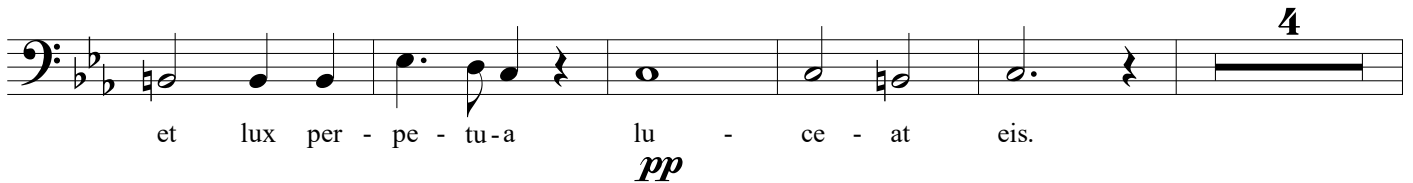
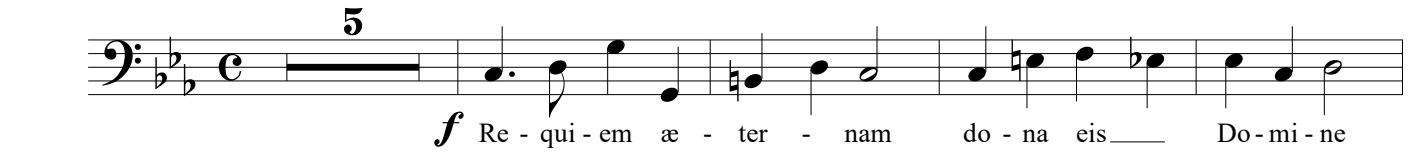
Bass

# I - Introito

## Requiem Mass

Rafael Sales Arantes (1980 - )

Composto de 03/09/03 a 31/12/04

**Andante**

# Kyrie

Bass

## Requiem Mass

Rafael Sales Arantes (1980 - )

Composto de 03/09/03 a 31/12/04

Moderato

*f* Ky - ri - e e - lei - son! Ky - ri - e e - lei - son! Ky - ri - e e - lei -

son! *mf* Ky - ri - e e - lei - son! Ky - ri - e e - le - i - son Ky - ri -

e e - lei - son! e - lei - son! Ky - ri - e - lei - son! *p* e - le - i -

son! e - le - i - son e - le - i - son e -

lei - son *f* Ky - ri - e e - lei - son Ky - ri - e e -

lei - son! Ky - ri - e e - lei - son! Ky - ri - e e - lei - son! Ky -

- ri - e e - le - i - son! Ky - ri - e e - lei - son! Ky - ri - e e - le - i - son

e - le - i - son!

# Gradual

Bass

## Requiem Mass

Rafael Sales Arantes (1980 - )  
Composto de 03/09/03 a 31/12/04

Andante

*cresc.*

*p* Re - qui-em æ - ter - nam do-na e - is Do - mi - ne *f* et

lux per - pe - tu-a lu - ce - at eis. In me-mo - ria æ -

**2**

ter - na e - rit jus - tus jus - tus e - rit

jus - tus In me - mo - ri-a æ - ter - na e - rit jus - - -

tus *pp* ab au - di - tio - ne ma - la

non ti - me - bit non ti - me - - bit.

Bass

# Tractus

## Requiem Mass

Rafael Sales Arantes (1980 - )

Composto de 03/09/03 a 31/12/04

**Adagio** ♩ = 40

**4**

**Solo**

**Tutti**

*p* Ab - sol - ve, Do - mi - ne, a - ni - mas — fi - de - li - um *f* a - ni - mas fi -

de - li - um de - fun - cto - rum. Do - mi - ne a - ni - mas fi -

**4**

de - li - um. ab om - ni vin - cu - lo de - li - cto - rum

**11**

**Tutti**

*f* et - lu - cis æ - ter - næ

be - a - ti - tu - di - ne per - frui.

**4**

Bass

# Sequentia

## Requiem Mass

Rafael Sales Arantes (1980 - )  
Composto de 03/09/03 a 31/12/04

**Allegro**

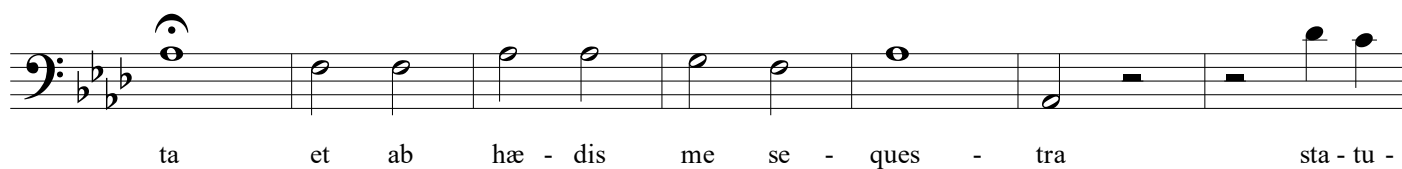
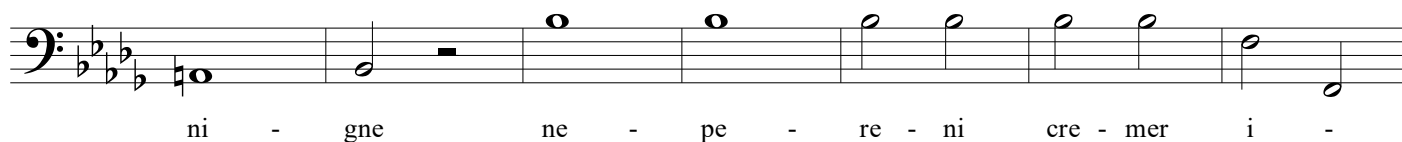
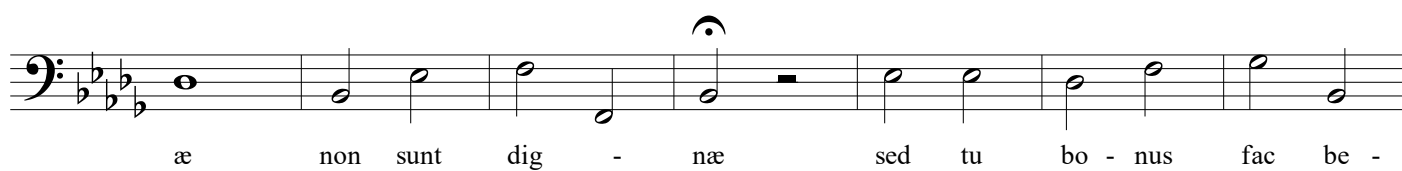
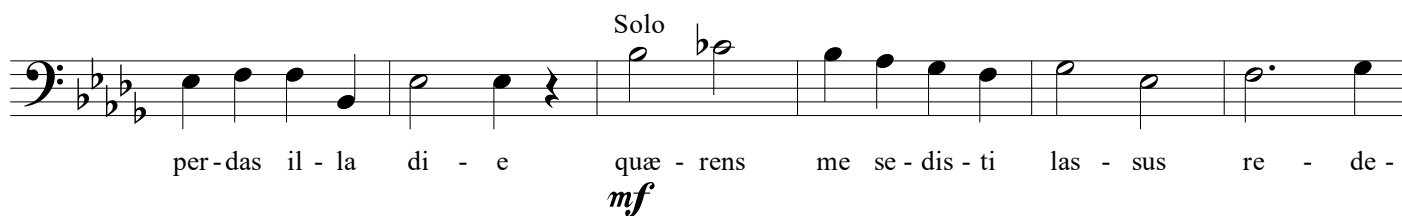
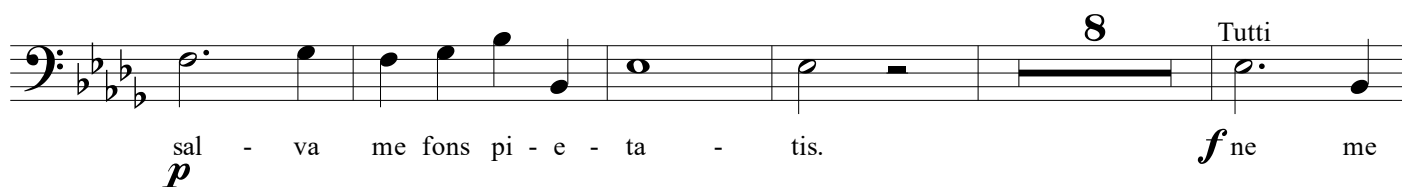
***ff*** Di - es i - ræ di - es il - la sol - vet sæ-clum in fa -  
vi - la tes - te Da - vid cum Si - byl - la. ***mp*** Quan - tus tre-mor est fu -  
tu - rus quan - do ju-dex est ven - tu - rus ***f*** cun - cta stri-cte dis-cus -  
su-rus. Tu - ba mi - rum spar - gens so - num per se -  
pul-cra re-gi - o-num co - get om-nes an-te thro-num.

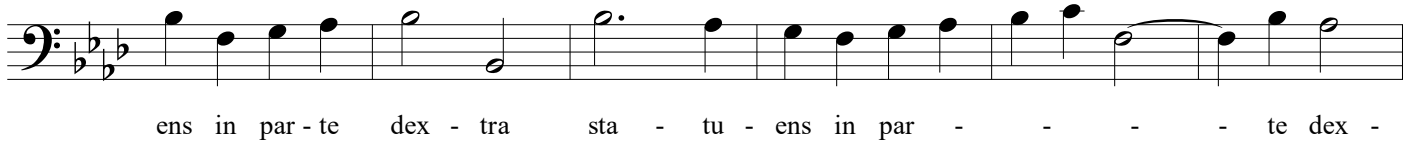
**Andante**  
Solo

***p*** Mors stu-pe-bit et na - tu - ra cum re-sur-get cre - a - tu - ra ju - di -  
can-ti res-pon-su - ra cum vix jus - tus sit se - cu - rus?

**Allegro assai**

***ff*** Rex tre - men-dæ ma - jes - ta - tis qui sal -  
van-dos sal - vas gra - tis sal - va me sal - va me  
***mf***

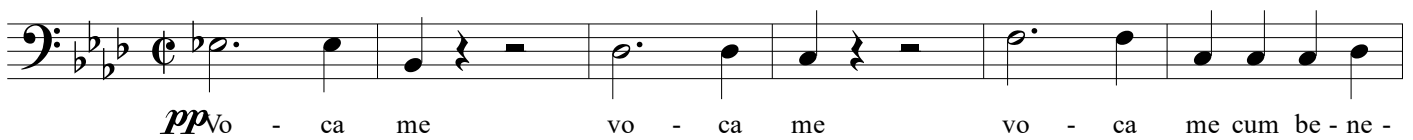




**Allegro** ♩ = 110



**Largo** ♩ = 30

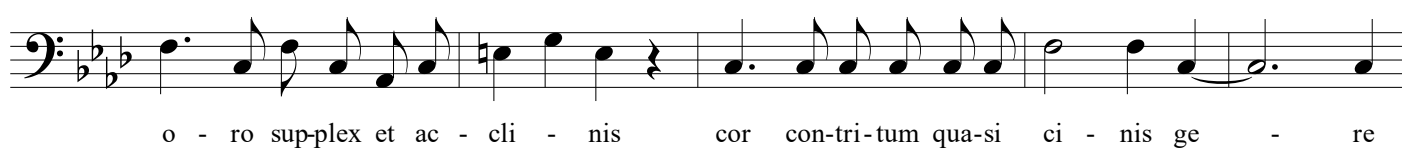
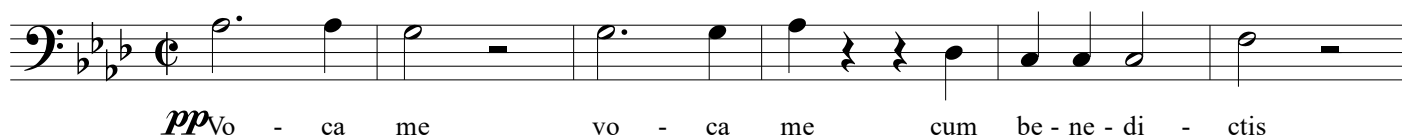


**Allegro** ♩ = 110





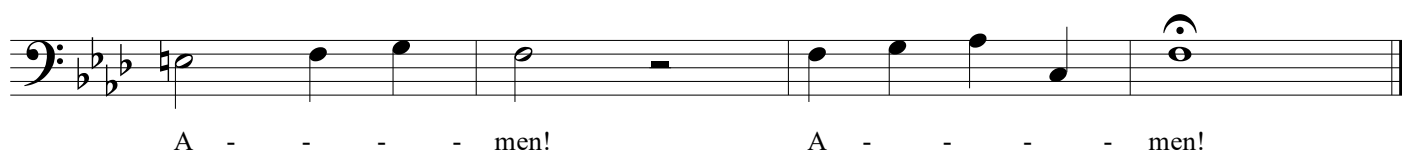
**Largo**  $\text{♩} = 30$



**Andante**  $\text{♩} = 60$



*rit.*





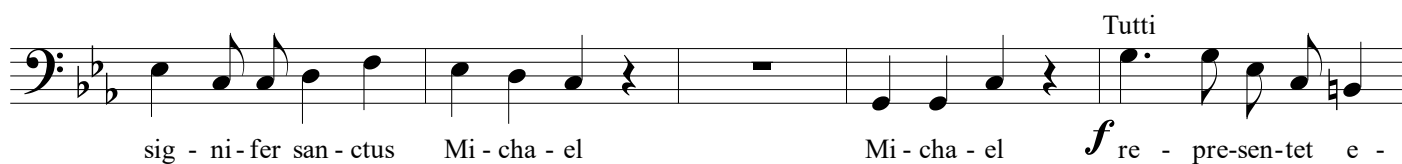
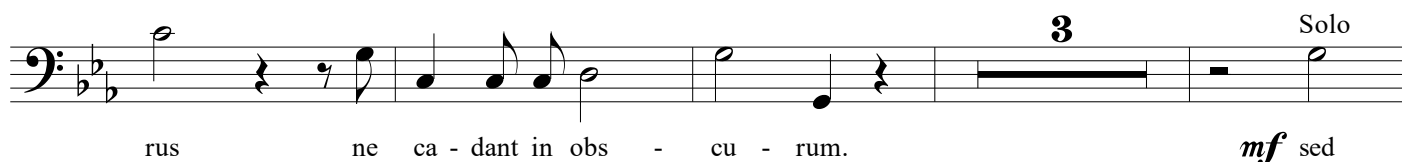
# Ofertorium

Bass

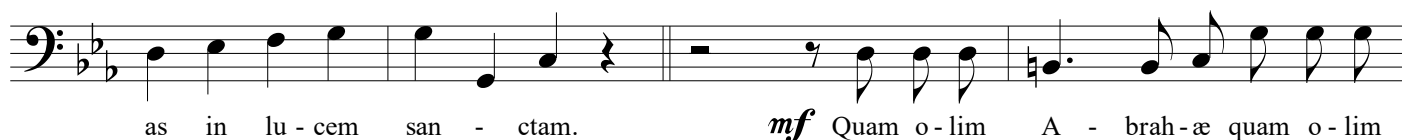
## Requiem Mass

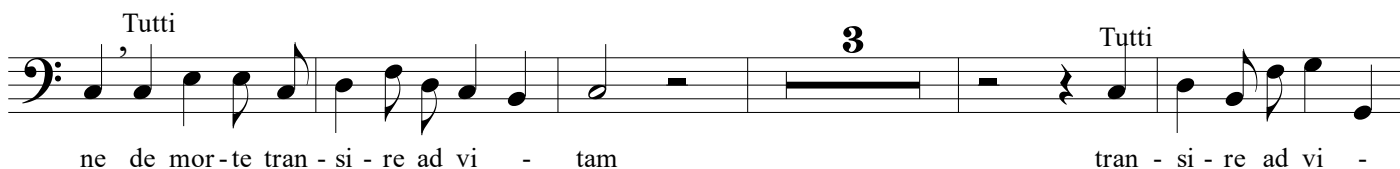
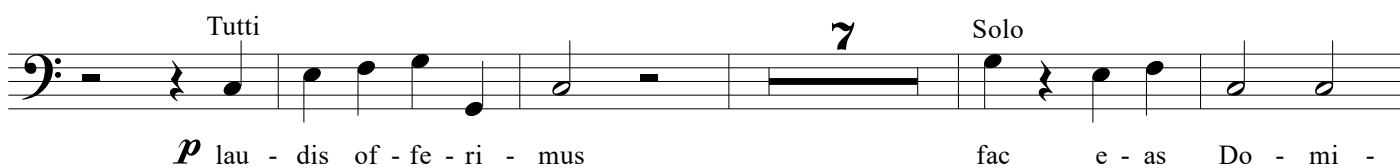
Rafael Sales Arantes (1980 - )  
Composto de 03/09/03 a 31/12/04

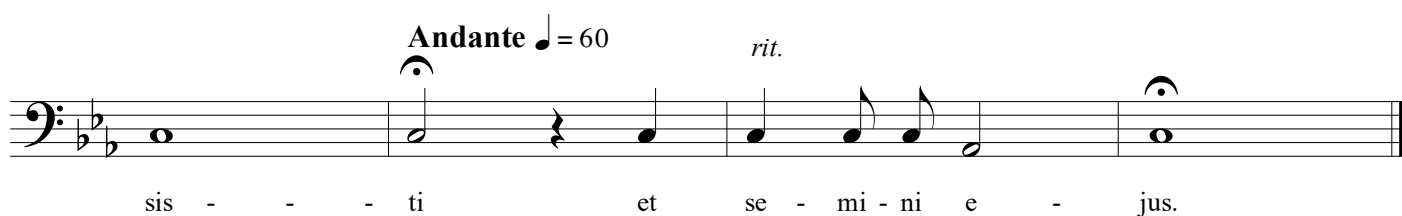
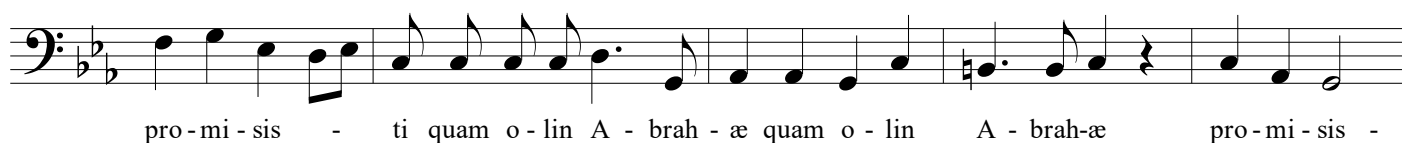
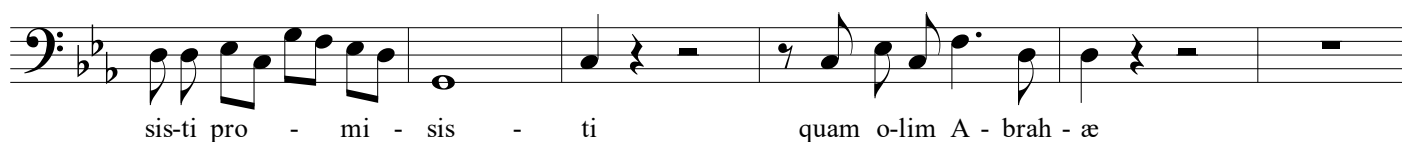
**Allegro assai** ♩ = 110



**Allegro assai** ♩ = 110







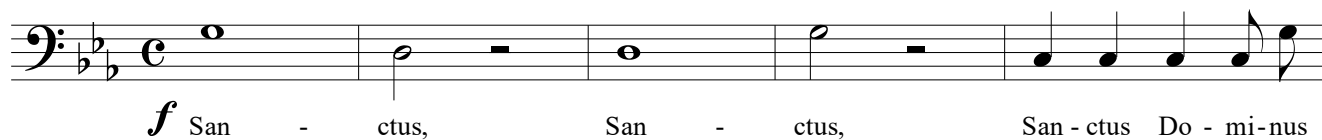
Bass

# Sanctus

## Requiem Mass

Rafael Sales Arantes (1980 - )  
Composto de 03/09/03 a 31/12/04

Andante  $\text{♩} = 60$



Vivo  $\text{♩} = 130$

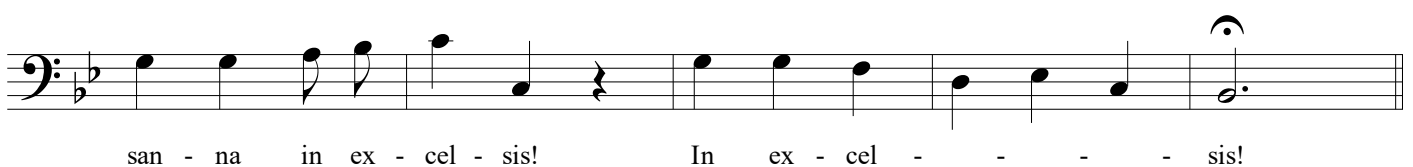


Lento  $\text{♩} = 30$





**Vivo** ♩ = 130



Bass

# Agnus Dei

## Requiem Mass

Rafael Sales Arantes (1980 - )  
Composto de 03/09/03 a 31/12/04

Andante ♩ = 60



# Comunio

15

Bass

## Requiem Mass

Rafael Sales Arantes (1980 - )

Composto de 03/09/03 a 31/12/04

Andante cantabile ♩ = 60

8 14

*mf* Lux ae - ter - na lu - ce - at

e - is, Do-mi - ne, Do-mi - ne. Cum San-ctis tu - is in ae - ter - num

5

qui - a pi - us es. *f* Re - qui-em æ - ter - nam do - na eis

Do - mi - ne et lux per - pe - tu - a *pp* lu - ce - at eis.

Cum san-ctis tu - is in ae - ter - num *ppp* ui - a pi - us es.

Bass

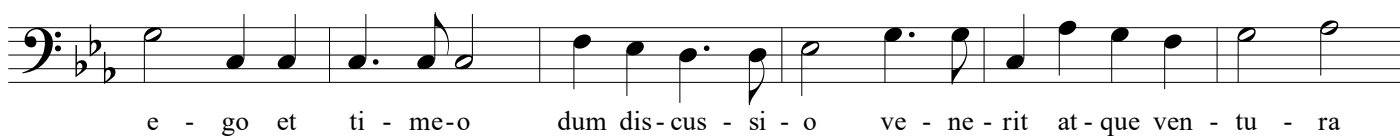
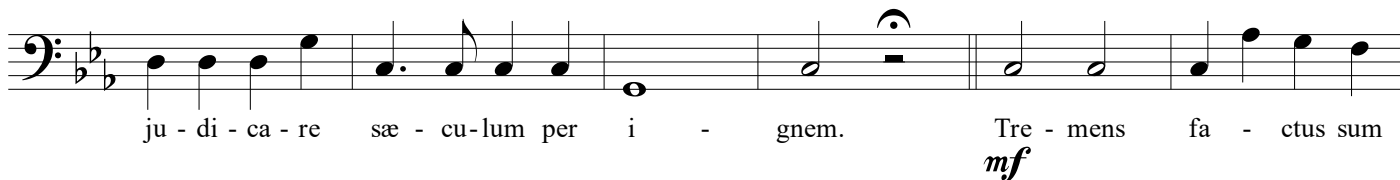
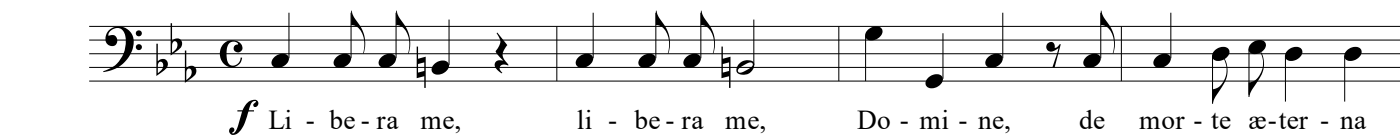
# Libera me, Domine

## Requiem Mass

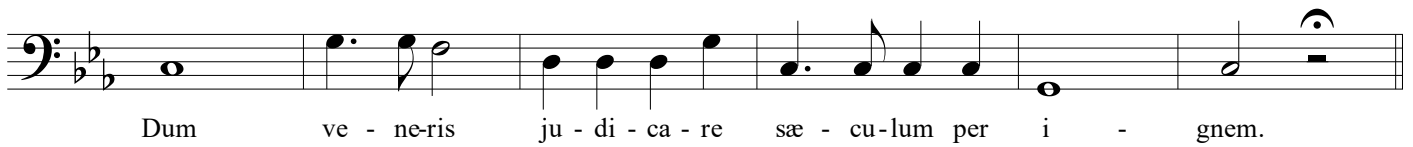
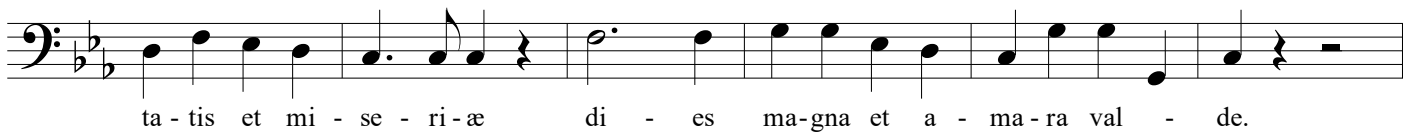
Rafael Sales Arantes (1980 - )

Composto de 03/09/03 a 31/12/04

Allegro ♩ = 120







**Andante** ♩ = 60



**Allegro** ♩ = 120

