

Cello

Sonata Opus 5 nr 5

A. Corelli
Arr. G.H.Kruithof

Adagio

6

10

Vivace

13

22

29

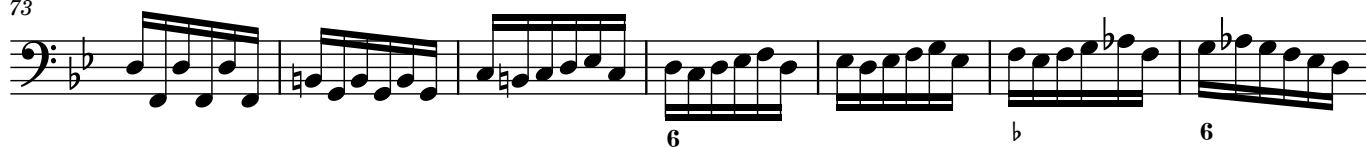
40

53

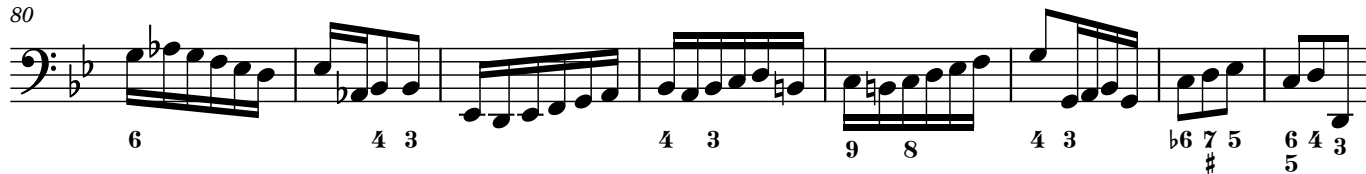
65

2

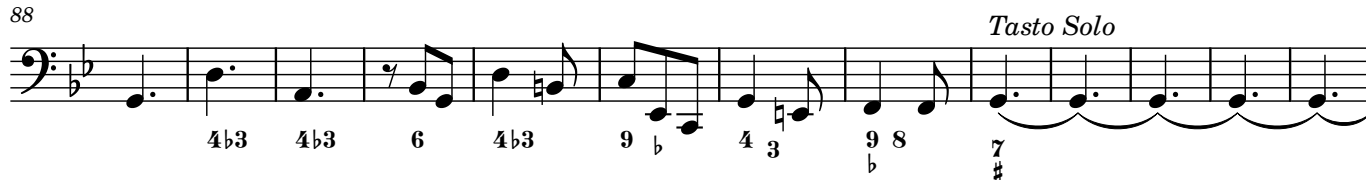
73



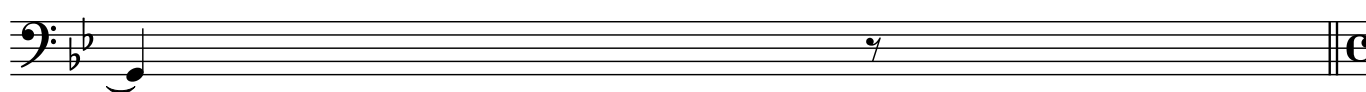
80



88

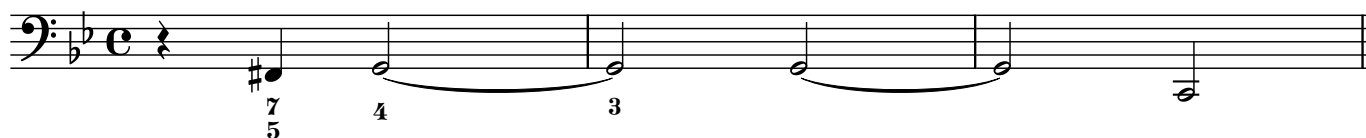


101



102

Adagio



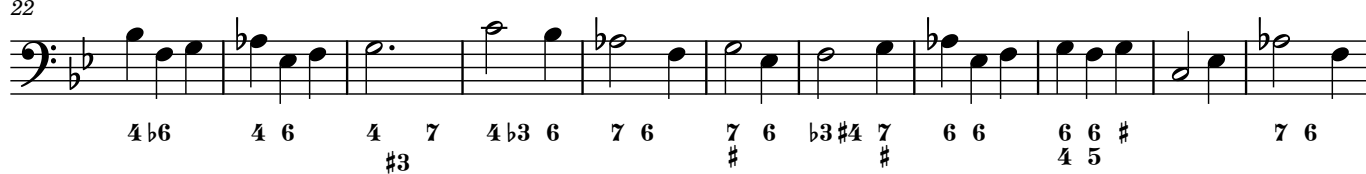
Adagio



11



22



33



Vivace

10

20

29

42

55

66

72

79

86

6 # 6 4 3 5

6 b3 6 6 4 3 5

6 b3 #4 6 4 3 # 7 6 # #

6 # 6 7 3 5 # b3 6 6 #4

4 3 5 # 6 b3 6 6 4 #3

#

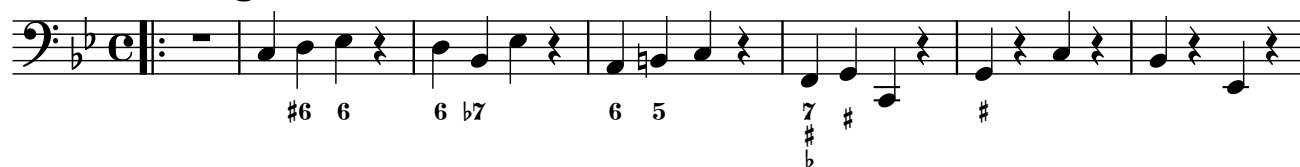
b b b

4 3 b b

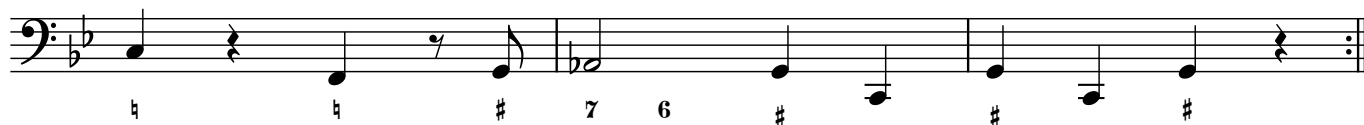
4 3

4

Giga



8



11



18



26

