

Violoncello

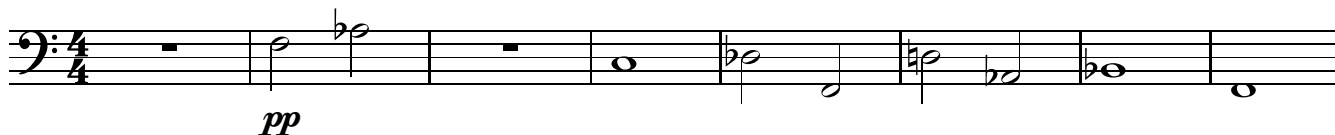
Peter Dyson

Home Music  
4 X 4

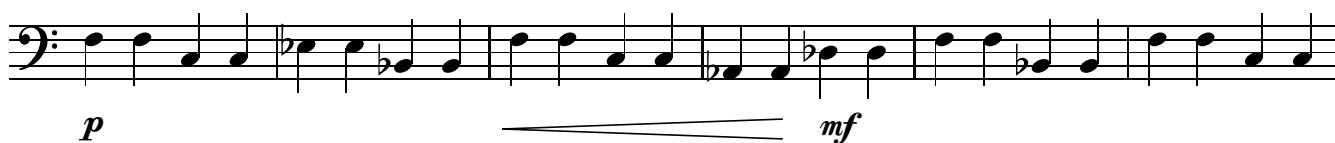


## I.

Very smoothly (♩ = 65)



9



15



21



26

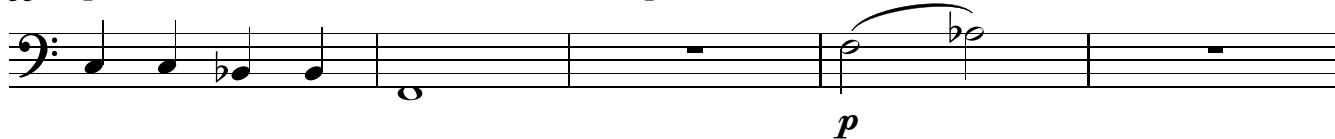


30

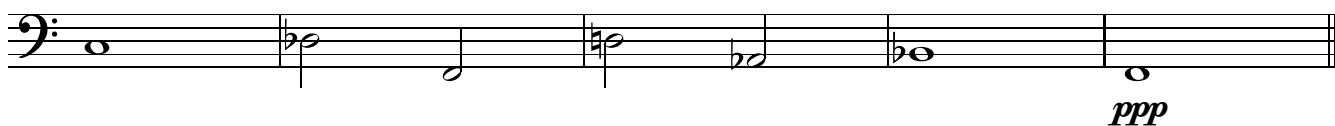


33 poco rit.

a tempo



38



## II.

I Jauntily (♩ = 140)

12



19



27



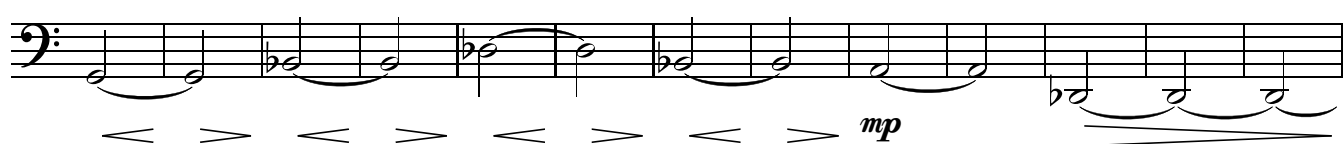
35



48



56



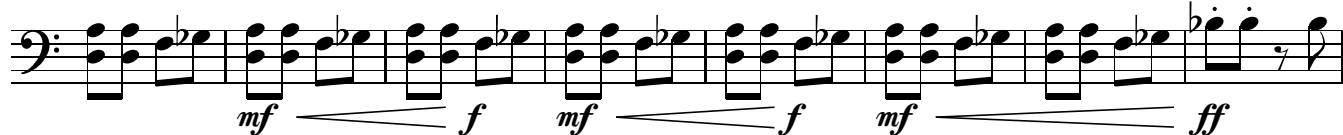
69



77



85



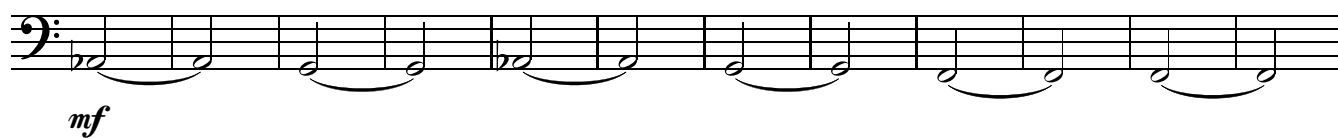
93



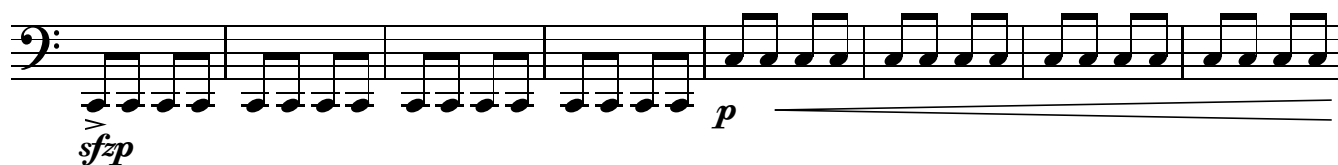
103



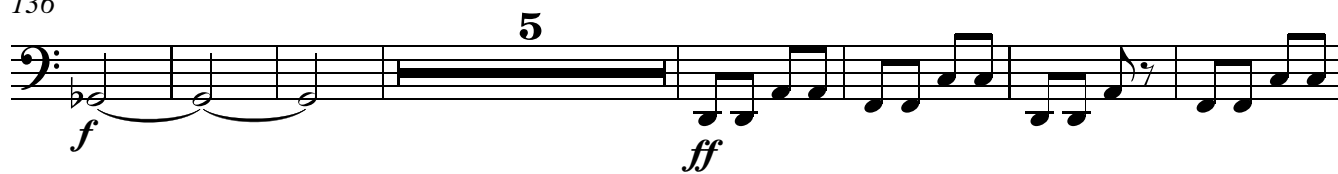
116



128



136



148



152

rit. . . . .



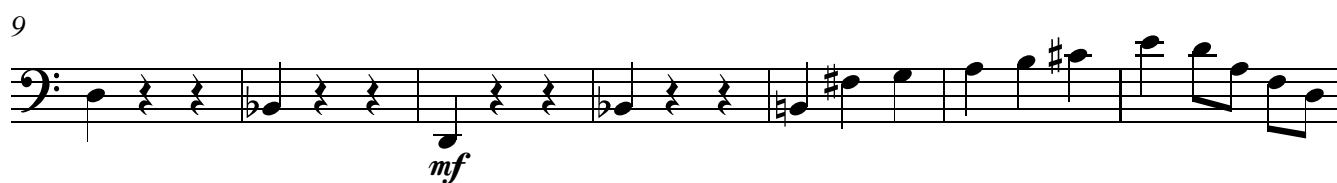
## III.

Reflectively (♩ = 120)

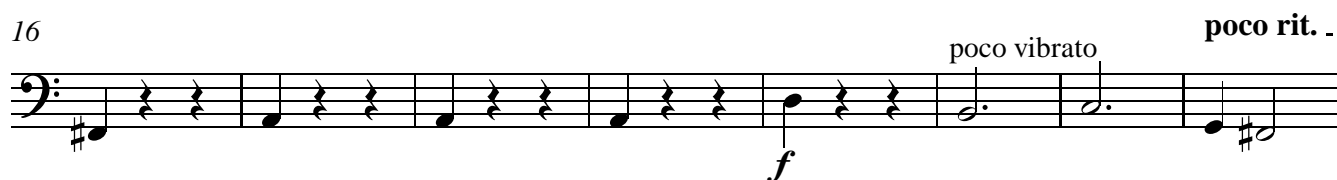
1 pizz. *pp*



9 *mf*



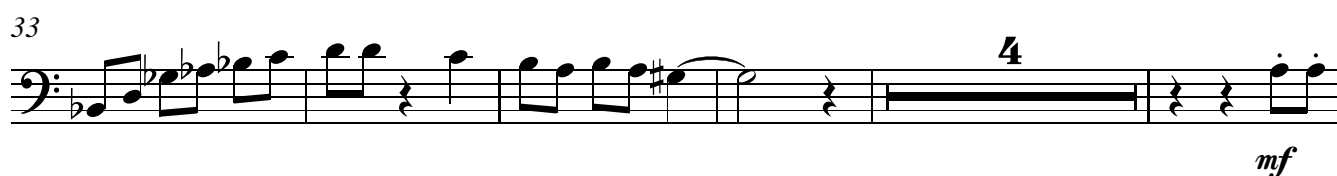
16 poco vibrato poco rit. *f*



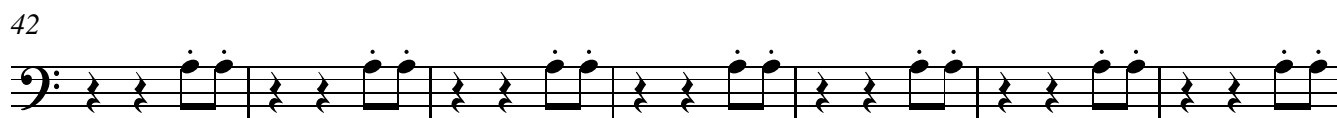
24 - A tempo *f*



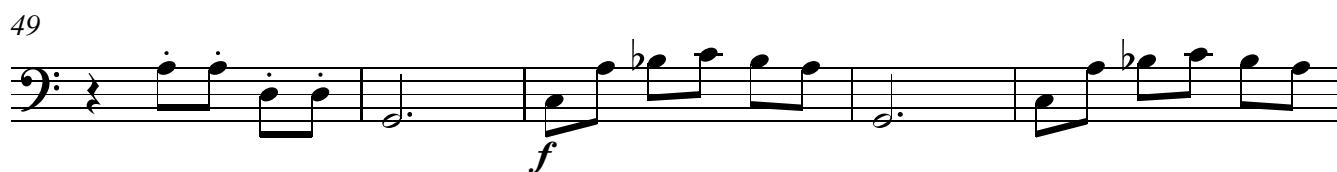
33 *mf*



42



49 *f*



54 *mf*



61 poco rit. poco rit. a tempo

69

*p*

*pp*

## IV.

1 Rhythmically (♩ = 140)

arco

*p*

7

*f*

13

19

*mf*

*mf*

25

*f*

*mf*

*p*

31

*f*

*p*

*f*

*p*

36

*p*

*fp*

*fp*

41

*fp*

45

*fp*



50 **8** poco rit. a tempo **2**

64 *p*

71 *f*

77 *V*

80 *ff* *p*

Detailed description: The musical score is for a cello part. It begins at measure 50 with a whole rest, followed by a measure with a whole note. Above the staff, there are markings '8' and '2' with a 'poco rit.' (slightly ritardando) and 'a tempo' (return to tempo) instruction. The key signature has one flat (B-flat). The score continues with various rhythmic patterns, including eighth and sixteenth notes, and rests. Dynamic markings include *p* (piano), *f* (forte), *ff* (fortissimo), and *p* (piano). There are also markings for *V* (violin) and *V* (viola) above the staff. The score ends at measure 80 with a double bar line.