

Tuba

Concerto stilizzato

paraphrase on a motif by Brahms

PARTE PRIMA: "CADENZA"

Adagio $\text{♩} = 60$ Cadenza Tamás Beischer-Matyó

22 25 2 30

ppp *ff* *ff*

PARTE SECONDA: "FORMA-SONATA"

poco rall. . . Poco sostenuto Allegro con brio $\text{♩} = 180$ ($\text{♩} = 60$)

35 40 6 Hn. 1-2

ff *pp* *p* poco a poco cresc.

50 55 3 17

ff *pp* *p* poco a poco cresc.

mf *f* *mf* *f*

Copyright Tamás Beischer-Matyó, 1996

www.beischermatyó.hu/concerto_stilizzato

This work is licensed under the Creative Commons Attribution-NonCommercial-NoDerivatives 4.0 International License.
To view a copy of this license, visit www.creativecommons.org/licenses/by-nc-nd/4.0/

Tbn. **f** **f** **sf** **p** **mf** **p** **mf** **p**

85 Tbn. 2-3

90 **mf** **f**

8

poco ritard. . . Sostenuto $\text{♩} = 48$ ($\text{♩} = 144$)

95 **ff** grandioso

allarg. a tempo $\text{♩} = 60$ ($\text{♩} = 180$)

100

105 poco ritard. a tempo

poco ritard. a tempo

110 Bsn., Tbn.

115 **f**

120 **pp**

125

130 lunghissima

molto rall. a tempo

135 Tpt. 3
ten. ten.

ff *p*

140 145 *pp* *mf* *rall.*

Meno allegro ♩ = 120

(senza rall.) accel. . . . al ♩ = 180 (a tempo)

13 160 Hn. 1 *pp* *ppp* *f*

165 175 *ff*

180 [1] [2] [3] [4] [5]

PARTE TERZA: "LIED"

subito Adagio molto ♩ = 60 (♩ = ♩)

allargando

185 205 6 2 10 2

a tempo

210 2 4

molto rall.

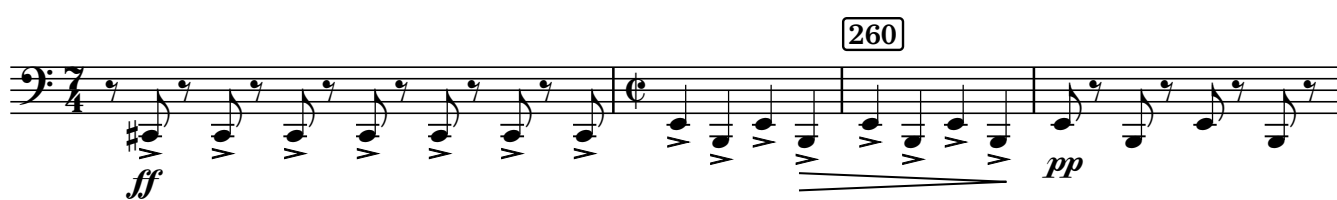
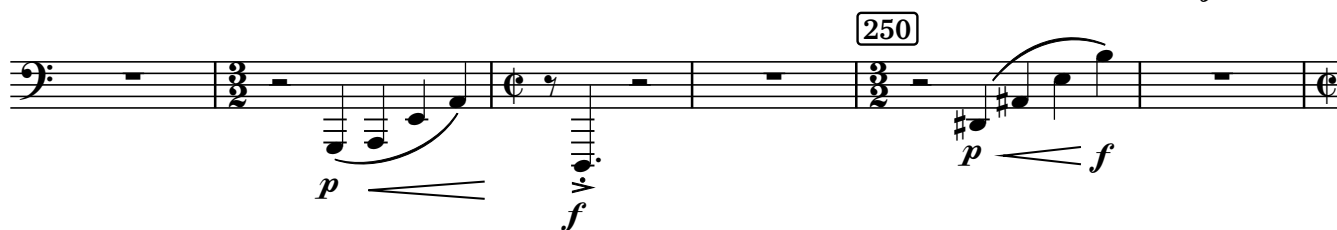
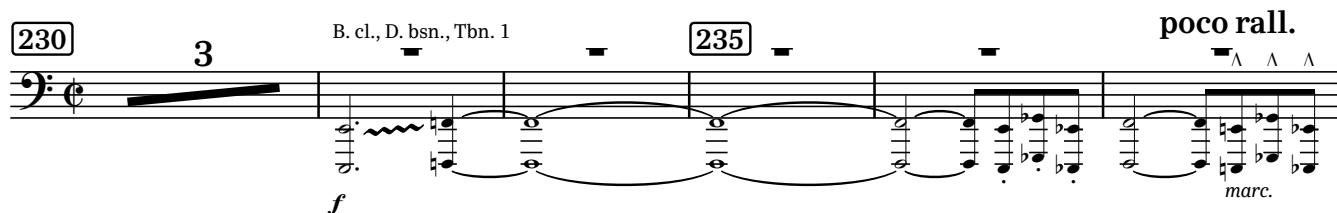
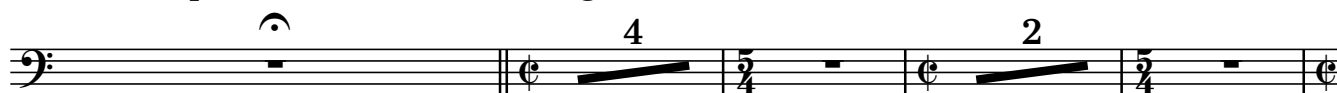
più adagio e molto flessibile ♩ = 48 poco a poco allarg.

220

PARTE QUARTA: "RONDÒ"

a tempo (♩ = 48) rall.

Allegro vivace (♩ = 180 (♩ = 90))



270 Tpt. 1 *p* pochiss.

275 pochiss. *tutta forza*

280 3 3 3 5

290 2 Tbn. 1 *p* Tbn. 2 *p* 295 *p* *f* 12

310 Tpt. 1-2 *ff* *ff* flutt. ord.

rall. Meno vivace ♩ = 144

flutt. ord. flutt. ord. flutt. 315 4 Hn. 320

ord. 325 *p* *ff* *sub. p*

330 8 340 rall. a tempo 4

345 Hn., Tpt. *ff* 3 3 3 3

rall.

355

[illegible]

The musical score for the bass line of 'The Rose Tree' is shown. It begins with a treble clef and a key signature of one sharp (F#). The melody starts on a whole note G4, followed by a half note A4, and then a quarter note B4. The tempo is marked 'Allegretto' and the time signature is 3/4. The score includes a repeat sign and a first ending bracket. The piece concludes with a double bar line and a repeat sign.

375

Musical score for Exercise 375, featuring a single staff in bass clef with a key signature of one sharp (F#). The melody consists of eighth notes and rests across five measures.

380 poco rall. - - Sostenuto $\text{♩} = 48$ ($\text{♩} = 144$)



ff *grandioso*

allarg. - - - a tempo ♩ = 180

PARTE QUINTA: “CONCLUSIONE”

390 **rall. molto** **2** **a tempo** ♩ = 180 395

fff *sf* *sf* *sf*

410

Exercise 410 is a short piece in bass clef, 3/4 time. The melody is written on a single staff. It begins with a quarter note G2, followed by eighth notes A2, B2, C3, D3, E3, F3, G3, A3, B3, C4, D4, E4, F4, G4, A4, B4, C5, D5, E5, F5, G5, A5, B5, C6, D6, E6, F6, G6, A6, B6, C7, D7, E7, F7, G7, A7, B7, C8, D8, E8, F8, G8, A8, B8, C9, D9, E9, F9, G9, A9, B9, C10, D10, E10, F10, G10, A10, B10, C11, D11, E11, F11, G11, A11, B11, C12, D12, E12, F12, G12, A12, B12, C13, D13, E13, F13, G13, A13, B13, C14, D14, E14, F14, G14, A14, B14, C15, D15, E15, F15, G15, A15, B15, C16, D16, E16, F16, G16, A16, B16, C17, D17, E17, F17, G17, A17, B17, C18, D18, E18, F18, G18, A18, B18, C19, D19, E19, F19, G19, A19, B19, C20, D20, E20, F20, G20, A20, B20, C21, D21, E21, F21, G21, A21, B21, C22, D22, E22, F22, G22, A22, B22, C23, D23, E23, F23, G23, A23, B23, C24, D24, E24, F24, G24, A24, B24, C25, D25, E25, F25, G25, A25, B25, C26, D26, E26, F26, G26, A26, B26, C27, D27, E27, F27, G27, A27, B27, C28, D28, E28, F28, G28, A28, B28, C29, D29, E29, F29, G29, A29, B29, C30, D30, E30, F30, G30, A30, B30, C31, D31, E31, F31, G31, A31, B31, C32, D32, E32, F32, G32, A32, B32, C33, D33, E33, F33, G33, A33, B33, C34, D34, E34, F34, G34, A34, B34, C35, D35, E35, F35, G35, A35, B35, C36, D36, E36, F36, G36, A36, B36, C37, D37, E37, F37, G37, A37, B37, C38, D38, E38, F38, G38, A38, B38, C39, D39, E39, F39, G39, A39, B39, C40, D40, E40, F40, G40, A40, B40, C41, D41, E41, F41, G41, A41, B41, C42, D42, E42, F42, G42, A42, B42, C43, D43, E43, F43, G43, A43, B43, C44, D44, E44, F44, G44, A44, B44, C45, D45, E45, F45, G45, A45, B45, C46, D46, E46, F46, G46, A46, B46, C47, D47, E47, F47, G47, A47, B47, C48, D48, E48, F48, G48, A48, B48, C49, D49, E49, F49, G49, A49, B49, C50, D50, E50, F50, G50, A50, B50, C51, D51, E51, F51, G51, A51, B51, C52, D52, E52, F52, G52, A52, B52, C53, D53, E53, F53, G53, A53, B53, C54, D54, E54, F54, G54, A54, B54, C55, D55, E55, F55, G55, A55, B55, C56, D56, E56, F56, G56, A56, B56, C57, D57, E57, F57, G57, A57, B57, C58, D58, E58, F58, G58, A58, B58, C59, D59, E59, F59, G59, A59, B59, C60, D60, E60, F60, G60, A60, B60, C61, D61, E61, F61, G61, A61, B61, C62, D62, E62, F62, G62, A62, B62, C63, D63, E63, F63, G63, A63, B63, C64, D64, E64, F64, G64, A64, B64, C65, D65, E65, F65, G65, A65, B65, C66, D66, E66, F66, G66, A66, B66, C67, D67, E67, F67, G67, A67, B67, C68, D68, E68, F68, G68, A68, B68, C69, D69, E69, F69, G69, A69, B69, C70, D70, E70, F70, G70, A70, B70, C71, D71, E71, F71, G71, A71, B71, C72, D72, E72, F72, G72, A72, B72, C73, D73, E73, F73, G73, A73, B73, C74, D74, E74, F74, G74, A74, B74, C75, D75, E75, F75, G75, A75, B75, C76, D76, E76, F76, G76, A76, B76, C77, D77, E77, F77, G77, A77, B77, C78, D78, E78, F78, G78, A78, B78, C79, D79, E79, F79, G79, A79, B79, C80, D80, E80, F80, G80, A80, B80, C81, D81, E81, F81, G81, A81, B81, C82, D82, E82, F82, G82, A82, B82, C83, D83, E83, F83, G83, A83, B83, C84, D84, E84, F84, G84, A84, B84, C85, D85, E85, F85, G85, A85, B85, C86, D86, E86, F86, G86, A86, B86, C87, D87, E87, F87, G87, A87, B87, C88, D88, E88, F88, G88, A88, B88, C89, D89, E89, F89, G89, A89, B89, C90, D90, E90, F90, G90, A90, B90, C91, D91, E91, F91, G91, A91, B91, C92, D92, E92, F92, G92, A92, B92, C93, D93, E93, F93, G93, A93, B93, C94, D94, E94, F94, G94, A94, B94, C95, D95, E95, F95, G95, A95, B95, C96, D96, E96, F96, G96, A96, B96, C97, D97, E97, F97, G97, A97, B97, C98, D98, E98, F98, G98, A98, B98, C99, D99, E99, F99, G99, A99, B99, C100, D100, E100, F100, G100, A100, B100, C101, D101, E101, F101, G101, A101, B101, C102, D102, E102, F102, G102, A102, B102, C103, D103, E103, F103, G103, A103, B103, C104, D104, E104, F104, G104, A104, B104, C105, D105, E105, F105, G105, A105, B105, C106, D106, E106, F106, G106, A106, B106, C107, D107, E107, F107, G107, A107, B107, C108, D108, E108, F108, G108, A108, B108, C109, D109, E109, F109, G109, A109, B109, C110, D110, E110, F110, G110, A110, B110, C111, D111, E111, F111, G111, A111, B111, C112, D112, E112, F112, G112, A112, B112, C113, D113, E113, F113, G113, A113, B113, C114, D114, E114, F114, G114, A114, B114, C115, D115, E115, F115, G115, A115, B115, C116, D116, E116, F116, G116, A116, B116, C117, D117, E117, F117, G117, A117, B117, C118, D118, E118, F118, G118, A118, B118, C119, D119, E119, F119, G119, A119, B119, C120, D120, E120, F120, G120, A120, B120, C121, D121, E121, F121, G121, A121, B121, C122, D122, E122, F122, G122, A122, B122, C123, D123, E123, F123, G123, A123, B123, C124, D124, E124, F124, G124, A124, B124, C125, D125, E125, F125, G125, A125, B125, C126, D126, E126, F126, G126, A126, B126, C127, D127, E127, F127, G127, A127, B127, C128, D128, E128, F128, G128, A128, B128, C129, D129, E129, F129, G129, A129, B129, C130, D130, E130, F130, G130, A130, B130, C131, D131, E131, F131, G131, A131, B131, C132, D132, E132, F132, G132, A132, B132, C133, D133, E133, F133, G133, A133, B133, C134, D134, E134, F134, G134, A134, B134, C135, D135, E135, F135, G135, A135, B135, C136, D136, E136, F136, G136, A136, B136, C137, D137, E137, F137, G137, A137, B137,

C. a., B. cl., Hn.

f *ff* *pp* *p* *ff*

420

musical score for the bass line of "The Swan" by Camille Saint-Saëns. The score is in 6/4 time and consists of four measures. The first measure is marked *p* (piano) and the second *ff* (fortissimo). The tempo markings *rall.* (ritardando) and *Poco sostenuto* are indicated above the staff. The key signature has one sharp (F#). The bass line features a series of descending eighth notes and a final sustained note marked with a "2".

a tempo, ma poco agitato 430 rall. molto - - - - -

ff *ff* *ff* *ff*

a tempo, molto pomposo



3

440