

Mezzo-soprano

# 934 Vocalise for Mezzo-soprano and Cello No.4

Stephen W. Beaatty (1938)

**A**  $\text{♩} = 95$

*f* *mf* *f* *mf* *f* *mf*

AA

5 *f* *mp* *mf* *ff*

8 *mf* *ff* *f* *ff* *f* *mf*

11 *f* *mf* *f* *mp* *mf*

15 *f* *mf* *ppp* *p* *f*

18 *mf* *mp* *p* *pp*

21 *mp* *mf* *f* *mf*

25 *f* *mf*

29 *mp* *f*

33 *mp* *mf* *f* *mf*

37 *mp* *mf* *mp* *mf* *f*

41 *mf* *mp* *mf* *p* *mf*

45 *f* *mp* *mf* *mp* *mf* *pp* *mp*

49 *p* *mp* *mf* *mp* *p*

53 *mf* *mp* *f* *mp* *mf* *mp* *pp* *mf*

57 *mp* *p* *mf* *p*

61 *mf* *mp* *mf* *mp* *mf*

65 *p* *mf* *p*

69 *mf* *f*

73 *mf* *f* *mf*

77 *f* *mf* *p* *f* *mf*

81 *p* *mf* *mp* *mf*

85 *pp* **B**  $\text{♩} = 95$  *mf* *f*

89 *mf* *mp* *f* *ff* *f*

93 *mf* *mp* *mf* *f* *mf*

97 *f* *mf* *f*

101 *mf* *mp* *f* *mf*

105 *f* *mf* *f*

109 *mf* *p*

## Mezzo-soprano

113 *f* *mf* *f* *mf*

118 *p* *mf* *mp* *pp* *f* *ff*

122 *f* *ff* *f*

This musical score for Mezzo-soprano consists of three staves of music. The first staff (measures 113-117) features a melodic line with dynamic markings *f*, *mf*, *f*, and *mf*. The second staff (measures 118-121) shows a more varied dynamic range with *p*, *mf*, *mp*, *pp*, *f*, and *ff*. The third staff (measures 122-124) continues the melodic development with *f*, *ff*, and *f* dynamics. The music is written in a key with one flat and a 4/4 time signature, using a variety of note values and rests to create a flowing melody.

Violoncello

# 934 Vocalise for Mezzo-soprano and Cello No.4

Stephen W. Beaatty (1938)

A  $\text{♩} = 95$

5 *f* *mf* *f* *mf* *f* *mf*

8 *f* *mp* *mf* *ff*

11 *mf* *ff* *f* *ff* *f* *mf*

15 *f* *mf* *f* *mp* *mf*

18 *ff* *f* *ff* *f* *mf* *f*

22 *mf* *ff* *f* *mf* *f* *mf*

26 *f* *mf* *f* *mf*

29 *mp* *f*

## Violoncello

34

*mf*

38

*ppp*

[illegible]

46

*p* *pp* *p*

50

*mp* *mf* *mp* *p*

[illegible]

58

*p* *mp* *f* *mf*

63

*pp* *mp*

67

*mf* *p* *mf* *mp*

72

*mf* *mp* *mf*

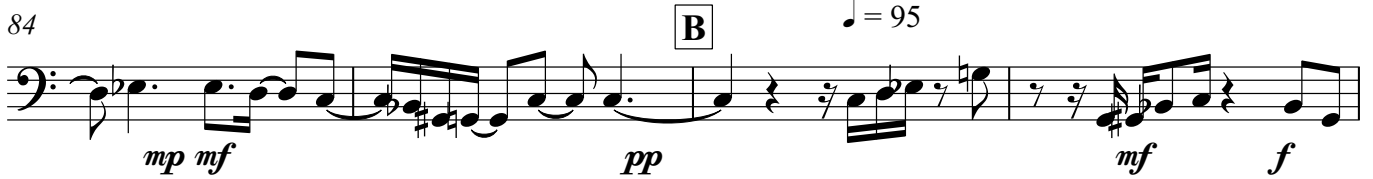
76



80



84



88



92



96



100



104



108



112



## Violoncello

116



120



123

