

319

48

Ouverture.

a

2 Violini

Viola

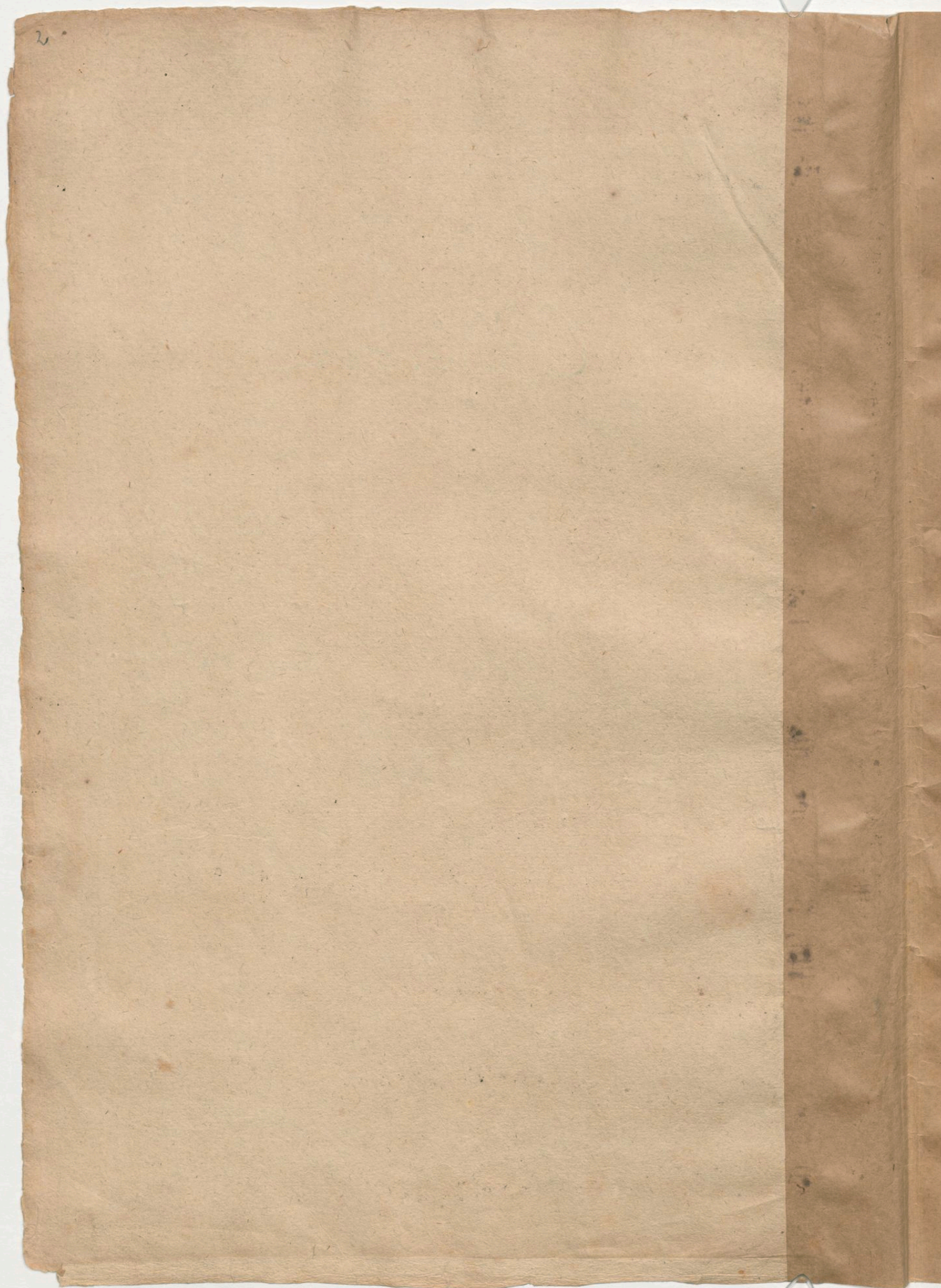
C

Continuo

ci

F. B. B.

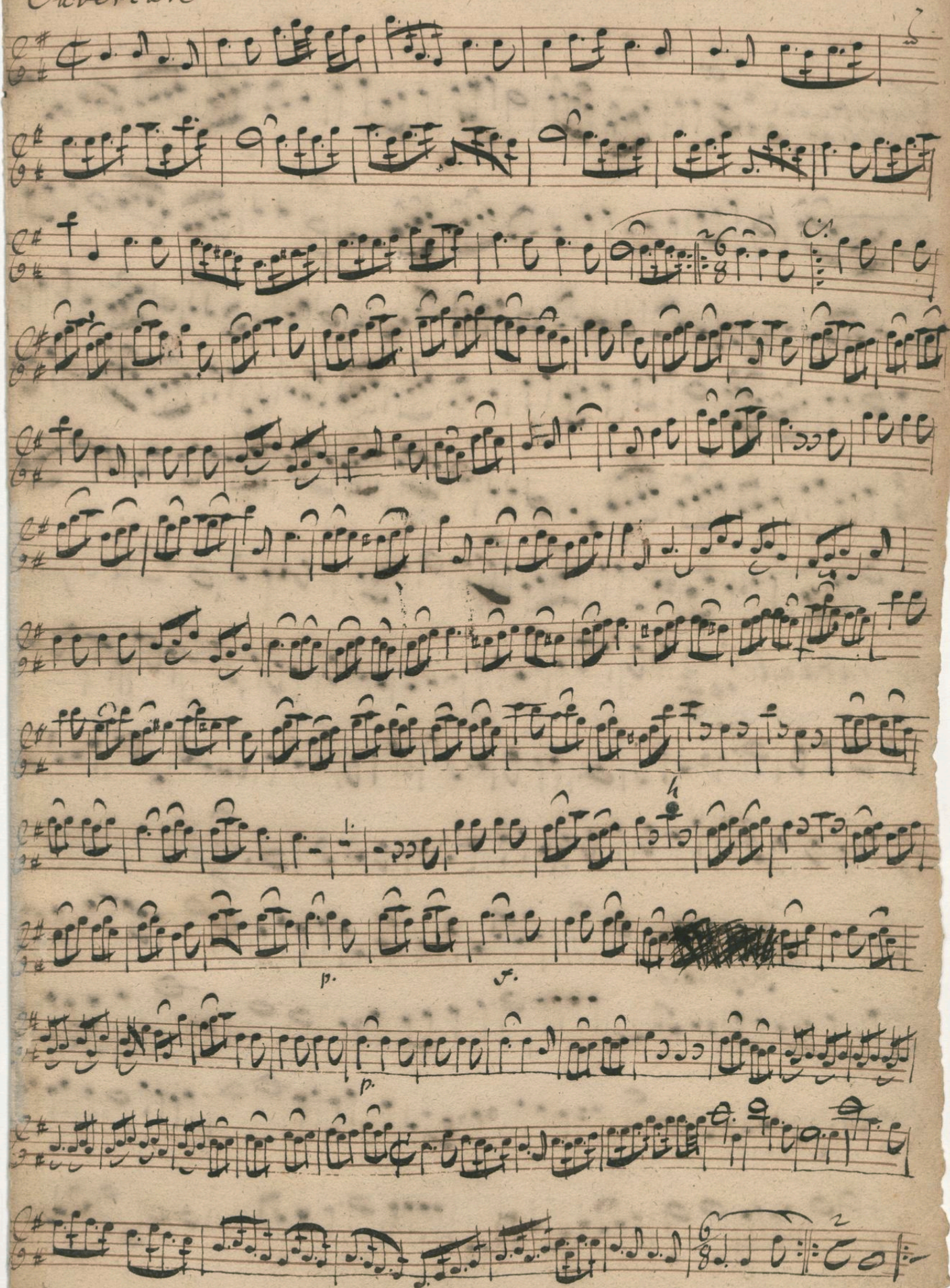
74

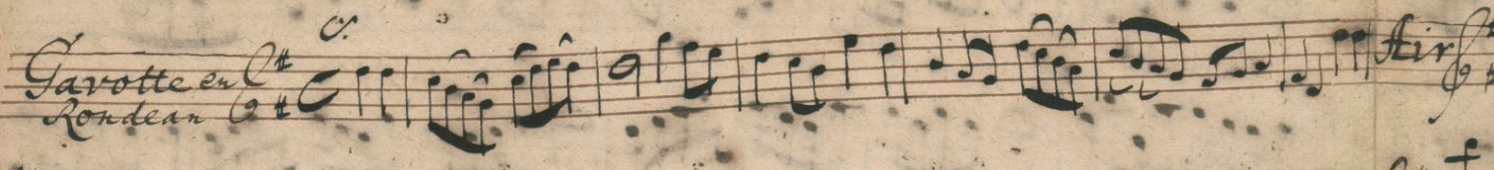


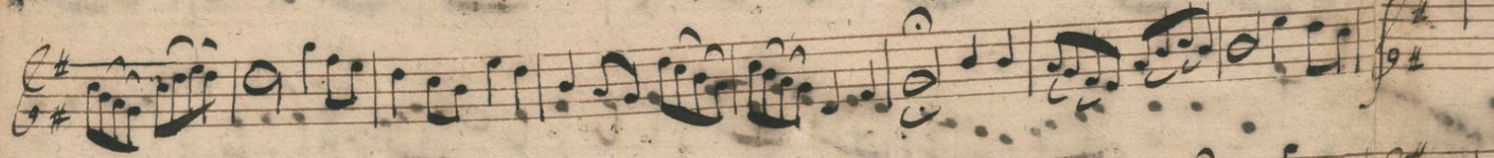
Ouverture

1(-7) Violino Primo

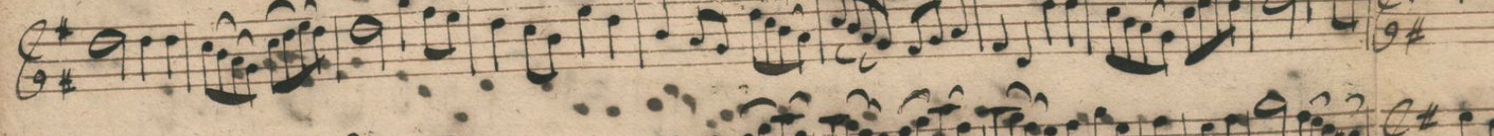
3



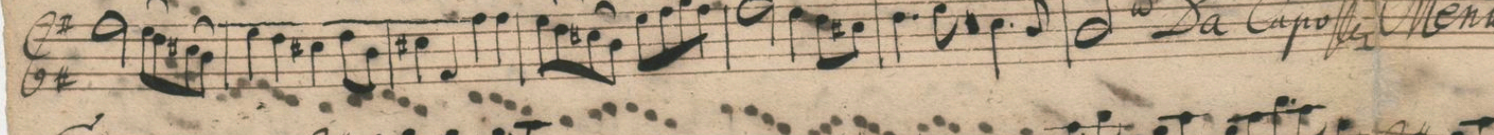
Garotte en Rondeau 

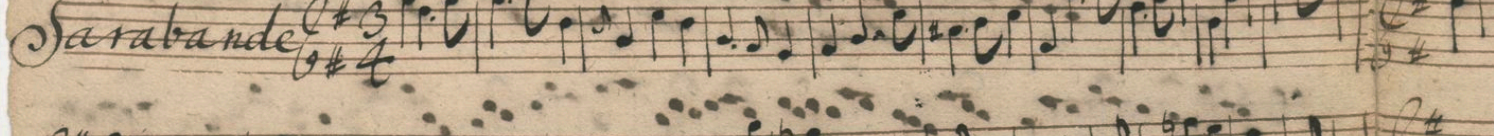


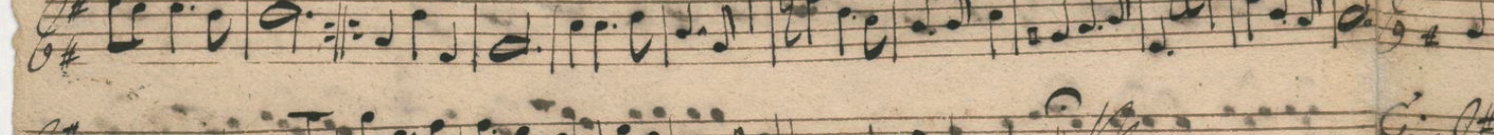




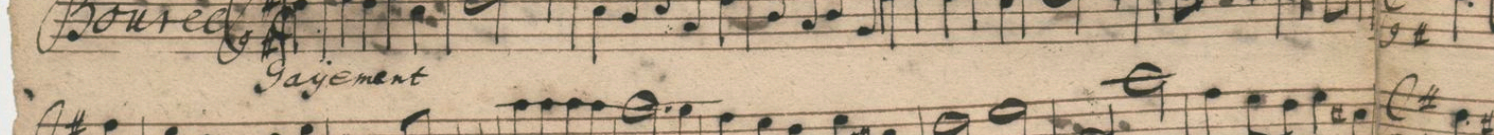




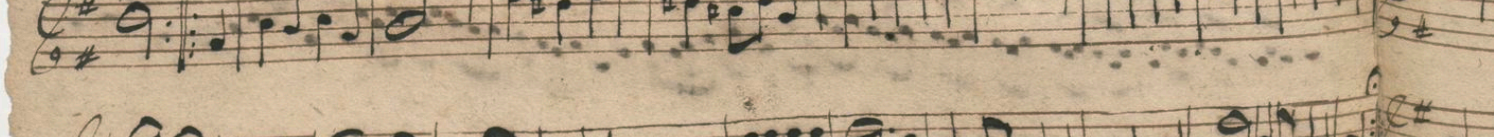
Sarabande 



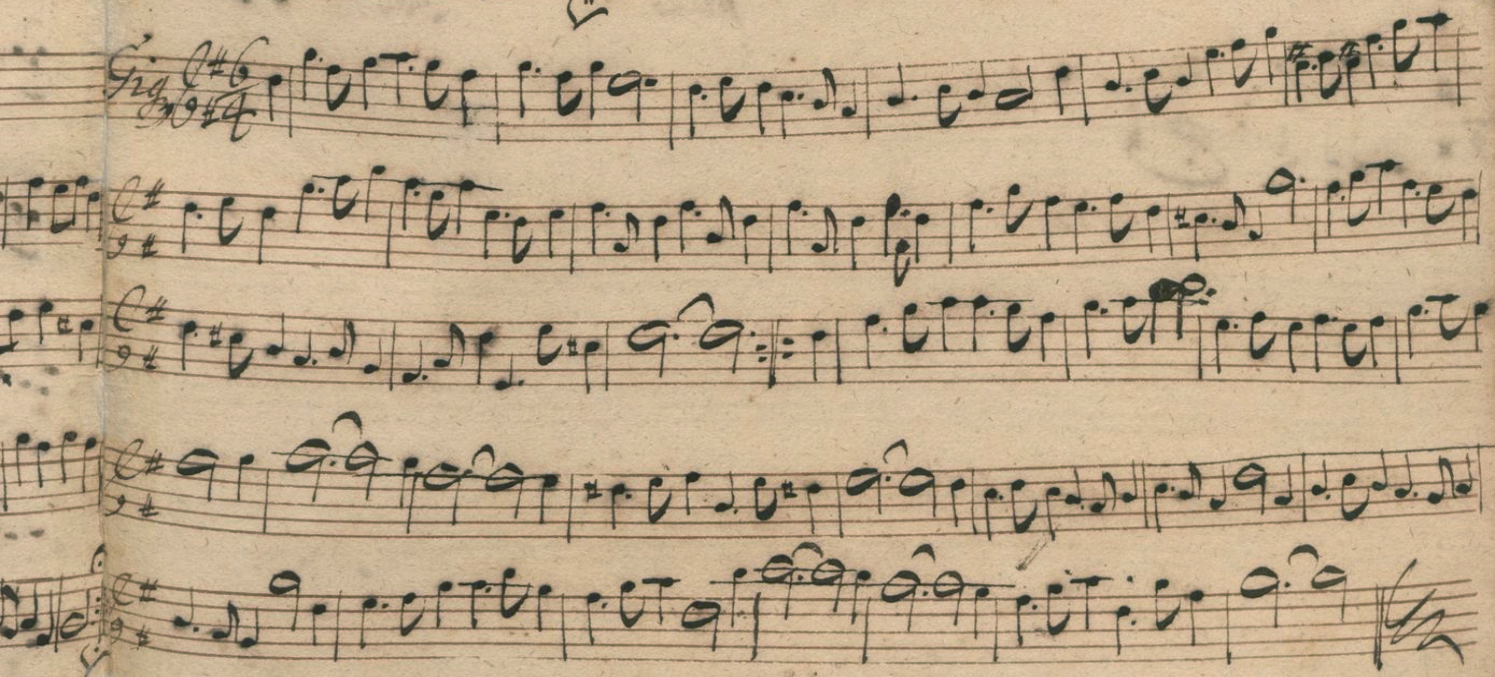
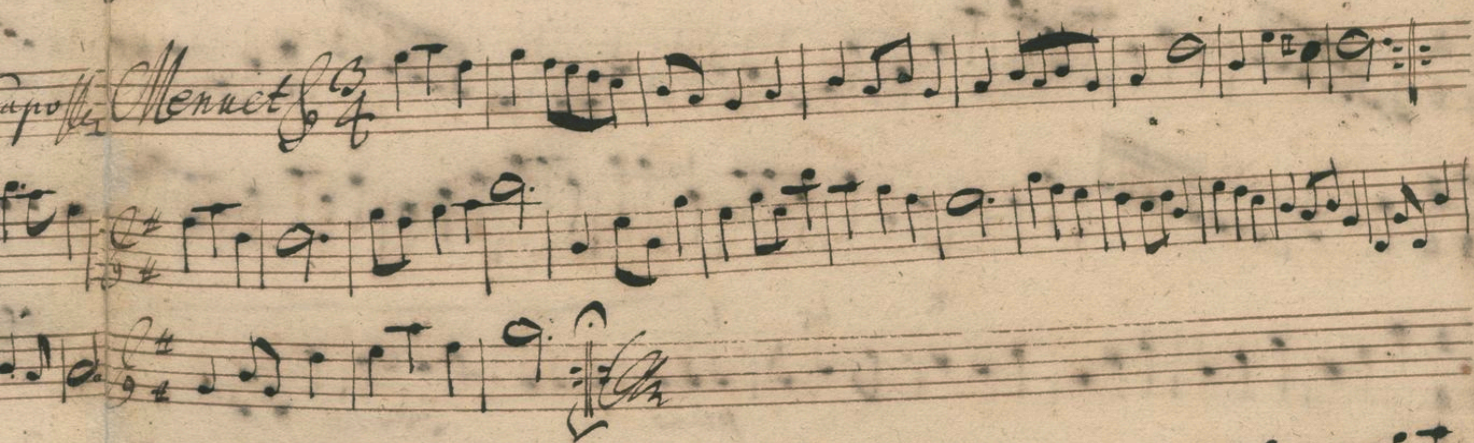
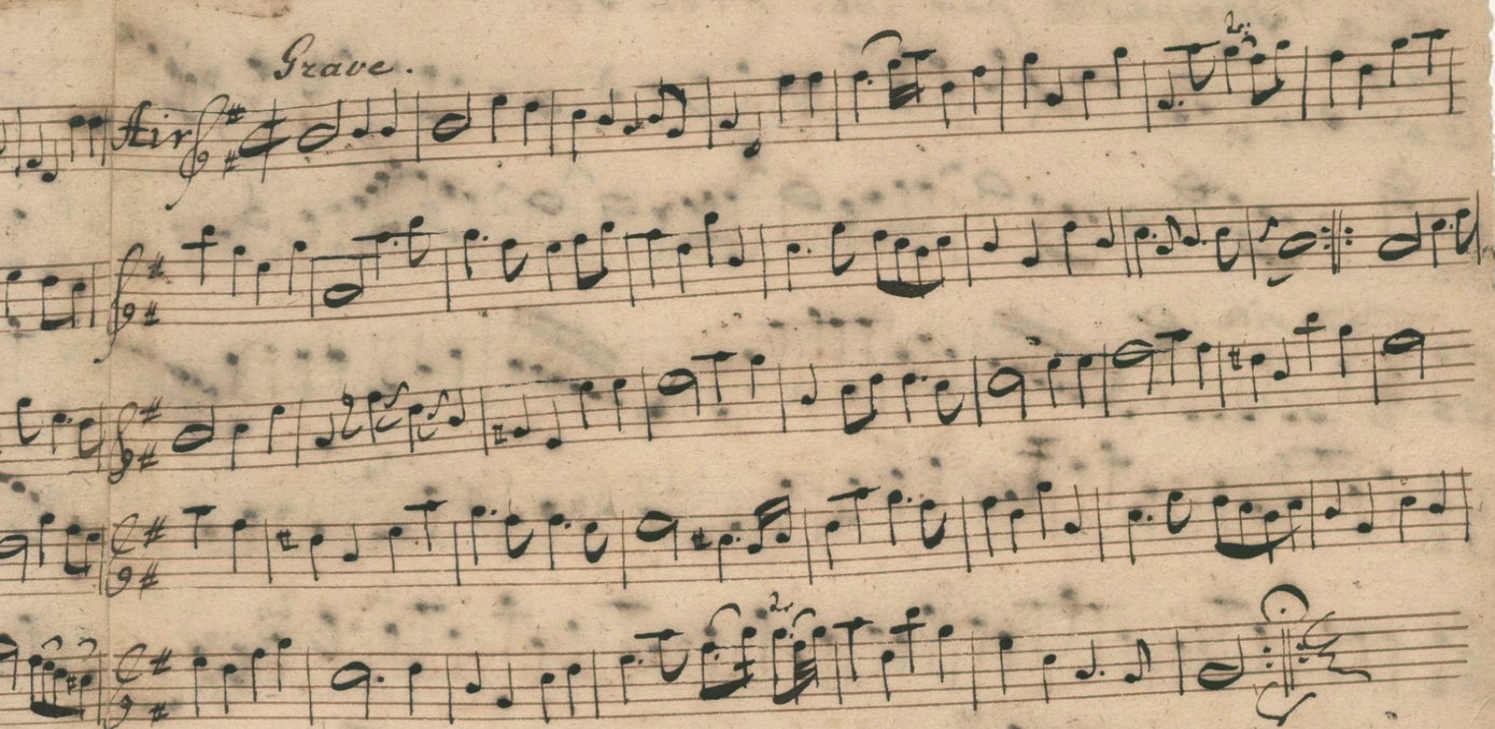


Bourée 

Gaiement 



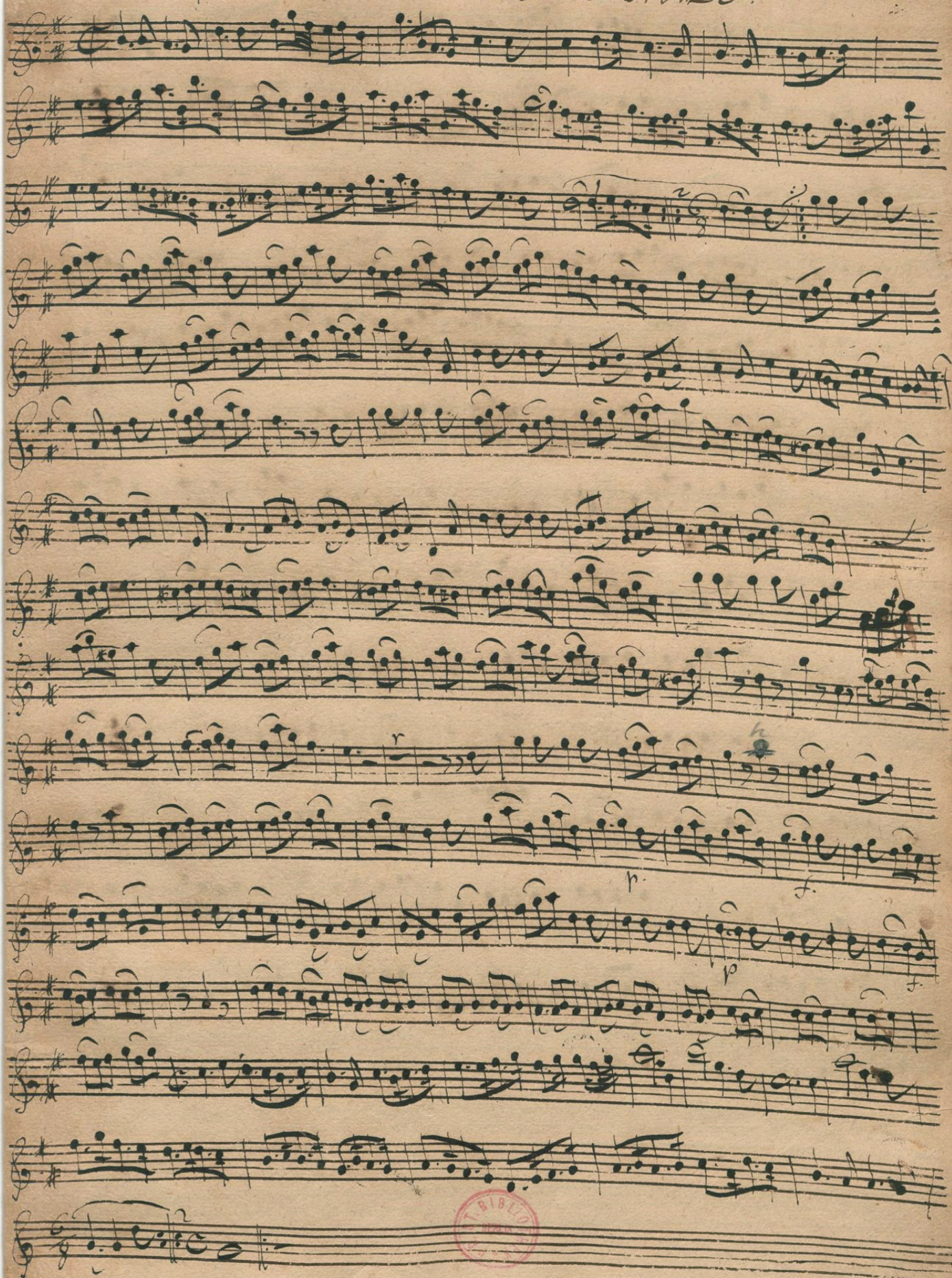


Grave.

Overture.

2 Violino Primo.

7



Garbelle
London

Handwritten musical score for 'Garbelle London'. The piece is written in treble clef with a key signature of one sharp (F#) and a common time signature (C). It consists of six staves of music. The notation includes various note values, rests, and dynamic markings. The piece concludes with a double bar line and a repeat sign.

Sarabande

Handwritten musical score for 'Sarabande'. The piece is written in treble clef with a key signature of one sharp (F#) and a common time signature (C). It consists of two staves of music. The notation includes various note values, rests, and dynamic markings. The piece concludes with a double bar line and a repeat sign.

Bourrée
Gaiement.

Handwritten musical score for 'Bourrée Gaiement.'. The piece is written in treble clef with a key signature of one sharp (F#) and a common time signature (C). It consists of four staves of music. The notation includes various note values, rests, and dynamic markings. The piece concludes with a double bar line and a repeat sign.

Handwritten musical score on aged paper, featuring multiple staves of music. The notation includes various notes, rests, and clefs, with some sections marked by a double bar line and a repeat sign. The paper shows signs of wear, including stains and discoloration.

The score is written on 12 staves. The first staff begins with a treble clef, a key signature of one sharp (F#), and a common time signature (C). The notation includes various note values, including eighth and sixteenth notes, and rests. There are several measures of music, some of which are grouped by a double bar line and a repeat sign. The paper is aged and shows signs of wear, including stains and discoloration.

The second staff continues the musical notation, with similar note values and rests. The third staff also continues the notation, with some measures featuring a double bar line and a repeat sign. The fourth staff continues the notation, with some measures featuring a double bar line and a repeat sign. The fifth staff continues the notation, with some measures featuring a double bar line and a repeat sign. The sixth staff continues the notation, with some measures featuring a double bar line and a repeat sign. The seventh staff continues the notation, with some measures featuring a double bar line and a repeat sign. The eighth staff continues the notation, with some measures featuring a double bar line and a repeat sign. The ninth staff continues the notation, with some measures featuring a double bar line and a repeat sign. The tenth staff continues the notation, with some measures featuring a double bar line and a repeat sign. The eleventh staff continues the notation, with some measures featuring a double bar line and a repeat sign. The twelfth staff continues the notation, with some measures featuring a double bar line and a repeat sign.