

Piano

Imagine (You & Me)

Daniel Léo Simpson
December 14, 2018
San Carlos, California

Moderately ♩=116

The first system of the piano score for 'Imagine (You & Me)'. It is in 4/4 time with a key signature of three sharps (F#, C#, G#). The tempo is marked 'Moderately' with a quarter note equal to 116 beats per minute. The dynamics are marked 'mp' (mezzo-piano). The system consists of four measures. The right hand plays chords, and the left hand plays a simple bass line.

5 Verse 1

The second system of the piano score, starting at measure 5. It continues the musical theme established in the first system, with the right hand playing chords and the left hand playing a simple bass line.

10

The third system of the piano score, starting at measure 10. It continues the musical theme established in the previous systems, with the right hand playing chords and the left hand playing a simple bass line.

16

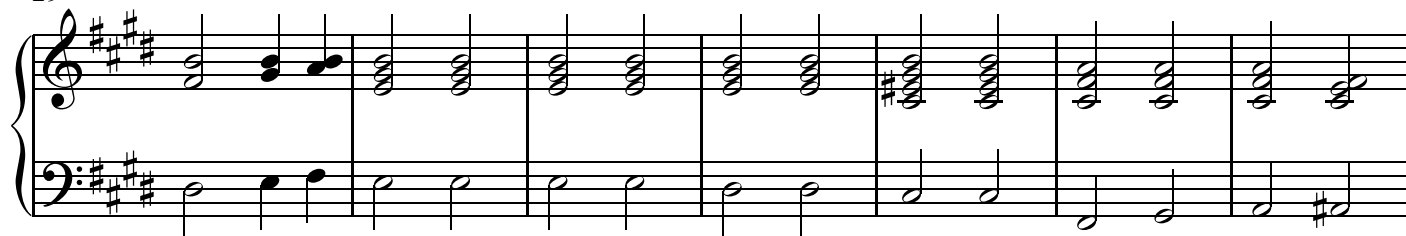
poco rit..

The fourth system of the piano score, starting at measure 16. It continues the musical theme established in the previous systems, with the right hand playing chords and the left hand playing a simple bass line. The tempo is marked 'poco rit..' (poco ritardando).

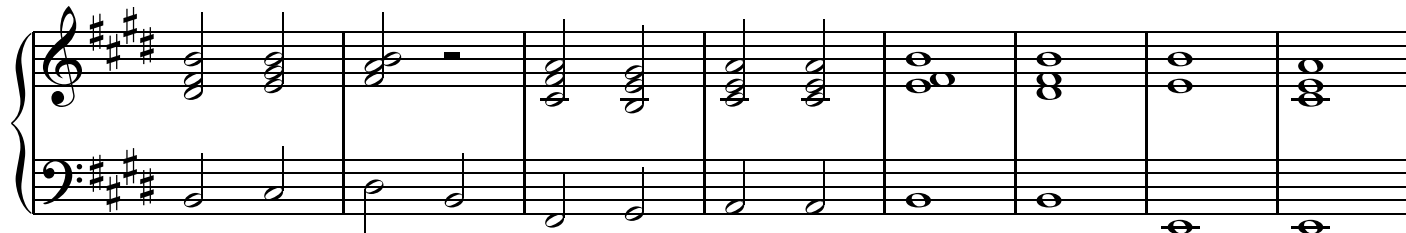
22 Chorus 1

The fifth system of the piano score, starting at measure 22. It continues the musical theme established in the previous systems, with the right hand playing chords and the left hand playing a simple bass line.

29

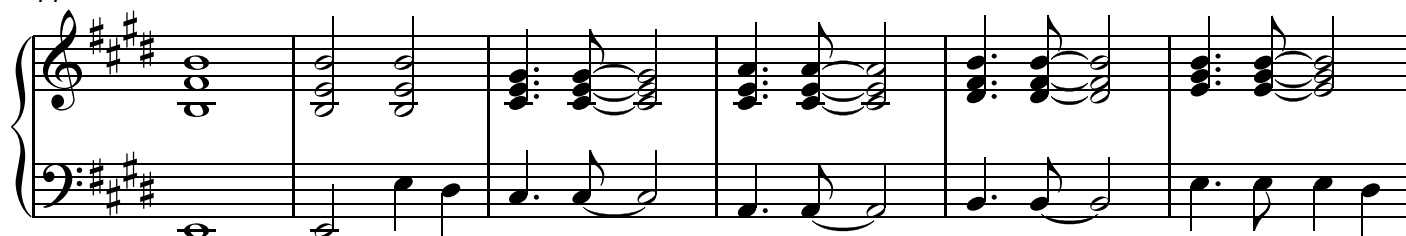


36



44

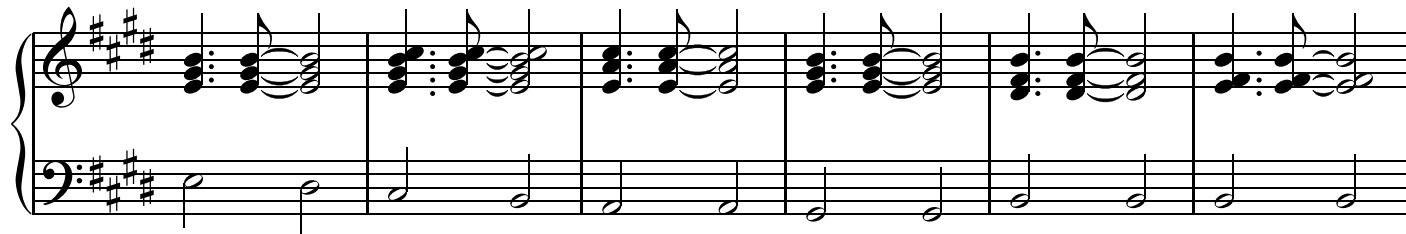
Verse 2



50



56



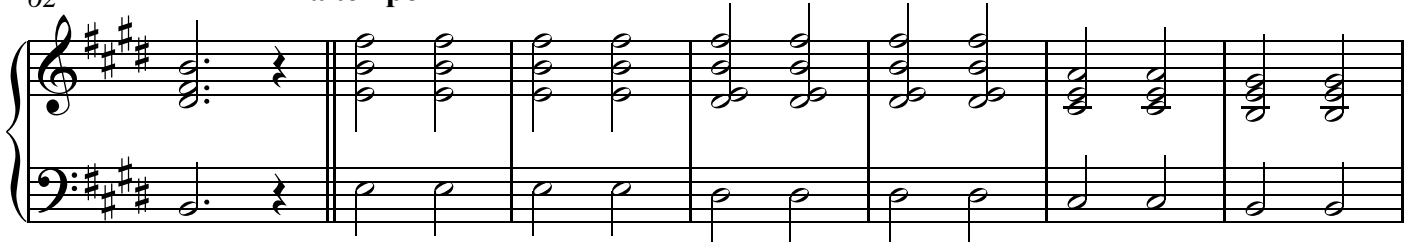
Chorus 2

Piano

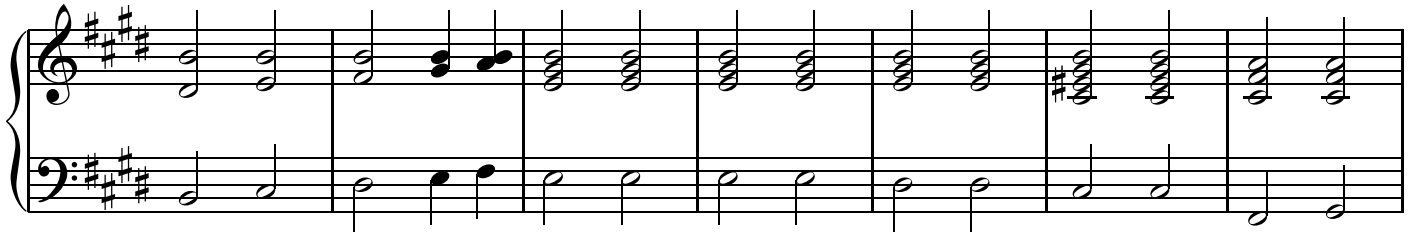
3

a tempo

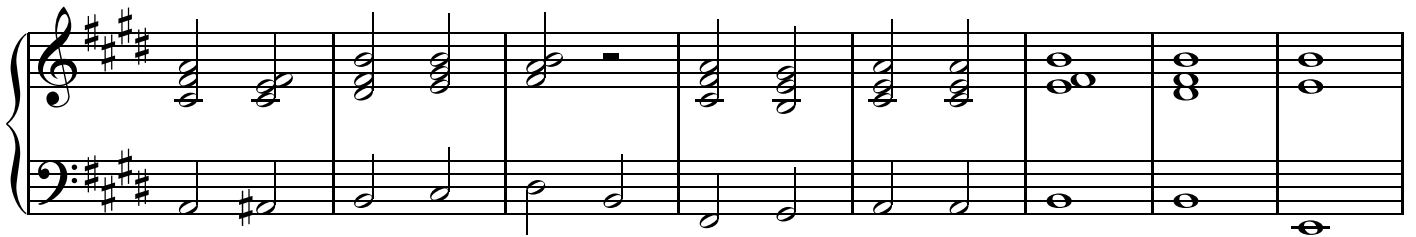
62



69

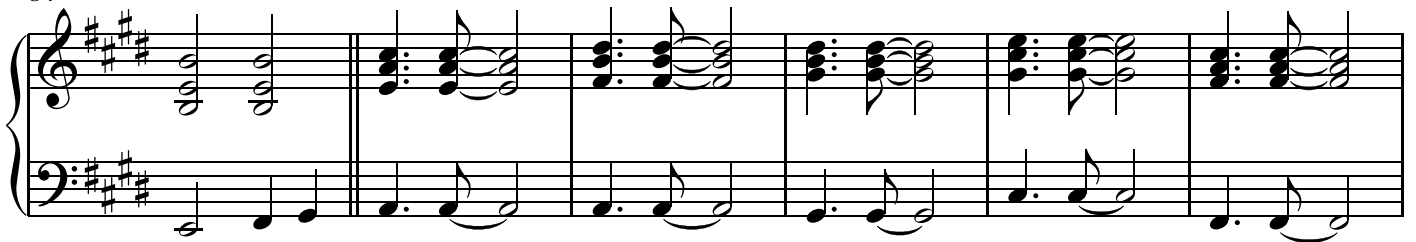


76



BRIDGE

84



90



V.S.

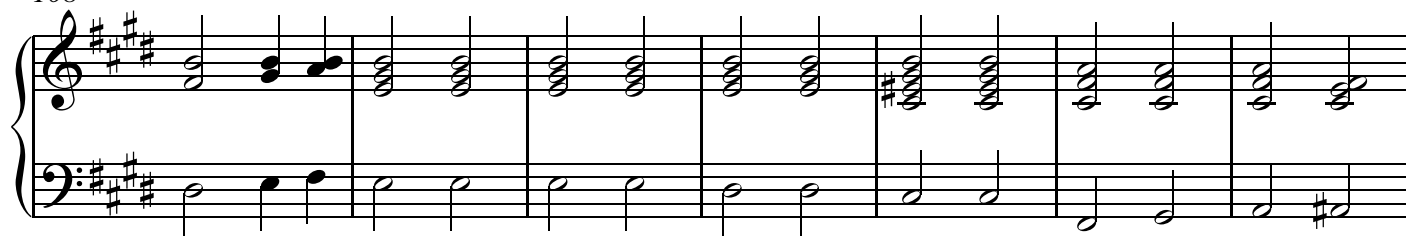
95



101

Chorus 3

108



115



121

rit.