

Viola

dedicated to László G. Horváth, Richárd Rózsa
and the Anima Musicæ Chamber Orchestra

Concerto antico

for violin, cello and string orchestra

I

Tamás Beischer-Matyó

Vivace ♩ = 138

pp

p

p

p

ff

ffz > p

ffz > p

ffz > p

ffz > p

ffz > p

ffz > p

Copyright Tamás Beischer-Matyó, 2020

http://beischermatyo.hu/concerto_antico

This work is licensed under the Creative Commons Attribution-NonCommercial-NoDerivatives 4.0 International License.
To view a copy of this license, visit <https://creativecommons.org/licenses/by-nc-nd/4.0/>

solo 58 II (II)

p

solo 68

ppp

pp

pp

74 *rit.* - - - **Allegro moderato** ♩ = 88

ppp *p* *f* *p*

79 83

p *f* *pesante*

87

pp *p*

91

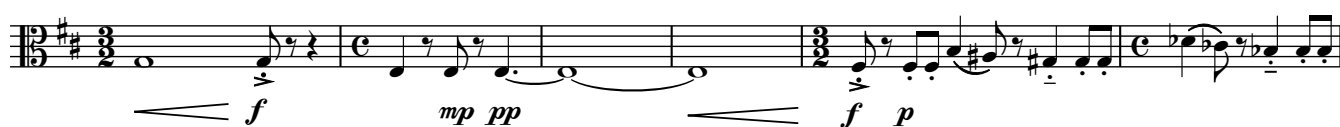
mf *ff*

97 **Vivo** ♩ = 112

sfz *p* *f* *p*

106

rit. - - - a tempo ♩ = 112



111

pizz.



116

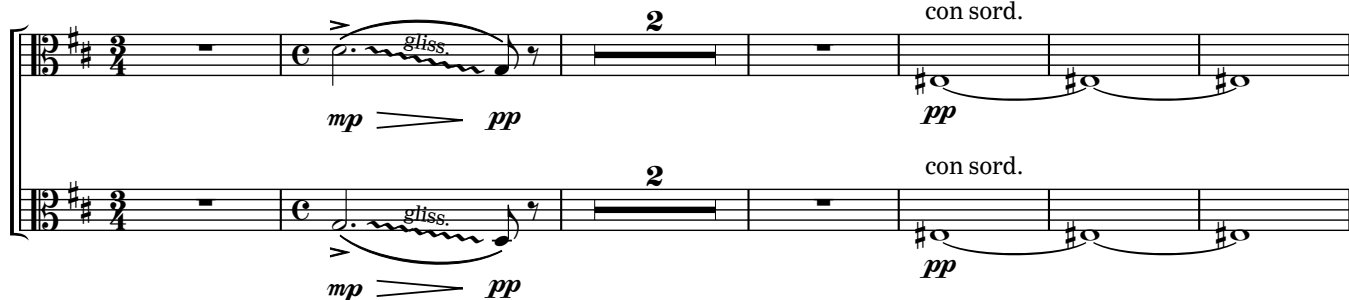
rall. - - -

♩ = 76

rit. - - -

♩ = 69

con sord.



125

rall. - - -

Adagio ♩ = 63

rall. ♩ = 60

rall. ♩ = 58

129



135

rall. - - ♩ = 56

rall. - - ♩ = 54

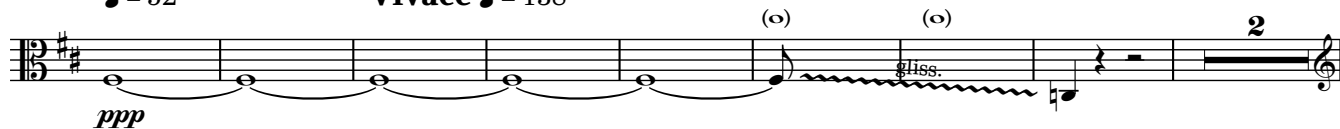
rall. - - -



139

♩ = 52

Vivace ♩ = 138

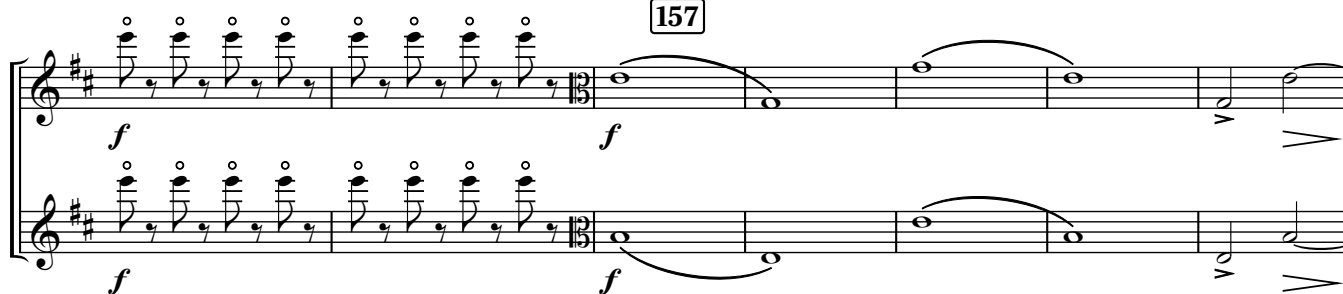


147

senza sord.



157



162

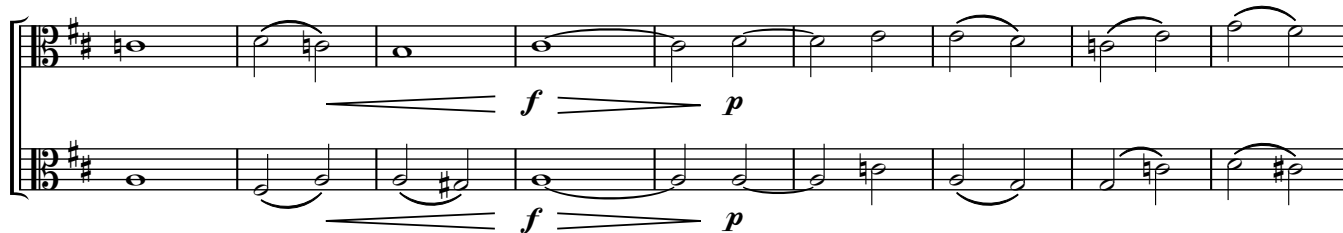
171



180



188



195



203 210

sfz *p* *sfz* *p*

5 10

220

S. vln.

p *pp*

rit. molto

p *mp* *mf* *f* *ff*

228

a tempo ♩ = 138

f

234

rall. ♩ = 88 *a tempo* ♩ = 138 *rall.*

sfz *p* *f* *p*

239 244

♩ = 88 ♩ = 138 ♩ = 88 ♩ = 138

tr *pp* *f* *f*

ff

rall. ♩ = 88

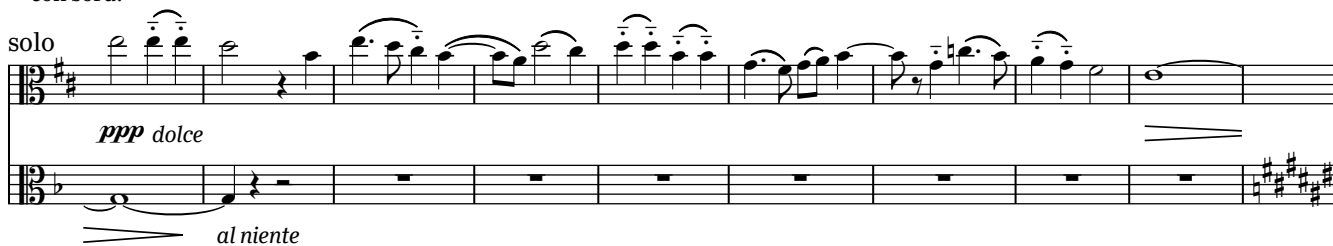
pp *ff*

II

Con moto ♩ = 126con sord.
sul tasto, senza vibr.

10

con sord. senza vibr.



19



27

33

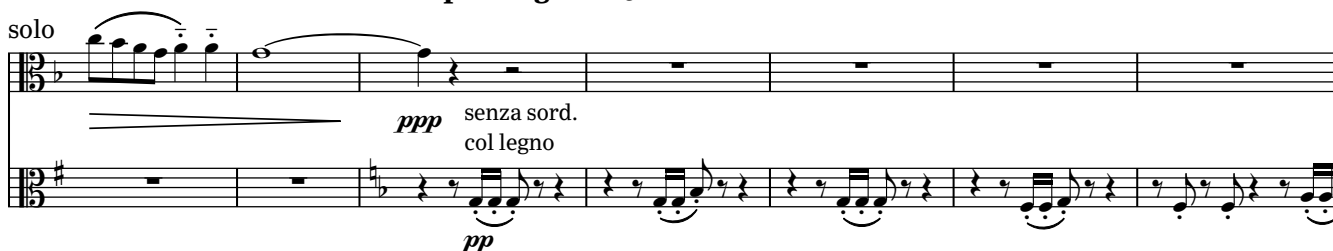


37

43



47

rall. molto**Un poco agitato** ♩ = 138

solo

56 *un poco tratt.* ♩ = 112
(senza sord.)

mf *ord.* *pp*

p

a tempo ♩ = 138

col legno

61

ppp *pp* *mp*

rall. *un poco tratt.* ♩ = 112
sul tasto (senza vibr.)

ppp *pp* *pp*

rit.

solo

solo

♩ = 112

rit. ♩ = 112

rit.

77 *Con moto* ♩ = 126

rall. *un poco tratt.* ♩ = 112

pp *mp* *ppp*

ord. *ppp* *mp* *ppp* *pp*

solo

89 *rall. molto* *Un poco agitato* ♩ = 138

ppp *f* *pp*

100 *rall. molto al* ♩ = 84

pizz. *p*

104
un poco tratt. ♩ = 112
 arco
p cantabile

110

114
rit. a tempo

123

120
rit. . . . Appassionato ♩ = 168
mf *ff*

123

131

140

131

140

140
mf

149

144 148

tratt. ♩ = 152 *rit.* - *a tempo* ♩ = 168

p

152 156

mp

160

rall. *al* ♩ = 84

ppp

168

Con moto ♩ = 126

S. vc.

177 183

col legno

p

S. vln.

191

rit. **a tempo**
ord. (spicc.)

pp

197

rit. **a tempo**

III

p espr.

solo

202

rall. **Lento molto** ♩ = 48

pppp

con sord.

Vln. I-II

ppp

pppp

con sord.

ppp

rit. ... **a tempo** ♩ = 48

rit.

con sord.

ppp

con sord.

ppp

211 $\text{♩} = 112$ *poco accel.* 215 $\text{♩} = 138$ **Un poco agitato**

pp *p* *p*

221 $\text{♩} = 112$ *rall.* (con sord.) *rall.* $\text{♩} = 96$

solo

p *pp* *pp*

229 $\text{♩} = 76$ *rall.* *rall.*

f *p* *p* *p* *ppp*

III

Allegretto $\text{♩} = 88$

8



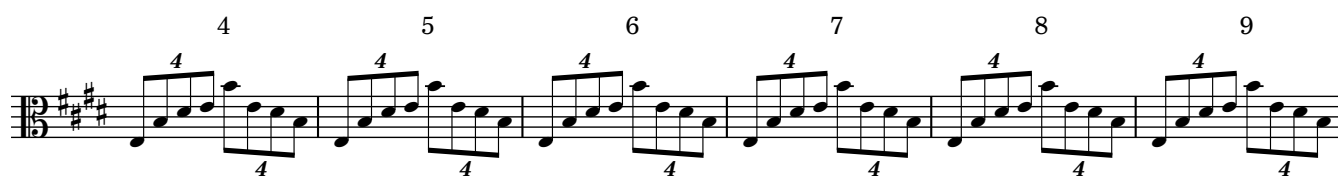
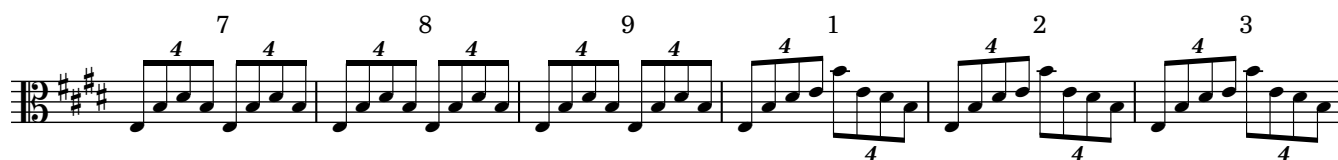
16



24



33



42

pizz. arco pizz.

f *f* *p*

52

57

arco

ff

66

73

Meno mosso ♩ = 76

ppp

S. vln.

84 *pp*

92

102 *mf* *p* *mf*

110 *Allegretto* ♩ = 88 *ff*

115 *pizz.* *gliss.* *gliss.* *gliss.* *gliss.* *gliss.* *gliss.* *p*

123 *arco, sul pont.* *trem.* *pp*

col legno

133 *mp*

Allegro vivace ♩ = 152 *f* *mp*

138 *ord.* *p*

142 *col legno* *mp*

146 *mf* *f*

ord. 153

ff mp

159

f ff

167

173

solo *pp*

pp

solo

182

solo *pp* duro e ritmico *mp*

188

solo *p*

pp p

193

solo

Measures 193-198. The top staff (treble clef) features a solo line starting with a mezzo-piano (*mp*) dynamic, followed by a piano (*p*) section. The bottom staff (bass clef) provides accompaniment, starting with a piano (*p*) dynamic. The key signature is one sharp (F#).

199

solo

Measures 199-205. The top staff (treble clef) features a solo line starting with a mezzo-piano (*mp*) dynamic, followed by a mezzo-forte (*mf*) section. The bottom staff (bass clef) provides accompaniment, starting with a forte (*f*) dynamic. The key signature is one sharp (F#).

206

solo

Measures 206-212. The top staff (treble clef) features a solo line starting with a mezzo-piano (*mp*) dynamic, followed by a forte (*f*) section. The bottom staff (bass clef) provides accompaniment, starting with a mezzo-piano (*mp*) dynamic. The key signature is one sharp (F#).

213

solo

Measures 213-218. The top staff (treble clef) features a solo line starting with a piano (*p*) dynamic, followed by a mezzo-forte (*mf*) section. The bottom staff (bass clef) provides accompaniment, starting with a piano (*p*) dynamic. The key signature is one sharp (F#).

solo

Measures 219-224. The top staff (treble clef) features a solo line. The bottom staff (bass clef) provides accompaniment, starting with a piano-piano (*pp*) dynamic. The key signature is one sharp (F#).

solo

217

pp *p* *mp*

221

225

ff *mp* *ff*

233

240

mf *f*

246

250

ff

254 pizz. *mp* arco *mf* 258

262 *f* *ff*

269

275 *poco rall.* **Allegretto** ♩. = 88 *pp* *p*

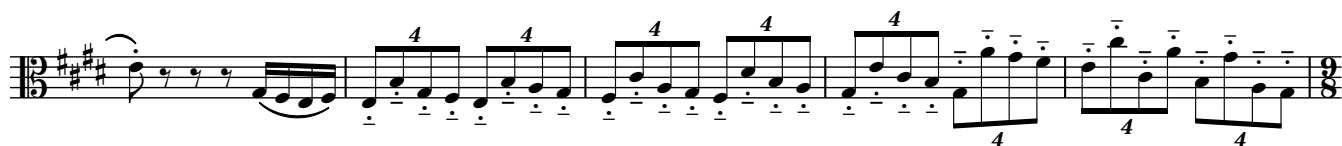
collegno 1 2 3 4

281 5 6 7 8 9 10

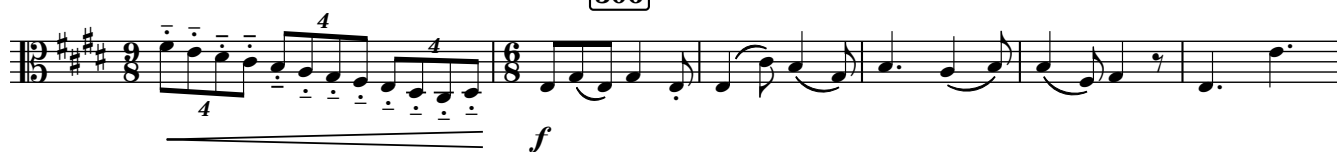
289 S. vln. *mf*

11 12 13

297 ord. *mf*



306



315

un poco tratt. ♩. = 76

320

rit. *accel.* . . . *a tempo* ♩. = 88

325

rit.

329

a tempo

S. vc.



S. vln.

337

*poco rit.*