

Flute

1347 Vocalise for Soprano and Flute Stephen W. Beatty (1938)

A $\text{♩} = 85$

8va-----

f

6 (8)-----

mf f ff mf

10 (8)-----

f mf f mf f

14 (8)-----

8va-----

mf f

18 (8)-----

mf f mf f

21 (8)-----

8va-----

mf f p

26 (8)-----

mp mf f mf p

30 (8)-----

ppp f mf f

34 (8)-----

38 (8)

42 (8)

46 (8)

51 (8)

55 (8)

59 (8)

63 (8)

67 (8)

71 (8)

75

Detailed description: This page contains nine staves of musical notation for a flute part. Each staff begins with a measure number and a rehearsal mark (8). The notation includes various note values, rests, and dynamic markings. The dynamics are: mf (mezzo-forte), f (forte), mp (mezzo-piano), and pp (pianissimo). Octave transpositions are indicated by '8va' above the staff lines. The key signature has one sharp (F#). The time signature is not explicitly shown but appears to be 4/4 based on the note values.

79 (8)

f *mf* *f*

83

mf *f* *8va*

88 (8)

mf *f* *mf* *f*

92 (8)

mf *f* *mp* *f*

96

mf *f* *mf* *f* *8va*

99 (8)

mf *f* *mp* *mf*

103 (8)

mp *mf* *f* *mf* *f*

106 (8)

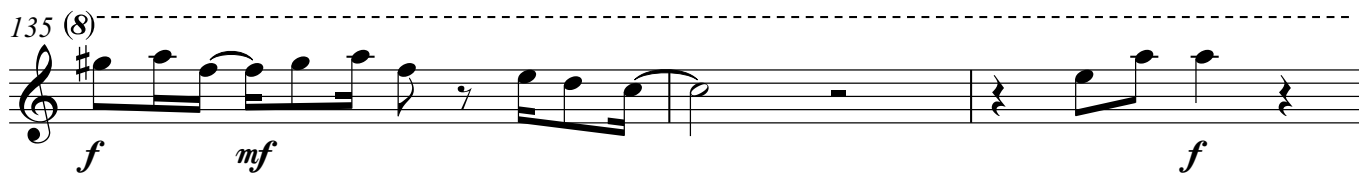
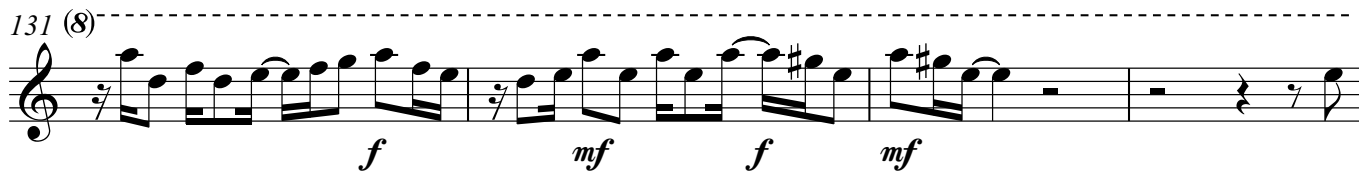
mf *ff* *mf*

109 (8)

mp *mf*

112 (8)

f *mf* *f* *8va*



Soprano

1347 Vocalise for Soprano and Flute

Stephen W. Beatty (1938)

A $\text{♩} = 85$ *mf* *f* *mf* *p* **3**

7 *mf* *mp* *mf*

10 *f* *mf* *f* *p*

13 *mf* *pp* *mp* *mf*

17 *mp* *pp* *mp* *mf* *mp*

21 *mf* *mp* *p*

24 *mf* *p* *mf* *f* *mp*

27 *mf* *f* *p* *mp*

31 *p mp mf mp*

35 *mf f mf*

38 *pp mf f mf*

42 *ff mf f mf*

46 *p mp*

50 *pp mp mf mp mf p*

54 *mp mf pp p*

57 *mp f*

61 *mf mp mf*

65 *p mf pp mp ff mf*

This page contains the musical notation for measures 31 through 70 of a soprano part. The notation is written on a single staff in treble clef. The key signature has one sharp (F#). The music features a variety of dynamic markings: *p* (piano), *mp* (mezzo-piano), *mf* (mezzo-forte), *f* (forte), *ff* (fortissimo), *pp* (pianissimo), and *ppp* (pianississimo). The melodic line is characterized by frequent sixteenth-note runs and eighth-note patterns, often with slurs. There are several rests throughout the piece, particularly in measures 38, 42, 46, 50, 54, 57, 61, and 65. The piece concludes with a final measure (70) featuring a half note and a quarter note.

69 *pp mp mf f*

73 *mf mp p mf*

77 *p mf p mf mp*

81 *mf f mf*

84 *f mf mp f mf*

88 *pp mf*

92 *mp mf*

96 *mp mf*

100 *mp p pp mp*

103 *mf mp mf pp mp mf*

Soprano

106 *mp p pp mf*

109 *mp p mp pp p*

112 *pp mf ppp mp p mf mp*

116 *ppp p mp*

120 *pp mp mf mp mf p*

123 *mp mf mp p*

127 *mp mf mp pp mf mp*

131 *p mp pp mp*

134 *mf mp mf f*

137 *mf p mp ppp*