

BEETHOVEN

String Quartets

Volume 2

Opus 59 1-3

arranged for two piano four hands

PIANO II

Piano 2

String Quartet

arranged for two pianos

Beethoven, Opus 59 No. 1

Allegro

Musical notation for measures 1-6 of Piano 2. The treble clef staff is empty. The bass clef staff begins with a mezzo-forte (*mf*) dynamic. It features a series of eighth notes in the right hand and a series of eighth notes in the left hand, with a crescendo (*cresc.*) marking at the end of the first system.

Musical notation for measures 7-10 of Piano 2. The treble clef staff is empty. The bass clef staff begins with a piano (*p*) dynamic. It features a series of eighth notes in the right hand and a series of eighth notes in the left hand, with a crescendo (*cresc.*) marking at the end of the first system.

Musical notation for measures 11-13 of Piano 2. The treble clef staff is empty. The bass clef staff begins with a piano (*p*) dynamic. It features a series of eighth notes in the right hand and a series of eighth notes in the left hand, with a crescendo (*cresc.*) marking at the end of the first system.

Musical notation for measures 14-16 of Piano 2. The treble clef staff is empty. The bass clef staff begins with a piano (*p*) dynamic. It features a series of eighth notes in the right hand and a series of eighth notes in the left hand, with a crescendo (*cresc.*) marking at the end of the first system.

Musical notation for measures 17-20 of Piano 2. The treble clef staff is empty. The bass clef staff begins with a piano (*p*) dynamic. It features a series of eighth notes in the right hand and a series of eighth notes in the left hand, with a crescendo (*cresc.*) marking at the end of the first system.

String Quartet, Opus 59 No. 1 - 2

22

22

cresc.

28

28

sf *p* *dolce*

34

34

sfp

39

39

sfp *cresc.*

44

44

p *cresc.* *f* 3

48

48

ff *sf* *sf* 3

String Quartet, Opus 59 No. 1 - 3

52

52

p

sfp

sfp

sfp

58

58

p

sfp

63

63

p

cresc.

sfp

sfp

69

69

sfp

sfp

cresc.

73

73

p

cresc.

sfp

78

78

cresc.

sfp

String Quartet, Opus 59 No. 1 - 4

83

88

96

102

108

114

String Quartet, Opus 59 No. 1 - 5

119

p 3 3 3

cresc.

123

f *fp*

129

f *fp*

134

f *fp* *f* *p*

139

cresc. *ff*

143

p

String Quartet, Opus 59 No. 1 - 6

150

162

170

175

182

188

String Quartet, Opus 59 No. 1 - 7

193

Measures 193-196. Treble clef staff: 193 (Bb, A, G, F, E, D, C, Bb), 194 (Bb, A, G, F, E, D, C, Bb), 195 (Bb, A, G, F, E, D, C, Bb), 196 (Bb, A, G, F, E, D, C, Bb). Bass clef staff: whole rests.

197

Measures 197-201. Treble clef staff: 197 (Bb, A, G, F, E, D, C, Bb), 198 (Bb, A, G, F, E, D, C, Bb), 199 (Bb, A, G, F, E, D, C, Bb), 200 (Bb, A, G, F, E, D, C, Bb), 201 (Bb, A, G, F, E, D, C, Bb). Bass clef staff: whole rests. *cresc.* is written above measure 201.

202

Measures 202-205. Treble clef staff: 202 (Bb, A, G, F, E, D, C, Bb), 203 (Bb, A, G, F, E, D, C, Bb), 204 (Bb, A, G, F, E, D, C, Bb), 205 (Bb, A, G, F, E, D, C, Bb). Bass clef staff: whole rests. *f* is written below measure 202, and *sf* is written below measure 204.

206

Measures 206-209. Treble clef staff: 206 (Bb, A, G, F, E, D, C, Bb), 207 (Bb, A, G, F, E, D, C, Bb), 208 (Bb, A, G, F, E, D, C, Bb), 209 (Bb, A, G, F, E, D, C, Bb). Bass clef staff: whole rests. *sf* is written below measure 206, and *sf* is written below measure 208.

210

Measures 210-216. Treble clef staff: 210 (Bb, A, G, F, E, D, C, Bb), 211 (Bb, A, G, F, E, D, C, Bb), 212 (Bb, A, G, F, E, D, C, Bb), 213 (Bb, A, G, F, E, D, C, Bb), 214 (Bb, A, G, F, E, D, C, Bb), 215 (Bb, A, G, F, E, D, C, Bb), 216 (Bb, A, G, F, E, D, C, Bb). Bass clef staff: whole rests. *decresc.* is written above measure 210, and *sf* is written below measure 210.

217

Measures 217-221. Treble clef staff: 217 (Bb, A, G, F, E, D, C, Bb), 218 (Bb, A, G, F, E, D, C, Bb), 219 (Bb, A, G, F, E, D, C, Bb), 220 (Bb, A, G, F, E, D, C, Bb), 221 (Bb, A, G, F, E, D, C, Bb). Bass clef staff: whole rests. *p* is written below measure 217.

String Quartet, Opus 59 No. 1 - 8

223

Measures 223-227. Treble clef: whole rest, whole rest, whole rest, triplet of eighth notes, triplet of eighth notes. Bass clef: whole rest, triplet of eighth notes, half note, triplet of eighth notes, half note.

228

Measures 228-232. Treble clef: half note, half note, half note, half note, half note, half note, half note, half note, half note, half note. Bass clef: whole rest, triplet of eighth notes, triplet of eighth notes, half note, half note, half note, half note, half note, half note, half note.

233

Measures 233-237. Treble clef: half note, half note, half note, half note, half note, half note, half note, half note, half note, half note. Bass clef: triplet of eighth notes, triplet of eighth notes, triplet of eighth notes, triplet of eighth notes, triplet of eighth notes, triplet of eighth notes, triplet of eighth notes, triplet of eighth notes, triplet of eighth notes, triplet of eighth notes.

238

Measures 238-244. Treble clef: half note, half note, half note, half note, half note, half note, half note, half note, half note, half note. Bass clef: whole rest, half note, half note, half note, half note, half note, half note, half note, half note, half note. Dynamics: *f*, *p*.

245

Measures 245-249. Treble clef: half note, half note, half note, half note, half note, half note, half note, half note, half note, half note. Bass clef: half note, half note, half note, half note, half note, half note, half note, half note, half note, half note.

250

Measures 250-254. Treble clef: half note, half note, half note, half note, half note, half note, half note, half note, half note, half note. Bass clef: half note, half note, half note, half note, half note, half note, half note, half note, half note, half note. Dynamics: *f*, *ff*, *mf*.

String Quartet, Opus 59 No. 1 - 9

257

Measures 257-261. The treble staff has whole rests. The bass staff features a melodic line with a crescendo (*cresc.*) and a piano (*p*) dynamic marking.

262

Measures 262-264. Both staves feature continuous sixteenth-note passages.

265

Measures 265-267. The treble staff has continuous sixteenth-note passages, with a crescendo (*cresc.*) in measure 266. The bass staff has a steady eighth-note accompaniment.

268

Measures 268-270. Both staves feature chords in a steady eighth-note pattern.

271

Measures 271-273. Both staves feature chords in a steady eighth-note pattern. A forte (*f*) dynamic marking is present in measure 272.

274

Measures 274-276. Both staves feature chords in a steady eighth-note pattern. A fortissimo (*ff*) dynamic marking is in measure 274, and a decrescendo (*decresc.*) is indicated in measure 276.

String Quartet, Opus 59 No. 1 - 10

277

poco rit. *a tempo* *dolce*

282

286

p

290

cresc. *p* *cresc.*

294

f *sf* *sf*

298

p *sfp* *sfp*

String Quartet, Opus 59 No. 1 - 11

304

sfp

tr

310

cresc.

sfp

315

sfp

sfp

sfp

cresc.

320

p

325

cresc.

330

f

p

String Quartet, Opus 59 No. 1 - 12

334

f *p*

342

cresc. *f*

347

ff sf sf sf sf

353

sf sf

358

poco rit. *a tempo* *p* *sfp*

364

f *p*

String Quartet, Opus 59 No. 1 - 13

370

fp *p* *fp* *p*

376

cresc.

380

f

384

ff *decresc.* *p*

388

sfp *sfp* *decresc.*

392

pp *f*

String Quartet, Opus 59 No. 1 - 14

Allegretto vivace e sempre scherzando

4

pp

4

pp

11

4

cresc.

4

20

f

p dolce

f

29

ff

sf

sf

p

36

2

fp

2

44

cresc.

f

p

cresc.

sf

String Quartet, Opus 59 No. 1 - 15

53

53

p *pp* *sf* *p*

60

60

sf *p* *pp* *pp*

69

69

pp

78

78

tr *pp*

86

86

f *sf* *sf* *sf*

95

95

sf *pp*

String Quartet, Opus 59 No. 1 - 16

100

106

111

119

127

134

String Quartet, Opus 59 No. 1 - 17

141

Measures 141-146 of the String Quartet, Opus 59 No. 1. The music is in G minor (three flats). Measures 141-142 feature a piano introduction with a *cresc.* marking. Measures 143-144 are marked *f* (forte). Measures 145-146 are marked *sf* (sforzando). The texture is dense with many sixteenth and thirty-second notes.

147

Measures 147-152. Measures 147-148 are marked *p* (piano). Measures 149-150 are marked *pp* (pianissimo). The music continues with intricate rhythmic patterns.

153

Measures 153-157. Measures 153-154 are marked *cresc.*. Measures 155-156 are marked *fp* (forzando). The music features a mix of eighth and sixteenth notes.

158

Measures 158-162. This system shows a continuation of the complex rhythmic texture with various rests and active lines in both staves.

163

Measures 163-169. Measures 163-164 are marked *cresc.*. Measures 165-166 are marked *f*. Measures 167-168 are marked *ff* (fortissimo). The music builds in intensity.

170

Measures 170-174. Measures 170-171 are marked *p dolce* (piano dolce). The music becomes more lyrical with longer note values and slurs.

String Quartet, Opus 59 No. 1 - 18

177

pp *poco rit. decresc.* *a tempo sf* *p*

186

poco rit. decresc. *a tempo*

193

ff *sf*

200

sf

207

p

212

pp *p*

String Quartet, Opus 59 No. 1 - 19

218

225

231

236

244

251

String Quartet, Opus 59 No. 1 - 20

259

p *cresc.* *f* *ff*

268

sf *p* *2* *2* *fp*

277

f *p*

286

cresc. *f* *p* *pp*

294

< sf *p* *> sf* *p* *pp* *>*

304

> *<* *3* *3*

String Quartet, Opus 59 No. 1 - 21

315

pp

324

sf sf sf ff

330

sf sf pp

336

ff sf sf

342

sf sfp sf sf sf sf sf sf

348

sf sf sf f

String Quartet, Opus 59 No. 1 - 22

355

f *p* *sf* *p*

363

p *f*

370

sf *sf* *p*

375

p *dolce* *sf*

382

p *sf* *sf*

387

p *pp*

String Quartet, Opus 59 No. 1 - 23

394

fp

399

p

405

412

cresc.

f

418

ff

p

pp

425

p

pp

String Quartet, Opus 59 No. 1 - 24

433

cresc.

439

f *p dolce* *ff*

448

p poco rit. *a tempo* *pp*

455

462

469

ff *f*

String Quartet, Opus 59 No. 1 - 25

Adagio molto e mesto

Measures 1-7 of the musical score. The key signature is three flats (B-flat, E-flat, A-flat) and the time signature is 2/4. The music is written for a string quartet (Violin I, Violin II, Viola, and Cello/Double Bass). The first system shows measures 1 through 7. Dynamics include *p* (piano), *cresc.* (crescendo), *p* (piano), *f* (forte), and *sf* (sforzando). The tempo/mood is Adagio molto e mesto.

Measures 8-12 of the musical score. The key signature is three flats (B-flat, E-flat, A-flat) and the time signature is 2/4. The music is written for a string quartet (Violin I, Violin II, Viola, and Cello/Double Bass). The second system shows measures 8 through 12. Dynamics include *p* (piano) and *tr* (trill). The tempo/mood is Adagio molto e mesto.

Measures 13-18 of the musical score. The key signature is three flats (B-flat, E-flat, A-flat) and the time signature is 2/4. The music is written for a string quartet (Violin I, Violin II, Viola, and Cello/Double Bass). The third system shows measures 13 through 18. Dynamics include *p* (piano), *f* (forte), *p* (piano), and *cresc.* (crescendo). The tempo/mood is Adagio molto e mesto.

Measures 19-24 of the musical score. The key signature is three flats (B-flat, E-flat, A-flat) and the time signature is 2/4. The music is written for a string quartet (Violin I, Violin II, Viola, and Cello/Double Bass). The fourth system shows measures 19 through 24. Dynamics include *sf* (sforzando), *sf* (sforzando), *f* (forte), and *p* (piano). The tempo/mood is Adagio molto e mesto.

Measures 25-27 of the musical score. The key signature is three flats (B-flat, E-flat, A-flat) and the time signature is 2/4. The music is written for a string quartet (Violin I, Violin II, Viola, and Cello/Double Bass). The fifth system shows measures 25 through 27. The tempo/mood is Adagio molto e mesto.

Measures 28-30 of the musical score. The key signature is three flats (B-flat, E-flat, A-flat) and the time signature is 2/4. The music is written for a string quartet (Violin I, Violin II, Viola, and Cello/Double Bass). The sixth system shows measures 28 through 30. Dynamics include *sfp* (sforzando piano). The tempo/mood is Adagio molto e mesto.

String Quartet, Opus 59 No. 1 - 26

31

Example 31

33

cresc.

35



Measures 35-38 of the musical score. Measures 35 and 36 feature a complex texture with multiple sixteenth-note patterns in both hands. Measures 37 and 38 show a change in texture with sustained notes and dynamic markings (*f*, *p*).

38

The image shows a musical score for measures 38 and 39. The key signature is B-flat major (two flats) and the time signature is 3/4. The score is written for piano, with a treble clef and a bass clef. In measure 38, the treble staff has a whole rest, and the bass staff has a complex rhythmic pattern. In measure 39, the treble staff has a whole rest, and the bass staff has a complex rhythmic pattern.

41

pp

[illegible]

String Quartet, Opus 59 No. 1 - 27

52

cresc.

55

ff sf p

59

61

63

cresc.

65

f p

String Quartet, Opus 59 No. 1 - 28

68

poco rit.

71

a tempo

76

a tempo

78

cresc.

80

p *cresc.* *sfp*

82

cresc. *sfp*

String Quartet, Opus 59 No. 1 - 29

84

6 6 6 6 6 6

86

6 6 6 6 6 6 *cresc.*

88

6 6 6 6 6 6 *cresc.*

90

f 6 6 6 6 6 6 *morendo p*

92

cresc. *f*

95

f *p*

String Quartet, Opus 59 No. 1 - 30

99

Measures 99-101. The music is in G major (one sharp) and 3/4 time. Measure 99 features a treble staff with eighth-note chords and a bass staff with a steady eighth-note accompaniment. Measure 100 continues the treble staff's pattern. Measure 101 shows a change in the bass staff, marked with *sfp* (sforzando piano).

102

Measures 102-104. Measure 102 has a treble staff with a half rest and a bass staff with a half note, marked *sfp*. Measure 103 continues the bass staff's half note, also marked *sfp*. Measure 104 features a treble staff with a half note and a bass staff with a half note.

105

Measures 105-107. Measure 105 has a treble staff with a half rest and a bass staff with a half note. Measure 106 features a treble staff with eighth-note chords and a bass staff with eighth-note chords. Measure 107 continues the treble staff's eighth-note chords and a bass staff with eighth-note chords.

107

Measures 107-110. Measure 107 features a treble staff with eighth-note chords and a bass staff with eighth-note chords, marked *cresc.* (crescendo). Measure 108 continues the treble staff's eighth-note chords and a bass staff with eighth-note chords. Measure 109 features a treble staff with a half note and a bass staff with a half note, marked *sf* (sforzando). Measure 110 features a treble staff with a half note and a bass staff with a half note, marked *f* (forte).

110

Measures 110-113. Measure 110 features a treble staff with a half note and a bass staff with a half note, marked *p* (piano). Measure 111 features a treble staff with a half note and a bass staff with a half note. Measure 112 features a treble staff with a half note and a bass staff with a half note. Measure 113 features a treble staff with a half note and a bass staff with a half note.

113

Measures 113-116. Measure 113 features a treble staff with a half note and a bass staff with a half note. Measure 114 features a treble staff with a half note and a bass staff with a half note. Measure 115 features a treble staff with a half note and a bass staff with a half note. Measure 116 features a treble staff with a half note and a bass staff with a half note.

String Quartet, Opus 59 No. 1 - 31

115

117

120

122

124

129

String Quartet, Opus 59 No. 1 - 32

133

Allegro

Measures 133-141. The piece begins with a piano (*p*) dynamic. The bass line features a series of eighth-note patterns, while the treble line has rests followed by a melodic entry in measure 141. A trill (*tr*) is marked in the bass line at the end of measure 141.

142

Measures 142-150. The bass line continues with eighth-note patterns and trills (*tr*). The treble line has rests followed by a melodic entry in measure 149. Dynamics include piano (*p*), crescendo (*cresc.*), and forte (*f*).

151

Measures 151-155. The bass line features a continuous eighth-note pattern. The treble line has a melodic line with eighth notes. Dynamics include *sf* (sforzando) and *ff* (fortissimo).

156

Measures 156-160. The bass line has a melodic line with eighth notes. The treble line features a continuous eighth-note pattern. A piano (*p*) dynamic is marked in measure 157.

161

Measures 161-167. The bass line has a melodic line with eighth notes. The treble line features a continuous eighth-note pattern. Dynamics include crescendo (*cresc.*) and fortissimo (*ff*).

168

Measures 168-175. The bass line has a melodic line with eighth notes. The treble line features a continuous eighth-note pattern. A sforzando (*sf*) dynamic is marked in measure 175.

176

Measures 176-180. The bass line has a melodic line with eighth notes. The treble line features a continuous eighth-note pattern. Dynamics include sforzando (*sf*) and piano (*p*) dolce.

String Quartet, Opus 59 No. 1 - 33

185

185

cresc. *dim.* *pp*

197

197

ff *poco rit. pp*

204

204

a tempo cresc. *f*

210

210

p

215

215

cresc. *f*

221

221

ff *dim.*

226

226

p *pp*

String Quartet, Opus 59 No. 1 - 34

232

239

244

249

254

259

264

String Quartet, Opus 59 No. 1 - 35

269

cresc. *f*

274

f

280

f

286

sf sf ff

291

dim. *p*

296

pp *pp*

303

pp *p*

String Quartet, Opus 59 No. 1 - 36

311

pp p

319

f ff sf

324

p

330

p

335

p cresc. ff

342

sf sf sf

349

p

String Quartet, Opus 59 No. 1 - 37

358

pp

369

ff

375

poco rit.
pp
a tempo *cresc.*

381

f
p

386

cresc.
f sf

392

ff

398

pp

String Quartet, Opus 59 No. 1 - 38

406

413 *cresc.*

421 *f* *tr*

426 *tr* *ff* *sf* *sf* *sf* *sf* *sfp* *tr* *sf*

434 *tr* *sf* *sf* *f* *tr* *sf* *sf* *sf*

Adagio ma non troppo

441 *ff* *p* *ppp*

Presto

451 *ff*

Detailed description of the musical score: The score is for a string quartet, Opus 59 No. 1, measures 406-451. It is written in G major and 2/4 time. The notation is for a single instrument, likely the first violin, with a grand staff (treble and bass clefs). The key signature has one sharp (F#). The score is divided into several systems. The first system (measures 406-412) shows a melodic line with eighth and sixteenth notes. The second system (measures 413-420) features a crescendo and a tremolo in the right hand. The third system (measures 421-425) has a fortissimo (f) dynamic and a tremolo. The fourth system (measures 426-433) includes fortissimo (ff), sfz (sf), and sfz (sf) dynamics, along with a tremolo. The fifth system (measures 434-440) continues with sfz (sf), sfz (sf), and sfz (sf) dynamics, and a tremolo. The sixth system (measures 441-450) is marked 'Adagio ma non troppo' and features dynamics of ff, p, and ppp. The seventh system (measures 451-458) is marked 'Presto' and features a fortissimo (ff) dynamic. The score ends with a double bar line.

Piano 2

String Quartet

arranged for two pianos

Beethoven, Opus 59 No. 2

Allegro

7

14

17

21

f *pp* *pp* *p* *p* *sf* *sf* *f*

String Quartet, Opus 59 No. 2 - 2

25

cresc. *ff* *sf*

28

sf *sf* *sf*

31

f *sf*

35

p

39

43

p *dolce*

String Quartet, Opus 59 No. 2 - 3

46

f sf sf sf

51

p dolce f sf sf sf

56

61

cresc. f

66

69

ff

seguiranno pause

String Quartet, Opus 59 No. 2 - 4

72

2

pp

ff

pp

80

pp

ff

pp

86

pp

ff

pp

90

pp

cresc.

95

pp

f

p

pp

101

cresc.

f

String Quartet, Opus 59 No. 2 - 5

107

ff

110

113

pp

117

poco rit.

123

a tempo *cresc.*

126

ff *sf*

String Quartet, Opus 59 No. 2 - 6

129

sf *tr* *sf* *tr*

133

tr *tr* *tr* *tr* *tr* *tr* *tr* *tr*

137

tr *tr* *tr* *tr* *tr* *tr* *tr* *tr* *p*

141

ff *p* *pp* *pp*

147

sf *p* *sf*

153

p

String Quartet, Opus 59 No. 2 - 7

157

Measures 157-159. The music is in G major (one sharp). Measure 157 has a whole rest in the treble and a half note G in the bass. Measure 158 has a half note G in the treble and a half note G in the bass. Measure 159 has a half note G in the treble and a half note G in the bass, with a *cresc.* marking above the bass line.

160

Measures 160-163. Measure 160 has a half note G in the treble and a half note G in the bass, with a *f* marking below the bass line. Measure 161 has a half note G in the treble and a half note G in the bass, with a *ff* marking below the bass line. Measure 162 has a half note G in the treble and a half note G in the bass, with a *tr* marking above the treble line. Measure 163 has a half note G in the treble and a half note G in the bass, with a *sf* marking below the bass line.

164

Measures 164-167. Measure 164 has a half note G in the treble and a half note G in the bass, with a *tr* marking above the treble line. Measure 165 has a half note G in the treble and a half note G in the bass, with a *sf* marking below the bass line. Measure 166 has a half note G in the treble and a half note G in the bass. Measure 167 has a half note G in the treble and a half note G in the bass.

168

Measures 168-172. Measure 168 has a half note G in the treble and a half note G in the bass, with a *sf* marking below the bass line. Measure 169 has a half note G in the treble and a half note G in the bass. Measure 170 has a half note G in the treble and a half note G in the bass, with a *p* marking below the bass line. Measure 171 has a half note G in the treble and a half note G in the bass. Measure 172 has a half note G in the treble and a half note G in the bass.

173

Measures 173-176. Measure 173 has a half note G in the treble and a half note G in the bass. Measure 174 has a half note G in the treble and a half note G in the bass. Measure 175 has a half note G in the treble and a half note G in the bass. Measure 176 has a half note G in the treble and a half note G in the bass.

177

Measures 177-180. Measure 177 has a half note G in the treble and a half note G in the bass. Measure 178 has a half note G in the treble and a half note G in the bass. Measure 179 has a half note G in the treble and a half note G in the bass. Measure 180 has a half note G in the treble and a half note G in the bass.

String Quartet, Opus 59 No. 2 - 8

180

183

186

189

193

197

String Quartet, Opus 59 No. 2 - 9

202

202

f

sf

206

sf

sf

sf

209

p

f

1.

2.

210

ff

p

pp

216

f

p

222

String Quartet, Opus 59 No. 2 - 10

228

pp *cresc.*

233

ff

239

pp *e.*

245

cresc.

248

f

251

ff *p*

String Quartet, Opus 59 No. 2 - 11

Adagio molto e mesto

Si tratta questo pezzo con molto di sentimento

Piano 1

p

7

f

p

13

cresc.

f

p

19

22

cresc.

f

p

25

cresc.

p

String Quartet, Opus 59 No. 2 - 12

29

33

37

41

46

51

String Quartet, Opus 59 No. 2 - 13

56

pp *f* *ff* *f* *p*

60

63

pp

66

cresc. *f*

69

ff *p*

71

f *p*

Detailed description of the musical score: The score is for a string quartet, specifically the 13th movement of Opus 59 No. 2. It spans measures 56 to 71. The key signature is G major (one sharp). The time signature is 3/4. The notation is for piano and bass staves. Measure 56 starts with a piano (*pp*) dynamic, followed by a crescendo to forte (*f*), then fortissimo (*ff*), followed by a decrescendo to forte (*f*), and finally piano (*p*). The music features various articulations, including accents and slurs. Measures 60-62 show complex rhythmic patterns with triplets and sixteenth-note runs. Measure 63 starts with a piano (*pp*) dynamic. Measures 66-68 show a crescendo leading to forte (*f*). Measures 69-70 show a fortissimo (*ff*) dynamic, followed by a decrescendo to piano (*p*). Measure 71 starts with a forte (*f*) dynamic, followed by a decrescendo to piano (*p*). The piece concludes with a final measure at measure 71.

String Quartet, Opus 59 No. 2 - 14

74

3 3 3 3 3 3

f *p*

78

f *p*

83

pp *f* *p*

86

89

f

92

p *tr*

String Quartet, Opus 59 No. 2 - 15

95

98

101

105

109

112

String Quartet, Opus 59 No. 2 - 16

116

p

f

120

cresc.

f

123

p

129

p

132

p

135

cresc.

p

String Quartet, Opus 59 No. 2 - 17

138

ff sf sf sf sf sf

143

sf p

147

3 3 3 3 3 3 3 3 3 3

150

dim.

154

3 3 3 3 3 3 3 3

String Quartet, Opus 59 No. 2 - 18

Allegretto

pp

6

cresc.

f

p

pp

1.

2.

p

pp

10

p

15

sf

f

21

ff

ff

p

27

ff

ff

ff

String Quartet, Opus 59 No. 2 - 19

33

39

45

52

52

57

String Quartet, Opus 59 No. 2 - 20

63

63

sf *p* *cresc.* *sf*

70

p *cresc.*

74

p *cresc.* *p*

78

p *cresc.*

83

p *cresc.*

89

p *cresc.*

String Quartet, Opus 59 No. 2 - 21

95

f

101

ff

107

sf *sf* *sf* *sf*

113

sf *sf* *sf* *sf* *p* *legato*

120

128

D.C. al Fine

dim. *pp*

String Quartet, Opus 59 No. 2 - 22

Presto

Measures 1-5 of the musical score. The piece is in G major and 2/4 time. The first system consists of two staves. The upper staff (bass clef) features a series of chords, mostly triads and dyads, with some eighth-note movement. The lower staff (bass clef) has a steady eighth-note accompaniment. A dynamic marking of *fp* (fortissimo piano) is placed above the first measure of the lower staff.

Measures 6-10 of the musical score. The first system continues with the same texture. In measure 8, a *cresc.* (crescendo) marking appears above the lower staff. The second system (measures 9-10) shows the upper staff moving to a treble clef. A *fp* marking is present above the first measure of the second system's lower staff.

Measures 11-15 of the musical score. The first system (measures 11-15) shows the upper staff in treble clef and the lower staff in bass clef. The texture remains consistent with the previous measures, featuring chords in the upper part and eighth-note accompaniment in the lower part.

Measures 16-20 of the musical score. The first system (measures 16-20) continues the piece. A *fp* marking is placed above the first measure of the lower staff in the second system (measures 19-20).

Measures 21-25 of the musical score. The first system (measures 21-25) shows the upper staff in treble clef. A *fp* marking is placed above the first measure of the lower staff in the second system (measures 24-25).

Measures 26-30 of the musical score. The first system (measures 26-30) shows the upper staff in treble clef. The texture continues with chords in the upper part and eighth-note accompaniment in the lower part.

String Quartet, Opus 59 No. 2 - 23

31

fp

36

fp

41

cresc.

46

f

51

f

56

tr

String Quartet, Opus 59 No. 2 - 24

61

Measures 61-65 of the String Quartet, Opus 59 No. 2. The system shows five measures. The treble clef part has rests in measures 61, 62, 64, and 65, with a single eighth note in measure 63. The bass clef part features a melodic line with a trill in measure 61, a half note in measure 62, and a series of eighth notes in measures 63, 64, and 65. Dynamics include *tr* and *sf*.

66

Measures 66-70 of the String Quartet, Opus 59 No. 2. The system shows five measures. The treble clef part has chords in measures 66, 67, and 68, followed by eighth notes in measures 69 and 70. The bass clef part has a steady eighth-note accompaniment in measures 66, 67, and 68, then rests in measures 69 and 70. Dynamics include *p*.

71

Measures 71-76 of the String Quartet, Opus 59 No. 2. The system shows six measures. The treble clef part has eighth-note patterns in measures 71, 72, 74, 75, and 76, with a half note in measure 73. The bass clef part has a steady eighth-note accompaniment throughout. Dynamics include *p*.

77

Measures 77-82 of the String Quartet, Opus 59 No. 2. The system shows six measures. The treble clef part has eighth-note patterns in measures 77, 78, 80, 81, and 82, with a half note in measure 79. The bass clef part has a steady eighth-note accompaniment throughout. Dynamics include *cresc.* and *p*.

83

Measures 83-87 of the String Quartet, Opus 59 No. 2. The system shows five measures. The treble clef part has eighth-note patterns in measures 83, 84, 86, 87, and 88, with a half note in measure 85. The bass clef part has a steady eighth-note accompaniment throughout. Dynamics include *pp*.

88

Measures 88-92 of the String Quartet, Opus 59 No. 2. The system shows five measures. The treble clef part has eighth-note patterns in measures 88, 89, 91, and 92, with a half note in measure 90. The bass clef part has a steady eighth-note accompaniment throughout. Dynamics include *pp*.

String Quartet, Opus 59 No. 2 - 25

93

Measures 93-97 of the String Quartet, Opus 59 No. 2. The score is in G major (one sharp) and 3/4 time. The first system shows measures 93-97. The treble clef part has a melodic line with eighth and quarter notes, while the bass clef part provides a harmonic accompaniment with eighth and quarter notes.

98

Measures 98-101 of the String Quartet, Opus 59 No. 2. The score continues from the previous system. The treble clef part features a melodic line with eighth and quarter notes, and the bass clef part provides a harmonic accompaniment with eighth and quarter notes.

102

Measures 102-105 of the String Quartet, Opus 59 No. 2. The score continues from the previous system. The treble clef part features a melodic line with eighth and quarter notes, and the bass clef part provides a harmonic accompaniment with eighth and quarter notes. A *cresc.* marking is present in measure 103.

106

Measures 106-109 of the String Quartet, Opus 59 No. 2. The score continues from the previous system. The treble clef part features a melodic line with eighth and quarter notes, and the bass clef part provides a harmonic accompaniment with eighth and quarter notes. A *fp* marking is present in measure 106.

110

Measures 110-114 of the String Quartet, Opus 59 No. 2. The score continues from the previous system. The treble clef part features a melodic line with eighth and quarter notes, and the bass clef part provides a harmonic accompaniment with eighth and quarter notes. A *cresc.* marking is present in measure 113.

115

Measures 115-118 of the String Quartet, Opus 59 No. 2. The score continues from the previous system. The treble clef part features a melodic line with eighth and quarter notes, and the bass clef part provides a harmonic accompaniment with eighth and quarter notes. A *fp* marking is present in measure 115.

String Quartet, Opus 59 No. 2 - 26

119

119

cresc.

124

124

fp

129

129

fp

134

134

cresc.

fp

139

139

cresc.

fp

144

144

ff

sf

sf

sf

String Quartet, Opus 59 No. 2 - 27

150

Measures 150-155. The music is in G major (one sharp). The right hand has whole rests. The left hand plays a continuous eighth-note pattern. Measure 150 starts with a fortissimo (*ff*) dynamic. Measure 155 ends with a sforzando (*sf*) dynamic and a fermata.

156

Measures 156-160. The right hand has whole rests. The left hand continues the eighth-note pattern. Measure 156 starts with a sforzando (*sf*) dynamic. Measure 160 ends with a sforzando (*sf*) dynamic and a fermata.

161

Measures 161-165. The right hand has whole rests. The left hand continues the eighth-note pattern. Measure 161 starts with a sforzando (*sf*) dynamic. Measure 165 ends with a sforzando (*sf*) dynamic and a fermata.

166

Measures 166-171. The right hand has whole rests. The left hand continues the eighth-note pattern. Measure 166 starts with a sforzando (*sf*) dynamic. Measure 171 ends with a fortissimo piano (*fp*) dynamic and a fermata.

172

Measures 172-177. The right hand has whole rests. The left hand continues the eighth-note pattern. Measure 172 starts with a pianissimo (*pp*) dynamic. Measure 177 ends with a crescendo (*cresc.*) dynamic and a fermata.

178

Measures 178-182. The right hand has whole rests. The left hand continues the eighth-note pattern. Measure 178 starts with a fortissimo (*ff*) dynamic. Measure 182 ends with a sforzando (*sf*) dynamic and a fermata.

String Quartet, Opus 59 No. 2 - 28

183

Measures 183-188. The music is in G major (one sharp). The treble clef part has whole rests for the first three measures, followed by eighth-note patterns. The bass clef part has eighth-note patterns throughout, with some beamed sixteenth notes in measures 184 and 185.

189

Measures 189-194. The treble clef part features eighth-note and quarter-note patterns, with a half note in measure 190. The bass clef part has eighth-note and quarter-note patterns, with a half note in measure 190.

195

Measures 195-201. The treble clef part has whole notes and half notes. The bass clef part includes trills (tr) in measures 195, 197, and 199, along with eighth-note and quarter-note patterns.

202

Measures 202-208. The treble clef part has whole notes and half notes. The bass clef part has whole notes and half notes. Measures 205, 206, and 207 feature fortissimo (sf) markings in the bass clef.

209

Measures 209-214. The treble clef part has whole notes and half notes. The bass clef part has eighth-note and quarter-note patterns. Measures 210 and 212 feature fortissimo (sf) markings in the bass clef.

215

Measures 215-220. The treble clef part has whole notes and half notes. The bass clef part has eighth-note and quarter-note patterns. Measure 215 features a piano (p) marking in the bass clef.

String Quartet, Opus 59 No. 2 - 29

222

Measures 222-227 of the String Quartet, Opus 59 No. 2. The score is in G major (one sharp) and 4/4 time. Measures 222-223 show a piano introduction with a half-note chord in the treble and a half-note chord in the bass. Measures 224-227 feature a melodic line in the treble with eighth-note and quarter-note patterns, and a supporting bass line with eighth-note and quarter-note patterns. A slur covers measures 224-227 in the treble.

228

Measures 228-233 of the String Quartet, Opus 59 No. 2. Measures 228-232 show a melodic line in the treble with eighth-note and quarter-note patterns, and a supporting bass line with eighth-note and quarter-note patterns. A slur covers measures 228-232 in the treble. Measure 233 features a forte (*f*) dynamic in the treble with a half-note chord, and a half-note chord in the bass.

234

Measures 234-241 of the String Quartet, Opus 59 No. 2. Measures 234-235 feature a forte (*f*) dynamic in the treble with a half-note chord, and a half-note chord in the bass. Measures 236-237 feature a piano (*p*) dynamic in the treble with a half-note chord, and a half-note chord in the bass. Measures 238-241 feature a forte (*f*) dynamic in the treble with a half-note chord, and a half-note chord in the bass. A slur covers measures 238-241 in the treble.

242

Measures 242-248 of the String Quartet, Opus 59 No. 2. Measures 242-243 feature a forte (*f*) dynamic in the treble with a half-note chord, and a half-note chord in the bass. Measures 244-245 feature a piano (*p*) dynamic in the treble with a half-note chord, and a half-note chord in the bass. Measures 246-248 feature a pianissimo (*pp*) dynamic in the treble with a half-note chord, and a half-note chord in the bass. A slur covers measures 246-248 in the treble.

249

Measures 249-255 of the String Quartet, Opus 59 No. 2. Measures 249-250 feature a melodic line in the treble with eighth-note and quarter-note patterns, and a supporting bass line with eighth-note and quarter-note patterns. A slur covers measures 249-250 in the treble. Measures 251-255 feature a melodic line in the treble with eighth-note and quarter-note patterns, and a supporting bass line with eighth-note and quarter-note patterns. A slur covers measures 251-255 in the treble.

256

Measures 256-262 of the String Quartet, Opus 59 No. 2. Measures 256-257 feature a melodic line in the treble with eighth-note and quarter-note patterns, and a supporting bass line with eighth-note and quarter-note patterns. A slur covers measures 256-257 in the treble. Measures 258-262 feature a melodic line in the treble with eighth-note and quarter-note patterns, and a supporting bass line with eighth-note and quarter-note patterns. A slur covers measures 258-262 in the treble.

String Quartet, Opus 59 No. 2 - 30

263

270

275

280

285

290

String Quartet, Opus 59 No. 2 - 31

295

295

f *ff*

301

301

307

307

313

313

p *p*

320

320

p *dim.*

327

327

pp

String Quartet, Opus 59 No. 2 - 32

334

cresc.

340

f *ff* *p* *cresc.*

348

f *ff* *p* *cresc.*

356

sf *p* *cresc.*

364

369

ff

String Quartet, Opus 59 No. 2 - 33

373



378

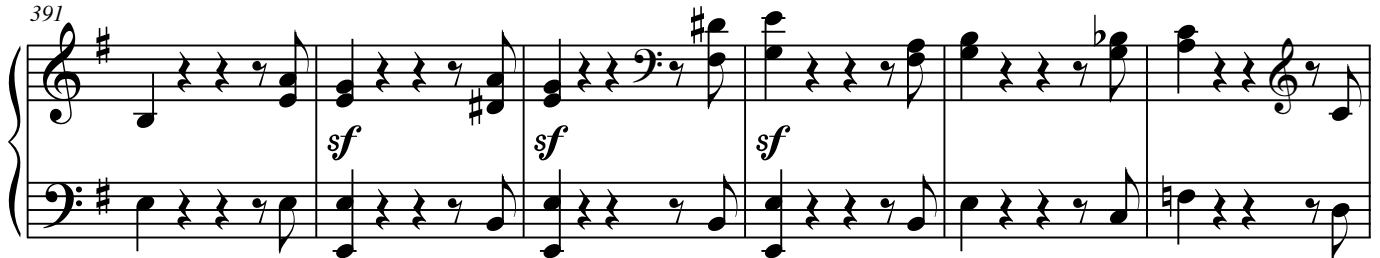


384

Piu presto



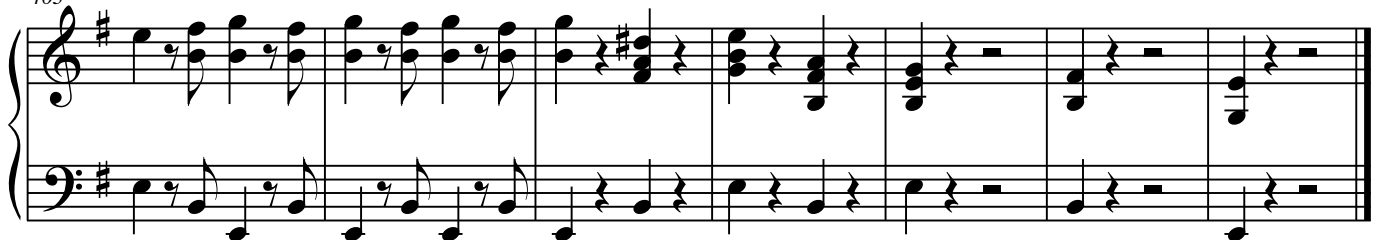
391



397



403



Piano 2

String Quartet

arranged for two pianos

Beethoven, Opus 59 No. 3

Andante con moto

Musical notation for measures 1-7 of the first system. The key signature has one flat (B-flat). The time signature is 3/4. The notation is for Piano 1, with a 'Piano 1' label. Dynamics include *pp* (pianissimo) and a trill (*tr*) in measure 7.

Musical notation for measures 8-16 of the second system. Dynamics include *f* (forte), *p* (piano), and *pp* (pianissimo).

Musical notation for measures 17-24 of the third system. A trill with a flat (*tr* b) is marked in measure 17.

Musical notation for measures 25-33 of the fourth system. The tempo changes to **Allegro**. The notation includes triplets (3) in measures 31 and 32.

Musical notation for measures 34-41 of the fifth system. The notation includes quadruplets (4) in measures 36 and 37, and dynamics *f* (forte), *p* (piano), *pp* (pianissimo), and *f* (forte).

String Quartet, Opus 59 No. 3 - 2

43

Measures 43-46. The system consists of two staves. The upper staff begins with a treble clef and a key signature of one sharp (F#). It contains a series of eighth and sixteenth notes, with dynamic markings *sf* (sforzando) appearing in measures 44, 45, and 46. The lower staff begins with a bass clef and contains a steady eighth-note accompaniment.

47

Measures 47-50. The system consists of two staves. The upper staff continues the melodic line with eighth and sixteenth notes. The lower staff continues the eighth-note accompaniment, with some measures featuring a half-note or whole-note accompaniment.

51

Measures 51-54. The system consists of two staves. The upper staff features a melodic line with eighth and sixteenth notes, including a trill marked *tr* in measure 53. The lower staff continues the eighth-note accompaniment.

55

Measures 55-59. The system consists of two staves. The upper staff has a melodic line with eighth and sixteenth notes. The lower staff features a steady eighth-note accompaniment. A dynamic marking *p* (piano) appears in measure 56 in the lower staff.

60

Measures 60-62. The system consists of two staves. The upper staff has a melodic line with eighth and sixteenth notes. The lower staff continues the eighth-note accompaniment.

63

Measures 63-66. The system consists of two staves. The upper staff has a melodic line with eighth and sixteenth notes. The lower staff continues the eighth-note accompaniment.

String Quartet, Opus 59 No. 3 - 3

67

Measures 67-71 of the String Quartet, Opus 59 No. 3 - 3. The system consists of two staves. The upper staff (treble clef) contains a melody with a dotted quarter note, an eighth note, and a half note, followed by a quarter note, a half note, and a quarter note. The lower staff (bass clef) contains a melody with a dotted quarter note, an eighth note, and a half note, followed by a quarter note, a half note, and a quarter note. There are two triplets marked with a '3' in the lower staff, one in measures 68 and 69, and another in measures 70 and 71.

72

Measures 72-74 of the String Quartet, Opus 59 No. 3 - 3. The system consists of two staves. The upper staff (treble clef) contains a melody with a dotted quarter note, an eighth note, and a half note, followed by a quarter note, a half note, and a quarter note. The lower staff (bass clef) contains a melody with a dotted quarter note, an eighth note, and a half note, followed by a quarter note, a half note, and a quarter note. The word *cresc.* is written above the lower staff in measure 73.

75

Measures 75-77 of the String Quartet, Opus 59 No. 3 - 3. The system consists of two staves. The upper staff (treble clef) contains a melody with a dotted quarter note, an eighth note, and a half note, followed by a quarter note, a half note, and a quarter note. The lower staff (bass clef) contains a melody with a dotted quarter note, an eighth note, and a half note, followed by a quarter note, a half note, and a quarter note. The word *f* is written below the lower staff in measures 75 and 77.

78

Measures 78-80 of the String Quartet, Opus 59 No. 3 - 3. The system consists of two staves. The upper staff (treble clef) contains a melody with a dotted quarter note, an eighth note, and a half note, followed by a quarter note, a half note, and a quarter note. The lower staff (bass clef) contains a melody with a dotted quarter note, an eighth note, and a half note, followed by a quarter note, a half note, and a quarter note. The word *p* is written below the lower staff in measure 78.

81

Measures 81-84 of the String Quartet, Opus 59 No. 3 - 3. The system consists of two staves. The upper staff (treble clef) contains a melody with a dotted quarter note, an eighth note, and a half note, followed by a quarter note, a half note, and a quarter note. The lower staff (bass clef) contains a melody with a dotted quarter note, an eighth note, and a half note, followed by a quarter note, a half note, and a quarter note. The word *f* is written below the lower staff in measure 81, and the word *p* is written below the upper staff in measure 82.

85

Measures 85-87 of the String Quartet, Opus 59 No. 3 - 3. The system consists of two staves. The upper staff (treble clef) contains a melody with a dotted quarter note, an eighth note, and a half note, followed by a quarter note, a half note, and a quarter note. The lower staff (bass clef) contains a melody with a dotted quarter note, an eighth note, and a half note, followed by a quarter note, a half note, and a quarter note. The word *pp* is written below the lower staff in measure 85, and the word *cresc.* is written above the lower staff in measure 86.

String Quartet, Opus 59 No. 3 - 4

88

90

94

98

102

106

String Quartet, Opus 59 No. 3 - 5

106 2.

p *cresc.*

110

p 5

119

p 5

123

pp 5

127

pp 5

131

cresc. *f*

String Quartet, Opus 59 No. 3 - 6

134

p

137

140

fp *cresc.*

145

148

f *ff*

151

p

String Quartet, Opus 59 No. 3 - 7

156

161

166

171

177

183

String Quartet, Opus 59 No. 3 - 8

190

194

197

201

204

211

String Quartet, Opus 59 No. 3 - 9

215

Measures 215-220. Measure 215: Treble clef has a half note G4, a quarter note A4, and an eighth note B4. Bass clef has a half note G2. Measure 216: Treble clef has a half note A4, a quarter note B4, and an eighth note C5. Bass clef has a half note A2. Measure 217: Treble clef has a half note B4, a quarter note C5, and an eighth note D5. Bass clef has a half note B2. Measure 218: Treble clef has a half note C5, a quarter note D5, and an eighth note E5. Bass clef has a half note C3. Measure 219: Treble clef has a half note D5, a quarter note E5, and an eighth note F5. Bass clef has a half note D3. Measure 220: Treble clef has a half note E5, a quarter note F5, and an eighth note G5. Bass clef has a half note E3. Dynamics: *p* (piano) at measure 217, *cresc.* (crescendo) at measure 219.

220

Measures 221-223. Measure 221: Treble clef has a half note G4, a quarter note A4, and an eighth note B4. Bass clef has a half note G2. Measure 222: Treble clef has a half note A4, a quarter note B4, and an eighth note C5. Bass clef has a half note A2. Measure 223: Treble clef has a half note B4, a quarter note C5, and an eighth note D5. Bass clef has a half note B2. Dynamics: *f* (forte) at measure 222.

223

Measures 224-226. Measure 224: Treble clef has a half note G4, a quarter note A4, and an eighth note B4. Bass clef has a half note G2. Measure 225: Treble clef has a half note A4, a quarter note B4, and an eighth note C5. Bass clef has a half note A2. Measure 226: Treble clef has a half note B4, a quarter note C5, and an eighth note D5. Bass clef has a half note B2. Dynamics: *p* (piano) at measure 224.

226

Measures 227-230. Measure 227: Treble clef has a half note G4, a quarter note A4, and an eighth note B4. Bass clef has a half note G2. Measure 228: Treble clef has a half note A4, a quarter note B4, and an eighth note C5. Bass clef has a half note A2. Measure 229: Treble clef has a half note B4, a quarter note C5, and an eighth note D5. Bass clef has a half note B2. Measure 230: Treble clef has a half note C5, a quarter note D5, and an eighth note E5. Bass clef has a half note C3. Dynamics: *f* (forte) at measure 228, *p* (piano) at measure 230.

230

Measures 231-235. Measure 231: Treble clef has a half note G4, a quarter note A4, and an eighth note B4. Bass clef has a half note G2. Measure 232: Treble clef has a half note A4, a quarter note B4, and an eighth note C5. Bass clef has a half note A2. Measure 233: Treble clef has a half note B4, a quarter note C5, and an eighth note D5. Bass clef has a half note B2. Measure 234: Treble clef has a half note C5, a quarter note D5, and an eighth note E5. Bass clef has a half note C3. Measure 235: Treble clef has a half note D5, a quarter note E5, and an eighth note F5. Bass clef has a half note D3. Dynamics: *pp* (pianissimo) at measure 232, *cresc.* (crescendo) at measure 234.

235

Measures 236-240. Measure 236: Treble clef has a half note G4, a quarter note A4, and an eighth note B4. Bass clef has a half note G2. Measure 237: Treble clef has a half note A4, a quarter note B4, and an eighth note C5. Bass clef has a half note A2. Measure 238: Treble clef has a half note B4, a quarter note C5, and an eighth note D5. Bass clef has a half note B2. Measure 239: Treble clef has a half note C5, a quarter note D5, and an eighth note E5. Bass clef has a half note C3. Measure 240: Treble clef has a half note D5, a quarter note E5, and an eighth note F5. Bass clef has a half note D3. Dynamics: *f* (forte) at measure 236, *p* (piano) at measure 240.

String Quartet, Opus 59 No. 3 - 10

238

242

244

248

253

260

String Quartet, Opus 59 No. 3 - 11

Andante con moto quasi Allegretto

1.

Measures 1-5 of the first system. The music is in 6/8 time. The first staff (treble clef) has a whole rest in measures 1-3, followed by a half note G4 in measure 4, and a half note F#4 in measure 5. The second staff (bass clef) has a whole rest in measures 1-3, followed by a half note G2 in measure 4, and a half note F#2 in measure 5. Dynamics: *f* in measure 1, *p* in measure 2, *cresc.* in measure 4.

Measures 6-11 of the first system. The first staff (treble clef) has a whole rest in measure 6, followed by a half note G4 in measure 7, and a half note F#4 in measure 8. The second staff (bass clef) has a whole rest in measure 6, followed by a half note G2 in measure 7, and a half note F#2 in measure 8. Dynamics: *f* in measure 7, *p* in measure 8, *f* in measure 9, *p* in measure 10.

Measures 12-17 of the first system. The first staff (treble clef) has a whole rest in measure 12, followed by a half note G4 in measure 13, and a half note F#4 in measure 14. The second staff (bass clef) has a whole rest in measure 12, followed by a half note G2 in measure 13, and a half note F#2 in measure 14. Dynamics: *sfp* in measure 13, *sfp* in measure 14, *sfp* in measure 15, *p* in measure 16.

Measures 18-21 of the first system. The first staff (treble clef) has a whole rest in measure 18, followed by a half note G4 in measure 19, and a half note F#4 in measure 20. The second staff (bass clef) has a whole rest in measure 18, followed by a half note G2 in measure 19, and a half note F#2 in measure 20. Dynamics: *f* in measure 19, *p* in measure 20, *p* in measure 21.

Measures 22-26 of the first system. The first staff (treble clef) has a whole rest in measure 22, followed by a half note G4 in measure 23, and a half note F#4 in measure 24. The second staff (bass clef) has a whole rest in measure 22, followed by a half note G2 in measure 23, and a half note F#2 in measure 24. Dynamics: *f* in measure 23, *p* in measure 24, *sfp* in measure 25.

String Quartet, Opus 59 No. 3 - 12

28

28

sfp *sfp* *sfp*

33

33

p sf *sf* *p sf* *sf*

38

38

sf *sf* *dim.*

43

43

sf *sf* *dim.*

48

48

cresc. *p*

53

53

dim.

String Quartet, Opus 59 No. 3 - 13

58

58

pp

sfp

sfp

sfp

63

sfp

sfp

sfp

68

sfp

73

cresc.

p

78

cresc.

f

sf

82

f

sf

p

String Quartet, Opus 59 No. 3 - 14

87

87

f *sf* *p* *f* *sf*

92

p *cresc.* *sf* *p* *cresc.* *sf*

97

p *sf* *sf* *dim.*

102

107

p

112

pp *f*

String Quartet, Opus 59 No. 3 - 15

118

p

123

p *sfp* *fp*

128

dim.

133

pp *f p*

138

143

fp p

String Quartet, Opus 59 No. 3 - 16

149

p *fp*

154

fp *fp* *fp*

159

p

164

168

sfp *sfp* *sfp*

172

p *f* *p*

String Quartet, Opus 59 No. 3 - 17

177

Measures 177-180. The treble staff features a continuous eighth-note pattern, while the bass staff provides a steady eighth-note accompaniment.

181

Measures 181-184. The treble staff begins with a forte (*f*) dynamic, followed by sforzando (*sf*) accents. The bass staff continues with a consistent eighth-note accompaniment.

185

Measures 185-189. The treble staff starts with a piano (*p*) dynamic, then crescendos to sforzando (*sf*) and fortissimo (*f*). The bass staff maintains its eighth-note accompaniment.

190

Measures 190-194. The treble staff begins with a piano (*p*) dynamic and features a continuous eighth-note pattern. The bass staff provides a steady eighth-note accompaniment.

195

Measures 195-198. The treble staff starts with a diminuendo (*dim.*) and then moves to pianissimo (*pp*). The bass staff continues with its eighth-note accompaniment.

199

Measures 199-202. The treble staff begins with a crescendo (*cresc.*), followed by a diminuendo (*dim.*) and then pianissimo (*pp*). The bass staff continues with its eighth-note accompaniment.

String Quartet, Opus 59 No. 3 - 18

Menuetto
Grazioso

1 2 3 4 5 6

p

7 8 9 10 11 12 13

14 15 16 17 18 19 20

tr

cresc.

f

21 22 23 24 25 26

p

27 28 29 30 31 32

cresc.

f

p

33 34 35 36 37 38 39 40

cresc.

f

p

To Coda

String Quartet, Opus 59 No. 3 - 19

39 Trio

39 *f* *fp p fp fp*

45

45 *fp p*

48

48 *p cresc.*

51

51 *sf sf sf* 1. *sf p*

54

54 *f sf sf p*

59

59 *f p f p*

String Quartet, Opus 59 No. 3 - 20

65

70

73

77 Coda

83

89

String Quartet, Opus 59 No. 3 - 21

Allegro molto

Musical notation for measures 1-5 of the first system. The treble clef staff contains a melodic line starting with a half note G4, followed by eighth notes A4, B4, C5, and D5. The bass clef staff contains a whole note G3. Measure 4 features a fermata over the G3 in the bass. Measure 5 begins with a piano (*p*) dynamic and a half note G4 in the treble. Above the treble staff in measure 4 is a '7' indicating a seven-measure rest, and above the bass staff in measure 4 is a '7' indicating a seven-measure rest.

Musical notation for measures 12-16 of the second system. The treble clef staff contains a melodic line with eighth and sixteenth notes. The bass clef staff contains a whole note G3. Measure 13 includes the instruction *cresc. poco a poco*. Measure 16 ends with a sharp sign (#) on the final note of the treble staff.

Musical notation for measures 17-20 of the third system. The treble clef staff contains a melodic line with eighth and sixteenth notes. The bass clef staff contains a whole note G3.

Musical notation for measures 21-24 of the fourth system. The treble clef staff contains a melodic line with eighth and sixteenth notes. The bass clef staff contains a melodic line with eighth and sixteenth notes.

Musical notation for measures 25-28 of the fifth system. The treble clef staff contains a whole note G4 in measure 25, followed by rests. The bass clef staff contains a melodic line with eighth and sixteenth notes.

String Quartet, Opus 59 No. 3 - 22

29

Measures 29-32. The system consists of two staves. The upper staff has whole rests for the first two measures, followed by eighth-note patterns in measures 3 and 4. The lower staff has continuous eighth-note patterns throughout. A forte (*f*) dynamic marking is present in measure 3.

33

Measures 33-37. The system consists of two staves. The upper staff has eighth-note patterns in measures 33-34, followed by dotted quarter notes in measures 35-37. The lower staff has eighth-note patterns in measures 33-34, followed by dotted quarter notes in measures 35-37.

38

Measures 38-43. The system consists of two staves. The upper staff has dotted quarter notes in measures 38-40, followed by eighth-note patterns in measures 41-43. The lower staff has dotted quarter notes in measures 38-40, followed by eighth-note patterns in measures 41-43.

44

Measures 44-48. The system consists of two staves. The upper staff has eighth-note patterns in measures 44-45, followed by dotted quarter notes in measures 46-48. The lower staff has eighth-note patterns in measures 44-45, followed by dotted quarter notes in measures 46-48. A fortissimo (*ff*) dynamic marking is present in measure 46.

49

Measures 49-53. The system consists of two staves. The upper staff has eighth-note patterns in measures 49-50, followed by dotted quarter notes in measures 51-53. The lower staff has eighth-note patterns in measures 49-50, followed by dotted quarter notes in measures 51-53. A sforzando (*sf*) dynamic marking is present in measure 49.

54

Measures 54-58. The system consists of two staves. The upper staff has eighth-note patterns in measures 54-55, followed by dotted quarter notes in measures 56-58. The lower staff has eighth-note patterns in measures 54-55, followed by dotted quarter notes in measures 56-58.

String Quartet, Opus 59 No. 3 - 23

59

67

73

78

83

88

String Quartet, Opus 59 No. 3 - 24

93

97

102

106

111

116

String Quartet, Opus 59 No. 3 - 25

120

124

128

133

137

143

String Quartet, Opus 59 No. 3 - 26

149

p

154

f

158

p

163

f

p

169

f

173

p

ff

sf

sf

String Quartet, Opus 59 No. 3 - 27

179

Measures 179-183. The system features a treble and bass staff. The treble staff begins with a treble clef, a key signature of one sharp (F#), and a common time signature. It contains a series of eighth-note runs and rests, with a forte (*sf*) dynamic marking. The bass staff contains whole notes and rests.

184

Measures 184-190. The system features a treble and bass staff. The treble staff contains chords and single notes, with a forte (*sf*) dynamic marking. The bass staff contains whole notes and half notes.

191

Measures 191-197. The system features a treble and bass staff. The treble staff contains chords and single notes, with a forte (*sf*) dynamic marking. The bass staff contains half notes and whole notes.

198

Measures 198-202. The system features a treble and bass staff. The treble staff contains eighth-note runs and chords, with a forte (*sf*) dynamic marking. The bass staff contains eighth-note runs and whole notes.

203

Measures 203-207. The system features a treble and bass staff. The treble staff contains eighth-note runs and whole notes. The bass staff contains eighth-note runs and whole notes.

208

Measures 208-213. The system features a treble and bass staff. The treble staff contains whole notes and half notes, with a forte (*ff*) dynamic marking. The bass staff contains whole notes and half notes.

String Quartet, Opus 59 No. 3 - 28

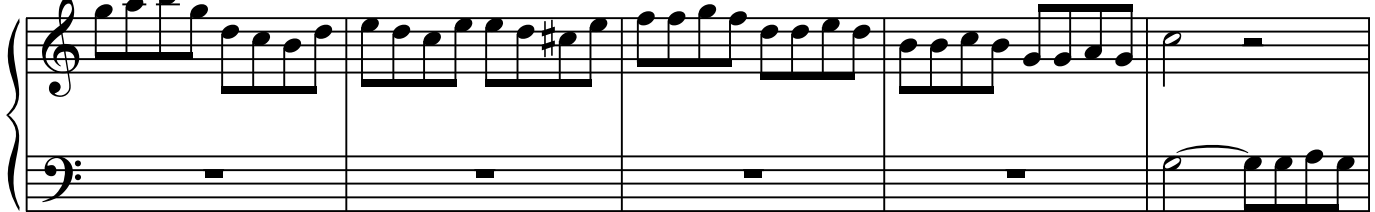
215



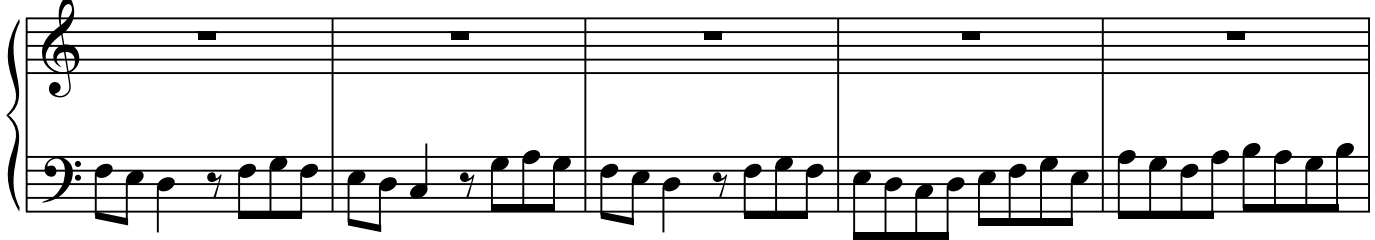
221



226



231



236



241



String Quartet, Opus 59 No. 3 - 29

248

253

258

263

267

273

String Quartet, Opus 59 No. 3 - 30

282

Measures 282-286 of the String Quartet, Opus 59 No. 3. The system consists of two staves. The upper staff (treble clef) features a long, sustained note in the first three measures, followed by a series of eighth notes in the last two measures. The lower staff (bass clef) has a whole rest in the first measure, followed by a series of eighth notes in the second and third measures, and a whole note in the fourth measure. A crescendo hairpin is visible in the upper staff between measures 285 and 286.

287

Measures 287-290 of the String Quartet, Opus 59 No. 3. The system consists of two staves. The upper staff (treble clef) has a series of eighth notes in the first measure, followed by a half note in the second measure, and a series of eighth notes in the third and fourth measures. The lower staff (bass clef) has a series of eighth notes in the first measure, followed by a half note in the second measure, and a series of eighth notes in the third and fourth measures.

290

Measures 291-293 of the String Quartet, Opus 59 No. 3. The system consists of two staves. The upper staff (treble clef) has a series of eighth notes in the first measure, followed by a half note in the second measure, and a series of eighth notes in the third and fourth measures. The lower staff (bass clef) has a series of eighth notes in the first measure, followed by a half note in the second measure, and a series of eighth notes in the third and fourth measures. A forte (*f*) dynamic marking is present in the first measure of the lower staff.

294

Measures 294-296 of the String Quartet, Opus 59 No. 3. The system consists of two staves. The upper staff (treble clef) has a series of eighth notes in the first measure, followed by a half note in the second measure, and a series of eighth notes in the third and fourth measures. The lower staff (bass clef) has a series of eighth notes in the first measure, followed by a half note in the second measure, and a series of eighth notes in the third and fourth measures. A piano (*p*) dynamic marking is present in the first measure of the upper staff.

297

Measures 297-299 of the String Quartet, Opus 59 No. 3. The system consists of two staves. The upper staff (treble clef) has a series of eighth notes in the first measure, followed by a half note in the second measure, and a series of eighth notes in the third and fourth measures. The lower staff (bass clef) has a series of eighth notes in the first measure, followed by a half note in the second measure, and a series of eighth notes in the third and fourth measures. A crescendo (*cresc.*) and fortissimo (*sf*) dynamic marking is present in the first measure of the upper staff, and a piano (*p*) dynamic marking is present in the second measure of the upper staff.

300

Measures 300-302 of the String Quartet, Opus 59 No. 3. The system consists of two staves. The upper staff (treble clef) has a series of eighth notes in the first measure, followed by a half note in the second measure, and a series of eighth notes in the third and fourth measures. The lower staff (bass clef) has a series of eighth notes in the first measure, followed by a half note in the second measure, and a series of eighth notes in the third and fourth measures. A crescendo (*cresc.*) dynamic marking is present in the first measure of the upper staff.

String Quartet, Opus 59 No. 3 - 31

303

303

ff

p

307

311

f

315

320

325

p

String Quartet, Opus 59 No. 3 - 32

332

cresc.

341

f *sf* *sf*

350

p *sf* *sf* *sf*

360

sf *sf* *sf*

370

sf *cresc.* *ff*

382

unison *ff*

String Quartet, Opus 59 No. 3 - 33

389

Piano I *p*

398

tr

405

tr

411

f

417

423

ff

