

# Timpani

## Alma de la Tierra

Fernando Giunta

### 1)Edem-Atuel y sus Amigos-Fiesta en la Aldea

Tranquilo  $\text{♩} = 76$

13

*mf*

Gliss.

16

*f*

rit..... a tempo

2 22

43

*p*

A

49

rit..... a tempo

11 1 rit..... a tempo  $\text{♩} = 116$

27

91

2 a tempo

B

98

*fp*

100

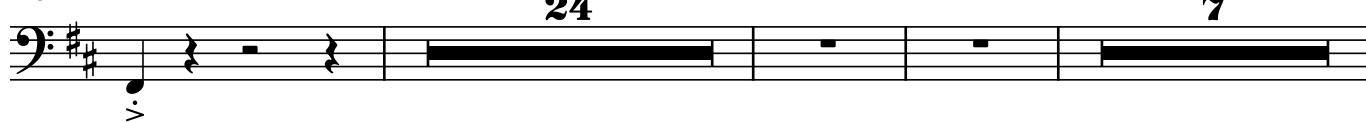
102

8

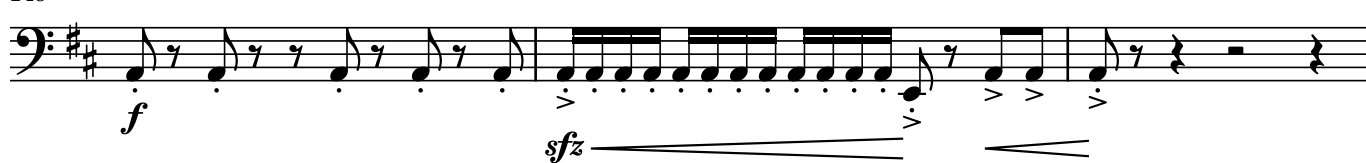
112



115



149



152



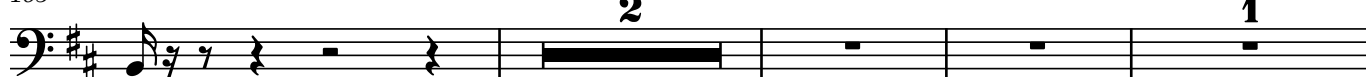
157



160



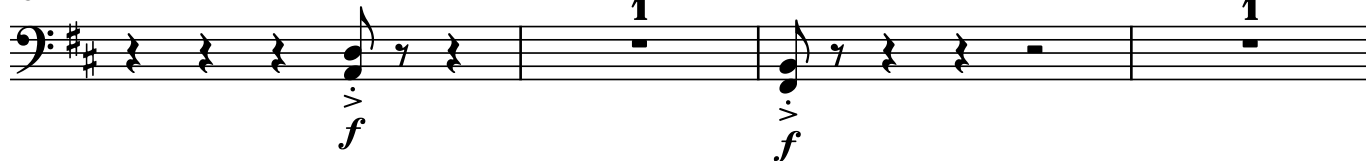
163



169



184



188



191 **E** Allegro  $\text{♩} = 86$   
71

265

270 17

290

294 8

305

309

313 **F** 8 2

325 4

332 5 4 1 rit.....

Allegretto  $\text{♩} = 82$  Timpani  
Tamb.

345 ..  $\text{♩} = 30$  **G**

25

374 22

399

403 1 *f* *mf*

407

412 12 **H** *f* *p*

427

432

437

442 **I**  $\text{♩} = 82$  *f*

447



451

**rit.**.....

♩ = 76



Timpani

# Alma de la Tierra

Fernando Giunta

## II-La Sequía

♩ = 66

**A** **B**

11 15

Gliss.

*fp*

28

**C** **D**

37 1 1

*mf* *p*

41 **E** **F** rit....

1 3 1 1

**G** **H** **I**

a tempo ♩ = 66 rit..... a tempo

3 3 1 15 3

Timpani

# Alma de la Tierra

Fernando Giunta

## 3-Guerra por las Tierras

$\text{♩} = 126$

*ff* *f* *rit.* *ciss.*

4 8 13 **A** a tempo 47 **B** **C** 63 67 71 7 81 *f* *f*

85 **D**

95

99

103 *ff*

107 **E** *f*

111 *ff*

115 14

132 **F** 11 *mf* *fp*

146 **G** *f*

150



154 **16**

173 *rit.* **H** **Allegro giusto**  $\text{♩} = 120$  **48**

*mf* *gliss.*

226 **I** **3** **5**

239

243

247

251 **J**

256 **3** **11** **24** **K**

295 **L**

299 **f** **19** **M** **f**

320

324 **19** **N** **8**

353 *f*

358 **4** **15** **3** rit.....  $\text{♩} = 80$

381 *f* *sfz* *mf* *tr* *f* *tr* *mf*

386 *molto rit.* *Lento*  $\text{♩} = 52$  *tr* *gliss* *tr*

392 **P** **Largo**  $\text{♩} = 56$

395 *mf*

398 *mf*

401 *mf*

404 **Q**

407 *molto rit.* *a tempo* *p* *ff*

Timpani

# 4-Alma de la Tierra

Fernando Giunta

## 4-Atuel y clara uyen a la momtaña-Sueña-El milagro

Andante  $\text{♩} = 54$  **19** rit..... a tempo **10** Gliss. rit.....  $\text{♩} = 92$  **1**

33  $\text{♩} = 100$  **2** **2** rit..... a tempo **4** rit..... **1** Andante  $\text{♩} = 58$

44 rit..... a tempo **5** **1** **5** rit..... a tempo **4** rit.....

61 ..... **B** rit.....  $\text{♩} = 62$  **2** **1** **7**

73 *Accel.*  $\text{♩} = 110$  **1** **3** **C** **2**  $\text{♩} = 110$  **2**

82 Vln. **D**  $\text{♩} = 120$  **E**

85 Violín **17** rit..... **4** a tempo

109 **1** rit..... a tempo **1** a tempo **6**

119 **F**

121 *mf*

122 **3** *f*

125



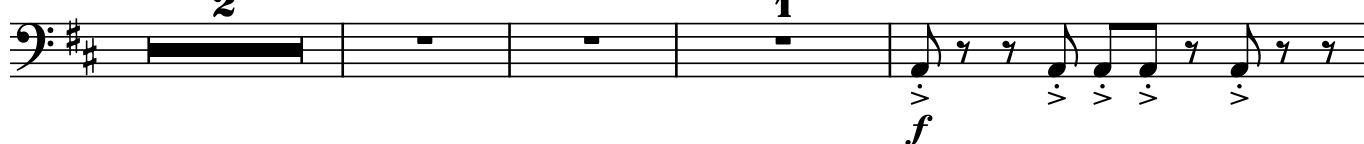
128



131



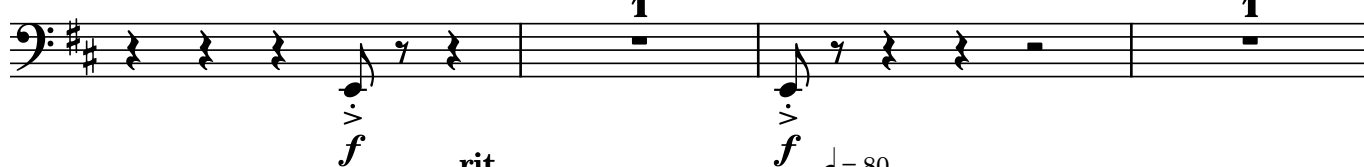
134



140



154



158



161



163



168



