

Piano Sonata in G Major, Op 49, No. 2

Cello

1. Allegro ma non troppo

Ludwig van Beethoven

Joshua Choe

Allegro ma non troppo

10

16

20

39

44

50

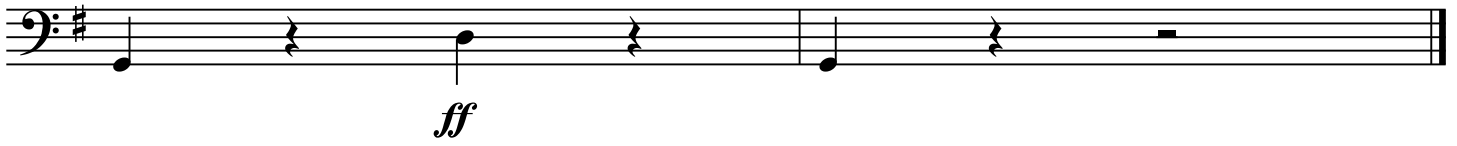
65

f *p* *cresc.* *f* *p* *f* *p* *f*

117

The musical score for the bass line of 'The Rose Tree' is written on a single staff with a bass clef and a key signature of one sharp (F#). The melody consists of a series of eighth-note triplets. The notes are: G2, A2, B2 (first triplet); A2, B2, C3 (second triplet); B2, A2, G2 (third triplet); G2, F#2, E2 (fourth triplet); E2, D2, C3 (fifth triplet); C3, B2, A2 (sixth triplet); A2, G2, F#2 (seventh triplet); F#2, E2, D2 (eighth triplet); D2, C3, B2 (ninth triplet); C3, B2, A2 (tenth triplet); A2, G2, F#2 (eleventh triplet); F#2, E2, D2 (twelfth triplet); D2, C3, B2 (thirteenth triplet); C3, B2, A2 (fourteenth triplet); A2, G2, F#2 (fifteenth triplet); F#2, E2, D2 (sixteenth triplet); D2, C3, B2 (seventeenth triplet); C3, B2, A2 (eighteenth triplet); A2, G2, F#2 (nineteenth triplet); F#2, E2, D2 (twentieth triplet); D2, C3, B2 (twenty-first triplet); C3, B2, A2 (twenty-second triplet); A2, G2, F#2 (twenty-third triplet); F#2, E2, D2 (twenty-fourth triplet); D2, C3, B2 (twenty-fifth triplet); C3, B2, A2 (twenty-sixth triplet); A2, G2, F#2 (twenty-seventh triplet); F#2, E2, D2 (twenty-eighth triplet); D2, C3, B2 (twenty-ninth triplet); C3, B2, A2 (thirtieth triplet); A2, G2, F#2 (thirty-first triplet); F#2, E2, D2 (thirty-second triplet); D2, C3, B2 (thirty-third triplet); C3, B2, A2 (thirty-fourth triplet); A2, G2, F#2 (thirty-fifth triplet); F#2, E2, D2 (thirty-six triplet); D2, C3, B2 (thirty-seventh triplet); C3, B2, A2 (thirty-eighth triplet); A2, G2, F#2 (thirty-ninth triplet); F#2, E2, D2 (fortieth triplet); D2, C3, B2 (forty-first triplet); C3, B2, A2 (forty-second triplet); A2, G2, F#2 (forty-third triplet); F#2, E2, D2 (forty-fourth triplet); D2, C3, B2 (forty-fifth triplet); C3, B2, A2 (forty-six triplet); A2, G2, F#2 (forty-seventh triplet); F#2, E2, D2 (forty-eighth triplet); D2, C3, B2 (forty-ninth triplet); C3, B2, A2 (fiftieth triplet). The score includes a 'cresc.' marking under the nineteenth triplet and a 'dim.' marking under the twenty-ninth triplet.

121



Piano Sonata No. 20 in G Major

Cello

2. Tempo di Menuetto

Ludwig van Beethoven
Joshua Choe

Tempo di Menuetto

p

6

13

6

6

f

f

29

33

10

47

p

53

60

6

f

f

71

p *f*

79

p *p*

90

p *p*

97

f

104

p *p* *p*

114

p *p*