

Markus-Passion

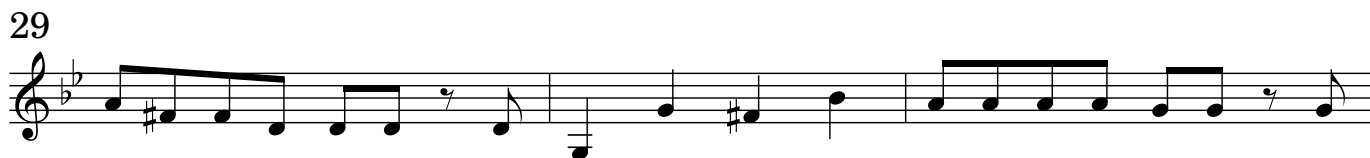
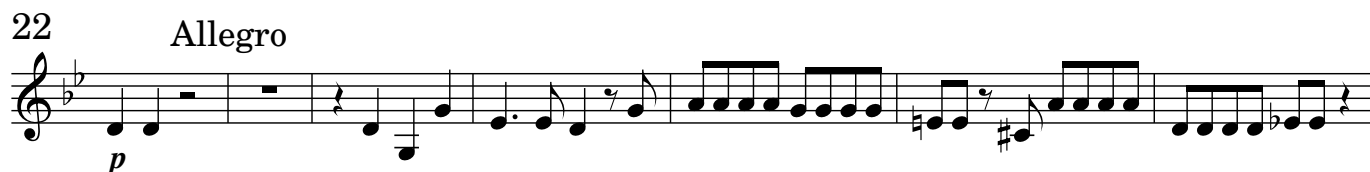
1

Parte prima
1. Sonata (Chor)

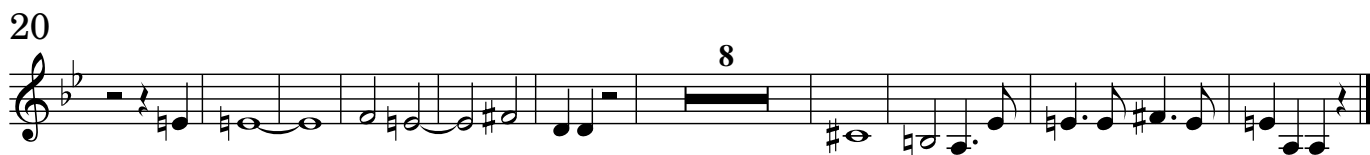
Violino 3 (Viola alto)

zugeschrieben:
Reinhard Keiser (1674-1739)

Adagio



2. Recitativo



3. Aria: tacet

4. Recitativo

Adagio

4

8

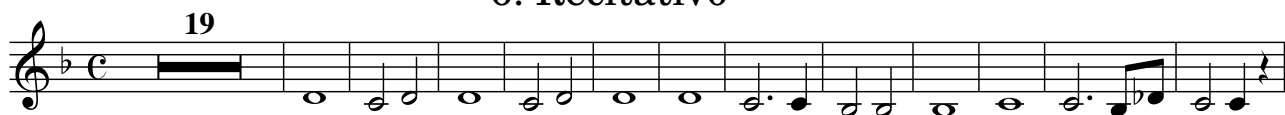
6

Detailed description: This block contains two staves of musical notation. The first staff starts at measure 4 and ends at measure 7. It begins with a treble clef, a key signature of one sharp (F#), and a common time signature (C). The notation consists of eighth notes, mostly beamed in pairs, with some slurs. The second staff starts at measure 8 and ends at measure 11. It also has a treble clef and a key signature of one sharp. It features a mix of eighth and sixteenth notes, with some slurs and a final double bar line.

5. Choral

Detailed description: This block contains eight staves of musical notation, numbered 5 through 23 on the left margin. All staves use a treble clef and a key signature of one sharp. The notation is primarily composed of eighth notes, often beamed in groups of four or six, and is frequently slurred across measures. The music flows continuously from measure 5 to measure 23, ending with a final double bar line at measure 23.

6. Recitativo



7. Recitativo: tacet

8. Aria: tacet

9. Recitativo



10. Recitativo: tacet

11. Chor



12. Recitativo



13. Chor



14. Recitativo: tacet

15. Chor



16. Recitativo: tacet

17. Aria: tacet

18. Sinfonia



19. Recitativo: tacet

20. Aria: tacet

21. Recitativo: tacet

22. Chor/ Recitativo/ Chor



23. Choral



Parte seconda
24. Sinfonia

Largo

6

11

14

19

Musical score for the 24th Symphony, Largo movement. The score is written on five staves, each with a treble clef and a key signature of one flat (B-flat). The time signature is 3/4. The first staff begins with a treble clef and a key signature of one flat. The second staff begins with a treble clef and a key signature of one flat. The third staff begins with a treble clef and a key signature of one flat. The fourth staff begins with a treble clef and a key signature of one flat. The fifth staff begins with a treble clef and a key signature of one flat. The score includes various musical notations such as notes, rests, and a repeat sign.

25. Recitativo: tacet

26. Chor

Alla breve

9

18

26

32

Musical score for the 26th Chor, Alla breve movement. The score is written on five staves, each with a treble clef and a key signature of one flat (B-flat). The time signature is 2/4. The first staff begins with a treble clef and a key signature of one flat. The second staff begins with a treble clef and a key signature of one flat. The third staff begins with a treble clef and a key signature of one flat. The fourth staff begins with a treble clef and a key signature of one flat. The fifth staff begins with a treble clef and a key signature of one flat. The score includes various musical notations such as notes, rests, and a repeat sign.

27. Recitativo: tacet

28. Aria

Poco allegro

Musical score for the Aria, measures 13 to 40. The key signature is B-flat major (two flats) and the time signature is 3/4. The score consists of four staves of music. Measure 13 is the first measure of the first staff. Measure 22 is the first measure of the third staff, which includes a measure rest for 10 measures. Measure 40 is the last measure of the fourth staff, ending with a fermata.

29. Recitativo: tacet

30. Aria: tacet

31. Recitativo: tacet

32. Aria: tacet

33. Recitativo: tacet

34. Chor

Allegro

Musical score for the Chor, measures 6 to 11. The key signature is B-flat major (two flats) and the time signature is common time (C). The score consists of three staves of music. Measure 6 is the first measure of the first staff. Measure 11 is the last measure of the third staff, ending with a fermata.

35. Recitativo: tacet

36. Chor

Andante

Allegro

9



14



19



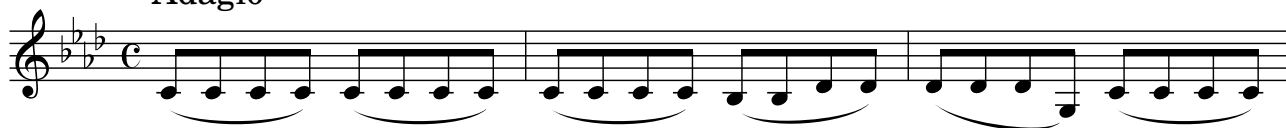
23



37. Recitativo: tacet

38. Aria

Adagio



4



39. Recitativo: tacet

40. Chor

Andante



5



7



41. Recitativo: tacet

42. Choral: tacet

43/44. Aria: tacet

45. Sinfonia

Adagio assai

Allegro

3



9



14



17



46. Recitativo: tacet

47. Aria

Adagio



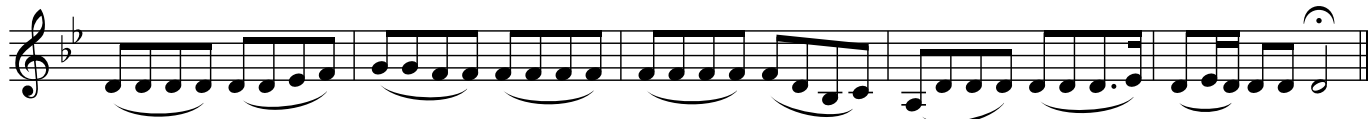
5



9



16



48. Recitativo: tacet

49. Choral



9



50. Chor

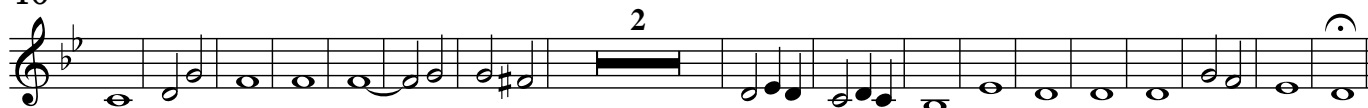
Alla breve



24



40



51. Choral



12



Presto

52. Chor



7



13

