

Sinfonía nº 27
en G mayor

I

Joseph Haydn

Allegro molto

First staff (measures 1-7): *f* (forte). Notes: G4 (half), A4 (quarter), B4 (quarter), C5 (half), D5 (quarter), E5 (quarter), F#5 (half).

Second staff (measures 8-14): Measure 8 has a whole rest. Measures 9-14 contain various notes and rests, including a dotted line in measure 13.

Third staff (measures 15-25): Measure 15 has a whole rest. Measures 16-17 have eighth notes. Measure 18 has a whole rest. Measure 19 has a whole note with a bracket labeled "6" above it. Measures 20-25 contain various notes and rests.

Fourth staff (measures 26-39): Measure 26 has a whole rest. Measure 27 has a whole note with a bracket labeled "9" above it. Measure 28 has a whole rest. Measure 29 has a half note with *f* (forte) below it. Measures 30-39 contain various notes and rests.

Fifth staff (measures 40-47): Measures 40-47 contain various notes and rests, including a dotted line in measure 43.

Sixth staff (measures 48-53): Measures 48-53 contain various notes and rests.

Seventh staff (measures 54-61): Measures 54-55 have eighth notes. Measure 56 has a whole rest. Measure 57 has a whole note with a bracket labeled "2" above it. Measures 58-61 contain various notes and rests, including a dotted line in measure 61.

Eighth staff (measures 62-67): Measures 62-67 contain various notes and rests, including a dotted line in measure 66.

Ninth staff (measures 68-75): Measures 68-75 contain various notes and rests, including a dotted line in measure 74.

Tenth staff (measures 76-82): Measures 76-82 contain various notes and rests, including a dotted line in measure 81.

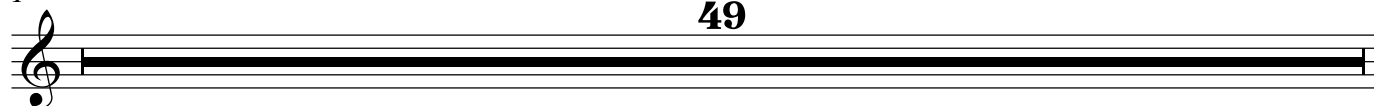
Eleventh staff (measures 83-89): Measures 83-89 contain various notes and rests, including a dotted line in measure 88.



f

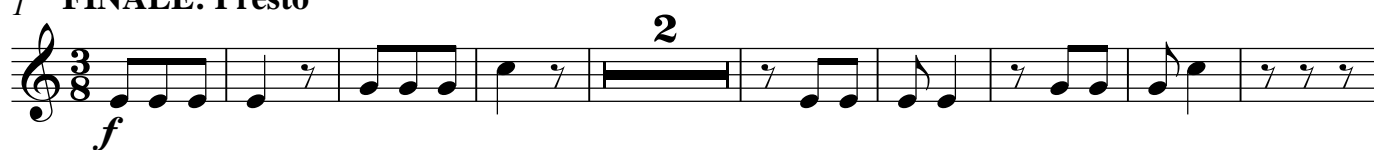
II
TACET
49

1 **Andante: Siciliano**



1 **FINALE: Presto**

III



f

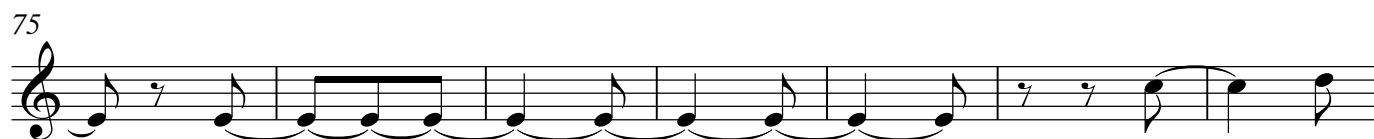
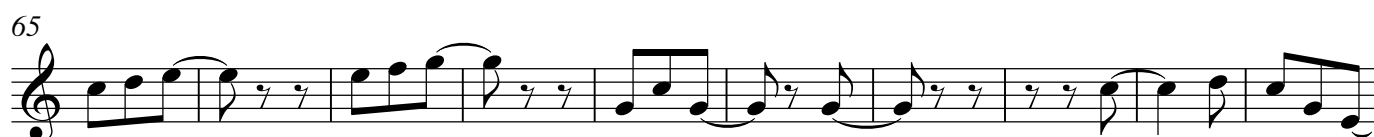


p

f



3



2