

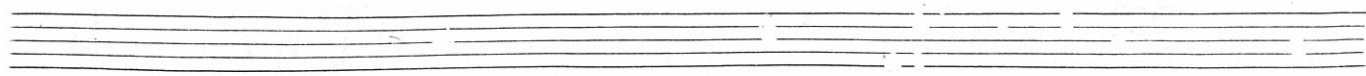
BIRD

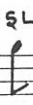
pour Saxophone Alto


et Bande

Salvador Torre

printemps 1987

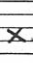



 = slap



 = court

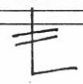
 = pizz


 = moyen



 = bruit de clé

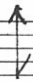
 = long



 ou  = souffle

 = Flatterzunge

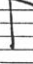
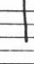
 = tremolo

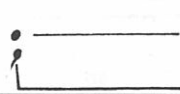
 ou  = voix

 = note la plus aigre

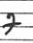
 ou  = très courte


 ou  = courte


 ou  = moyenne

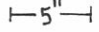
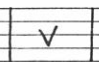
 = longue (dépend du trait)

 = respiration

 = respiration très courte

 = " assez longue

 = pause

  = pause de 5''

BIRD

pour Sax

Salvador Torre

1

bande

sax

alto

solo $\text{♩} = 96$

$\frac{9}{16}$

p

(le + aigue poss)

3 7

1.5"

5"

SL

p

ff

... en chuchotant devant le bec

(Consonnes)

↓	sl	frr
pizz	x x x x x	t r r s
t k t	z i r r	g r s s t
z i z z r r	sl	

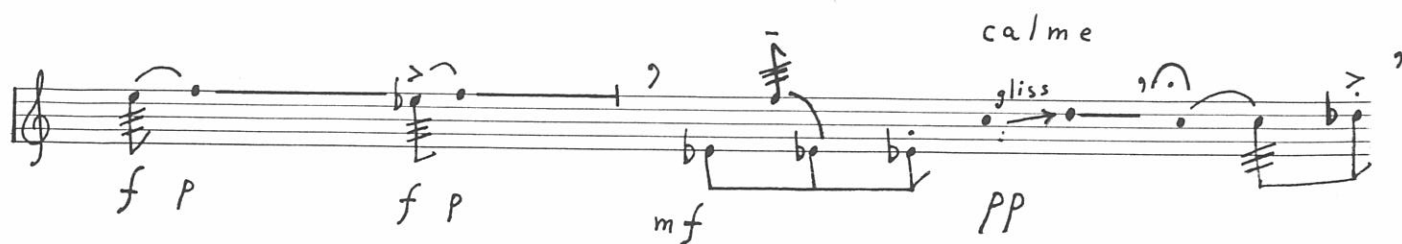
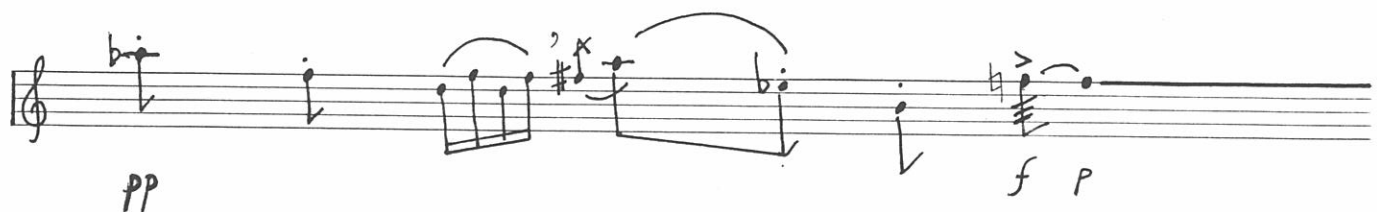
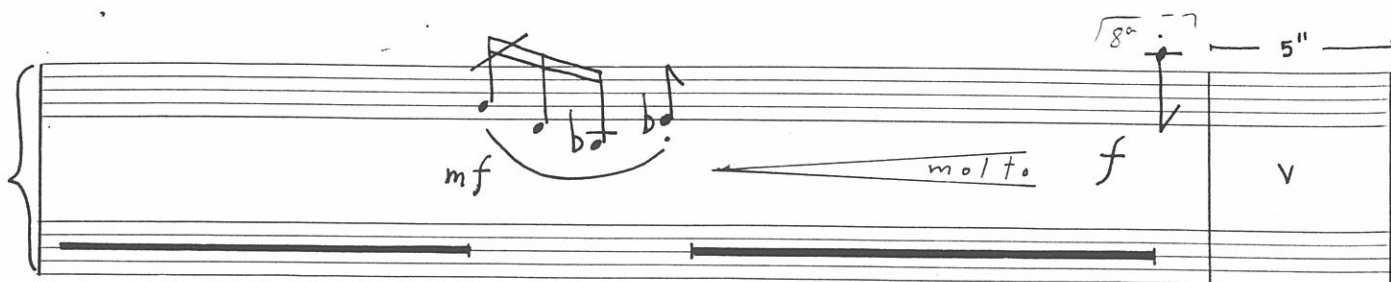
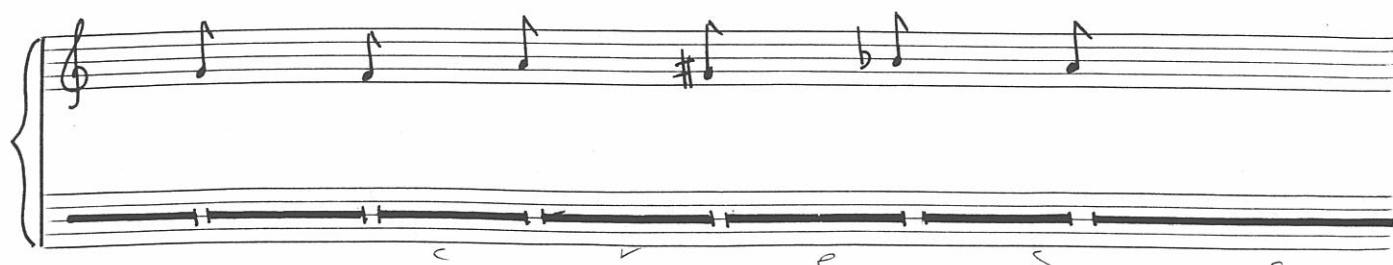
irreguliere

ppp

pp sempre

2.5"

v



agit 

Handwritten musical notation for a saxophone part. It features a treble clef with a key signature of one sharp (F#). The melody consists of eighth and quarter notes, some with triplets. Dynamics include *f*, *p*, *mf*, and *f*. There are also slurs and accents.

tr ~~~~~
 (F#) (F#)

voix

Handwritten musical notation for a voice part. It shows a treble clef with a wavy line representing a sustained note. Dynamics include *ff* and *mf*. There is a box containing notes and slurs.

tkk > piza

Handwritten musical notation for a voice part. It shows a treble clef with notes and slurs. Dynamics include *f* and *fff*.

(si possibile
 F#8)

Mod r  (voix de fasset   la hauteur du sax)

Handwritten musical notation for a voice part. It shows a treble clef with notes and slurs. Dynamics include *f* and *mp*. There is a 3'' mark.

mp

Handwritten musical notation for a voice part. It shows a treble clef with notes and slurs. Dynamics include *mp* and *f*. There is a "Voix" label.

f PPP f

Handwritten musical notation for a voice part. It shows a treble clef with notes and slurs. Dynamics include *f*, *PPP*, and *f*.

Vif

f

Presto

f sub

PP sub

Flatt

prestissimo
du nos 3x

f

g l i s s

2"

pp

répéter à volonté

ne jouez pas cette note la dernière fois

ff

fff

f

sfz

p

sfz

fff

(ou Ftz.)

b^b trum

(b.)

b^b

#

ande

ax

pesante

3"

ff

fondue

mf sub

PP < >

b^b (b.)

1 sec

MM=60

000

mp

f

mf

PP

Sande

Sax

Handwritten musical score for Saxophone and Sande. The score is written on ten staves, with the top staff labeled "Sande" and the subsequent staves labeled "Sax". The notation includes various musical symbols such as notes, rests, trills (tr), glissandos (gliss), and dynamic markings (mf, pp, ppp, f, p, mp, sffz, ff, pp, mf, p). The score is heavily annotated with handwritten notes and markings, including a large "3" and a "Flat" marking. The notation is dense and expressive, with many notes and markings written in ink.

Dynamic markings and performance instructions include:

- mf* (mezzo-forte)
- pp* (pianissimo)
- ppp* (pianississimo)
- f* (forte)
- p* (piano)
- mp* (mezzo-piano)
- sffz* (sforzando fortissimo)
- ff* (fortissimo)
- pp* (pianissimo)
- f* (forte)
- pp* (pianissimo)
- mf* (mezzo-forte)
- p* (piano)

Other markings include:

- tr* (trill)
- gliss* (glissando)
- Flat* (flat)
- 3* (triple)
- 3"* (three seconds)
- V* (crescendo)
- >* (accent)

double détaché

Flatt ord

g / i s s

ff p mf mp ff sfz p

tr

P f P f pp mf

bisbigliando

fff ffpp... sempre pp

18

cent

f

P sub

SL

f

pizz

mf

SL

f

mf

18

cent

PP

hop

ord

fp

bisbigliando

mf

p

(18)

Handwritten musical score for a single staff, measures 1-17. The score includes various musical notations such as notes, rests, and dynamic markings. Key annotations include 'f' (forte), 'mf' (mezzo-forte), 'p' (piano), 'sffz' (sforzando), and 'tr (tout les dt)' (trill). There are also handwritten notes like 'gliss (possible)' and 'Arraché'. A box labeled '2'17'' is present near measure 17.

20

Handwritten musical score for a single staff, measures 18-20. The score includes various musical notations such as notes, rests, and dynamic markings. Key annotations include 'Lent', 'non vib', 'pp + s', 'mp', 'f', 'pp', and 'vib'. There are also handwritten notes like '46' and 'C2'.

65

Handwritten musical score for a single staff, measures 21-23. The score includes various musical notations such as notes, rests, and dynamic markings. Key annotations include 'd'une grande respiration', 'ppp + s', 'mp', 'c2', and 'c3'.

(toutes les doigts) irregulier (bec hors de la bouche) avec accents

perc

pp

soufflé

c r e s

e n (1/3 B) (5/7)

c r e s c. molto

ff ffP mp ff sub

Bande

Lent Normale

1/3 B 5/7

p sempre

000

improvisez avec ces motifs

Bande

(?)

Sax

SL SL

S < SS > S < S >

mf < p sub

S P S PP S

mf < SS >

mp P mp < f >

gliss

sfz

$\text{♩} = 96$

Bande

Handwritten musical notation for the first system. It consists of two staves. The top staff is in treble clef with a key signature of one flat (B-flat) and a 3/4 time signature. It begins with a forte (*fz*) dynamic and a *senza espressione* marking. The bottom staff is also in treble clef with a 3/4 time signature and begins with a mezzo-forte (*mf*) dynamic. Both staves contain melodic lines with various accidentals and slurs.

Handwritten musical notation for the second system, continuing the two-staff format. It includes melodic lines with slurs and a *sub* marking at the end of the bottom staff.

Handwritten musical notation for the third system. The top staff features a piano (*pp*) dynamic and includes the vocalizations "ha ha" and "ha heh heh". The bottom staff has a *respiration continue* marking with a circular arrow symbol.

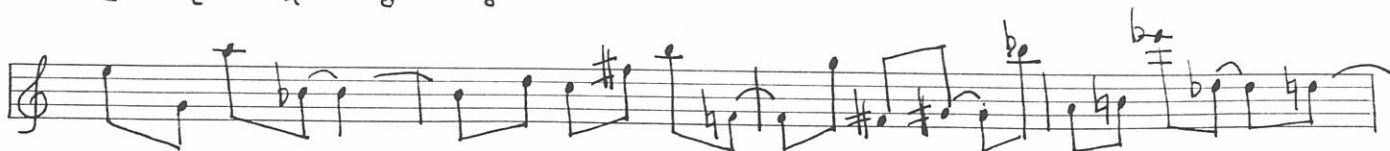
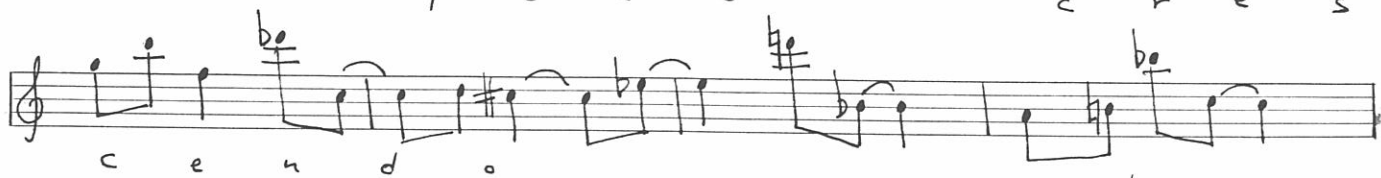
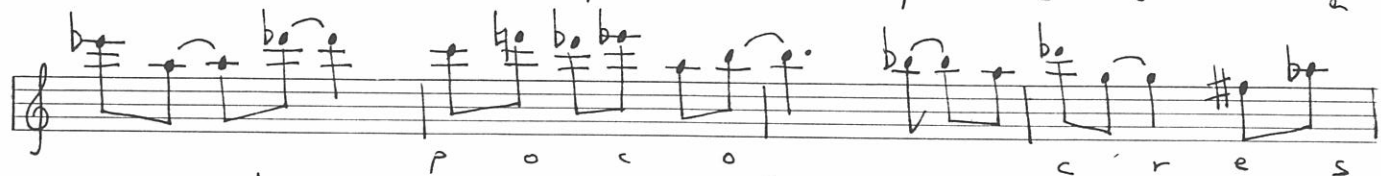
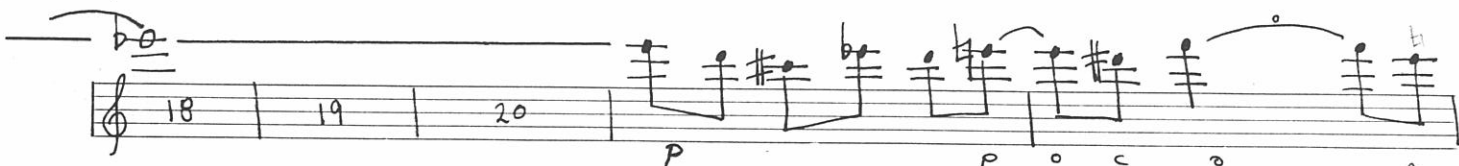
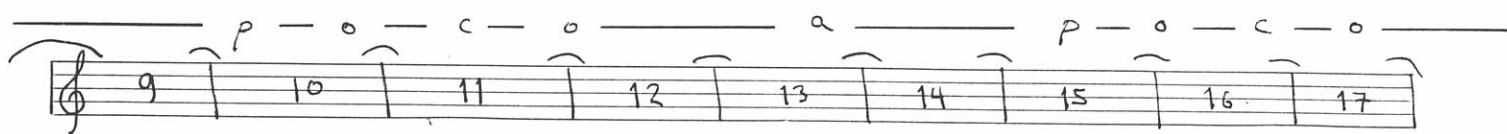
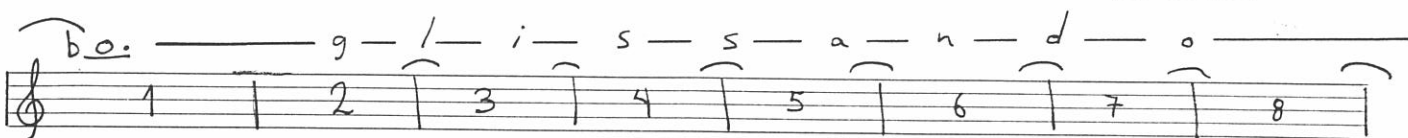
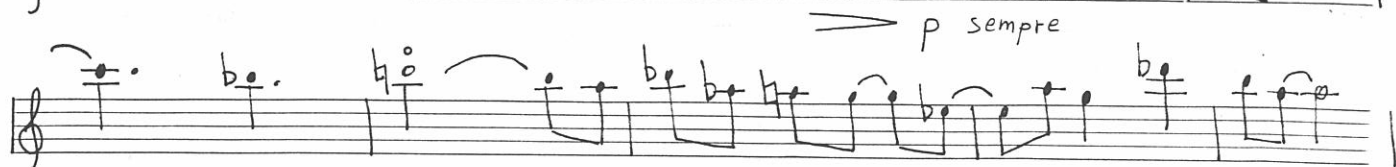
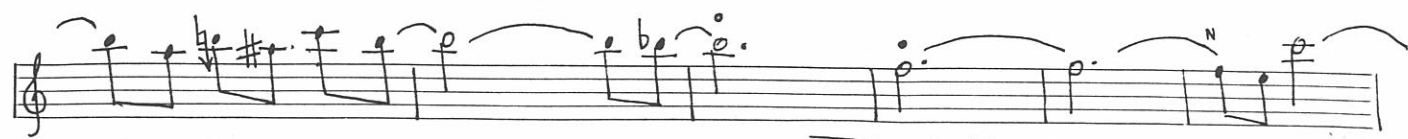
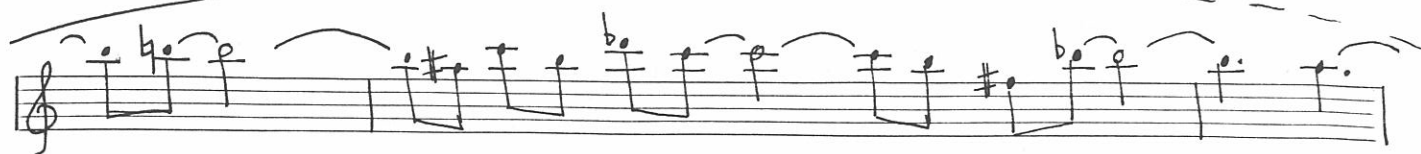
Handwritten musical notation for the fourth system. The top staff includes a pianissimo (*ppp*) dynamic and a *f* dynamic marking. The bottom staff has a *respiration continue* marking.

⑥ ($\text{♩} = 96$)

Handwritten musical notation for the fifth system. It begins with a $\text{♩} = 96$ tempo marking and includes the instructions "sempre legato", "lisse et plat", and "piano sempre". The notation is on a single staff in treble clef with a 3/4 time signature.

Handwritten musical notation for the sixth system, continuing the single-staff format with melodic lines and slurs.

* En principe toutes ces deux pages et demie doivent être jouées en respiration continue, mais dans l'impossibilité de le faire on peut effectuer des incursions très brèves : ...



13 (legato sempre)

ax

c r e s c e n d o

f sub

ff

10"

f

6"

vib

f

6"

vib

f