

Piano



Invention in C minor

Daniel Leo Simpson
San Carlos, CA
November 10, 2002

Tempo di Tarantella ♩ = 160

Measures 1-5 of the piano score. The right hand starts with a forte (f) dynamic, playing eighth-note patterns. The left hand enters in measure 3 with a similar eighth-note pattern.

Measures 6-10. Measure 6 is marked with a box containing the number 6. The right hand continues with eighth-note patterns, and the left hand provides a steady accompaniment. A mezzo-forte (mf) dynamic is indicated in measure 8.

Measures 11-15. Measure 11 is marked with a box containing the number 11. The musical texture continues with eighth-note patterns in the right hand and a consistent accompaniment in the left hand.

Measures 16-20. Measure 16 is marked with a box containing the number 16. The right hand features a more active melodic line with eighth-note patterns, while the left hand remains accompanimental.

Measures 21-25. Measure 21 is marked with a box containing the number 21. The piece concludes with sustained notes in the right hand and a final accompanimental phrase in the left hand.

27



32



37



42



47



52

57

62

67

73

79



84



89



94



99



104

109

114

119

124

129

134

139

144

149

154



159



164



169



174



179

Measures 179-183. The music is in 2/4 time with a key signature of two flats. The melody in the treble clef consists of eighth and quarter notes. The bass line features a steady eighth-note accompaniment. A *cresc.* marking with a dashed line appears above the treble staff in measure 183.

184

Measures 184-188. The melody continues with eighth-note patterns. A *f* (forte) dynamic marking is placed above the treble staff in measure 186.

189

Measures 189-193. The musical texture continues with eighth-note accompaniment in the bass and a more active melody in the treble.

194

Measures 194-198. The melody features a descending line in measure 195. A *mp* (mezzo-piano) dynamic marking is placed above the treble staff in measure 195.

199

Measures 199-203. The melody includes a chromatic descent in measure 200. A *cresc.* marking with a dashed line spans measures 200 and 201. A *f* dynamic marking appears above the treble staff in measure 203.

204

209

214

219

224

229



234



239



244



249



254

A musical score for the song 'The Rose Tree'. The score is written for a piano and voice. The piano part is in the lower register, using a bass clef and a key signature of one flat (B-flat). The melody is in the upper register, using a treble clef and the same key signature. The tempo is marked 'Moderato'. The score consists of five measures. The first measure shows the piano part with a treble clef and a bass clef, and the melody with a treble clef. The second measure shows the piano part with a treble clef and a bass clef, and the melody with a treble clef. The third measure shows the piano part with a treble clef and a bass clef, and the melody with a treble clef. The fourth measure shows the piano part with a treble clef and a bass clef, and the melody with a treble clef. The fifth measure shows the piano part with a treble clef and a bass clef, and the melody with a treble clef.

259

A musical score for the song 'The Rose Tree'. The score is written for a piano and voice. The piano part is in the lower register, using a bass clef and a key signature of one flat (B-flat). The voice part is in the upper register, using a treble clef and the same key signature. The tempo is marked 'Allegretto' and the time signature is 3/4. The score consists of five measures. The piano part features a steady eighth-note accompaniment. The voice part enters in the second measure with the melody. The lyrics 'The Rose Tree' are written below the voice line.

264

A musical score for the song 'The Rose Tree'. The score is written for a single melodic line on a treble clef staff and a single bass line on a bass clef staff. The key signature is one flat (B-flat), and the time signature is 4/4. The melody is composed of eighth and sixteenth notes, with some rests. The bass line consists of a simple harmonic accompaniment using quarter and eighth notes. The score is presented in a standard musical notation format with a treble and bass staff.

269

musical score for "The Rose Tree" in G major, 3/4 time. The score consists of two staves. The upper staff is for the treble clef and the lower staff is for the bass clef. The key signature has one sharp (F#) and the time signature is 3/4. The melody in the treble staff begins with a quarter note G4, followed by an eighth note A4, a quarter note B4, and an eighth note A4. The bass staff begins with a quarter note G2, followed by an eighth note A2, a quarter note B2, and an eighth note A2. The score includes a crescendo marking (cresc.) and a forte marking (f).

274

A musical score for the song 'The Rose Tree'. It features a treble and bass staff in 4/4 time, with a key signature of one flat (B-flat). The melody is written in the treble staff, and the bass line is in the bass staff. The score consists of five measures. The first measure has a treble staff with a quarter note G4, a quarter note A4, and a quarter note B4, followed by a quarter rest. The bass staff has a quarter note G2, a quarter note A2, and a quarter note B2, followed by a quarter note C3. The second measure has a treble staff with a quarter note G4, a quarter note A4, and a quarter note B4, followed by a quarter note C5. The bass staff has a quarter note G2, a quarter note A2, and a quarter note B2, followed by a quarter note C3. The third measure has a treble staff with a quarter note G4, a quarter note A4, and a quarter note B4, followed by a quarter note C5. The bass staff has a quarter note G2, a quarter note A2, and a quarter note B2, followed by a quarter note C3. The fourth measure has a treble staff with a quarter note G4, a quarter note A4, and a quarter note B4, followed by a quarter note C5. The bass staff has a quarter note G2, a quarter note A2, and a quarter note B2, followed by a quarter note C3. The fifth measure has a treble staff with a quarter note G4, a quarter note A4, and a quarter note B4, followed by a quarter note C5. The bass staff has a quarter note G2, a quarter note A2, and a quarter note B2, followed by a quarter note C3.

279



285



290

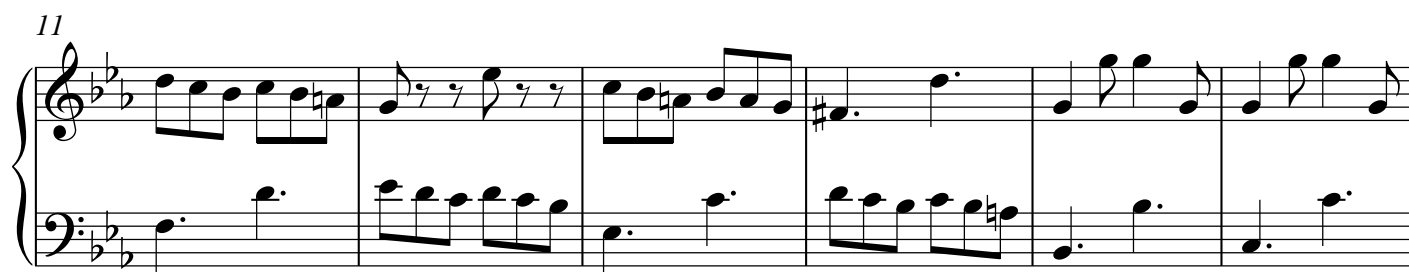
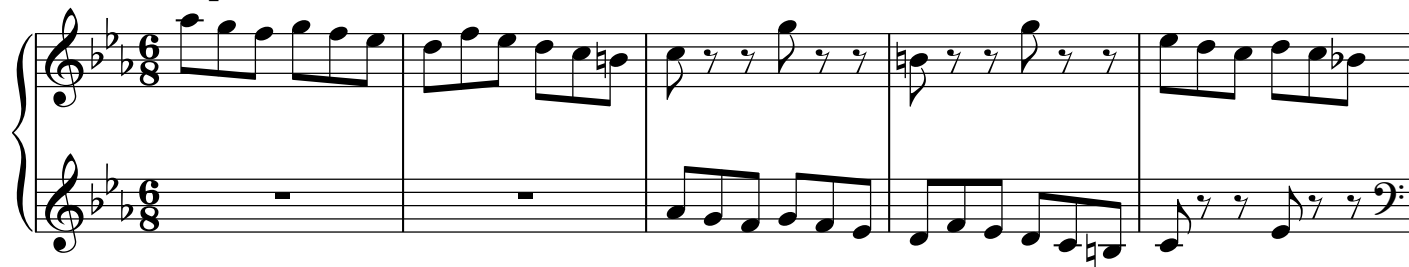




Invention No.12 in C minor

Daniel Leo Simpson
San Carlos, CA
November 10, 2002

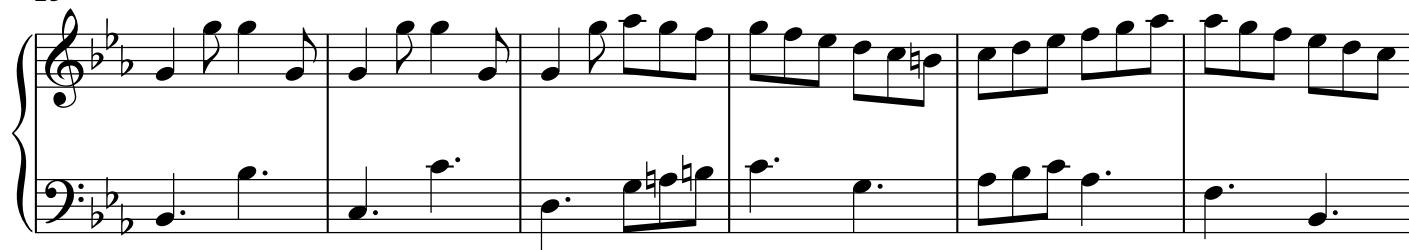
Tempo di Tarantella ♩. = 160



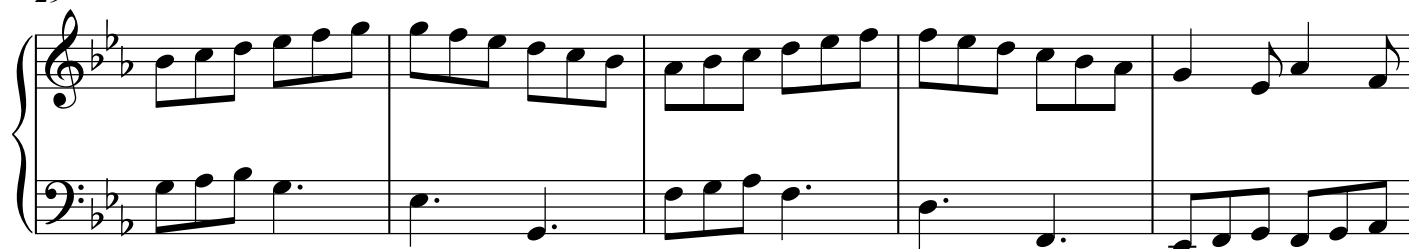
Copyright 1984 by Daniel Leo Simpson
daniel@danielsimpson.com
cum sancto spiritu

Invention No.12 in C minor 12/8/2009

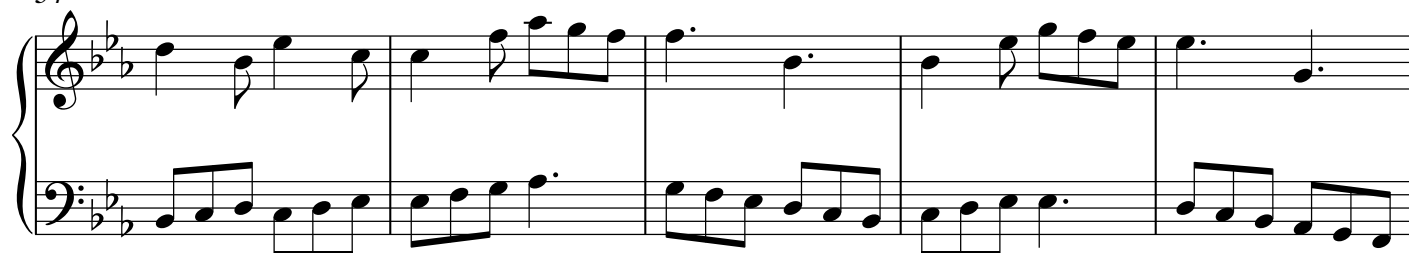
23



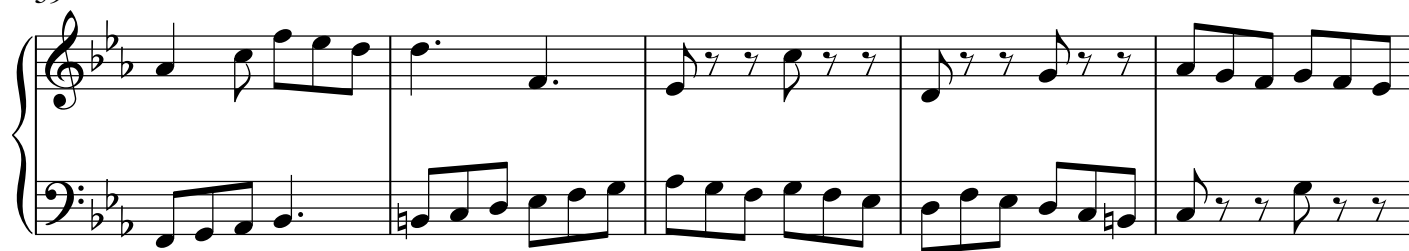
29



34



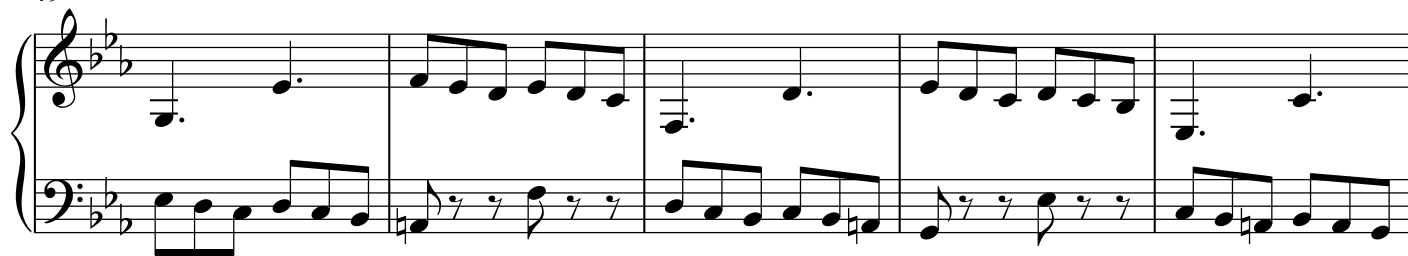
39



44



49



54



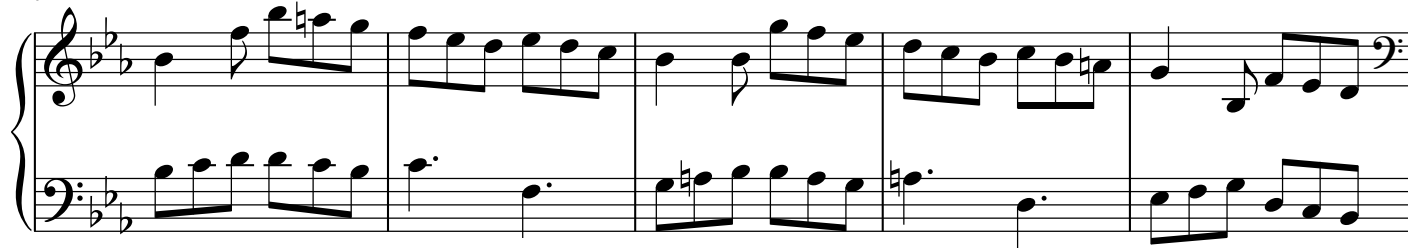
59



65



71



76

Measures 76-81 of the musical score. The system consists of two staves. The upper staff is in treble clef and the lower staff is in bass clef. The key signature is C minor (three flats). Measure 76 features a complex rhythmic pattern in the upper staff with eighth and sixteenth notes, and a simpler bass line. A repeat sign appears at the end of measure 76. Measures 77-81 continue the piece with various melodic and harmonic developments in both staves.

82

Measures 82-86 of the musical score. The system consists of two staves. The upper staff is in treble clef and the lower staff is in bass clef. The key signature is C minor. Measure 82 begins with a new melodic line in the upper staff. The piece continues with intricate fingerings and rhythmic patterns in both staves through measure 86.

87

Measures 87-91 of the musical score. The system consists of two staves. The upper staff is in treble clef and the lower staff is in bass clef. The key signature is C minor. Measure 87 shows a continuation of the melodic development in the upper staff. The bass line provides harmonic support with various chords and moving lines. The system concludes with measure 91.

92

Measures 92-97 of the musical score. The system consists of two staves. The upper staff is in treble clef and the lower staff is in bass clef. The key signature is C minor. Measure 92 features a prominent melodic line in the upper staff. The piece continues with complex rhythmic patterns and harmonic textures in both staves through measure 97.

98

Measures 98-103 of the musical score. The system consists of two staves. The upper staff is in treble clef and the lower staff is in bass clef. The key signature is C minor. Measure 98 begins with a new melodic line in the upper staff. The piece concludes with measure 103, featuring a final cadence in both staves.

104

Measures 104-109. The music is in C minor (three flats). The right hand features a melodic line with eighth and sixteenth notes, while the left hand provides a harmonic accompaniment with dotted rhythms and eighth notes.

110

Measures 110-114. The right hand continues the melodic development with more complex sixteenth-note passages. The left hand maintains a steady accompaniment pattern.

115

Measures 115-119. This section shows further melodic elaboration in the right hand, with the left hand providing a consistent harmonic support.

120

Measures 120-124. The right hand features a series of descending and ascending eighth-note runs. The left hand continues with its accompaniment.

125

Measures 125-129. The final system on the page, showing the continuation of the melodic and harmonic themes in the right and left hands respectively.

130

Measures 130-134 of the musical score. The treble clef staff features a melodic line with eighth and sixteenth notes, while the bass clef staff provides a harmonic accompaniment with eighth and sixteenth notes. The key signature is C minor (three flats).

135

Measures 135-139 of the musical score. The treble clef staff continues the melodic development with various rests and note values. The bass clef staff maintains the accompaniment pattern. The key signature remains C minor.

140

Measures 140-144 of the musical score. The treble clef staff shows a continuation of the melodic motif. The bass clef staff features a more active accompaniment with eighth notes. The key signature is C minor.

145

Measures 145-149 of the musical score. The treble clef staff includes a melodic phrase with a sharp sign (likely indicating a natural or a specific interval). The bass clef staff continues the accompaniment. The key signature is C minor.

150

Measures 150-154 of the musical score. The treble clef staff features a melodic line with eighth and sixteenth notes. The bass clef staff provides a harmonic accompaniment with eighth and sixteenth notes. The key signature is C minor.

155



160



165



170



176



182

Measures 182-186 of the musical score. The key signature is C minor (three flats). The melody in the right hand features eighth and sixteenth notes, while the left hand provides a steady accompaniment of eighth notes. Measure 185 includes a treble clef change in the left hand.

187

Measures 187-191 of the musical score. The right hand continues with eighth and sixteenth notes, and the left hand maintains the eighth-note accompaniment. Measure 190 features a treble clef change in the left hand.

192

Measures 192-196 of the musical score. The right hand continues with eighth and sixteenth notes, and the left hand maintains the eighth-note accompaniment. Measure 195 features a treble clef change in the left hand.

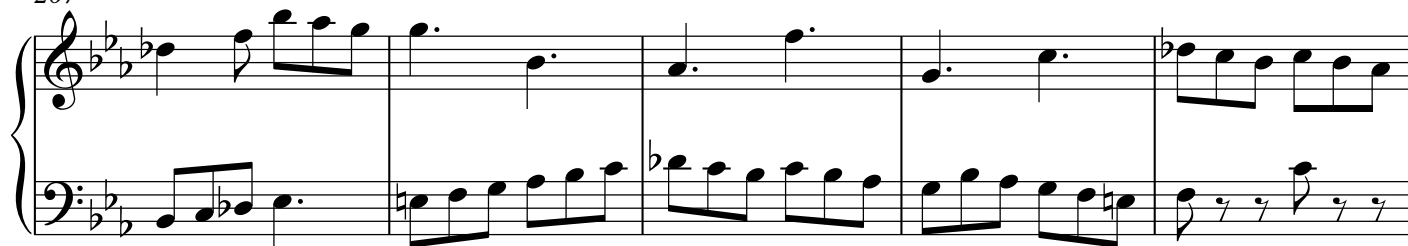
197

Measures 197-201 of the musical score. The right hand continues with eighth and sixteenth notes, and the left hand maintains the eighth-note accompaniment. Measure 200 features a treble clef change in the left hand.

202

Measures 202-206 of the musical score. The right hand continues with eighth and sixteenth notes, and the left hand maintains the eighth-note accompaniment. Measure 205 features a treble clef change in the left hand.

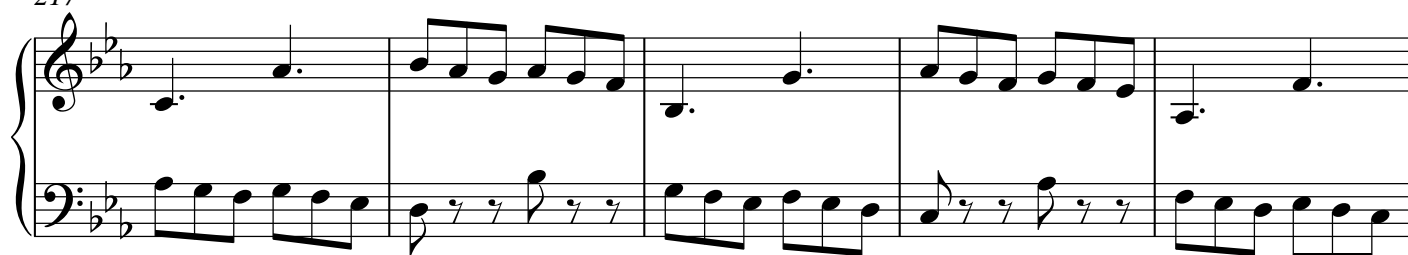
207



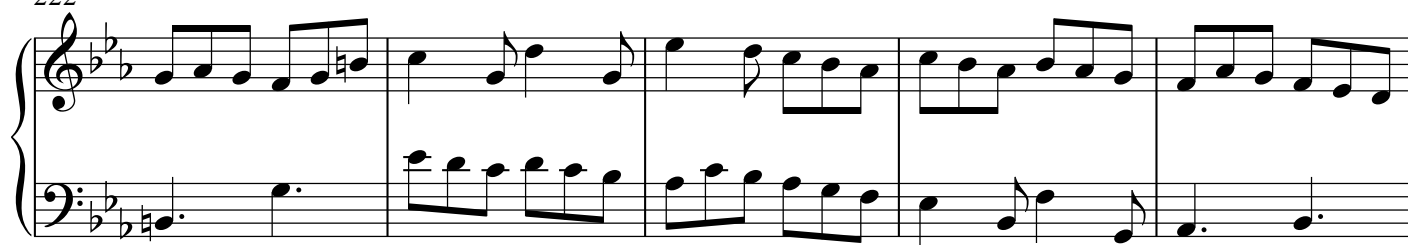
212



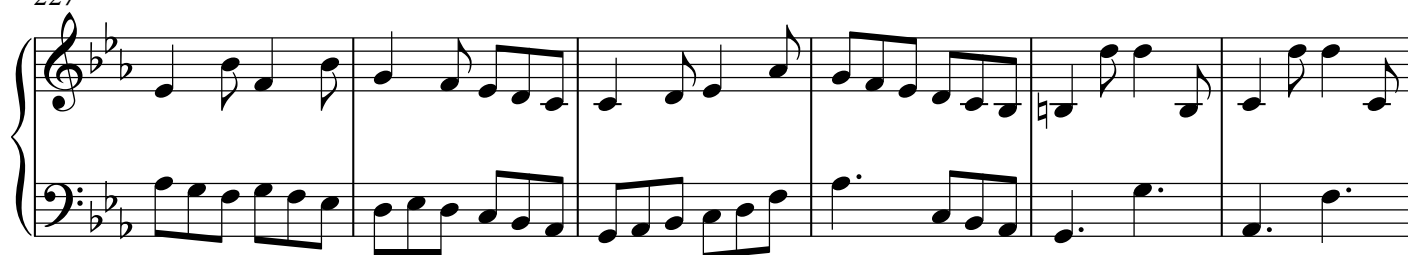
217



222



227



233

Measures 233-238. The right hand features a continuous eighth-note pattern, while the left hand provides a steady accompaniment of dotted half notes.

239

Measures 239-244. The right hand continues with eighth-note patterns, and the left hand maintains the dotted half note accompaniment.

245

Measures 245-249. The right hand continues with eighth-note patterns, and the left hand maintains the dotted half note accompaniment.

250

Measures 250-254. The right hand continues with eighth-note patterns, and the left hand maintains the dotted half note accompaniment.

255

Measures 255-259. The right hand continues with eighth-note patterns, and the left hand maintains the dotted half note accompaniment.

260

Measures 260-264 of the musical score. The treble clef staff contains a series of eighth and sixteenth notes, while the bass clef staff features a more rhythmic accompaniment with dotted notes and eighth notes. The key signature is C minor (three flats).

265

Measures 265-269 of the musical score. The treble clef staff continues the melodic line with eighth and sixteenth notes. The bass clef staff provides a steady accompaniment with dotted notes and eighth notes.

270

Measures 270-274 of the musical score. The treble clef staff shows a continuation of the melodic pattern. The bass clef staff maintains the accompaniment with dotted notes and eighth notes.

275

Measures 275-280 of the musical score. The treble clef staff features a melodic line with some rests. The bass clef staff continues the accompaniment with dotted notes and eighth notes.

281

Measures 281-285 of the musical score. The treble clef staff shows a melodic line with some rests. The bass clef staff continues the accompaniment with dotted notes and eighth notes.

287

This system contains measures 287 through 290. The treble clef staff features a melodic line with eighth and sixteenth notes, including some accidentals. The bass clef staff provides a harmonic accompaniment with eighth and sixteenth notes, and some dotted rhythms. The key signature is C minor (three flats).

291

This system contains measures 291 through 294. Measures 291 and 292 continue the melodic and harmonic patterns. Measures 293 and 294 feature a final cadence with sustained notes in both staves, marked by a double bar line. The key signature remains C minor.