



37

39

45

49

51

53

55

57

63

66

68

The image displays a musical score for Violine 2, spanning measures 37 to 68. The notation is written on a single staff in treble clef. The key signature is one sharp (F#), and the time signature is 4/4. The score consists of ten staves of music. Measures 37-38 show a continuous eighth-note pattern. Measures 39-44 feature a series of eighth-note chords with rests. Measures 45-48 continue this pattern with some chromatic movement. Measures 49-50 show a more complex rhythmic pattern with sixteenth notes. Measures 51-52 return to a continuous eighth-note pattern. Measures 53-54 continue this pattern. Measures 55-56 show a change in rhythm with quarter notes and eighth notes. Measures 57-62 feature a series of eighth-note chords with rests. Measures 63-65 continue this pattern. Measures 66-67 show a continuous eighth-note pattern. Measure 68 ends with a half note and a fermata.

## 2. Largo

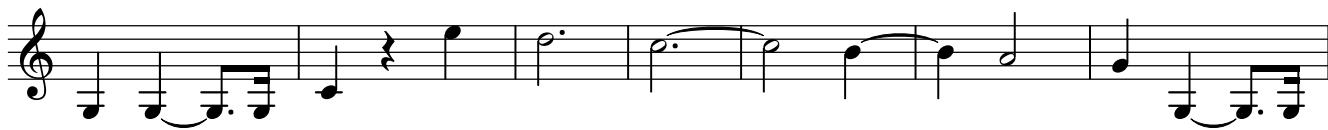
### Violine 2

3

71



77



84



89



97



102



## 3. Allegro

112



116



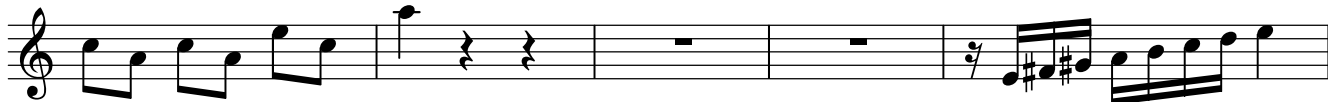
119



122



125



130

133

141

144

146

157

162

165

168

174

177