

1st Oboe

Florence's Farewell

Daniel Léo Simpson
February 2002
San Carlos, CA

Boldy ♩=90

2

f

tr

rit. **a tempo** ♩=90

6 **A** **2**

tr

12

mf < *f*

17 **B**

mp < *mf*

a2 *f*

22 **2**

27 *rall.*

cresc.

29 **C** **A tempo** **2**

f

2

37 **D** 6 *mf* *mf* *tr*

46 **E** 2 2 *mp*

52 *mf* *mf*

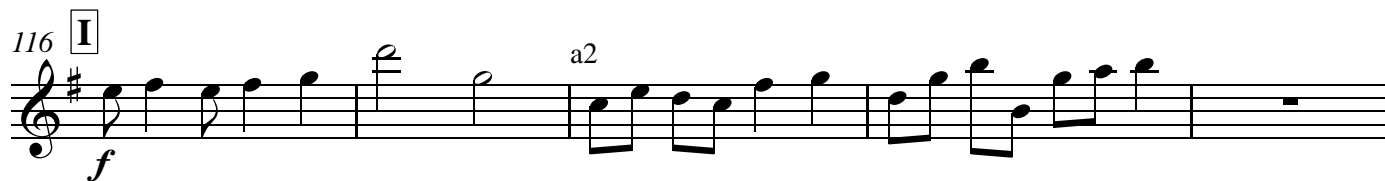
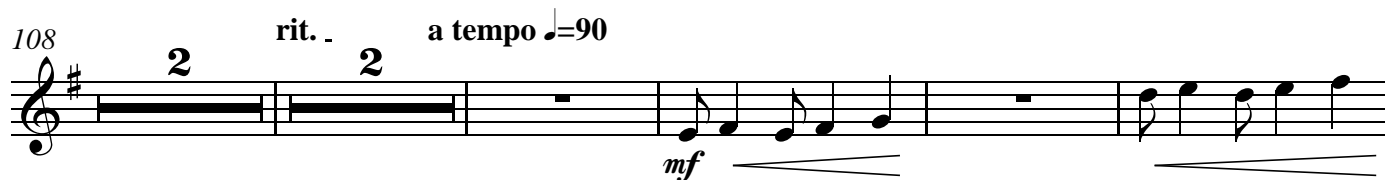
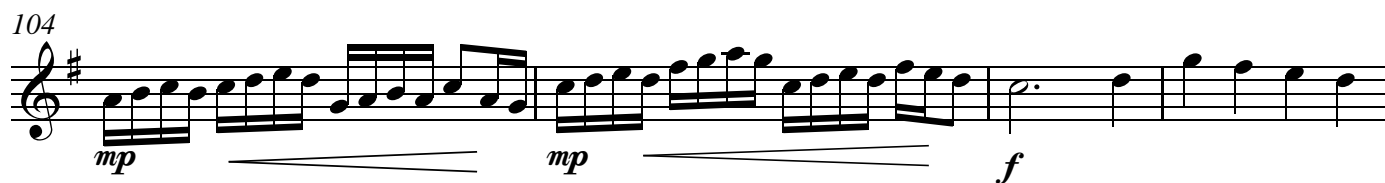
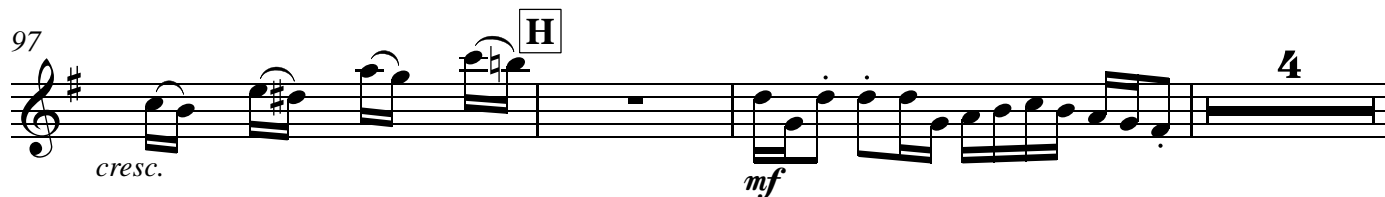
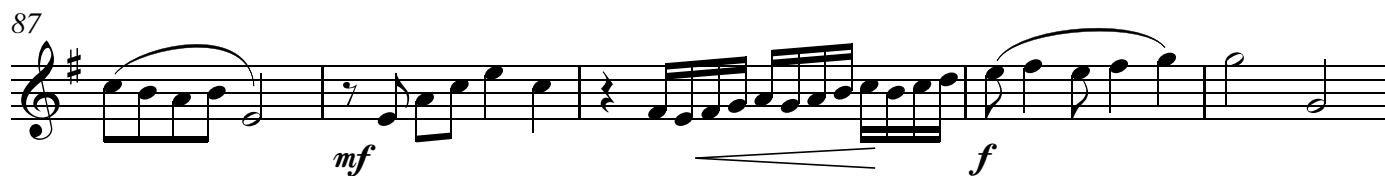
57 *rit.* *rall.* *a tempo* ♩=90 *cresc.*

60 **F** *f*

64 *mp*

68 *p* *molto rall.* 2

74 **G** *poco meno mosso* ♩=84 *poco rall.* 4 *mp*

82 solo **Tempo I** (♩ = 90)

131 **J**

p *mp*

138

mf *f*

146 **rall.** **K** Broadly ♩ = 84

ff

149

153

f

156

f

158

f

161 **rall.** - - - - -

ff

2nd Oboe

Florence's Farewell

Daniel Léo Simpson
February 2002
San Carlos, CA

Boldy $\text{♩} = 90$

2

f

tr

6

rit. *tr*

A

a tempo $\text{♩} = 90$

2

13

B

4

mp *mf* *f*

22

4

mf *cresc.*

rall. *tr*

C

29

A tempo

2

f

35

2

mf

D

10

49

E

7

56

mf

59

rit. rall.

cresc.

61

F a tempo ♩=90

f *mf* *f*

66

mp *mp*

74

G poco meno mosso ♩=84

poco rall.

82

Tempo I (♩ = 90)

mf *f*

92

p

97 H

cresc. *mf* 4

104

mp *mp* *f*

107 rit. 2 2 a tempo ♩=90 3

mf

116 I

f

121 rit. ♩ = 90 Molto andante 5 2 molto rall. 2

rit. ♩ = 90 *Molto andante* *molto rall.*

131 J 6

6

137

f

146 **rall.** **K** Broadly ♩ = 84

ff

149

3

153

f

156

f

158

161 **rall.** - - - - -

ff