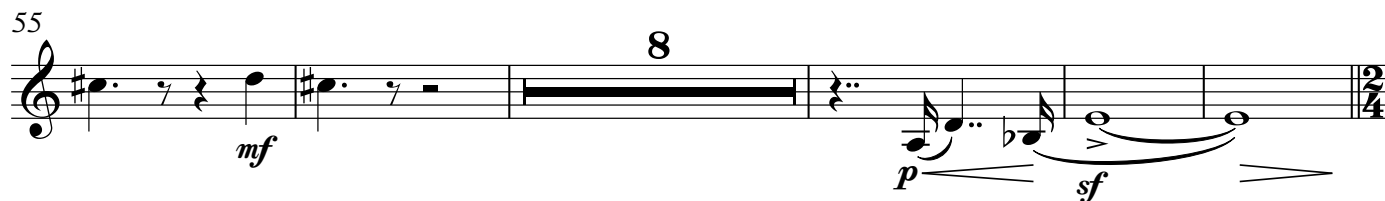
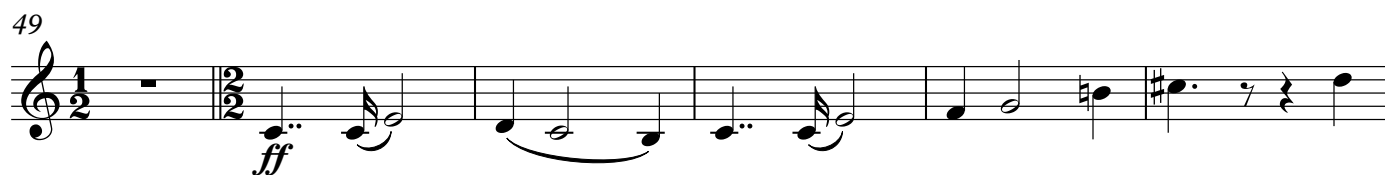
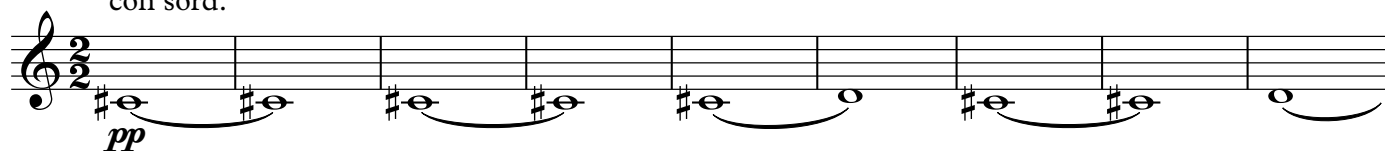


Violin II

Contes d'Espagne, Op. 20

1. Devant la tour du Clavero (Salamanca)

Turina/Johnson

Moderato [$\text{♩}=76$]
con sord.

82 *p*

87 *pp*

92 **rall.**

8

2. Une vieille eglise a Logrono

100 **Andante**

6

4

p

113

117 *f* *dim. molto* *p* *div.* *pp*

124 *dim.*

131 *dim. molto* *pp* **10** **con sord.**

148

154 **rit.** **a tempo**
senza sord. **4**

163 **mf** **f** **cresc.**

167 **ff** **cresc.** **fff**

171 div. con sord. **mf** **pp**

3. Miramar (Valencia)

178 **Allegro vivo**

186 **f**

194 **mf** **mp** **f**

204

212 **dim.** **p**

218 **f** **2**

cedez un peu rubato

226 **2** *mp* *div.*

238 *sf*

250 **Allegretto** **7** cedez un peu (tempo) **5** *p*

268 **Tempo primo** **2** *cresc.* *mf* *cresc.* *ff*

278

289 *sfz* **2**

300 *dim.* *p*

311 *p*

319 *dim.* *pp*

328 *pizz.* *arco* *con sord.* *pp* *ff*

4. Dans les jardins de Murcia

336 div. **Allegretto mosso** [$\text{♩} = 48$]

348

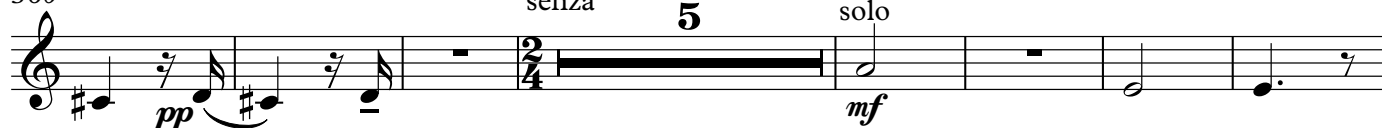


360 [molto rit.]

Piu mosso
senza

5

solo



372

tutti

solo



382 rit.

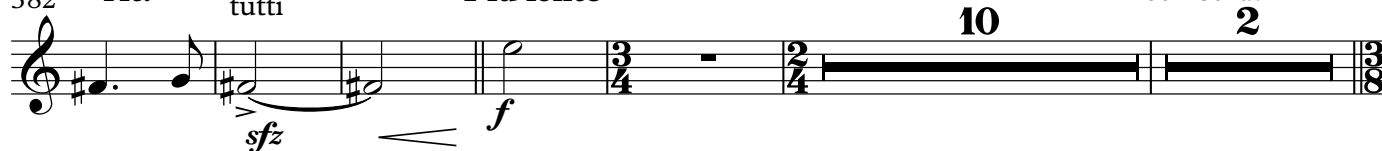
tutti

Piu lento

10

con sord.

2

399 **Tempo primo**

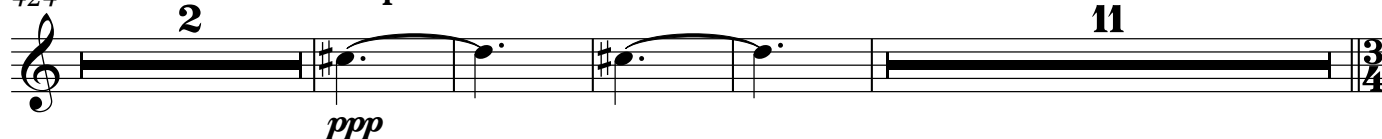
412



424 rit.

a tempo

11



5. Le Chemin de la Alhambra

441 **Andante**
2

pizz. **Allegro martial**

449

457 arco **f** **p**

465 **cresc.** **f** **f** 4

476 3 3 3 3 **sfz** **mf** **dim.** **p**

484 6 **f**

499 pizz. **mf**

510 arco

518 4 **f**

528 *dim.* *mp* *p* *pp*

537 *dim.* *ppp* *p* G.P.

547

555

564 *p*

572 *p* 5

584 *ppp*

6. La Caleta (Malaga)

594 **Allegretto mosso** 2 2

603 2 con sord. 3 *p* *cresc.* *f*

612 **Piu lento** 7

621

pp

6

631

rall. **Tempo primo**

senza sord. con sord. senza sord.

p cresc. *f* *pp*

641

Piu Lento

5

ff 6 6

648

rall. **Molto Adagio**

2

dim. molto

653

Tempo primo

p cresc. *mf cresc.* *f cresc.*

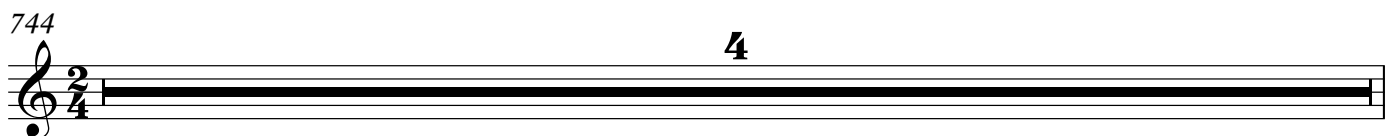
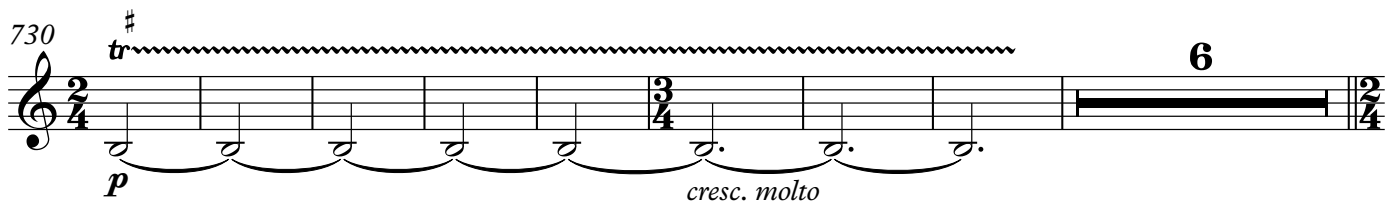
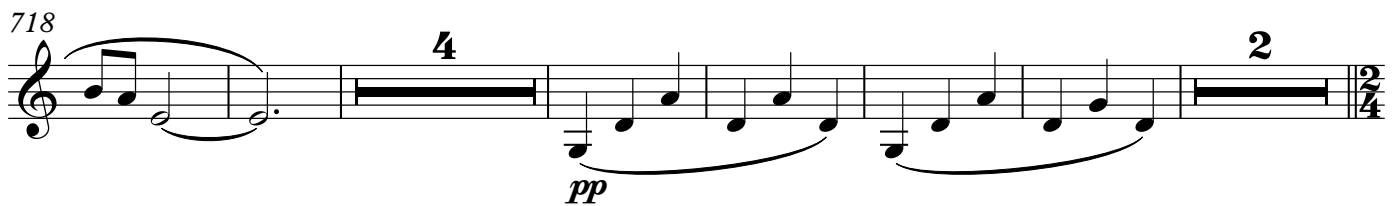
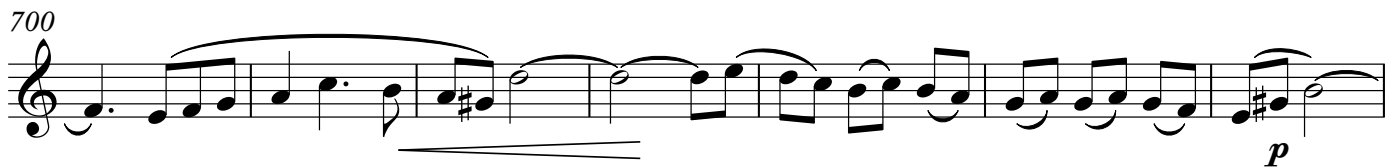
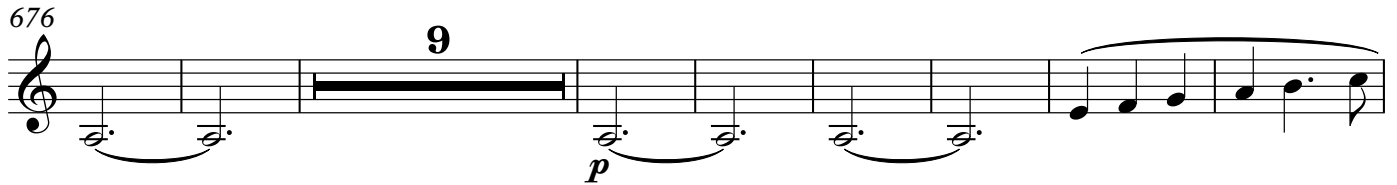
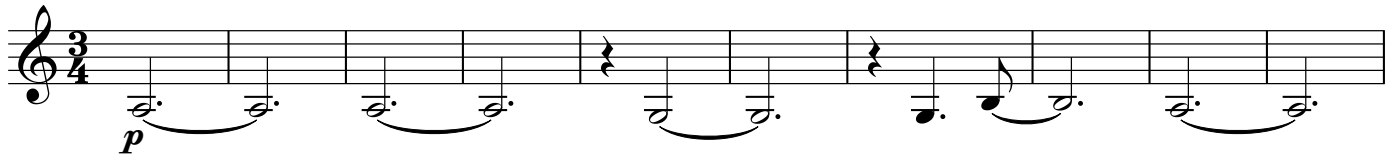
659

ff

661

fff

7. Rompeolas (Jeux des vagues)

666 **Allegro vivo**

748 *tr* **Giusto**

p *cresc.* *f* *ff*

757 *dim.*

764 **rit.** *p* *div.*

769 **Meno mosso** **Tempo primo** *mf* *f* 8

785 *mp*

793 *cresc.* *f* *tr*

800 7 *mp*

814 **Allegretto** *mf*

822 *f*

830 **Tempo primo** *mp* 2

840

848 *p* *f* 4 8

858

873 *mf* *cresc.* *f* *cresc.*

878 [rall.]

881 **Andante** *ff* 6 6

888 5 6 6 *ff*

894 *ff* *dim.* *p*

903 **Tempo primo** 2 3 4 *cresc.* *f* *f*

909 8 7 *ff*

Detailed description of the musical score: The page contains nine staves of music for Violin II. Measures 840-847 are in 4/4 time, featuring a melodic line with slurs and a fermata. Measures 848-857 continue the melodic line with a dynamic shift from *p* to *f* and a 4-measure rest. Measures 858-872 are in 4/4 time, with a melodic line and a dynamic shift from *mf* to *f*. Measures 873-877 are in 4/4 time, with a melodic line and a dynamic shift from *mf* to *f*. Measures 878-880 are in 4/4 time, marked [rall.]. Measures 881-887 are in 2/4 time, marked **Andante**, with a melodic line and a dynamic shift from *ff* to *ff*. Measures 888-893 are in 2/4 time, with a melodic line and a dynamic shift from *ff* to *ff*. Measures 894-902 are in 2/4 time, with a melodic line and a dynamic shift from *ff* to *p*. Measures 903-908 are in 3/4 time, marked **Tempo primo**, with a melodic line and a dynamic shift from *cresc.* to *f*. Measures 909-910 are in 3/4 time, with a melodic line and a dynamic shift from *ff* to *ff*.