

Piano Sonata No. 4 in E-Flat Major, "Grand"

Violin I

1. Allegro molto e con brio

Ludwig van Beethoven

Joshua Choe

Allegro molto e con brio

p *sf*

8 *sf* *p*

14 *f* *p*

23 *ff* *pp* *ff*

30 *pp* *ff* *sf* *fp*

37 9

51 *p sf* *sf*

57 *p*

64 *sf* *p*

71 *cresc.*

77 *ff* *pp*

83

89 *f* *sf*

95 *sf* *sf* *pcresc.* *ff* 7

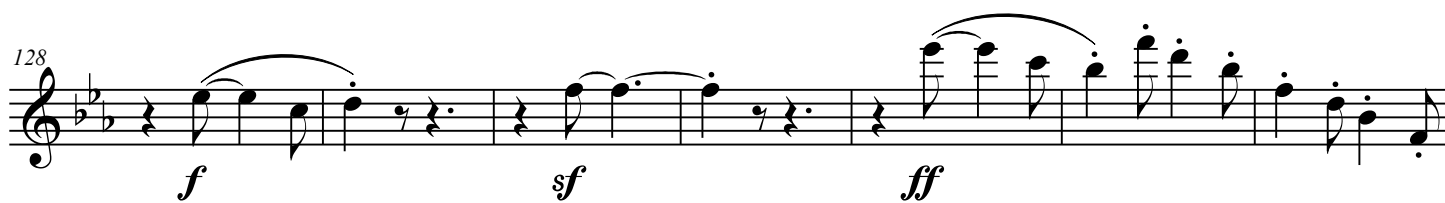
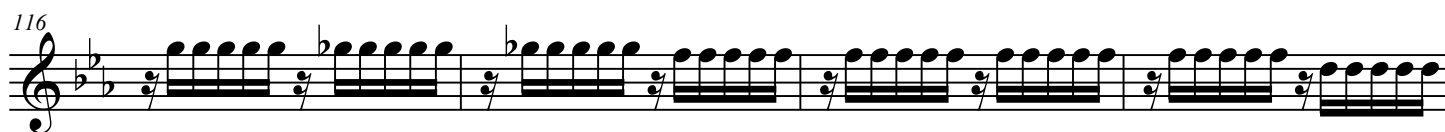
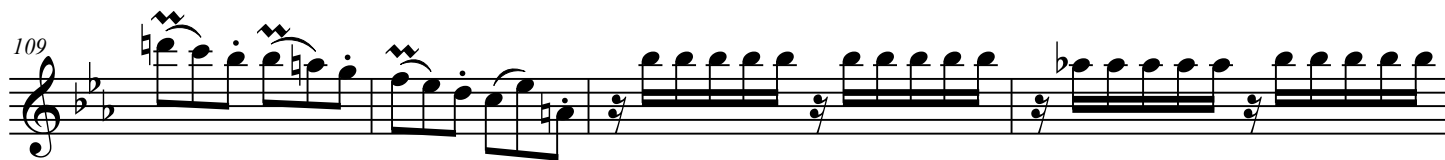
99

103 *p* *cresc.*

Detailed description: This page of a musical score contains measures 64 through 103 of a piano sonata. The music is written in E-flat major (three flats) and 4/4 time. It features a variety of textures and dynamics. Measures 64-76 show a melodic line with dotted rhythms and slurs, with dynamics ranging from piano (*p*) to fortissimo (*sf*). Measures 77-82 introduce a dense, rapid sixteenth-note accompaniment in the right hand, with dynamics of fortissimo (*ff*) and pianissimo (*pp*). Measures 83-94 continue the melodic development with slurs and accents, reaching fortissimo (*f*) and sforzando (*sf*). Measures 95-98 feature a complex texture with rapid sixteenth-note passages and slurs, with dynamics including fortissimo (*sf*), piano (*p*), and piano crescendo (*pcresc.*). Measure 99 shows a return to a more melodic texture. Measures 100-103 conclude with a rapid sixteenth-note passage, marked piano (*p*) and crescendo (*cresc.*).

Piano Sonata No. 4 in E-Flat Major, "Grand"

3



143 *p* 6

154 *f* *sf* *sf* *sf*

161 *sf* *sf* *ff* *p*

167 *dim.* *pp*

174 *ff* *sfz* *p*

182 *p* *pp* *ff*

190 *sfz* *p*

197 *sf* *p* *cresc.*

Detailed description: This page of a musical score contains eight staves of music, numbered 143 to 197. The key signature has two flats (B-flat and E-flat), and the time signature is 4/4. The music features various dynamic markings and articulations. Staves 143-144 show a melodic line with a slur and a *p* marking, followed by a measure with a fermata and a '6' above it. Staves 154-155 show a series of chords and single notes with *f*, *sf*, *sf*, and *sf* markings. Staves 161-162 show a melodic line with *sf*, *sf*, *ff*, and *p* markings. Staves 167-168 show a melodic line with *dim.* and *pp* markings. Staves 174-175 show a melodic line with *ff*, *sfz*, and *p* markings. Staves 182-183 show a melodic line with *p*, *pp*, and *ff* markings. Staves 190-191 show a melodic line with *sfz* and *p* markings. Staves 197-198 show a melodic line with a slur, *sf*, *p*, and *cresc.* markings.

203 *f*

209 *sf* *sf* *sf* *sf* *sf* *ff*

214 *p*

220

226 9 *p*

241 *sf* *p*

248

254 *cresc.* *ff*

260 *pp*

267 *pp*

273 *f sf sf sf p cresc.*

278 *ff* 7 *ff*

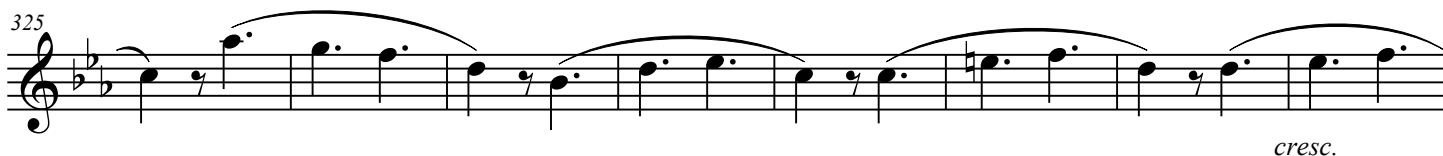
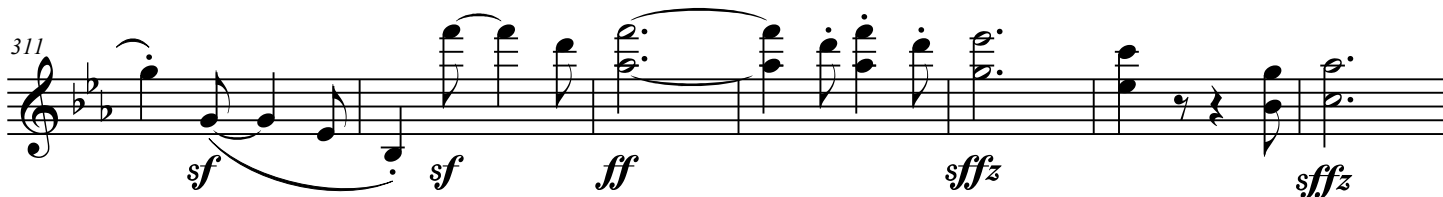
282 *sf sf sf* 2

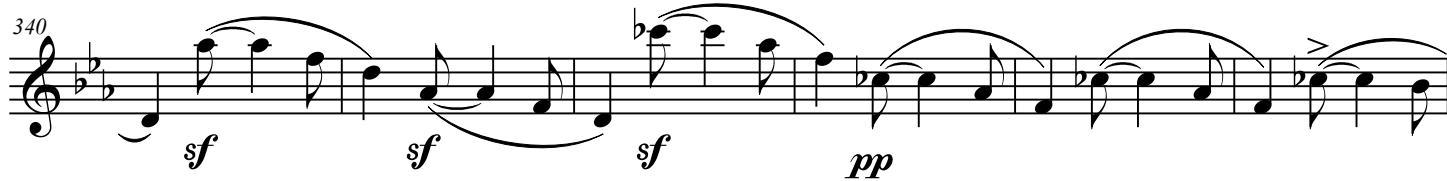
287 *f cresc. ff*

291

294

Detailed description: This page of a musical score contains measures 260 through 294 of a piano sonata. The music is written in E-flat major (three flats) and 4/4 time. The notation includes various dynamics such as *pp* (pianissimo), *f* (forte), *sf* (sforzando), *p cresc.* (piano crescendo), and *ff* (fortissimo). There are several slurs and phrasing marks. Measure 278 features a fingering of 7. Measure 282 has a section marked with a '2' over a whole rest. The piece concludes with a series of sixteenth-note patterns in measures 291 and 294.





Piano Sonata No. 4 in E-Flat Major, "Grand"

Violin I

2. Largo, con gran espressione

Ludwig van Beethoven

Joshua Choe

Largo, con gran espressione

8

12

16

21

26

32

38

p *sf* *p* *cresc.* *sf* *p* *p cresc.* *sf* *p* *cresc.* *f* *p* *pp* *mf* *sf* *pp* *ff* *pp* *pp* *sf* *sf* *p* *f* *pp* *f* *sf* *f* *f* *pp*

44

44 45 46 47 48 49

f sf sf sf f > p

2

Detailed description: This staff contains measures 44 through 49. It begins with a half rest in measure 44, followed by eighth notes in 45, and sixteenth-note runs in 46-48. Measure 49 is a whole rest. Dynamics include *f*, *sf*, and *f > p*. A fermata is placed over the final note of measure 49.

50

50 51 52 53 54 55 56

pp sf pp

Detailed description: This staff contains measures 50 through 56. It features a series of eighth-note patterns with rests, followed by a triplet of eighth notes in measure 55. Dynamics include *pp*, *sf*, and *pp*.

57

57 58 59 60 61

cresc. sf pp 3 cresc.

Detailed description: This staff contains measures 57 through 61. It includes a triplet of eighth notes in measure 59. Dynamics include *cresc.*, *sf*, *pp*, and *cresc.*.

62

62 63 64

sf pp 3 6 cresc. sf p

Detailed description: This staff contains measures 62 through 64. It features a triplet of eighth notes in measure 62 and a sextuplet of eighth notes in measure 63. Dynamics include *sf*, *pp*, *cresc.*, *sf*, and *p*.

65

65 66 67 68 69

mf sf pp

Detailed description: This staff contains measures 65 through 69. It includes a triplet of eighth notes in measure 65. Dynamics include *mf*, *sf*, and *pp*.

70

70 71 72 73

ff pp cresc. f dim.

Detailed description: This staff contains measures 70 through 73. It features a triplet of eighth notes in measure 70. Dynamics include *ff*, *pp cresc.*, and *f dim.*.

74

74 75 76

p f

Detailed description: This staff contains measures 74 through 76. It features a triplet of eighth notes in measure 74. Dynamics include *p* and *f*.

77

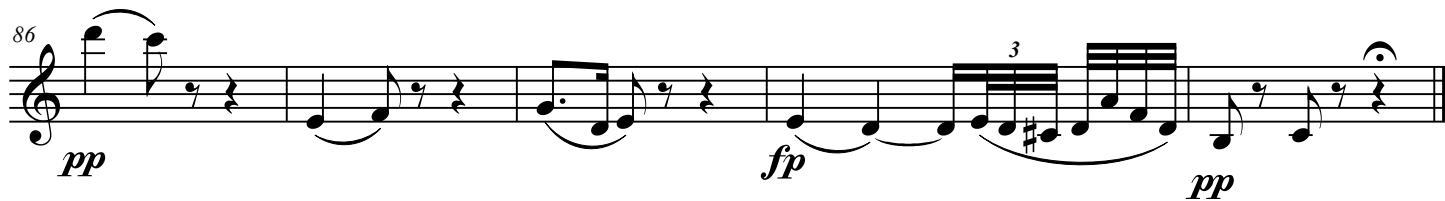
77 78 79 80

ff sf p

Detailed description: This staff contains measures 77 through 80. It features a triplet of eighth notes in measure 77. Dynamics include *ff*, *sf*, and *p*.

Piano Sonata No. 4 in E-Flat Major, "Grand"

3



Piano Sonata No. 4 in E-Flat Major, "Grand"

Violin I

3. Allegro

Ludwig van Beethoven

Joshua Choe

Allegro

p

8

pp

15

p sf sf sf f

21

pp

28

mf

35

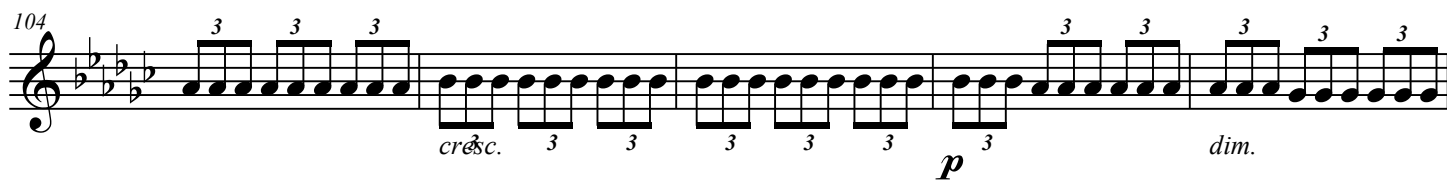
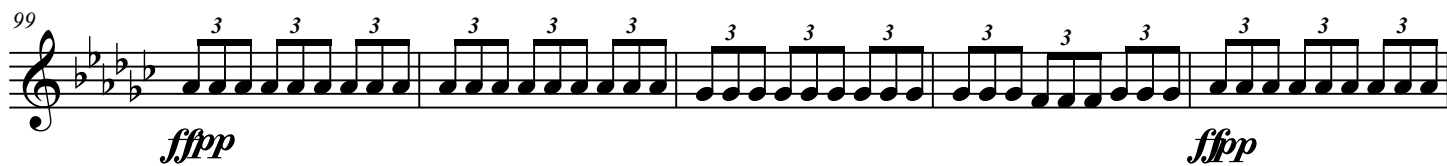
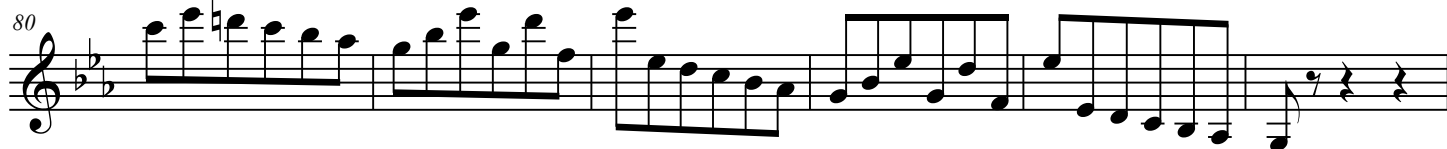
dim.

42

pp

49

pp



109

113

pp *p*

This musical staff contains measures 109 through 113. It begins with a treble clef and a key signature of three flats (B-flat, E-flat, A-flat). Measures 109-112 feature a series of triplet eighth notes. Measure 113 contains a triplet of eighth notes. Dynamic markings *pp* and *p* are placed below the staff.

114

118

ffp

This musical staff contains measures 114 through 118. It continues the triplet eighth note pattern. A dynamic marking of *ffp* is placed below the staff.

119

122

ffp *cresc.*

This musical staff contains measures 119 through 122. It continues the triplet eighth note pattern. Dynamic markings *ffp* and *cresc.* are placed below the staff.

123

127

f *p* *ffp*

This musical staff contains measures 123 through 127. It continues the triplet eighth note pattern. Dynamic markings *f*, *p*, and *ffp* are placed below the staff.

128

132

ffp

This musical staff contains measures 128 through 132. It continues the triplet eighth note pattern. A dynamic marking of *ffp* is placed below the staff.

133

136

sf *sf* *cresc.*

This musical staff contains measures 133 through 136. It continues the triplet eighth note pattern. Dynamic markings *sf*, *sf*, and *cresc.* are placed below the staff.

137

142

ff *pp*

This musical staff contains measures 137 through 142. It continues the triplet eighth note pattern. Dynamic markings *ff* and *pp* are placed below the staff.

143

147

ppp *D.C. al Fine*

This musical staff contains measures 143 through 147. It features a melodic line with a slur. A dynamic marking of *ppp* is placed below the staff. The text *D.C. al Fine* is written at the end of the staff.

Piano Sonata No. 4 in E-Flat Major, "Grand"

Violin I

4. Poco allegretto e grazioso

Ludwig van Beethoven

Joshua Choe

Poco allegretto e grazioso

p

6

cresc. *sf* *p*

11

mf

17

26

f

31

fp *pp*

35

p *mf*

41

f *p*

44 *f* *p*

46 *ff*

48 *p* 3 3 *dim.3* 3 3 *cresc.* 3 3 *sf* *p*

52 3

57 *sf* *p*

61 *p* *sf* *ff* *sf* *sf* *sf* *sf*

68

70 1. *sf*

Detailed description: This page contains the musical notation for measures 44 through 70 of the second movement of Beethoven's Piano Sonata No. 4 in E-flat Major. The music is written in a single staff in E-flat major (three flats). Measures 44-45 feature a series of eighth-note chords, starting with a forte (*f*) dynamic and moving to piano (*p*). Measure 46 continues with a fortissimo (*ff*) dynamic. Measures 48-51 are characterized by triplet patterns, with dynamics ranging from piano (*p*) to fortissimo (*ff*), including a crescendo and a decrescendo. Measures 52-56 show a mix of eighth-note and quarter-note patterns, with a fortissimo (*sf*) dynamic. Measures 61-67 feature a series of chords and single notes, with dynamics including piano (*p*), fortissimo (*ff*), and fortissimo accents (*sf*). Measure 68 continues with eighth-note chords. Measures 70-71 show a first ending bracket leading to a final fortissimo (*sf*) chord.

73 2.

78

80

82

86

88 1.

91 2.

93 *fp* *dim.*

sf sf sf sf

95 *rit.* *pp* *p a tempo*

99

103 *f*

107 *cresc.* *sf p*

113 *mf*

121 *f*

127 *fp* *pp*

131 *p* *mf*

137 *f* *p* *f*

141 *p* *f*

144 *p* *pp* 3 3 3

147 3 *cresc.*

151 *fp* 3

155 *sf p* *cresc.* *f* *pp* *pp*

161 *fp*

166 *cresc.* *f dim.* *p* *cresc.*

172

179

mf p cresc. ff sf dim. p

< > < > dim. pp

Detailed description: This image shows two staves of musical notation. The first staff, labeled 172, contains measures 172 through 178. It begins with a mezzo-forte (mf) dynamic, followed by a piano (p) dynamic and a crescendo (cresc.) marking. The music features a series of eighth-note patterns with slurs and accents. The dynamic reaches fortissimo (ff) and sforzando (sf) in measure 177, then diminishes (dim.) to piano (p) in measure 178. The second staff, labeled 179, contains measures 179 through 184. It continues the eighth-note patterns with slurs and accents. There are two instances of the 'less than' and 'greater than' (< >) markings under the notes. The dynamic decreases (dim.) to pianissimo (pp) by measure 184, where the piece concludes with a double bar line.