

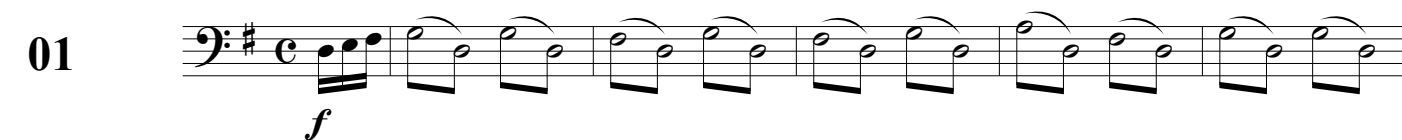
## Te Deum Brasil (alternado)

Op. 65

Arranjo de Justino da Conceição

Allegro

01



7



13



19



Allegro

02

24



30



38



03 **Allegro**

46

*f* *p*

52

*cresc.*

60

*f*

66

04 **Allegro**

70

*f* *p*

77

*cresc.* *f* *mf* *cresc.*

83

*f*

## Andante religioso

05 <sup>88</sup>

*mf* *p*

This block contains measures 88 to 94. It begins with a bass clef, a key signature of one sharp (F#), and a common time signature (C). The music features a series of eighth and quarter notes, with some rests. Dynamic markings *mf* and *p* are present.

<sup>95</sup>

*espress.*

This block contains measures 95 to 100. The notation continues with eighth and quarter notes. A dynamic marking *espress.* is present.

<sup>101</sup>

This block contains measures 101 to 106. The notation continues with eighth and quarter notes, including some beamed sixteenth notes.

<sup>107</sup>

*f* *rit.* *f*

This block contains measures 107 to 114. It includes a dynamic marking *f*, a *rit.* (ritardando) marking, and another *f* marking.

## Allegro

06 <sup>115</sup>

*f* *mf*

This block contains measures 115 to 120. It begins with a bass clef, a key signature of one sharp (F#), and a common time signature (C). The music features a series of eighth and quarter notes. Dynamic markings *f* and *mf* are present.

<sup>121</sup>

*f* *mf* *f* *mf* *animato*

This block contains measures 121 to 126. It includes dynamic markings *f*, *mf*, *f*, *mf*, and the tempo marking *animato*.

<sup>127</sup>

*cresc.* *f*

This block contains measures 127 to 132. It includes a *cresc.* (crescendo) marking and a final *f* marking.

<sup>133</sup>

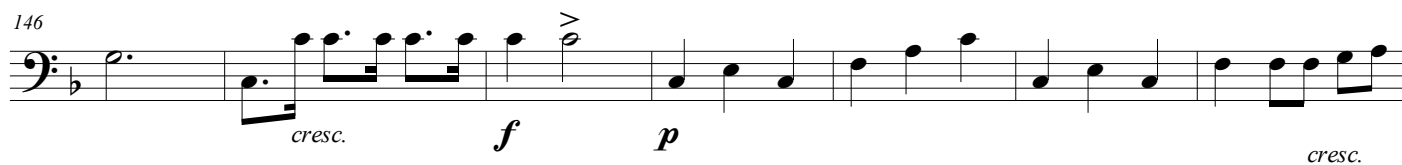
This block contains measures 133 to 138. The notation continues with eighth and quarter notes.

## 07

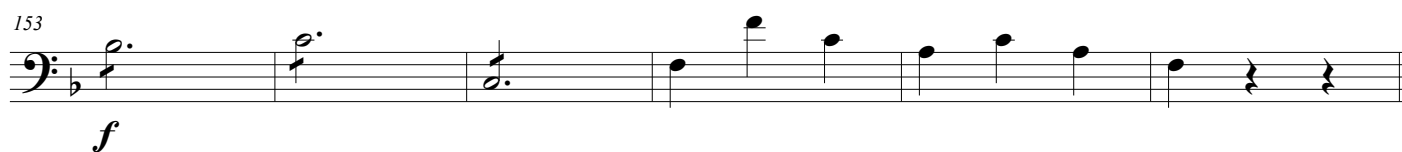
140



146

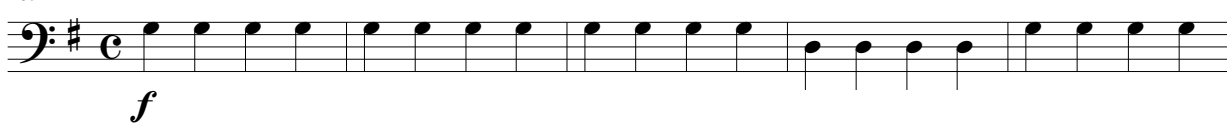


153



## 08

159



164



171



177



184



## Andante levado

09



194



200



207

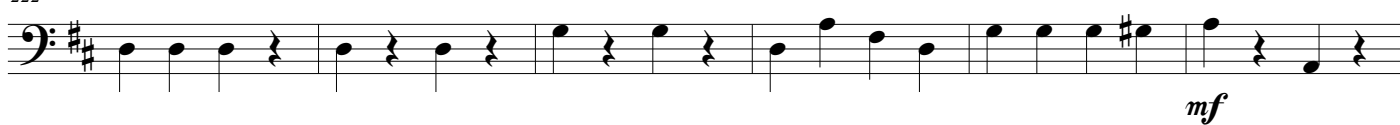


10

## Allegro



222



## Sostenuto

228



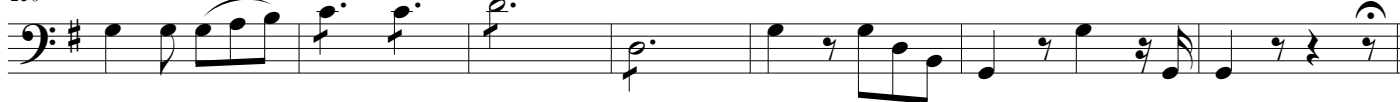
234



242



250



## Allegro

11

257



263



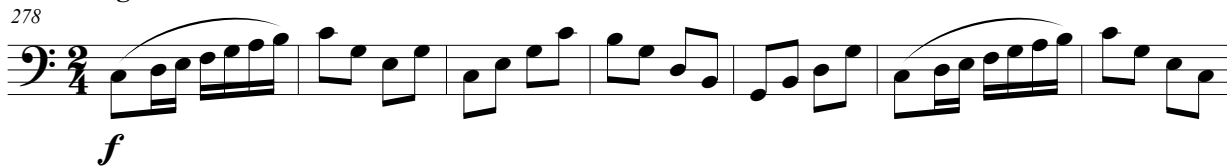
269



## Allegro

12

278



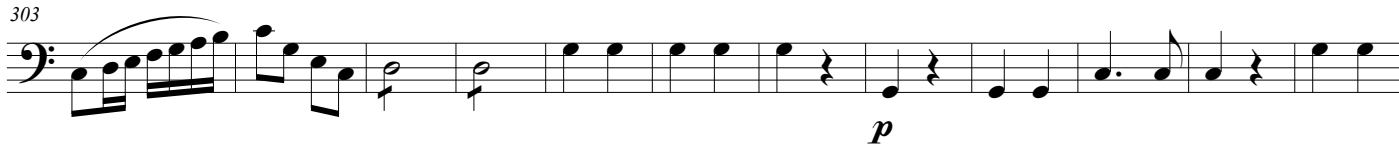
285



294



303



315



13 **Andante**

328 *p* 9

342 *a tempo* *p*

349 *cresc.* *mf* *p* *mf*

357 *f*

14 **Andante**

363 *p* *cresc.*

369 **Brilhante**

*dim.* *f*

376 *p* *cresc.* *f* *p*

383 *cresc.* *f*

