

Solo Piano Suite 1

No. 3

Kevin Pearson

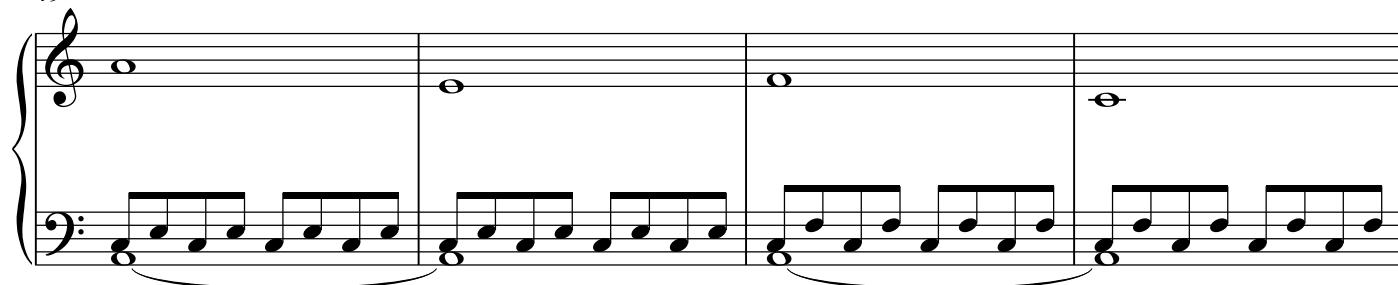
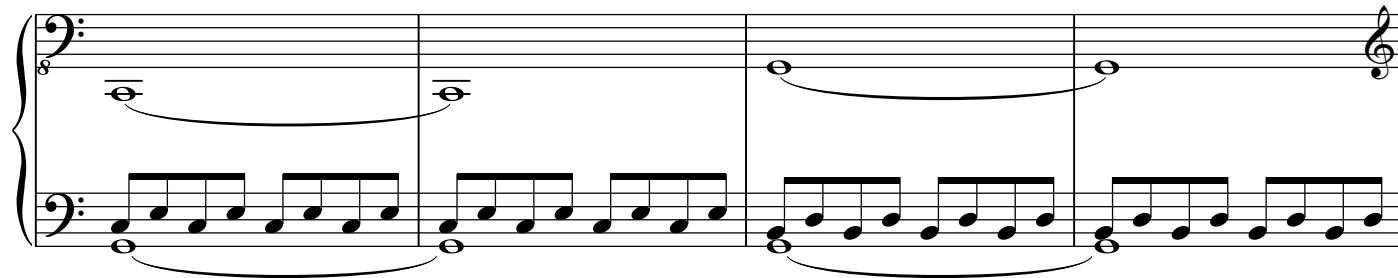
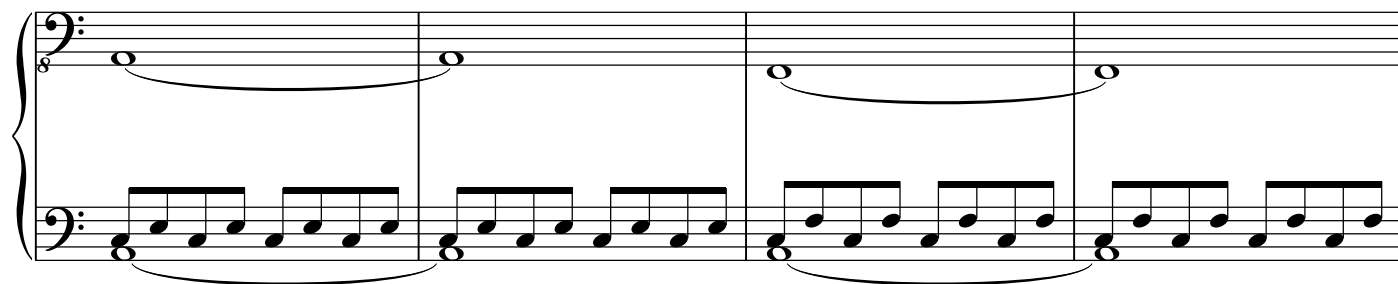
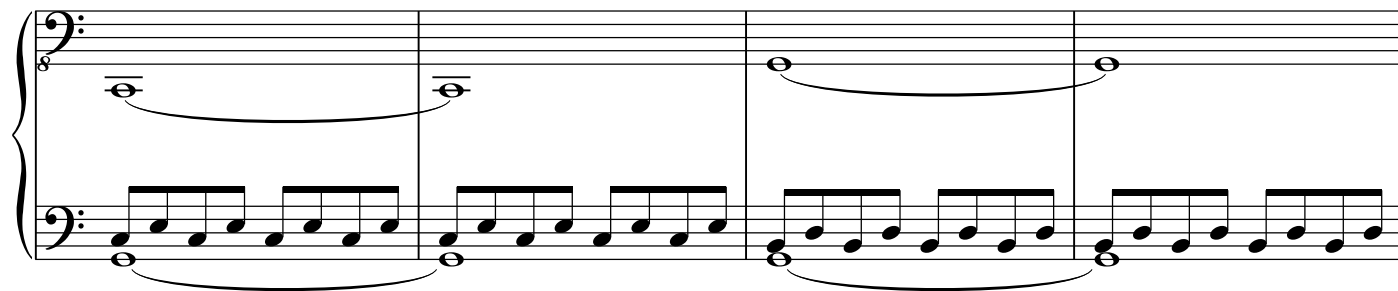
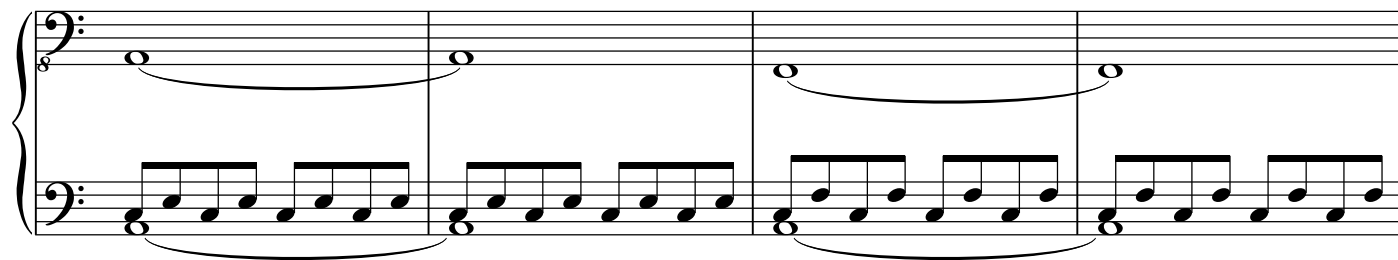
10

17

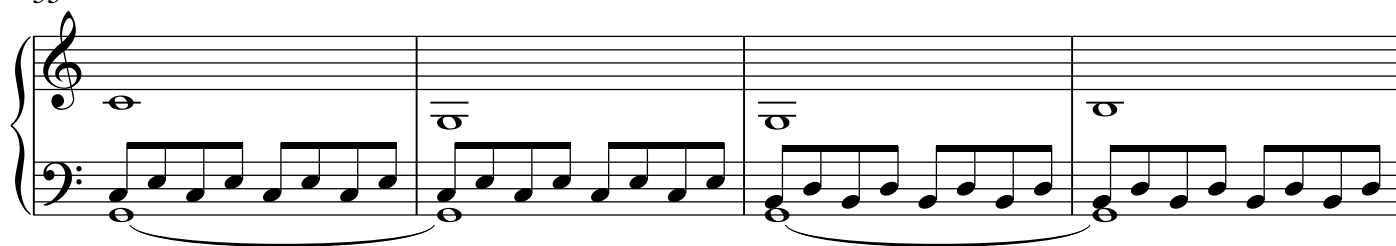
21

25

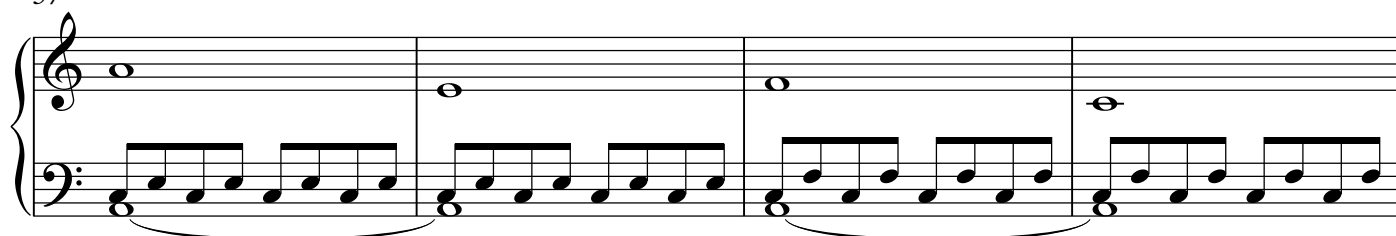
29



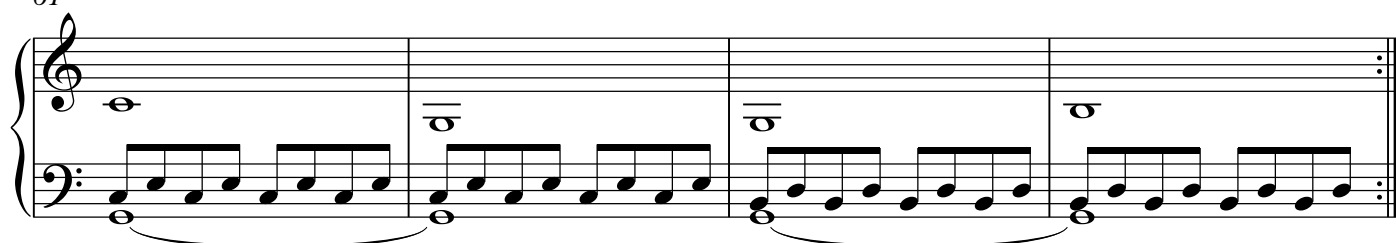
53



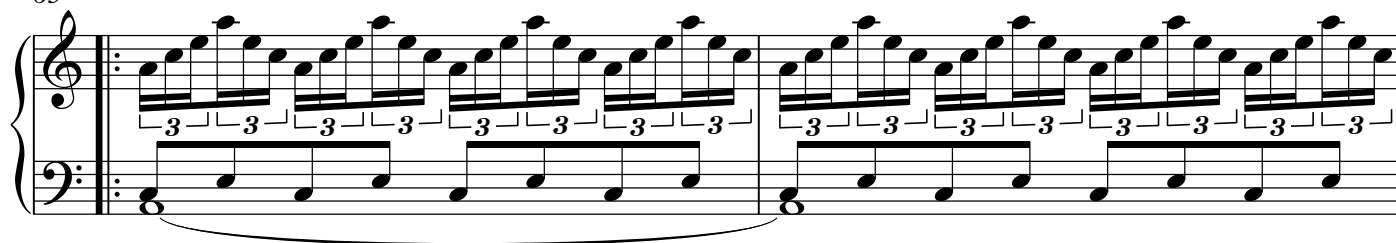
57



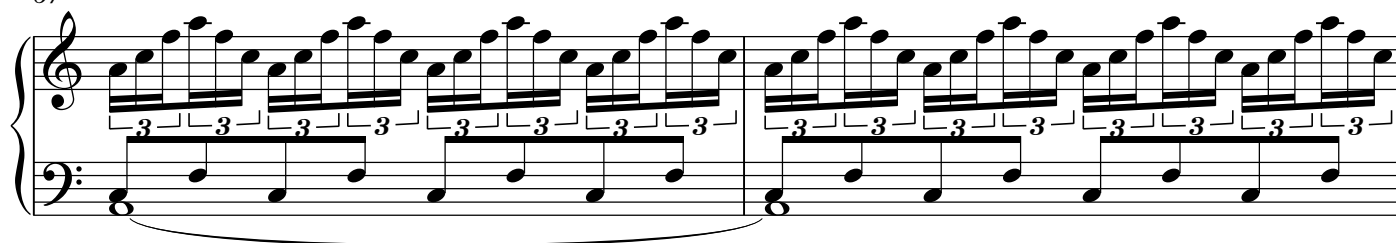
61



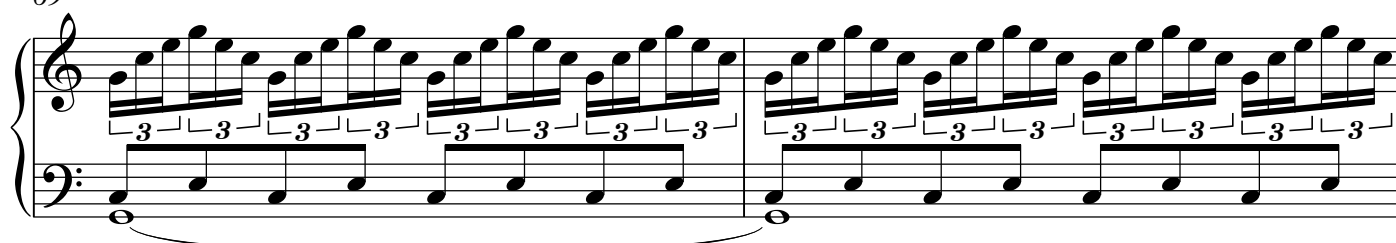
65



67



69



71

Measures 71 and 72 of a piano piece. The right hand features a continuous eighth-note triplet pattern, while the left hand plays a steady eighth-note accompaniment. A brace under the first measure of the left hand indicates a half-measure rest.

73

Measures 73 and 74. The right hand continues the eighth-note triplet pattern, and the left hand maintains the eighth-note accompaniment. A brace under the first measure of the left hand indicates a half-measure rest.

75

Measures 75 and 76. The right hand continues the eighth-note triplet pattern, and the left hand maintains the eighth-note accompaniment. A brace under the first measure of the left hand indicates a half-measure rest.

77

Measures 77 and 78. The right hand continues the eighth-note triplet pattern, and the left hand maintains the eighth-note accompaniment. A brace under the first measure of the left hand indicates a half-measure rest.

79

Measures 79 and 80. The right hand continues the eighth-note triplet pattern, and the left hand maintains the eighth-note accompaniment. A brace under the first measure of the left hand indicates a half-measure rest.

81

Measures 81 through 84. The right hand is in whole rests. The left hand continues the eighth-note accompaniment. Braces under the first and third measures of the left hand indicate half-measure rests.

85

85 86 87 88 89

90

90 91 92 93 94 95 96

97

97 98 99 100

101

101 102 103 104

105

105 106 107 108

109

109 110 111 112

113

Measures 113-116. The right hand (treble clef) contains whole rests. The left hand (bass clef) plays a continuous eighth-note pattern. Measures 113 and 115 feature a slur under the first four eighth notes.

117

Measures 117-120. The right hand (treble clef) contains whole rests. The left hand (bass clef) plays a continuous eighth-note pattern. Measures 117 and 119 feature a slur under the first four eighth notes.

121

Measures 121-123. The right hand (treble clef) plays a sustained octave chord (C4 and C5) with a slur across measures 121 and 122. The left hand (bass clef) plays a continuous eighth-note pattern. Measure 123 has a whole rest in the right hand.

124

Measures 124-126. The right hand (treble clef) plays a sustained octave chord (C4 and C5) with a slur across measures 124 and 125. The left hand (bass clef) plays a continuous eighth-note pattern. Measure 126 features a whole rest in the right hand, a slur under the first four eighth notes in the left hand, and the marking "rit." followed by a dotted line.