

Cantata for Soprano, Oboe and Continuo

---

# Mi palpita il cor

George Frideric Handel

**GUILDHALL**  
SCHOOL

---

*Performance Edition*

Theorbo Part – French Tablature  
(PThFr)

**Editors**

Thomas Allery, Hannah Blumsohn, Ella Bodeker,  
Jens Franke, Lucy Neil, Jorge Silva

**Historical Performance Department**

Guildhall School of Music & Drama  
July 2020 | London

## **Editions and Parts**

In order to make our edition as accessible as possible, we have provided a range of scores and parts, each of which may be used interchangeably with the others. Our work includes:

1) an Urtext edition:

- Full score, featuring oboe, soprano, and figured basso continuo part, with historical introduction, notes on the sources and editorial decisions (UFS)
- Oboe part (UOb)
- Figured cello part with vocal lines included during recitatives (UVcl)

2) a performance edition:

- Full score, featuring an oboe line with editorial suggestions, soprano, and figured bass with keyboard realisation, for harpsichord, piano, or organ, with historical introduction, notes on the sources and editorial decisions (PFS)
- English vocal study part, with oboe, figured bass, and word-for-word translation under the Italian text, and additional prose translation (PSopEng)
- French vocal study part, with oboe, figured bass, word-for-word translation under the Italian text, and introductory notes and translation in French (PSopFr)
- Oboe part with editorial suggestions (POb)
- Cello part, with original and editorial figures, and vocal lines in recitatives (PVcl)
- Theorbo part featuring realisation of the recitative accompaniment in French tablature (PThFr)
- Theorbo part featuring realisation of the recitative accompaniment in Italian tablature (PThIt)

## **Editorial Team**

This edition of Handel's *Mi palpita il cor* has been prepared by members of the Guildhall School of Music & Drama's Historical Performance Department (2019/20). Under the tutelage and guidance of Nicholas Parle and Dionysios Kyropoulos, the following students and Junior Fellows have worked closely together to create this edition: Thomas Allery (harpsichord); Hannah Blumsohn (oboe); Ella Bodeker (soprano); Jens Franke (theorbo); Lucy Neil (cello); and Jorge Silva (harpsichord).

*NB: More information about this part, together with editorial details, can be found in the prefatory material of the two full scores, UFS and PFS, as outlined above.*

## Mi palpita il cor

George Frideric Handel

Adagio [recit.]

Soprano

Mi pal - - - pi-ta il cor nè in-ten -

Theorbo

Basso continuo

5

- - - do per - chè nè in-ten - do per - chè

Allegro [aria]

Basso continuo

5

10

15

Recit.

Soprano

Tor-men-to e ge-lo - si - a sde-gno af - fan-no e do-lo-re da

Theorbo

Basso continuo

[Aria]

Basso continuo



6

9



17



26



36



44



51



58



66



Da Capo

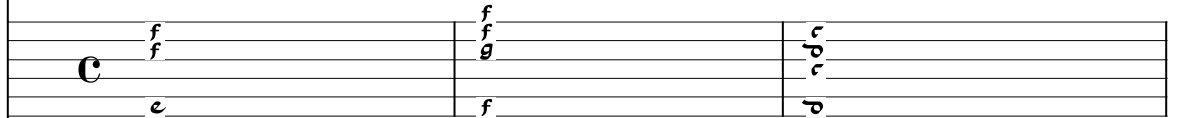
[Recit.]

Soprano

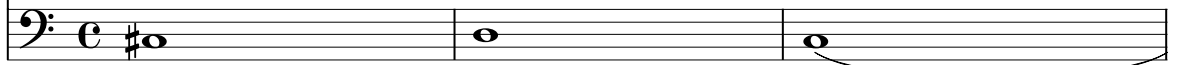


Clo-ri di te mi la-gno e di té o nu-me, fi-gliodi Ci - te -

Theorbo



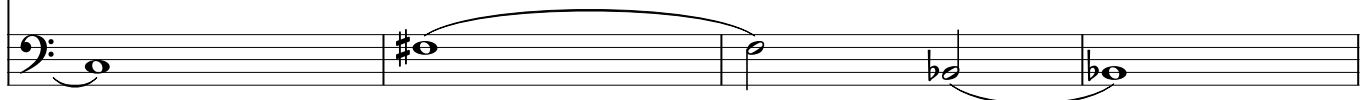
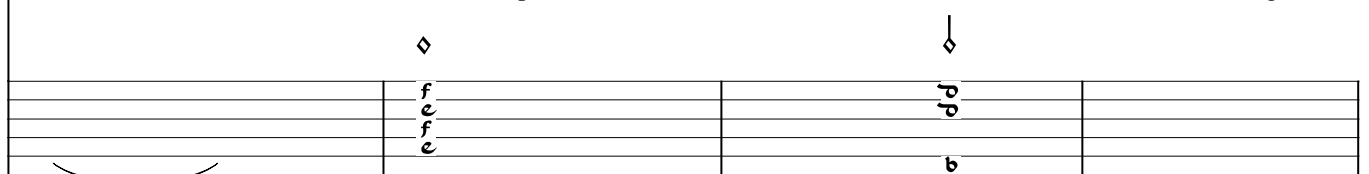
Basso continuo



4



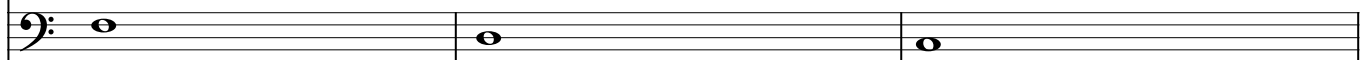
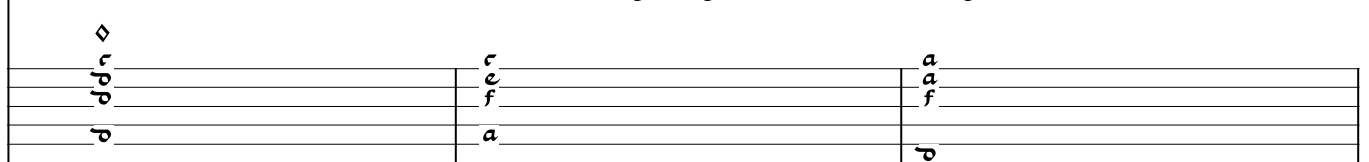
re-a, ch'ilcor fe - ri-sti per u-na chenon sa checosaè a-mo-re ma se d'e-gualsa -



8



et - ta a lei fe - ri-sti il co - re più la-gnar - mi non vo - glio e ri - ve - ren-te in -



4+  
2

11

nan-ti al si-mu-la-cro tu-o pro-stra-to a ra u-mil de-vo-to a-do-re-rò quel

15

Di-o che fè con-ten-to e pa-go il mio de-si-o.

4+  
2

7

#

## Allegro [Aria]

## Basso continuo

[illegible]

Da Capo



