

CONCERTO DA PONTE

4 Violoncelli

Allegro vivace ♩ = 152

Beischer-Matyó Tamás

13 *pp* *pizz.*

19 *col legno* *mf*

26 *in modo ord.* *pp* *p* *mf*

35 *f* *3* *3* *3* *3* *3* *3* *3*

39 *non div.* *ff* *p*

44 *pp* *poco sost. a tempo* *f* *p*

51 *pizz.* *p* *arco* *poco sost. a tempo* *f* *p* *pizz.* *p* *arco* *poco sost.* *f*

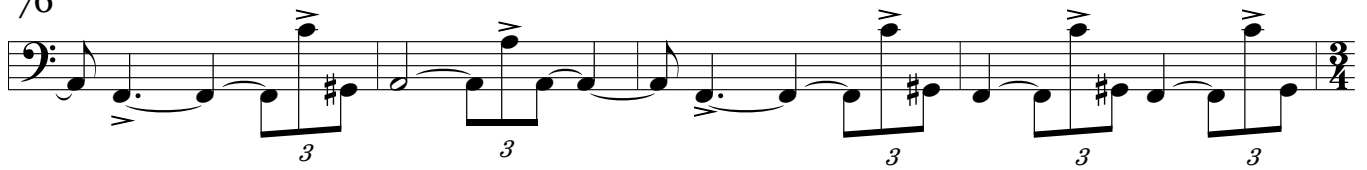
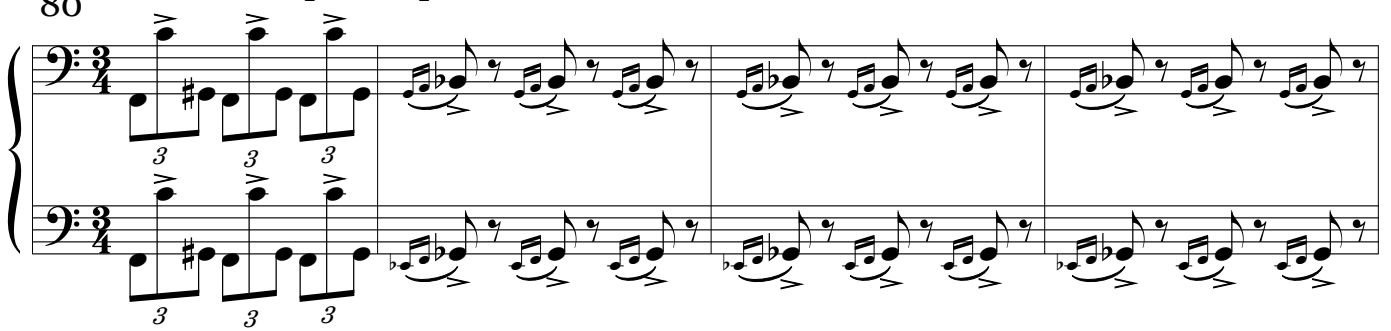
55 *a tempo* *p* *pp* *sul pont.* *pp* *in modo ord.*

62 *sul pont.* *3*

68 in modo ord.



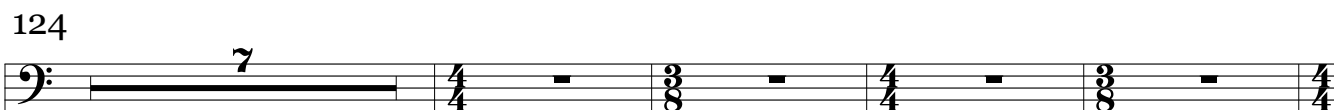
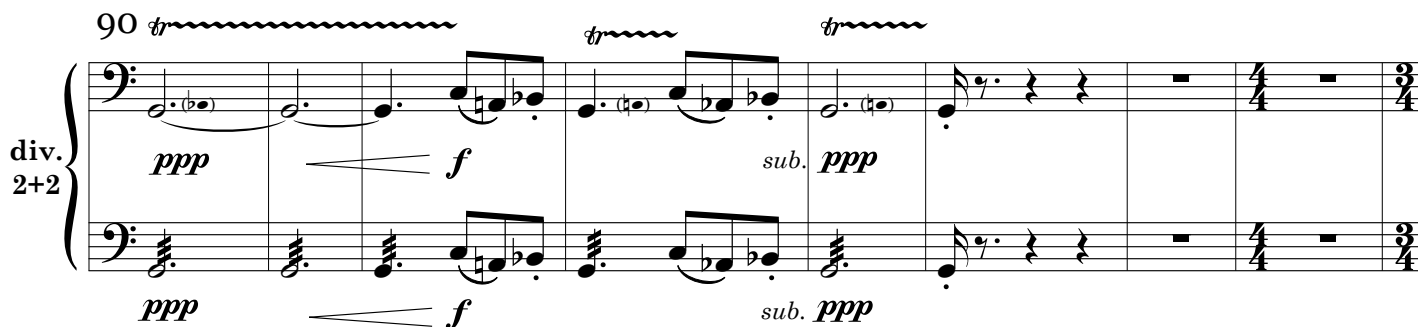
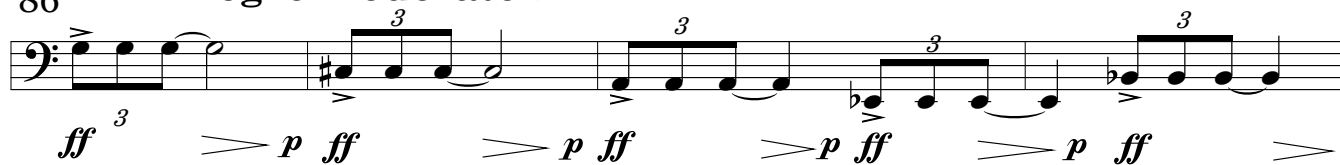
76

80 *accelerando poco a poco*

(accelerando poco a poco)

84



86 *subito* **Allegro moderato** ♩ = 120

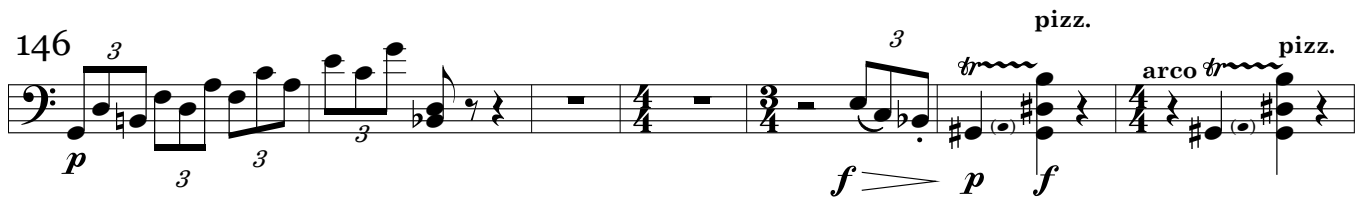
135



140



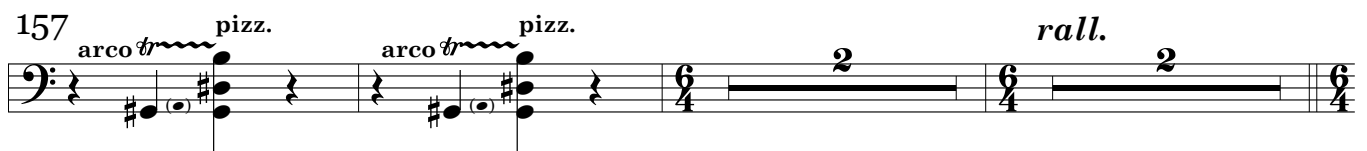
146



153



157



163



168 *a tempo, poco quieto*

172



177

poco rall.

div.
1+
1+
1+
1

p dolce

182 *a tempo, poco quieto**rall.*

uniti

pizz.
pp

Molto vivace ♩ = 168

197

arco
con sord. sul pont.*pp* sempre

201



204



207



210



213



216



219



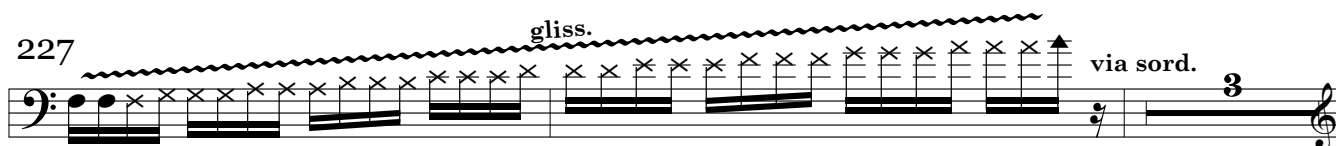
222



225



227



232 (senza sord.)
pizz.

div.
2+2

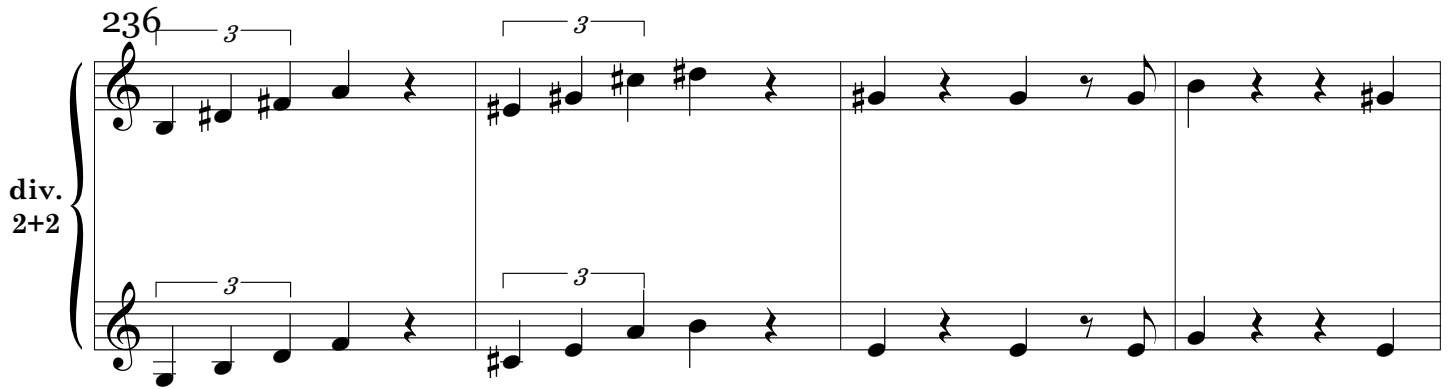
(senza sord.)
pizz.

f



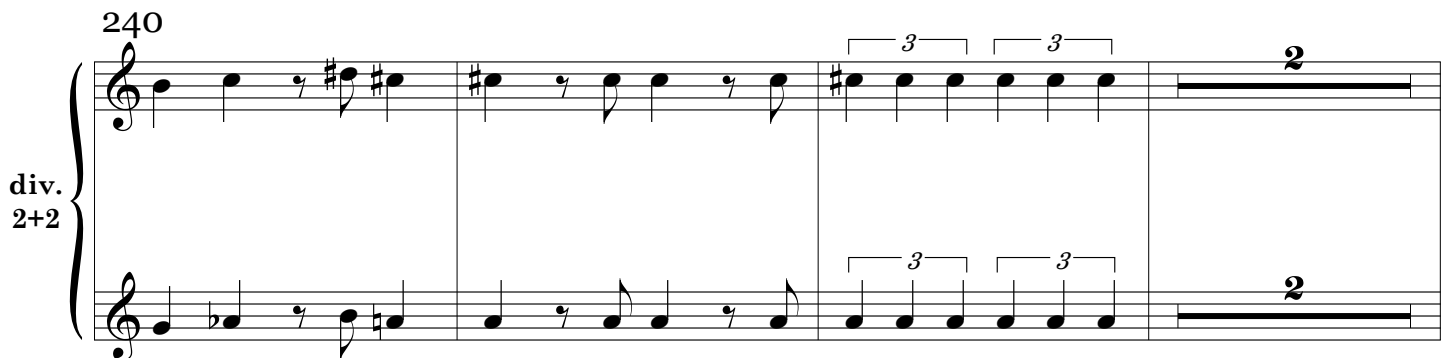
236

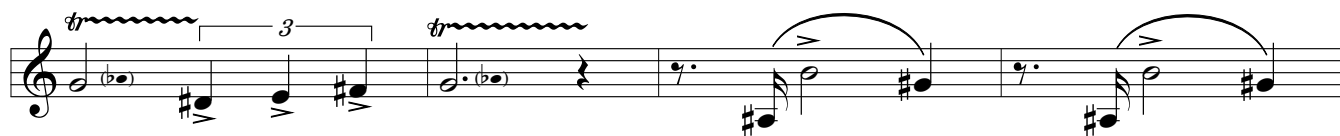
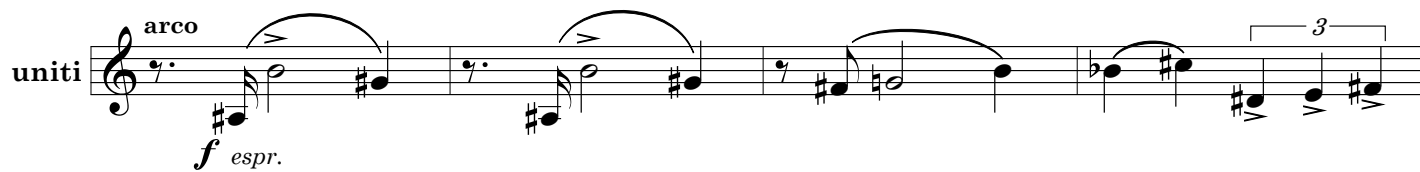
div.
2+2



240

div.
2+2





277 **Allegro vivace** ♩ = 152

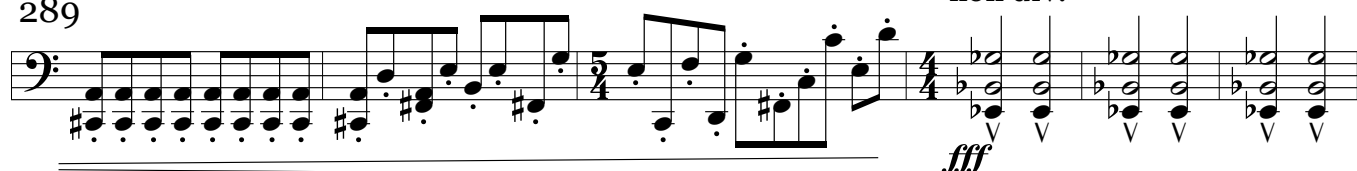
284

non div.

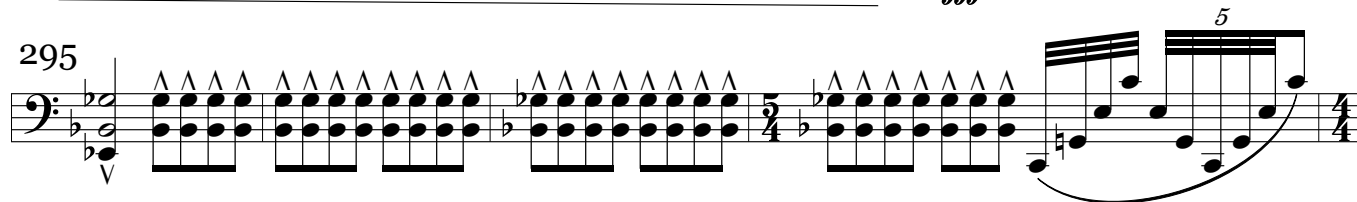


289

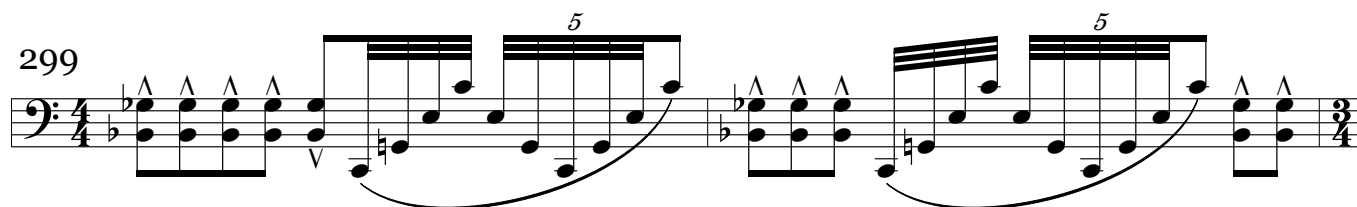
non div.



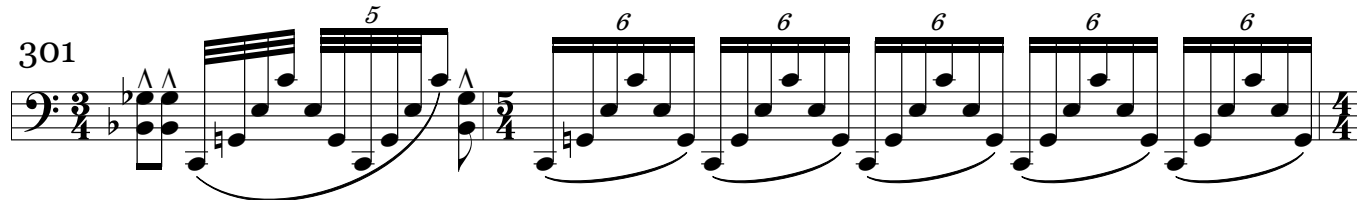
295



299



301



303

*appassionato*sub. *ppp*

308



314



318



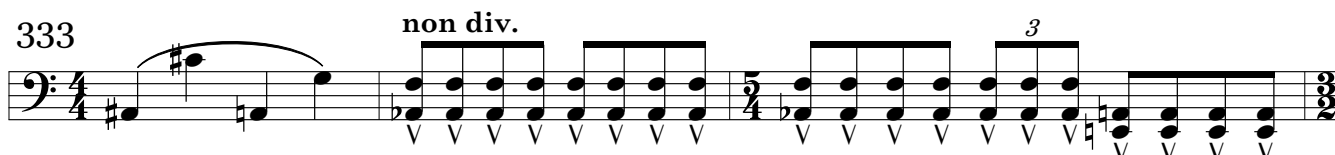
323



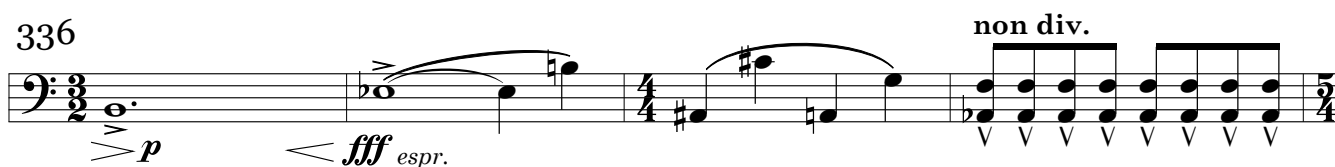
328



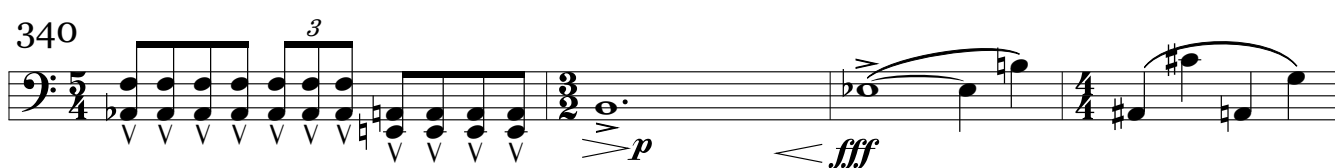
333



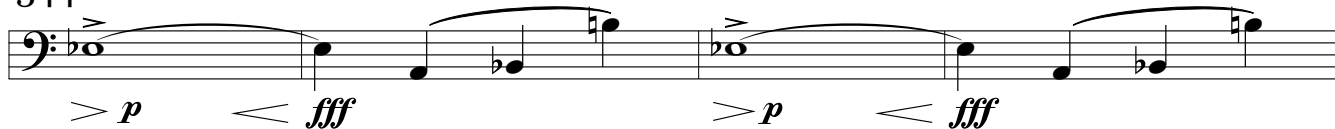
336



340



344



348



351



355



363 **Molto vivace** ♩ = 168

div. 2+2

pppp

pppp

This system contains measures 363 through 366. It features two staves, each with a bass clef and a 4/4 time signature. The music is written in a key with one flat (B-flat). The dynamics are marked *pppp* (pianissimo) with a hairpin symbol. The notation consists of continuous eighth-note patterns across all four staves.

367

div. 2+2

This system contains measures 367 through 370. It continues the musical pattern from the previous system, with two staves in bass clef, 4/4 time, and one flat key signature. The notation consists of continuous eighth-note patterns.

371

div. 2+2

This system contains measures 371 through 374. It continues the musical pattern, with two staves in bass clef, 4/4 time, and one flat key signature. The notation consists of continuous eighth-note patterns.

375

div. 2+2

This system contains measures 375 through 378. It continues the musical pattern, with two staves in bass clef, 4/4 time, and one flat key signature. The notation consists of continuous eighth-note patterns.

379

div. 2+2

383

div. 2+2

390

uniti pizz *p*

396

401

arco *rall. molto* ----- *al cca.: ♩ = 52 - 60*

pppp

409

CADENZA

Molto lento e misterioso ♩ = 52

410

con sord.

div.

1+

1+

1+

1

ppp

con sord.

ppp

con sord.

ppp

con sord.

415

div.

1+

1+

1+

1

419

div.
1+
1+
1+
1

425

Molto vivace ♩ = 168

via sord.

432 *pizz.* *arco*

438

444 *f*

448 *non div.* *fff*

451 *p*

454 *fff*

456 *p* *fff*

459

464 *non div.*

467



469



471



473



475



477



482



492

